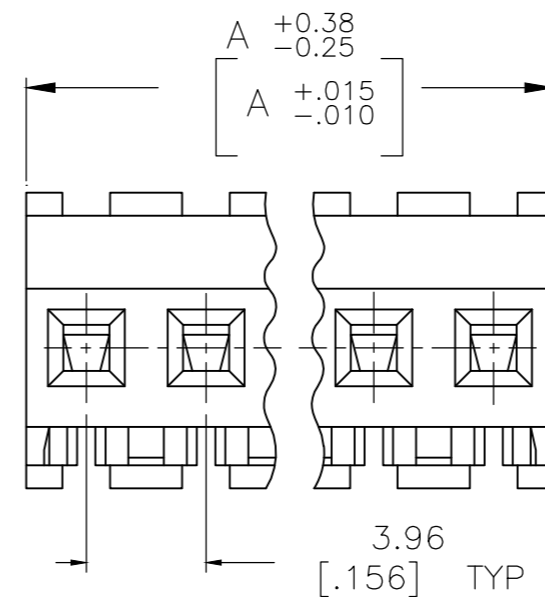
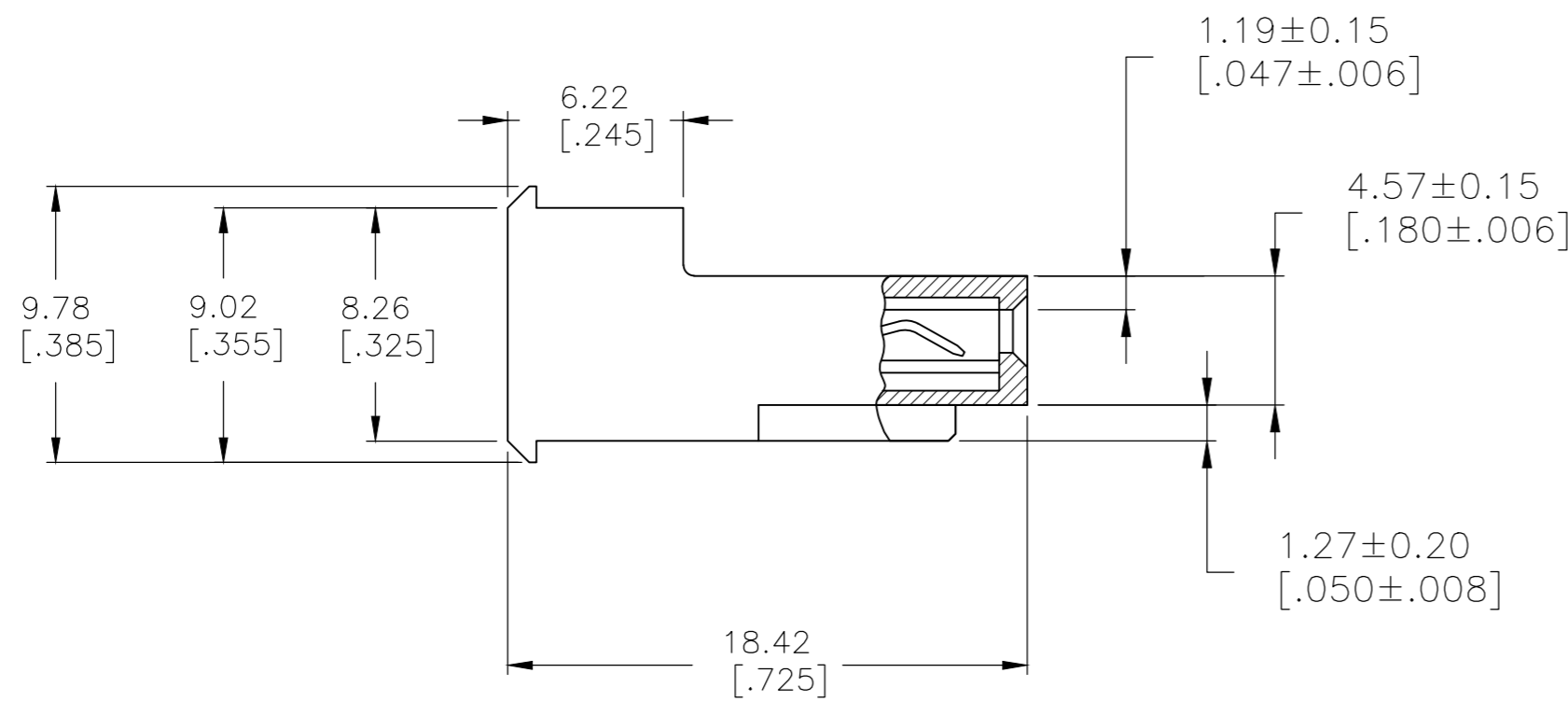
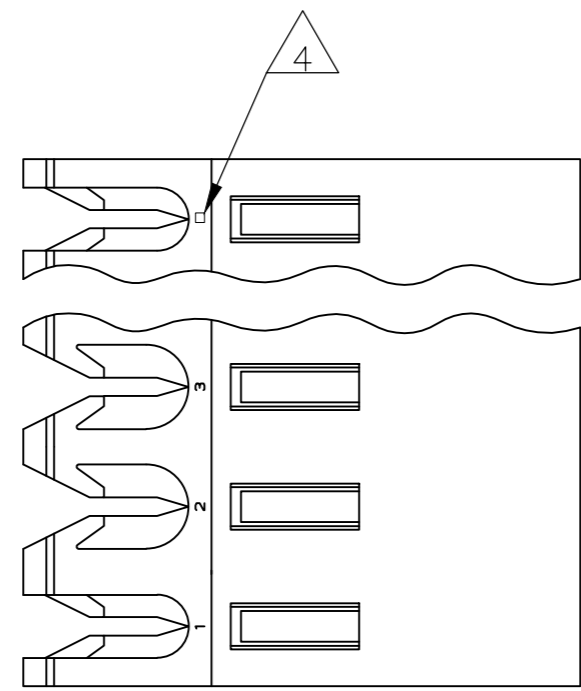


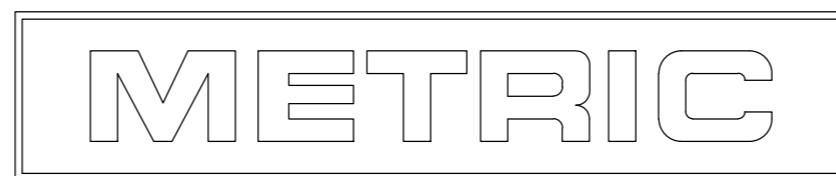
THIS DRAWING IS UNPUBLISHED. RELEASED FOR PUBLICATION
 © COPYRIGHT - By - TE CONNECTIVITY ALL RIGHTS RESERVED.

LOC	DIST	REVISIONS			
P	LTR	DESCRIPTION	DATE	DWN	APVD
CM	54	V1	ECO-14-012257	30OCT2014	KR OC



DIM A	NO OF CIRCUITS	PART NO
95.10 [3.744]	24	5-640606-4
91.14 [3.588]	23	5-640606-3
87.17 [3.432]	22	5-640606-2
83.21 [3.276]	21	5-640606-1
79.25 [3.120]	20	5-640606-0
75.29 [2.964]	19	4-640606-9
71.32 [2.808]	18	4-640606-8
67.36 [2.652]	17	4-640606-7
63.40 [2.496]	16	4-640606-6
59.44 [2.340]	15	4-640606-5
55.47 [2.184]	14	4-640606-4
51.51 [2.028]	13	4-640606-3
47.55 [1.872]	12	4-640606-2
43.59 [1.716]	11	4-640606-1
39.62 [1.560]	10	4-640606-0
35.66 [1.404]	9	3-640606-9
31.70 [1.248]	8	3-640606-8
27.74 [1.092]	7	3-640606-7
23.77 [.936]	6	3-640606-6
19.81 [.780]	5	3-640606-5
15.85 [.624]	4	3-640606-4
11.89 [.468]	3	3-640606-3
7.92 [.312]	2	3-640606-2
95.10 [3.744]	24	2-640606-4
91.14 [3.588]	23	2-640606-3
87.17 [3.432]	22	2-640606-2
83.21 [3.276]	21	2-640606-1
79.25 [3.120]	20	2-640606-0
75.29 [2.964]	19	1-640606-9
71.32 [2.808]	18	1-640606-8
67.36 [2.652]	17	1-640606-7
63.40 [2.496]	16	1-640606-6
59.44 [2.340]	15	1-640606-5
55.47 [2.184]	14	1-640606-4
51.51 [2.028]	13	1-640606-3
47.55 [1.872]	12	1-640606-2
43.59 [1.716]	11	1-640606-1
39.62 [1.560]	10	1-640606-0
35.66 [1.404]	9	640606-9
31.70 [1.248]	8	640606-8
27.74 [1.092]	7	640606-7
23.77 [.936]	6	640606-6
19.81 [.780]	5	640606-5
15.85 [.624]	4	640606-4
11.89 [.468]	3	640606-3
7.92 [.312]	2	640606-2

- 1 MATERIAL: CONNECTOR - NYLON UL94V-2 (RED).
CONTACTS - 0.30[.012] THICK COPPER ALLOY (BRIGHT TIN-LEAD 0.00203[.000080] MIN. THICK FOR CONTACTS 640606-2 THRU 2-640606-4) (MATTE WHISKER MITIGATED TIN 0.00203[.000080] MIN THICKNESS OVER NICKEL UNDERPLATE FOR 3-640606-2 THRU 5-640606-4).
- 2 CONTACTS ACCEPT 22 AWG WIRE WITH 2.41[.095] MAX INSULATION DIAMETER.
- 3 CONTACTS MUST ACCEPT 1.14±0.03[.045±.001] SQUARE POST AND REMAIN LOCKED IN POSITION.
- 4 IDENTIFICATION NUMBER FOR LAST CIRCUIT MAY NOT APPEAR ON ALL ASSEMBLIES.
- 5 DIMENSIONS IN BRACKETS ARE IN INCHES.
- 6 HOUSING FEATURES ARE: FEED-THRU WITHOUT LOCKING RAMP.
- 7 OBSOLETE PARTS: OBSOLETE CIS STREAMLINING PER D.RENAUD/D.SINISI



SUPERSEDED
7

7 SUPERSEDED
7

SUPERSEDED
7

THIS DRAWING IS A CONTROLLED DOCUMENT.		DWN B. LEWIS 12FEB91		
DIMENSIONS: mm [INCHES]		CHK R. SWING 12FEB91		
TOLERANCES UNLESS OTHERWISE SPECIFIED:		APVD D. CLARK 19FEB91	NAME MTA-156 CONNECTOR ASSEMBLY, 22 AWG, STANDARD	
0 PLC ± -		PRODUCT SPEC 108-1051	SIZE A2	CAGE CODE 00779
1 PLC ± -		APPLICATION SPEC 114-1020	DRAWING NO C-640606	RESTRICTED TO -
2 PLC ± -		MATERIAL 1	WEIGHT -	SCALE 4:1
3 PLC ± 0.13 [.005]		FINISH 1	CUSTOMER DRAWING	SHEET 1 OF 1
4 PLC ± -				REV V1
ANGLES ± -				

Mouser Electronics

Authorized Distributor

Click to View Pricing, Inventory, Delivery & Lifecycle Information:

[TE Connectivity:](#)

[1-640606-0](#)