

4

3

2

1

THIS DRAWING IS UNPUBLISHED.

RELEASED FOR PUBLICATION

© COPYRIGHT

ALL RIGHTS RESERVED.

LOC

DIST


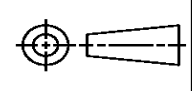
REVISIONS

P	LTR	DESCRIPTION	DATE	DWN	APVD
	A1	ECR-14-003320	11MAR2014	GK	HMR

REPLACED BY OCEAN STYLE APPLICATOR PART
NUMBER 2266150-1

FOR REPLACEMENT PARTS FOR APPLICATOR 1855145
REFER TO ADDITIONAL PAGE(S). SPARE PARTS KIT (IF LISTED)
WILL REMAIN AVAILABLE.

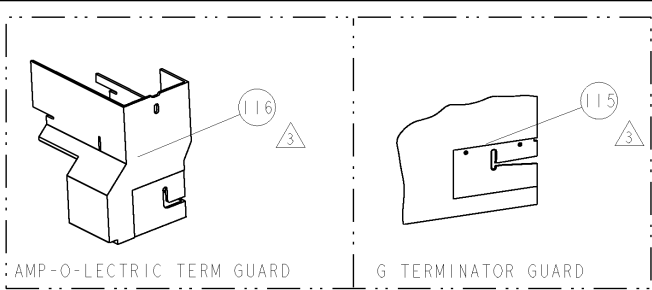
THE REPLACEMENT OCEAN STYLE APPLICATOR HAS THE
SAME TERMINATOR/PRESS INTERFACE AS APPLICATOR
1855145

THIS DRAWING IS A CONTROLLED DOCUMENT.		DWN GOPALAKRISHNA HV		 TE Connectivity			
DIMENSIONS:		CHK RAGHAVENDRA					
		APVD RAGHAVENDRA		NAME FINE ADJUST SIDE FEED HDM APPLICATOR			
		PRODUCT SPEC					
		APPLICATION SPEC					
MATERIAL		WEIGHT		SIZE A3	CAGE CODE	DRAWING NO C- 1855145	RESTRICTED TO
FINISH		CUSTOMER DRAWING		SCALE		SHEET 1 OF 2	REV A1


8				7			
THIS DRAWING IS UNPUBLISHED.				RELEASED FOR PUBLICATION			
20				20			
© COPYRIGHT 20 BY TYCO ELECTRONICS CORPORATION. ALL RIGHTS RESERVED.							
PART NUMBER	REV	FIRST USED	POWER UNIT	FEED TYPE	DESCRIPTION		
1855145-1	A	122500-1	LEADMAKER	POST FEED	CUTS CARRIER		
1855145-2	A	565435-5	BENCH MODEL K	PRE FEED	CUTS CARRIER		
1855145-3	A	354500-1	BENCH MODEL G	PRE FEED	CUTS CARRIER		
1855145-6	A	122500-1	LEADMAKER	POST FEED	CONTINUOUS CARRIER		
7-1855145-7	A	-	-	-	SPARE PARTS		

- 1 RECOMMENDED SPARE PARTS
2 GREASE LIGHTLY
3 GUARD MUST BE IN PLACE WHEN OPERATING APPLICATOR IN A BENCH MACHINE
4 SEE TERMINAL CUSTOMER DRAWING FOR CUT-OFF REQUIREMENT.

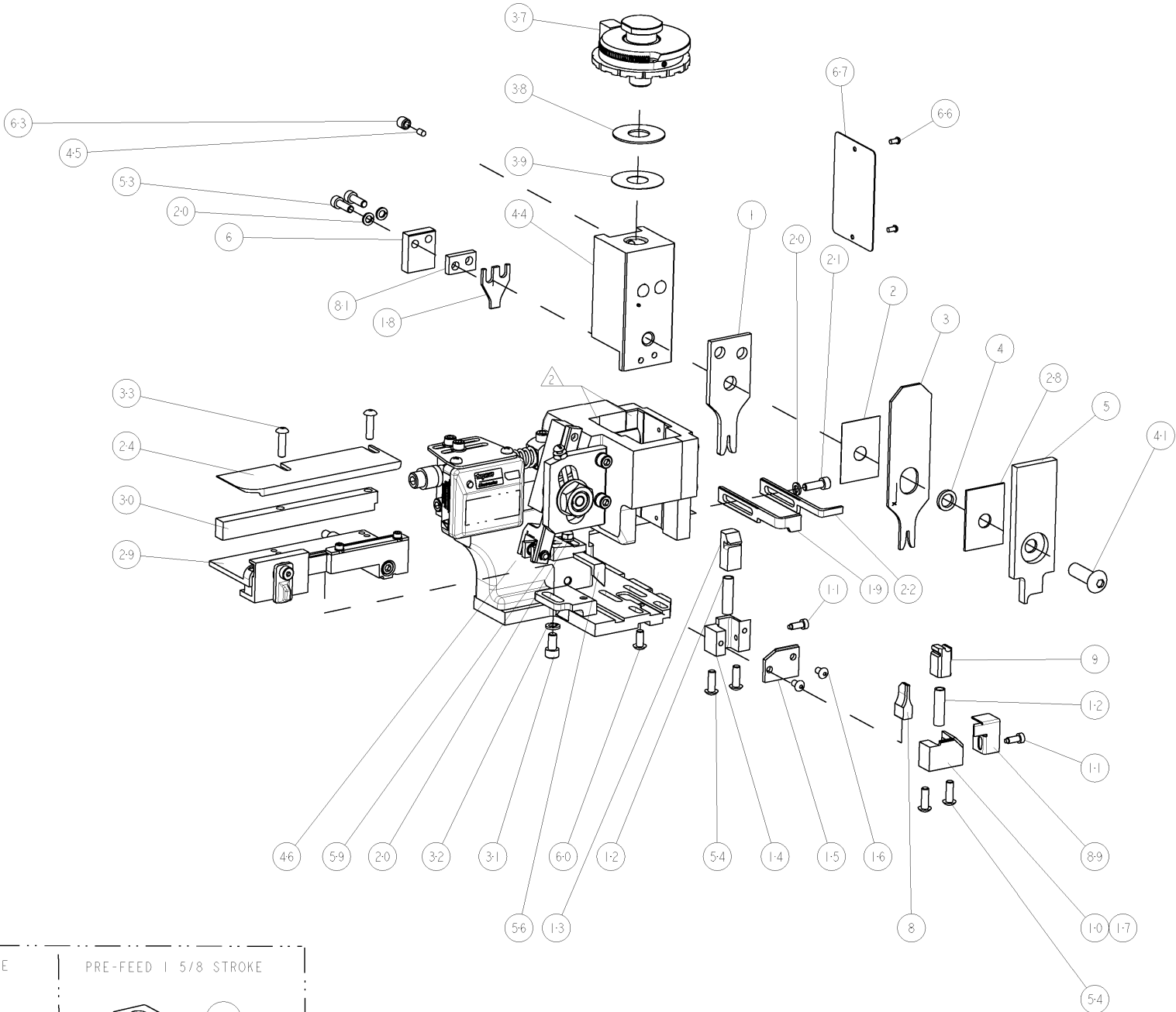
* WARNING
ON INSTALLATION, SET WIRE DISC TO LARGEST WIRE SIZE SETTING. USE OF SETTINGS BELOW MIN. REQUIRED CRIMP HEIGHT SETTING WILL CAUSE DAMAGE TO CRIMP TOOLING.



TERMINAL NAME: AMPMODU MOD.4 RECEPTACLE, S.C.P.

SOCKET	PIN	AMP TERMINAL - AMP CRIMP SPECS				
167418	-					REF SETTING
-	-	CRIMP HEIGHT		WIRE SIZE		
-	-	0.89±0.05mm[.035±.002]		20AWG	B2	
-	-	0.79±0.05mm[.031±.002]		22AWG	C2	
-	-	0.69±0.05mm[.027±.002]		24AWG	C9	
-	-	-		-	-	
-	-	CRIMP	SIZE	TYPE	RANGE	
-	-					
-	-					
-	-	WIRE	1.40mm[.055]	F	24-20 AWG	
-	-	INSUL	1.78mm[.070]	F	Ø1.60mm MAX	
WIRE STRIP LENGTH 3.58 - 4.78mm	TERM APPL SPEC 4114-3118	FEED 7.62mm	APPLICATOR INSTRUCTIONS 408-8040		SET UP GAGE 458637-1	

LOC		DIST		REVISIONS			
A		66		P	LTR	DATE	OWN
				A	RELEASED	17NOV2006	LG TE

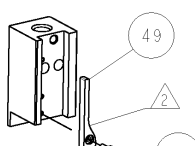
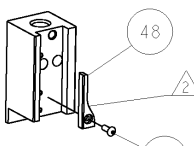
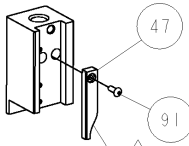


3	-	-	-	REF	-	...	455749-1	GUARD WINDOW	116
	-	-	REF	-	-	...	679532-1	INSERT, GUARD	115
	-	1	1	1	1	-	1-21002-7	SCR, BTN SKT HD CAP 6-32 X .375	91
	-	1	1	1	1	-	318563-1	GUARD, FRONT CHIP	89
	-	1	1	1	1	-	4-240641-1	SPACER	81
	-	1	1	1	1	-	4088040	SF APPL INST 408-8040	72
	-	1	1	1	1	-	217238-1	GENERAL INSTRUCTION PKG	71
	-	1	1	1	1	-	461264-5	PLATE, IDENTIFICATION	67
	-	2	2	2	2	-	21017-2	SCREW, DRIVE	66
	-	1	1	1	1	-	21009-2	SCR, SET, SELF LOCKING 1/4-20 X .250	63
	-	1	1	1	1	-	22733-8	SCR, BHSC, SELF-LOCKING, 8-32 X .375	60
	-	1	1	1	1	-	2-22603-0	SCR, HEX HD CAP 8-32 X .312	59
	-	1	1	1	1	-	458537-2	PAWL, FEED	56
	-	4	4	4	4	-	2-21002-2	SCR, BTN SKT HD CAP 8-32 X .500	54
	-	2	2	2	2	-	2-21000-7	SCR, SKT HD CAP 8-32 X .500	53
	-	-	1	-	-	...	690602-6	CAM, PRE FEED, 1 5/8	49
	-	-	-	1	-	...	690602-5	CAM, PRE FEED, 1 1/8	48
	-	1	-	-	1	-	690501-4	CAM, POST FEED, 1 5/8	47
	-	1	1	1	1	-	459456-1	APPL. BASIC SUB ASSY (SIDE WISE MQCA)	46
	-	1	1	1	1	-	690191-1	PLUG,NYLON	45
	-	1	1	1	1	-	455673-1	RAM, SIDE FEED	44
	-	1	1	1	1	-	7-21002-9	SCR, BTN SKT HD CAP 5/16-24 X 1.00	41
	-	1	1	1	1	-	690125-1	SHIM SUB-ASSY	39
	-	1	1	1	1	-	469367-7	SHIM	38
	-	1	1	1	1	-	879103-3	FINE ADJUST HEAD ASSEMBLY	37
	-	2	2	2	2	-	2-21002-3	SCR, BTN SKT HD CAP 8-32 X .625	33
	-	1	1	1	1	-	21024-5	WASHER, SPRG LOCK, REG NO 10	32
	-	1	1	1	1	-	3-21000-4	SCR, SKT HD CAP 10-32 X .375	31
	-	1	1	1	1	-	1320908-9	SPACER, STRIP GUIDE	30
	-	1	1	1	1	-	1633091-1	ASSEMBLY, STRIP GUIDE	29
	-	1	1	1	1	-	1-455888-0	SPACER, CRIMPER	28
	-	1	1	1	1	-	1320928-1	PLATE, STRIP GUIDE	24
	-	1	-	-	1	-	690472-2	STRIPPER	22
	-	1	1	1	1	-	2-21000-7	SCR, SKT HD CAP 8-32 X .500	21
	-	4	4	4	4	-	21024-4	WASHER, SPRG LOCK, REG NO 8	20
	-	-	1	1	-	-	691353-1	STRIPPER	19
	-	1	1	1	1	-	690518-1	HOLD DOWN, TERMINAL	18
	-	1	-	-	-	-	679625-1	SHEAR HOLDER, FRONT (NO CUT)	17
	-	2	2	2	2	-	1-21002-6	SCR, BTN SKT HD CAP 6-32 X .250	16
△	-	1	1	1	1	-	690691-4	PLATE,REAR SHEAR	15
△	-	1	1	1	1	-	690462-1	SHEAR HOLDER, REAR	14
△	-	1	1	1	1	-	690463-1	FLOATING SHEAR, REAR	13
	-	2	2	2	2	-	3-22280-3	SPRING, COMPRESSION	12
	-	2	2	2	2	-	690461-1	STOP, SHEAR	11
△	-	-	1	1	1	-	690459-1	SHEAR HOLDER, FRONT	10
△	-	1	1	1	1	-	462006-1	FLOATING SHEAR, FRONT	9
	1	1	1	1	1	-	805887-4	ANVIL, COMBINATION	8
	-	1	1	1	1	-	690468-1	DEPRESSOR SHEAR, REAR	6
	-	1	1	1	1	-	3-455889-6	DEPRESSOR, SHEAR	5
	-	1	1	1	1	-	238011-6	BLOCK, CRIMPER SPACER	4
△	1	1	1	1	1	-	3-683453-3	CRIMPER, INSULATION PREMIUM	3
	-	1	1	1	1	-	455888-2	SPACER, CRIMPER	2
△	1	1	1	1	1	-	3-456402-3	CRIMPER, WIRE PREMIUM	1

POST-FEED 1 5/8 STROKE

PRE-FEED 1 1/8 STROKE

PRE-FEED 1 5/8 STROKE



-1 & -6

-2

-3

AMP 4005 REV 31MAR2006

Pro/ENGINEER DRAWING

CUSTOMER DRAWING

DRAWING NUMBER - 1855145 SHEET 2 OF 2 REV. A1

CUSTOMER VIEWABLE ASSEMBLY

Mouser Electronics

Authorized Distributor

Click to View Pricing, Inventory, Delivery & Lifecycle Information:

[TE Connectivity:](#)

[1855145-3](#)