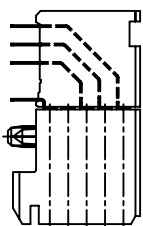
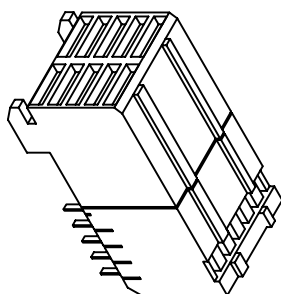
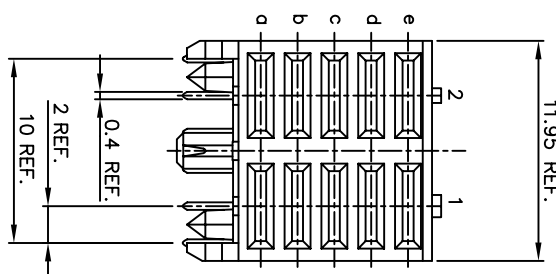
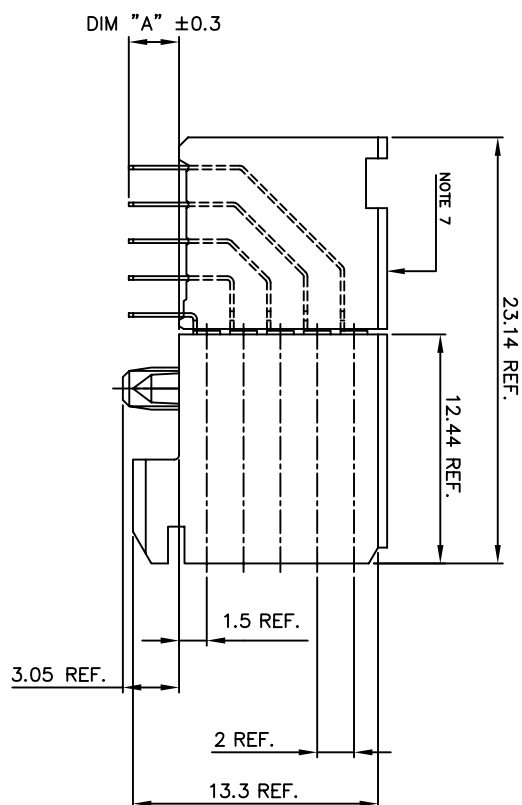
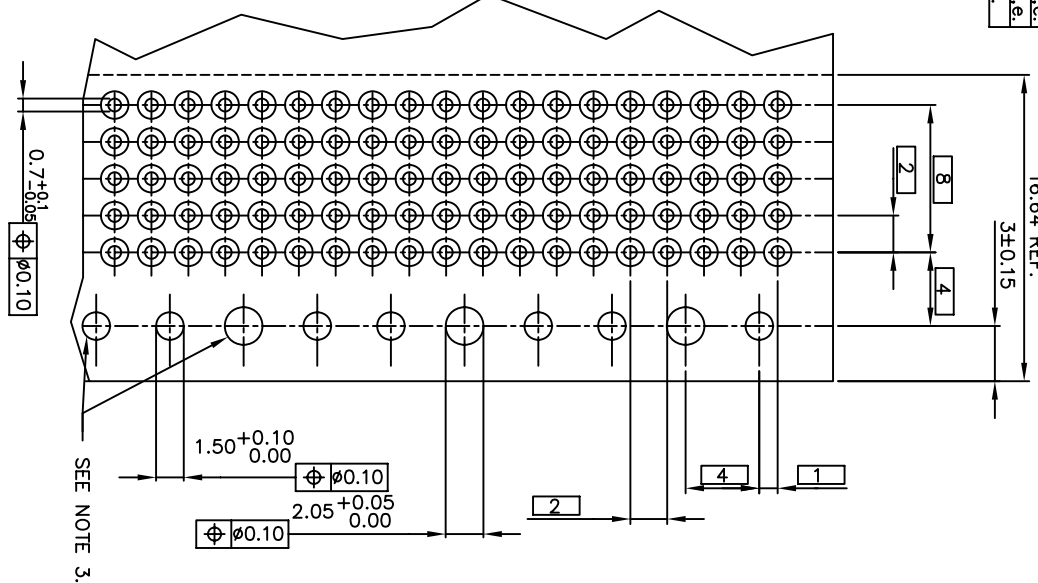


PLATING CONTACT AREA:	
DASH NR:	PERFORMANCE LEVEL
-1YY	TELCORDA CO
-2YY	CUSTOMER SPECIAL
-3YY	CUSTOMER SPECIAL
-9YY	TELCORDA CO
-1YYF	TELCORDA CO
-2YYF	CUSTOMER SPECIAL
-3YYF	CUSTOMER SPECIAL
-9YYF	TELCORDA CO

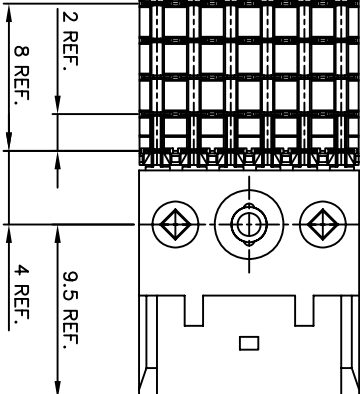
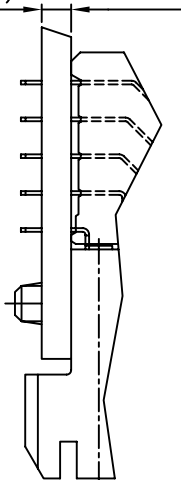
PC BOARD VERSIONS		
PRODUCT NR:	PCB THICKNESS	DM "A"
85676-X02LF	1.6	With Row a,b,c,d,e
85676-X12LF	2.4	With Row a,b,c,d,e
85676-X22LF	1.6	With Row a,c,d,e




85876-X22LF



RECOMMENDED HOLE PATTERN,  
COMPONENT SIDE.

PC BOARD THICKNESS  $\approx 0.2$   
(SEE TABLE)

- NOTES:
- 1 BODY MAT'L: LIQUID CRYSTAL POLYMER 30% GLASS FLAME RETARDANT ACC. UL 94-V0
  - 2 TERMINAL MATERIAL: PHOSPHOR BRONZE.
  - 3 INDICATED HOLES ARE UNPLATED.
  - 4 PLATING OF COMPLAINT SECTIONS 0.5-1.5 um SnPb 85-97 OR 0.5-1.5 um PURE Sn FOR LEAD FREE.
  - 5 PRODUCT MARKING: PART NUMBER & BATCH ID.
  - 6 SET BACK FOR PRESS BLOCK
  - 7 TOP SURFACE OF PRESS BLOCK MAY EXTEND UP TO 0.4MM HIGHER THAN HOUSING. THIS MAY AFFECT THE TAIL LENGTH BEFORE APPLICATION TO A BOARD.
  - 8 THIS PRODUCT MEETS EUROPEAN UNION DIRECTIVES AND OTHER COUNTRY REGULATIONS AS DESCRIBED IN GS--22-008.
  - 9 THE HOUSING WILL WITHSTAND EXPOSURE TO 260DEGREE PEAK TEMPERATURE FOR 10 SECONDS IN A WAVE SOLDER APPLICATION.

mpt1. code		SEE NOTES		tolerances unless otherwise specified		CUSTOMER	
lit	ecn no	date		0.X	±2.30	COP-1	
H	161-16187MH	10/20/13	linear	0.X	±0.15	 <b>ELECTRONICS</b> <a href="http://www.docuconnect.com">www.docuconnect.com</a>	
			0.XXX	0.XXX	±0.05	title <b>5 ROW POWER S.T.B.</b> RECEPT 12mm MOD. P.P	
			angles 0.X	±2°	±2°	prodng family <b>MEITRA</b>	
D	004-0107 CUJ	04/12/28	DR. VASSIO-HERNS	941005	mm	code <b>213</b>	
E	0007-0456Cant11/15/07	07/07/11	EL TEJLEN	941005	mm	stdng prod <b>85876</b>	
F	0006-0111 TER 8/15/08	01/11/08	EL TEJLEN	941005	scale	sheet <b>1 of 1</b>	
G	0011-0131A/11/05/08	08/08/08	EL TEJLEN	941005	5:1		
index	revision	g					
sheet	sheet	1					

# Mouser Electronics

Authorized Distributor

Click to View Pricing, Inventory, Delivery & Lifecycle Information:

[FCI / Amphenol:](#)

[85876-112LF](#) [85876-102LF](#) [85876-302LF](#) [85876-122LF](#)