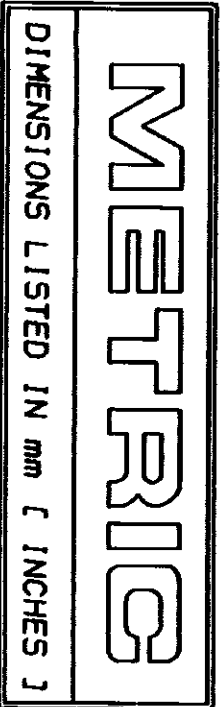
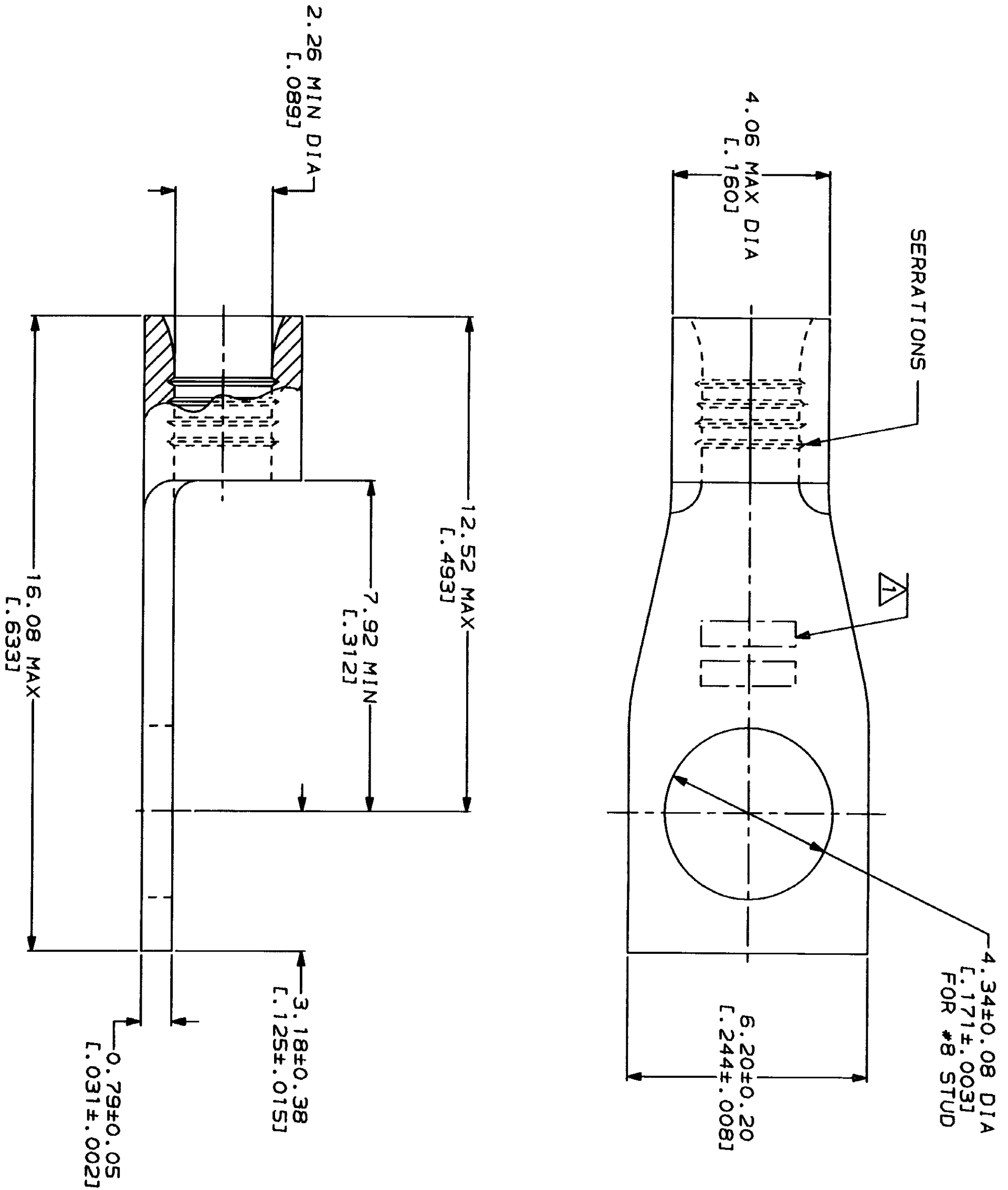


LOC		DIST		REV		REVISIONS		DATE		APP	
G	14	P	P	ZONE	LTR	DESCRIPTION					
						D	REVISED PER 0720-0230-93		2/28/94		W.D.M.



AMP WIRE RANGE		UL E13288 Listed	
16-14 AWG STRANDED		16-14 AWG STRANDED	
LR7189 Certified		MILITARY P/N AND CLASS	
NOT CERTIFIED		NOT APPLICABLE	

△ STAMP AMP 16-14* APPROX AS SHOWN



AMP INCORPORATED CUSTOMER SERVICE SYSTEMS		MAX RECOMMENDED OPERATING TEMPERATURE: 170°C MAX	
FOR ADDITIONAL PRODUCT INFORMATION OR COPIES OF DRAWINGS AND TECHNICAL DOCUMENTS	1-800-522-6752	VOLTAGE RATING: NOT APPLICABLE	
FOR APPLICATION TOOLING INFORMATION	1-800-722-1111	WIRE CROSS SECTIONAL AREA RANGE: 1.04-2.62mm² [2,050-5,180] CIR MILS STRANDED	
FOR ORDER ENTRY	1-800-526-5142	THIS DRAWING IS A CONTROLLED DOCUMENT FOR AMP INCORPORATED. IT IS SUBJECT TO CHANGE WITHOUT NOTICE. REVISED EDITIONS SHOULD BE CONSULTED FOR THE LATEST REVISION.	

DO NOT SCALE PRINT. UNLESS SPECIFIED DIMENSIONS IN mm [INCHES] TOLERANCES ON: 2 PLC DEC ± - 3 PLC DEC ± - ANGLES ± -		DR 1-28-93 TA BRINKMAN		NAME	
MATERIAL COPPER PER ASTM B-152 ANNEALED		CHK 1-28-93 DA PATTERSON		AMP Incorporated Harrisburg, PA 17105-3608	
FINISH TIN PLATE 0.00254L [0.00100] MIN THK PER MIL-T-10727		APPD 1-28-93 DE MILLER		TERMINAL, RECTANGULAR TONGUE, BUDGET	
APPLICATION SPEC		APPD 1-28-93 JL HECKLEY		SIZE CAGE CODE 00779 DRAWING NO C-35278	
WEIGHT -		SCALE 10:1		SHEET 1 OF 1	

Mouser Electronics

Authorized Distributor

Click to View Pricing, Inventory, Delivery & Lifecycle Information:

[TE Connectivity:](#)

[35278](#)