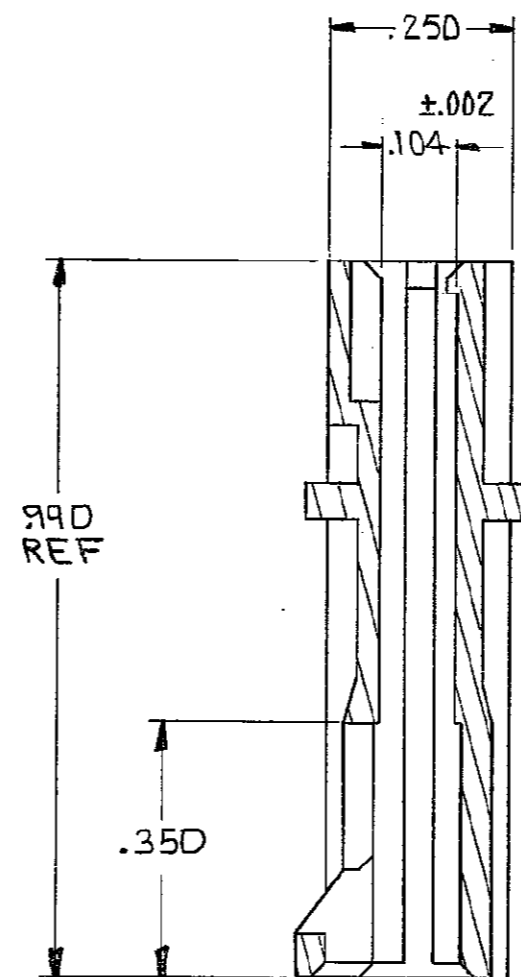
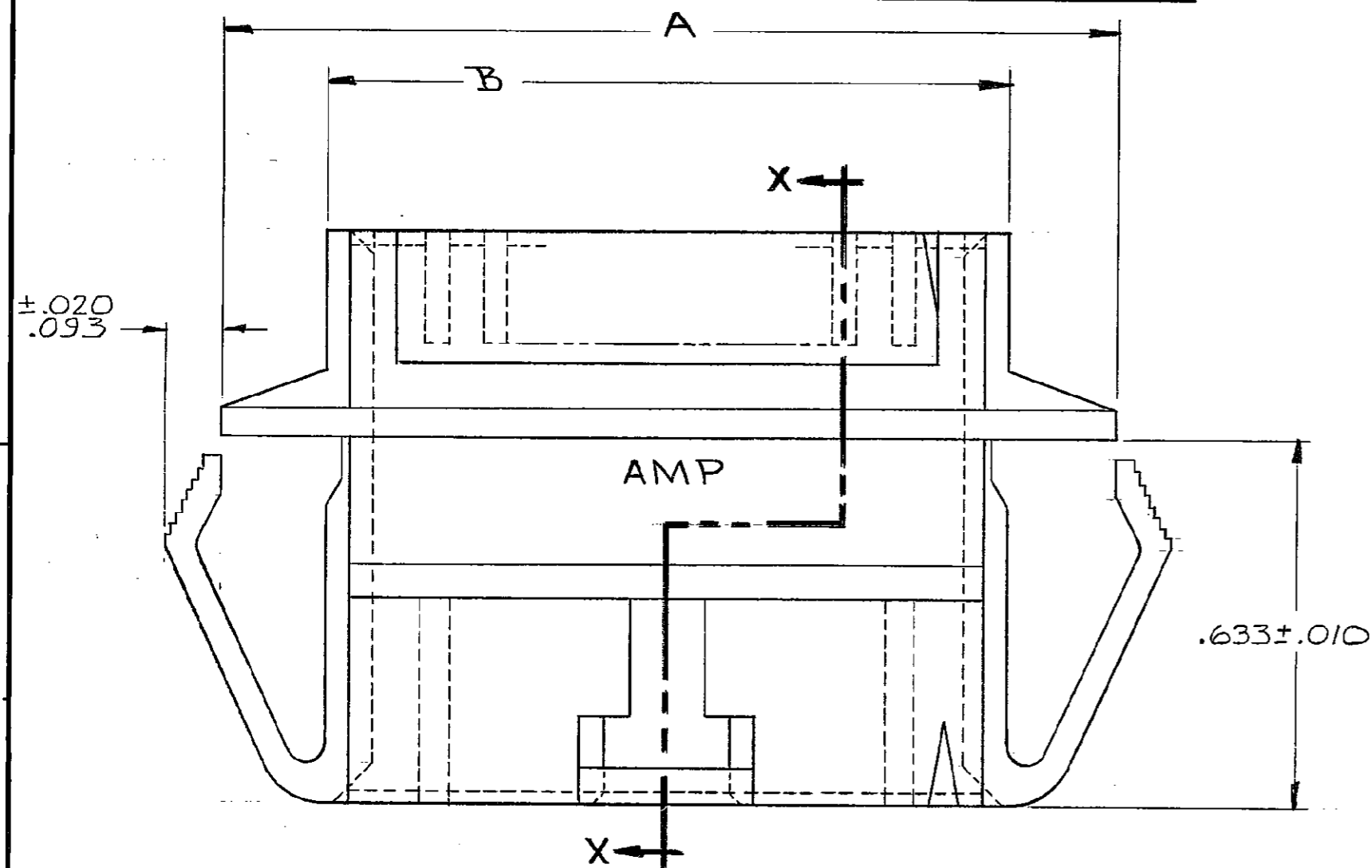


THIS DRAWING IS UNPUBLISHED. RELEASED FOR PUBLICATION

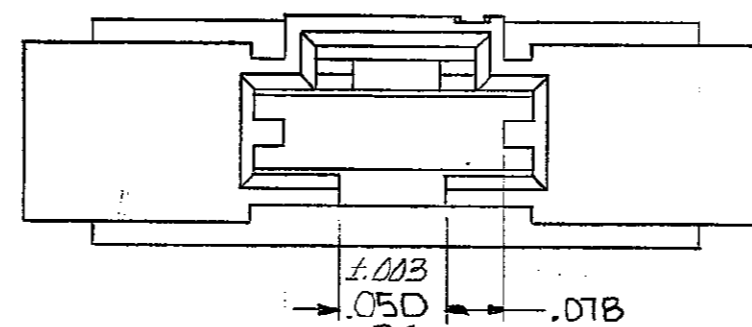
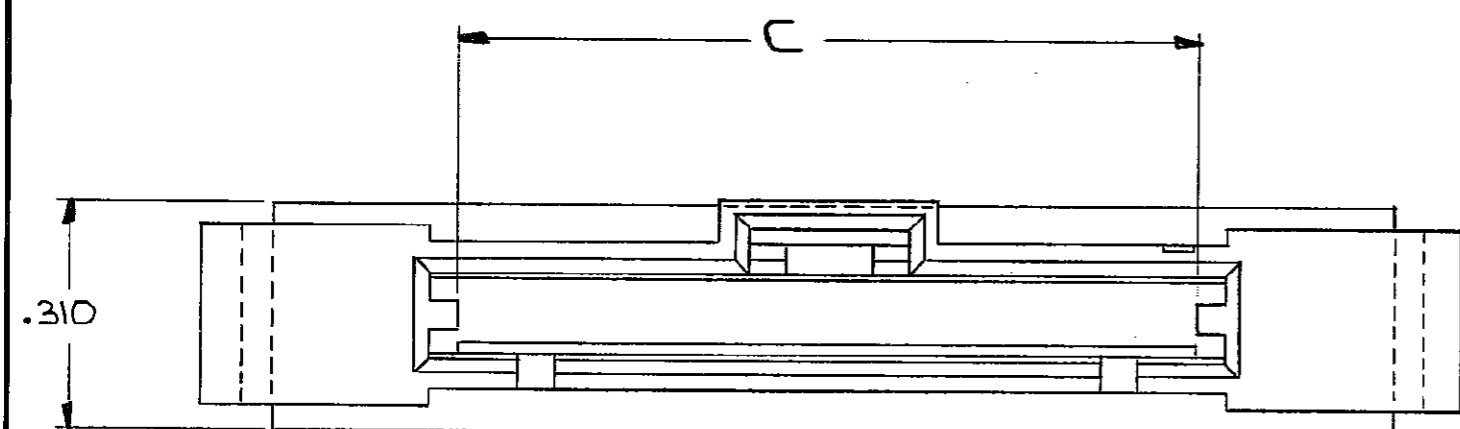
© COPYRIGHT

| REVISIONS |   |      |     |                           |         |          |
|-----------|---|------|-----|---------------------------|---------|----------|
| P         | F | ZONE | LTR | DESCRIPTION               | DATE    | APPROVED |
|           |   | G2   |     | REVISED PER ECO-11-005140 | 30MAR11 | HMR      |

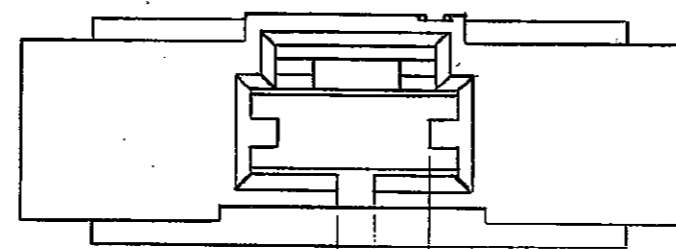


SECTION X-X

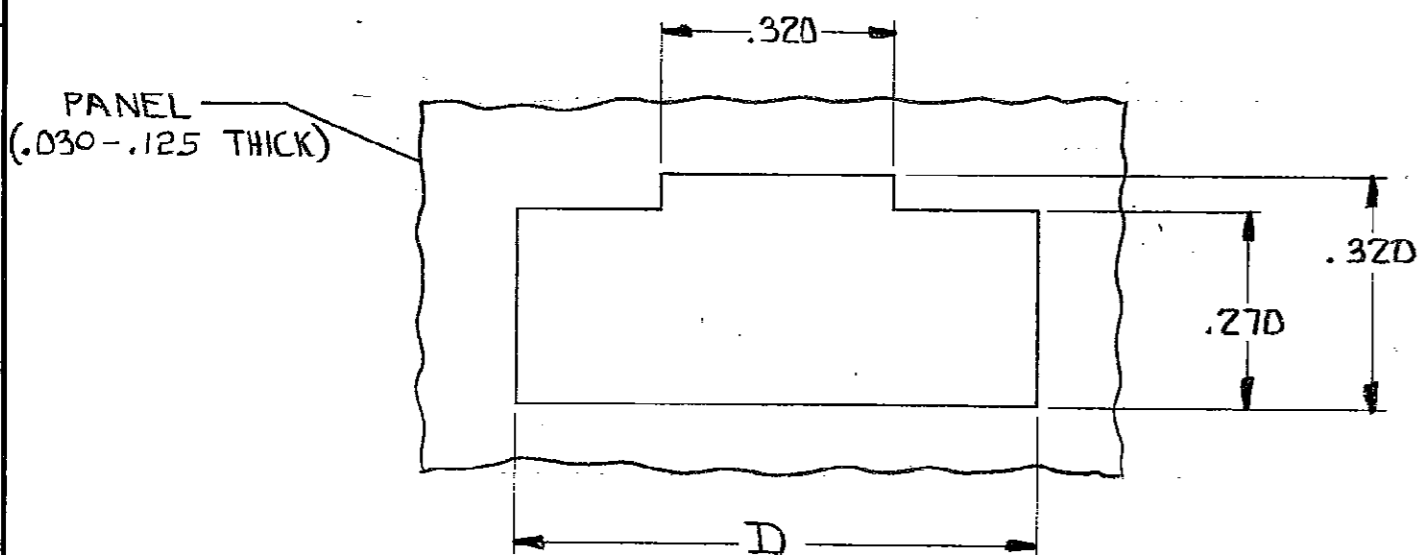
- 1. SHROUD ACCEPTS RIBBED PIN ASSEMBLIES
- 2. SHROUD MATES WITH LATCHING RECEPTACLE ASSEMBLIES
- 3. OBSOLETE PARTS: OBSOLETE CIS STREAMLINING PER D.RENAUD/D.SINISI



DETAIL FOR -2 ONLY (3 POSITION)



DETAIL FOR -1 ONLY (2 POSITION)



RECOMMENDED PANEL CUTOUT

| 3 | OBSOLETE | 2.925 | 2.505 | 2.665 | 3.035 | 25 | 2-103682-4 |
|---|----------|-------|-------|-------|-------|----|------------|
|   |          | 2.825 | 2.405 | 2.565 | 2.935 | 24 | 2- -3      |
|   | OBSOLETE | 2.725 | 2.305 | 2.465 | 2.835 | 23 | 2- -2      |
|   | 3        | 2.625 | 2.205 | 2.365 | 2.735 | 22 | 2- -1      |
|   |          | 2.525 | 2.105 | 2.265 | 2.635 | 21 | 2- -0      |
|   |          | 2.425 | 2.005 | 2.165 | 2.535 | 20 | 1- -9      |
|   |          | 2.325 | 1.905 | 2.065 | 2.435 | 19 | 1- -8      |
|   | OBSOLETE | 2.225 | 1.805 | 1.965 | 2.335 | 18 | 1- -7      |
|   | 3        | 2.125 | 1.705 | 1.865 | 2.235 | 17 | 1- -6      |
|   |          | 2.025 | 1.605 | 1.765 | 2.135 | 16 | 1- -5      |
|   | OBSOLETE | 1.925 | 1.505 | 1.665 | 2.035 | 15 | 1- -4      |
|   |          | 1.825 | 1.405 | 1.565 | 1.935 | 14 | 1- -3      |
|   |          | 1.725 | 1.305 | 1.465 | 1.835 | 13 | 1- -2      |
|   |          | 1.625 | 1.205 | 1.365 | 1.735 | 12 | 1- -1      |
|   | OBSOLETE | 1.525 | 1.105 | 1.265 | 1.635 | 11 | 1- -0      |
|   |          | 1.425 | 1.005 | 1.165 | 1.535 | 10 | -9         |
|   |          | 1.325 | .905  | 1.065 | 1.435 | 9  | -8         |
|   |          | 1.225 | .805  | .965  | 1.335 | 8  | -7         |
|   |          | 1.125 | .705  | .865  | 1.235 | 7  | -6         |
|   |          | 1.025 | .605  | .765  | 1.135 | 6  | -5         |
|   |          | .925  | .505  | .665  | 1.035 | 5  | -4         |
|   |          | .825  | .405  | .565  | .935  | 4  | -3         |
|   |          | .725  | .305  | .465  | .835  | 3  | -2         |
|   |          | .625  | .205  | .365  | .735  | 2  | 103682-1   |

103682

|  |             |         |  |         |            |
|--|-------------|---------|--|---------|------------|
| UNLESS OTHERWISE SPECIFIED DIMENSIONS ARE IN INCHES.<br>TOLERANCES ON:<br>DECIMALS ±.005<br>ANGLES ± | CONTRACT NO |         |  |         |            |
|  | DR          |         |  | 5/23/85 |            |
| MATERIAL<br>BLACK THERMOPLASTIC  | APPD        | 5/29/85 | NAME<br>SHROUD, PIN, PANEL MOUNT, AMPMODU<br>MTE, SINGLE ROW, .100 Ø |         |            |
|  | APPD        | 5/29/85 |  |         |            |
| FINISH   | OSGN APPD   | 5/29/85 | SIZE   | FSCM NO | DRAWING NO |
|  | OTHER APPD  |         | C  | 00779   | 103682     |
| SCALE  |             | SHEET   |  |         |            |

# Mouser Electronics

Authorized Distributor

Click to View Pricing, Inventory, Delivery & Lifecycle Information:

[TE Connectivity:](#)

[103682-2](#)