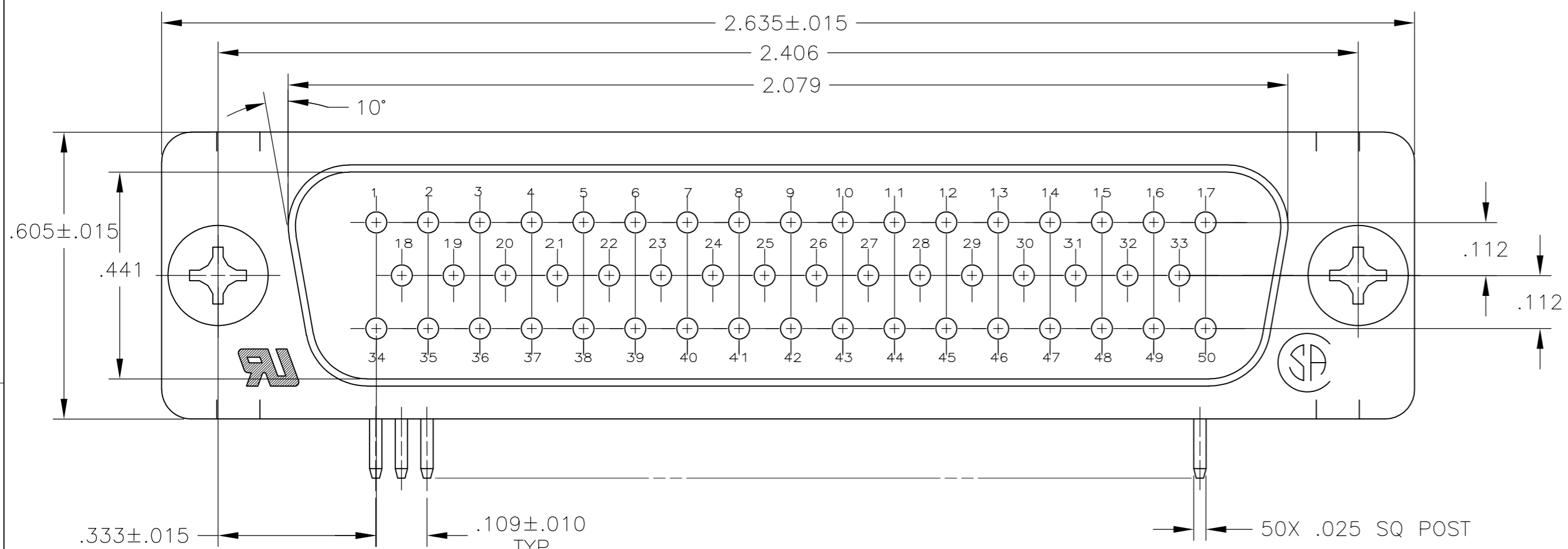
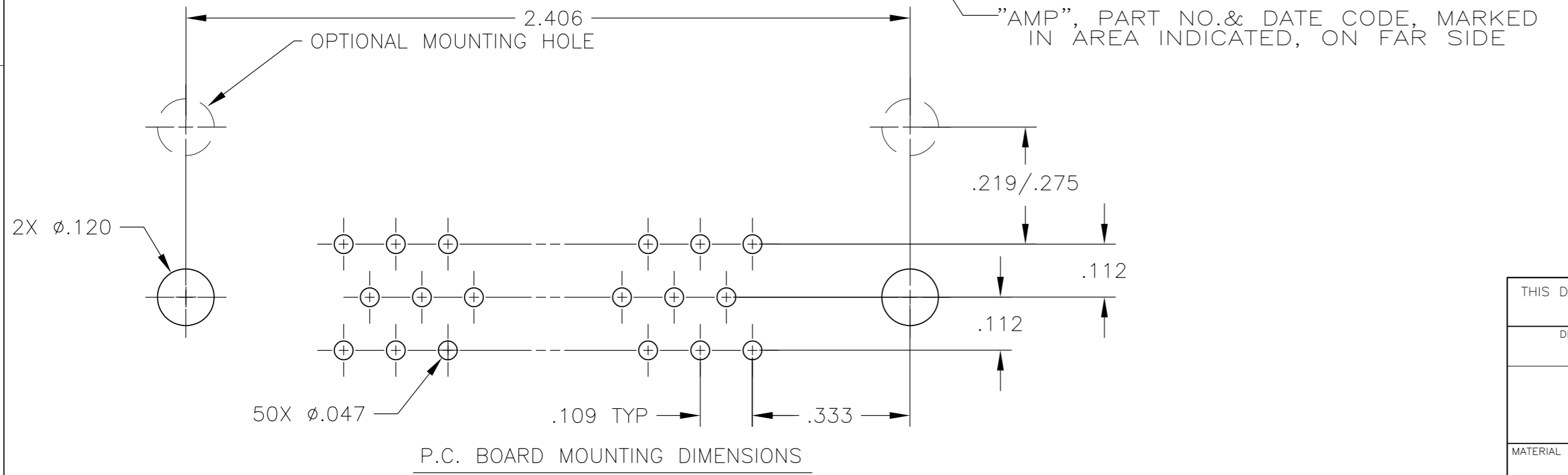
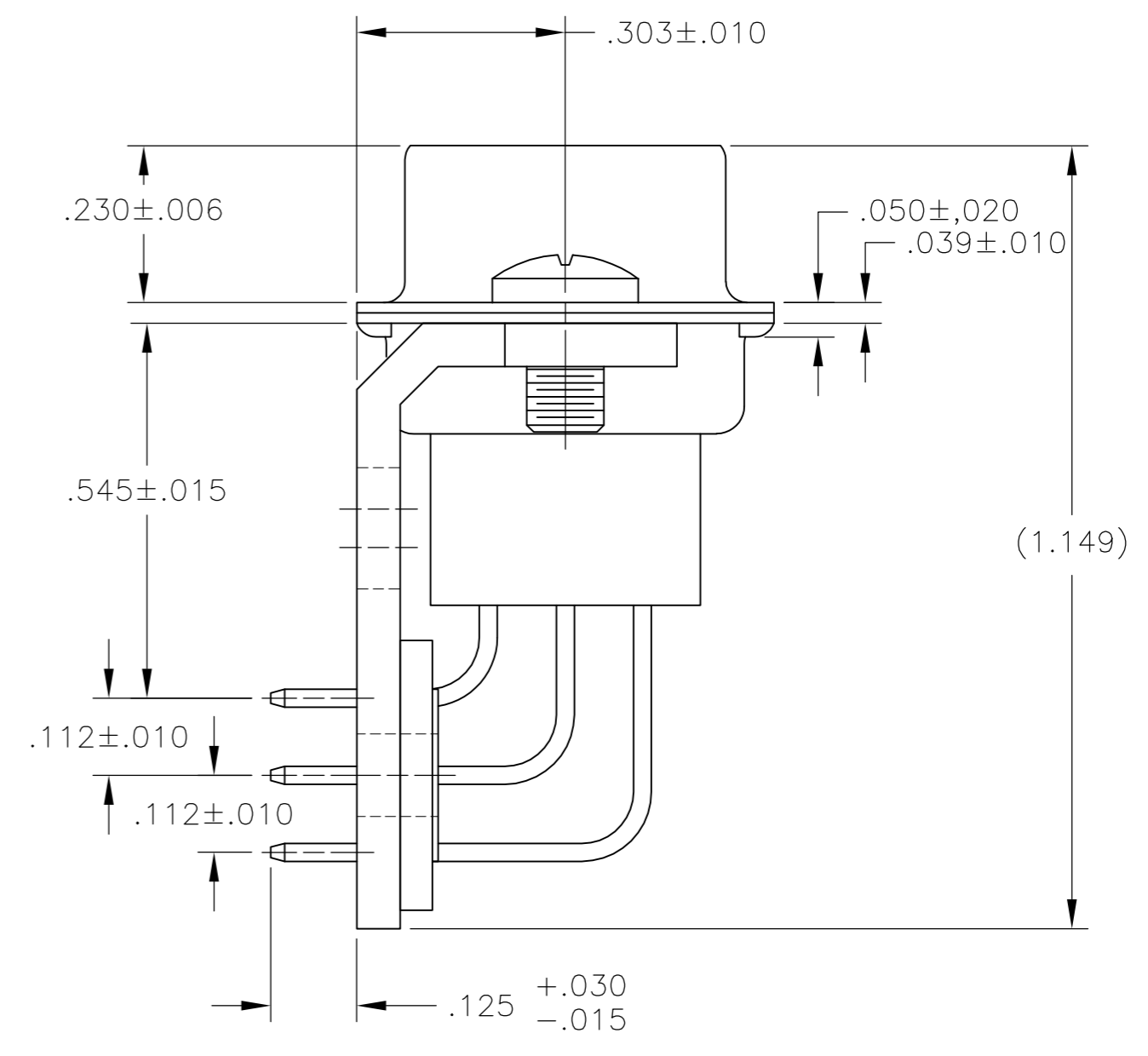
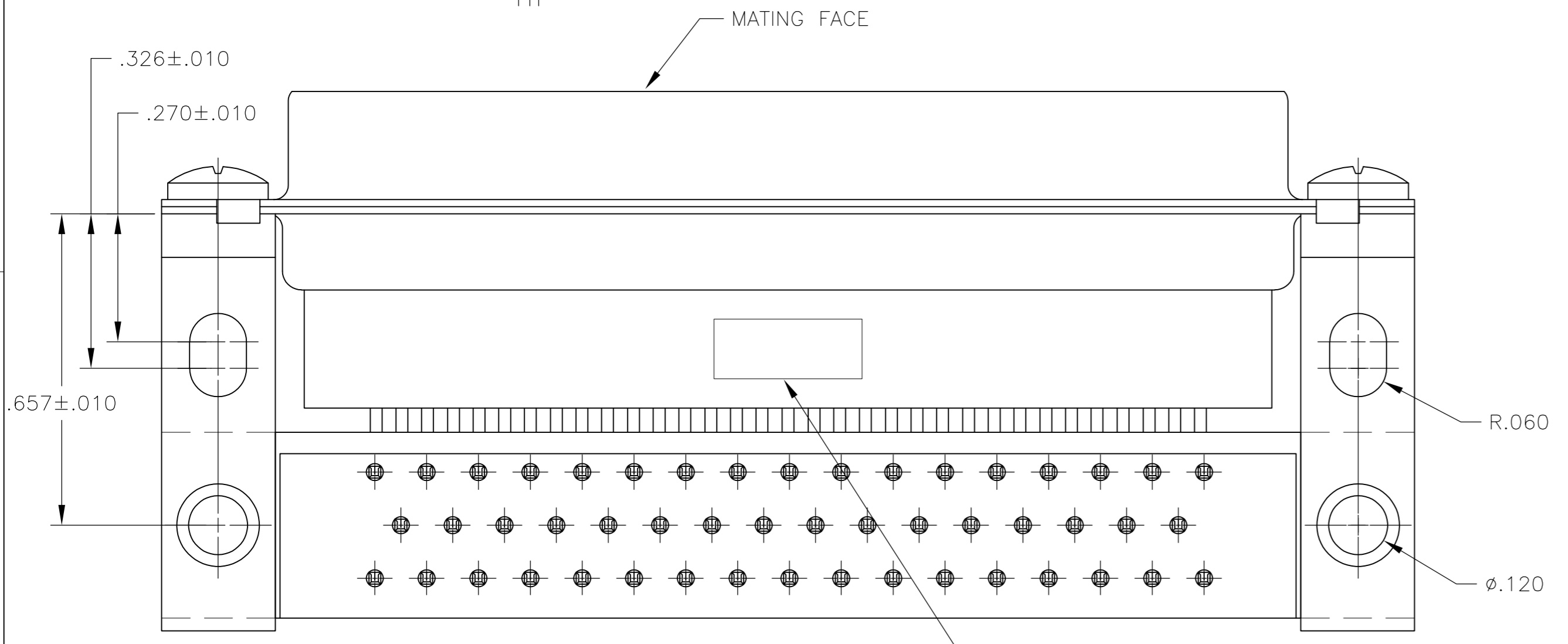


THIS DRAWING IS UNPUBLISHED. RELEASED FOR PUBLICATION
 © COPYRIGHT 2005 By - ALL RIGHTS RESERVED.

LOC		DIST		REVISIONS			
P	LTR	DESCRIPTION		DATE	DWN	APVD	
GP	00	U	REVISED PER ECO-14-011808	09AUG2014	AP	SB	



- 1 CONNECTOR MATES WITH ANY 50 POS. RECEPTACLE IN AMPLIMITE SERIES & COMPLIES WITH AMP SPEC. 108-40, 005 WHERE APPLICABLE.
- 2 MOLDED PARTS: GLASS-FILLED PBT OR GLASS-FILLED NYLON, UL94V-0 RATED. COLOR: BLACK
SHELLS & BRACKETS: CARBON STEEL
CONTACTS: BRASS
- 3 SHELL: .000200 MIN ZINC WITH YELLOW CHROMATE COATING.
CONTACTS: GOLD PLATED FOR LENGTH OF .150 MIN FROM MATING END, GOLD FLASH IN MATED AREA.
.000100 MIN TIN-LEAD ON OPPOSITE END, BOTH OVER
.000050 MIN NICKEL.
- 4 SHELL: .000200 MIN ZINC WITH YELLOW CHROMATE COATING.
CONTACTS: GOLD PLATED FOR LENGTH OF .150 MIN FROM MATING END, .000030 MIN GOLD IN MATED AREA,
.000100 MIN TIN-LEAD ON OPPOSITE END, BOTH OVER
.000050 MIN NICKEL.
OR
GOLD FLASH OVER PALLADIUM NICKEL PLATED FOR LENGTH OF .150 MIN FROM MATING END,
.000030 MIN PALLADIUM NICKEL IN MATED AREA,
.000100 MIN TIN-LEAD ON OPPOSITE END, BOTH OVER
.000050 MIN NICKEL.
- 5 SHELL: .000200 MIN ZINC WITH YELLOW CHROMATE COATING.
CONTACTS: GOLD PLATED FOR LENGTH OF .150 MIN FROM MATING END, .000050 MIN GOLD IN MATED AREA.
GOLD FLASH ON REMAINDER, ALL OVER
.000050 MIN NICKEL.



OBSELETE	5	205869-3
	4	205869-2
	3	205869-1
CONTACT FINISH		PART NUMBER

THIS DRAWING IS A CONTROLLED DOCUMENT.		DWN J. POLIGNONE 01FEB07	 TE Connectivity
DIMENSIONS: INCHES		CHK E. BRIANT 01FEB07	
TOLERANCES UNLESS OTHERWISE SPECIFIED:		APVD E. BRIANT 01FEB07	NAME PLUG ASSEMBLY, SIZE 5, 50 POSITION, RIGHT ANGLE, .545 SERIES, .025 SQ. POSTS, AMPLIMITE HDP
0 PLC ± -		PRODUCT SPEC 108-40025	
1 PLC ± -		APPLICATION SPEC 114-40013	SIZE A2
2 PLC ± -		WEIGHT -	CAGE CODE 00779
3 PLC ± ±.005			DRAWING NO C=205869
4 PLC ± -			RESTRICTED TO -
4 PLG ANGLES ± ±2°			SCALE 4:1
MATERIAL 2	FINISH 3 4 5	CUSTOMER DRAWING	SHEET 1 of 1
			REV U

Mouser Electronics

Authorized Distributor

Click to View Pricing, Inventory, Delivery & Lifecycle Information:

[TE Connectivity:](#)

[205869-1](#)