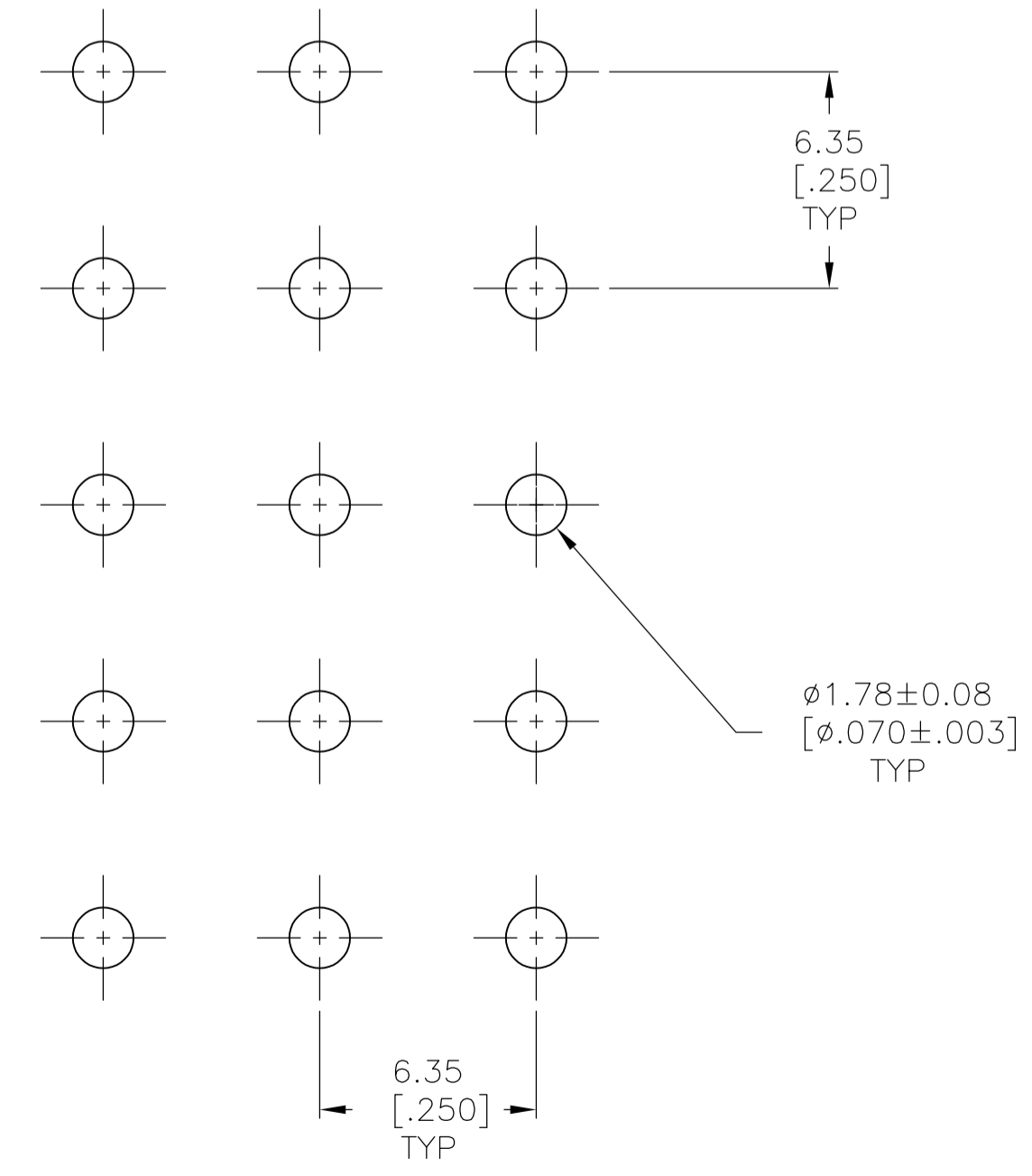
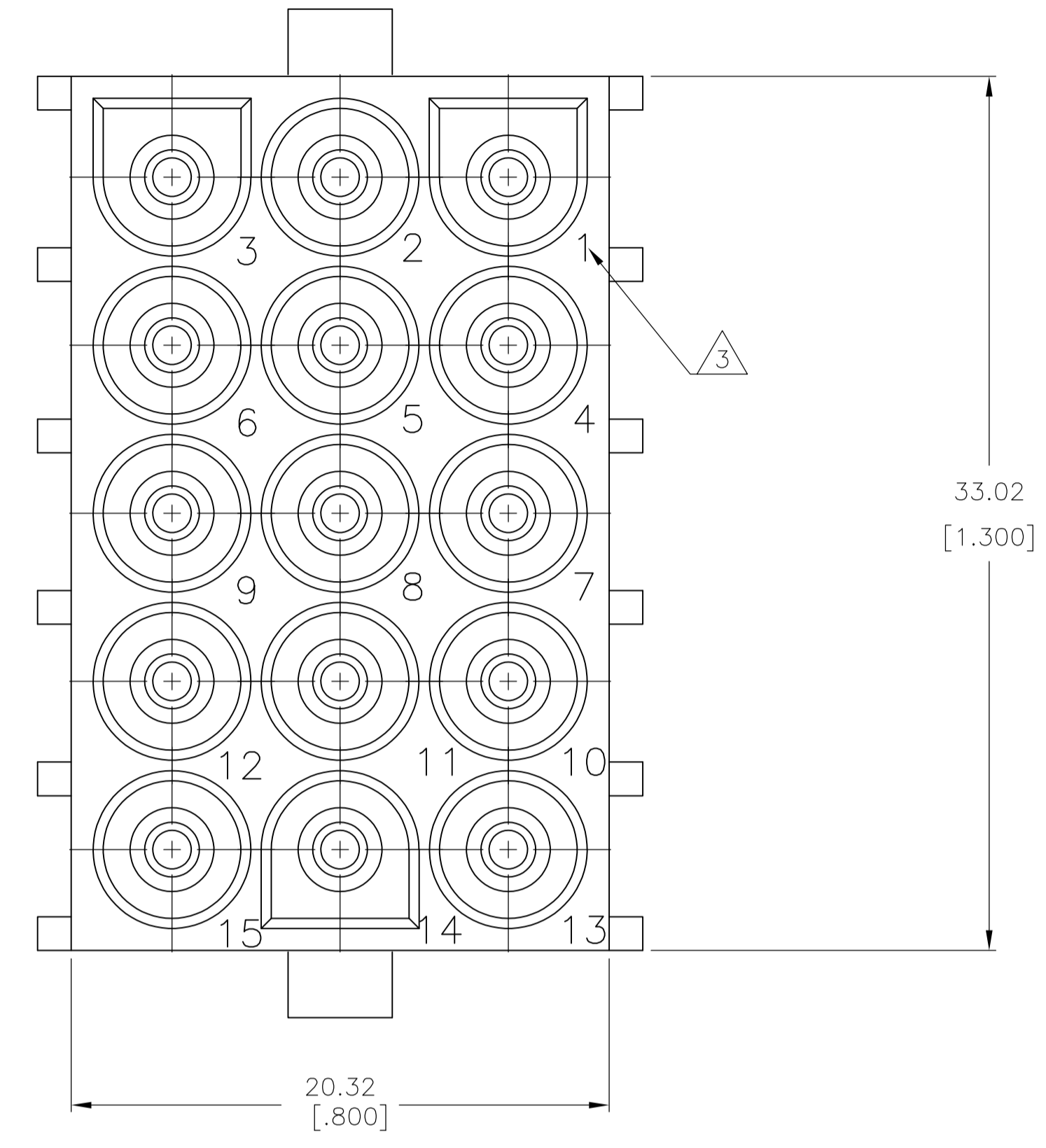
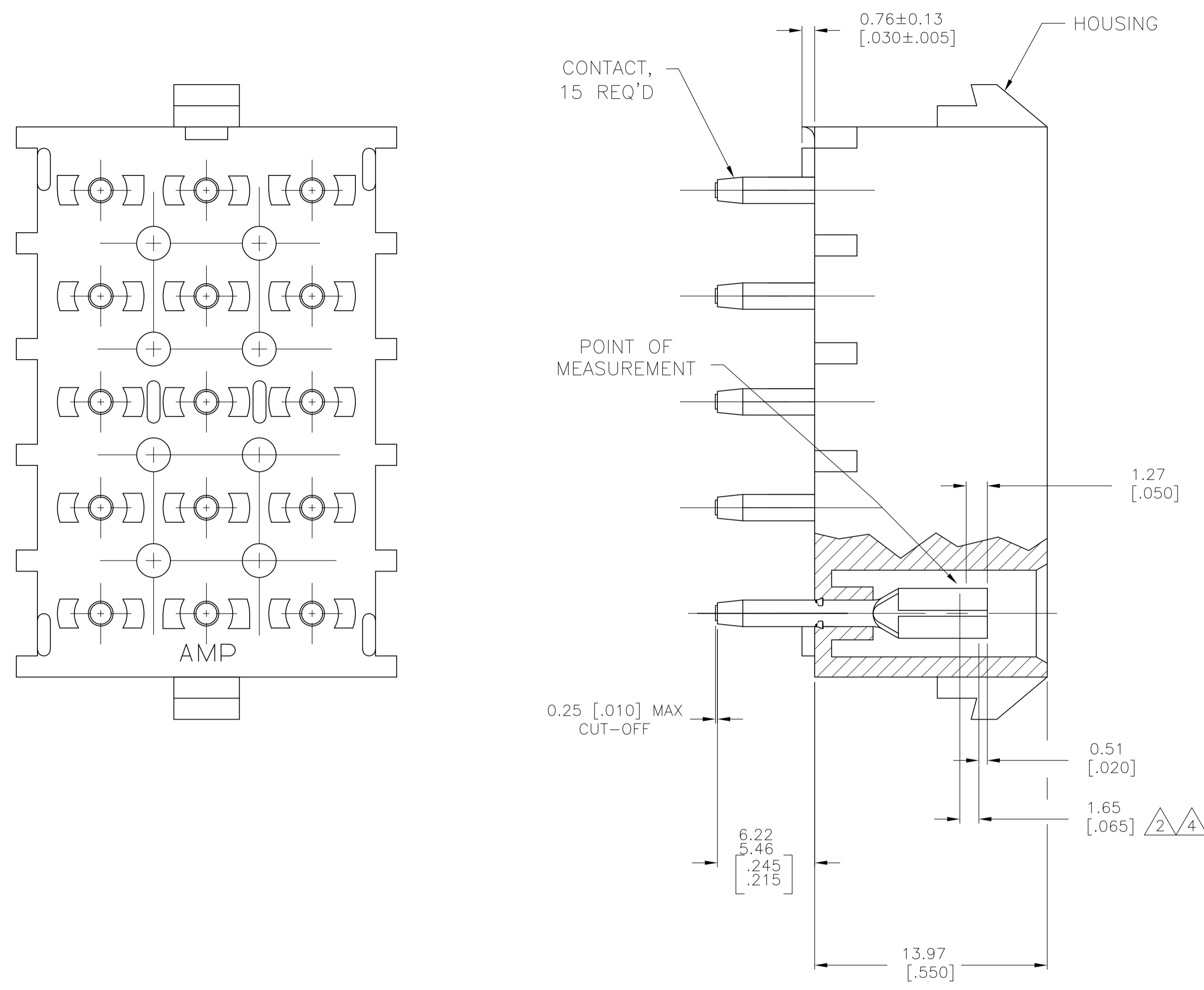


LOC		DIST		REVISIONS			
CM	00	REV	DESCRIPTION	DATE	BY	CHK	APPV
		L2	REVISED PER ECR-12-011660	28JAN13		KH	TM
		L3	REVISED PER ECR-14-018199	06JAN15		AV	DZ



RECOMMENDED LAYOUT FOR 3.18 [.125] THICK PC BOARD

- 1 PARTS MUST COMPLY WITH TE SOLDERABILITY SPEC 109-11-3.
- 2 CONTACT IS STAMPED FROM PRE-PLATED STOCK WHICH IS PLATED OVERALL WITH 0.00127 [.000050] NICKEL, THEN STRIPED WITH 0.00076 [.000030] GOLD IN CONTACT AREA INDICATED AND TIN-LEAD ON SOLDER TAIL END.
- 3 CIRCUIT IDENTIFICATION CHARACTERS ARE ADJACENT TO THE INDICATED CAVITIES, BUT LOCATION AND ORIENTATION MAY DIFFER FROM PRINT.
- 4 CONTACT IS PLATED OVERALL WITH 0.00127 [.000050] NICKEL, THEN 0.00076 [.000030] GOLD OVER CONTACT LENGTH INDICATED AND MATTE TIN ON SOLDER TAIL END.
- 5 SUPERSEDED BY 350837-4

PH BRZ GOLD ⁴	NYLON, 94V-0	350837-4
PH BRZ GOLD ²	NYLON, 94V-0	350837-2
PH BRZ TIN	NYLON, 94V-0	350837-1
CONTACT	HOUSING	PART NO

THIS DRAWING IS A CONTROLLED DOCUMENT.

DIMENSIONS: mm [INCHES]	TOLERANCES UNLESS OTHERWISE SPECIFIED:	DWG K. WHITAKER 11OCT2005	TE Connectivity
0 PLC ±	1 PLC ±	CHK S. RIDGILL 11OCT2005	
2 PLC ±	3 PLC ± 0.13 [.005]	APPV S. RIDGILL 11OCT2005	NAME 15 CIRCUIT UNIVERSAL MATE-N-LOK (TM) P.C. BOARD SOCKET HEADER ASSEMBLY
4 PLC ±	ANGLES ±	APPLICATION SPEC	SIZE A1
MATERIAL SEE TABLE	FINISH SEE TABLE	WEIGHT	CAGE CODE 00779
CUSTOMER DRAWING		SCALE 5:1	DRAWING NO 350837

RESTRICTED TO: SHEET 1 OF 1 REV L3