

# Contact insert - RC-09P1N120000 - 1594887


Please be informed that the data shown in this PDF Document is generated from our Online Catalog. Please find the complete data in the user's documentation. Our General Terms of Use for Downloads are valid (<http://phoenixcontact.com/download>)



Contact insert, number of positions: 8+1, type of contact: Pin, Solder connection



## Key Commercial Data

Packing unit	10 pc
GTIN	 4 046356 203883
GTIN	4046356203883

## Technical data

### General

Insertion/withdrawal cycles mechanical	50
Direction of rotation of contact chamber numbering	Standard
Coding	N
Contact connection method	Solder connection
Type of contacts	Pin
Number of positions	9
Contact diameter of power contacts	2 mm
Litz wire cross section of power contacts min.	0.08 mm <sup>2</sup>
Litz wire cross section of power contacts max.	2.5 mm <sup>2</sup>
Nominal current per power contact at 25°C	20 A
Contact diameter of signal contacts	1 mm
Litz wire cross section of signal contacts min.	0.08 mm <sup>2</sup>
Litz wire cross section of signal contacts max.	1 mm <sup>2</sup>
Nominal current per signal contact at 25°C	8 A

### Material

Insulator material	PBT
Contact material	CuZn

# Contact insert - RC-09P1N120000 - 1594887

## Technical data

### Material

Contact surface	Nickel-plated, gold coating
-----------------	-----------------------------

### Specifications according to DIN EN 61984:2001

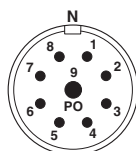
Nominal / operating voltage of power contacts	300 V
Rated surge voltage of power contacts	2.5 kV
Overvoltage category of power contacts	II
Degree of pollution of power contacts	3
Nominal / operating voltage of signal contacts	300 V
Rated surge voltage of signal contacts	2.5 kV
Overvoltage category of signal contacts	II
Degree of pollution of signal contacts	3

### Environmental Product Compliance

REACH SVHC	Lead 7439-92-1
China RoHS	Environmentally Friendly Use Period = 50
	For details about hazardous substances go to tab "Downloads", Category "Manufacturer's declaration"

## Drawings

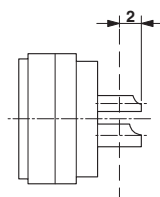
Schematic diagram



Schematic diagram



Schematic diagram



## Approvals

Approvals

Approvals

EAC

## Contact insert - RC-09P1N120000 - 1594887

### Approvals

Ex Approvals

---

#### Approval details

EAC		B.01742
-----	---	---------

---

Phoenix Contact 2018 © - all rights reserved  
<http://www.phoenixcontact.com>

PHOENIX CONTACT GmbH & Co. KG  
Flachsmarktstr. 8  
32825 Blomberg  
Germany  
Tel. +49 5235 300  
Fax +49 5235 3 41200  
<http://www.phoenixcontact.com>

# Mouser Electronics

Authorized Distributor

Click to View Pricing, Inventory, Delivery & Lifecycle Information:

[Phoenix Contact:](#)

[1594887](#)