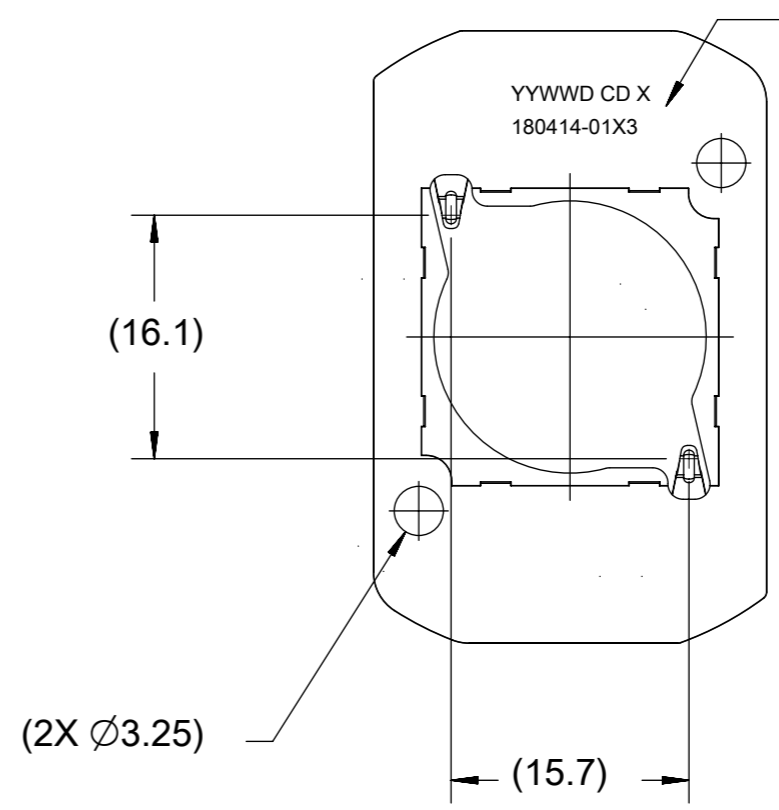
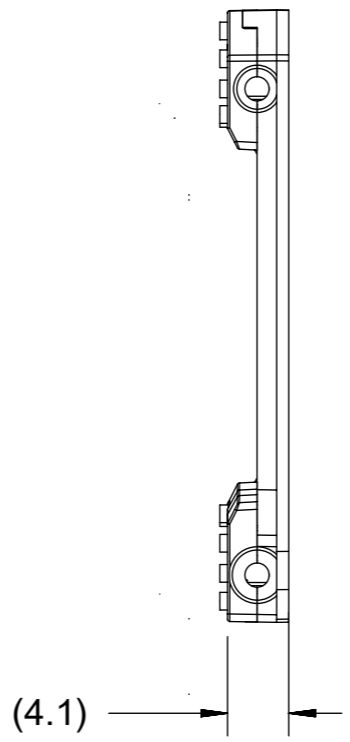
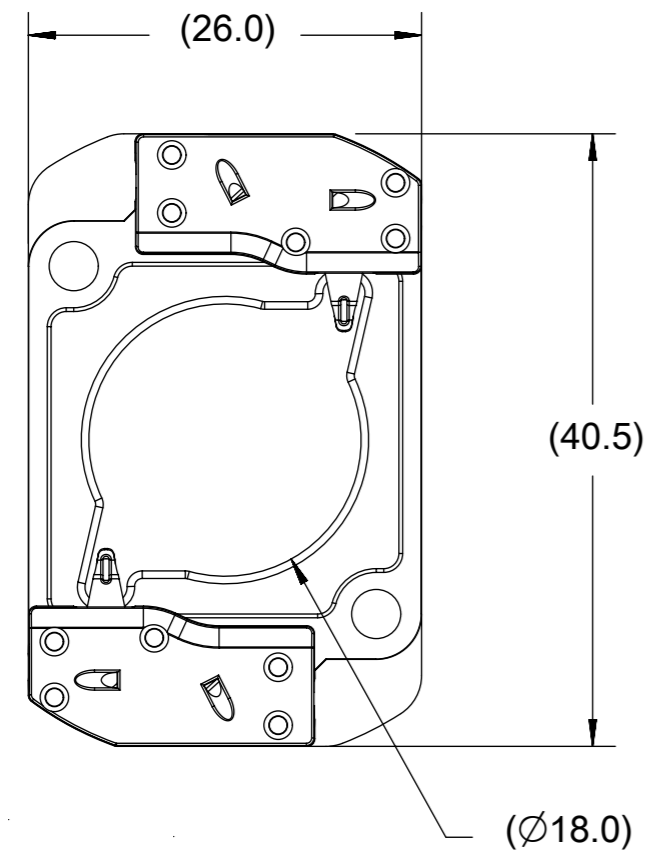
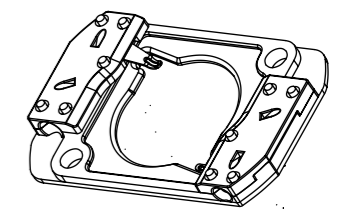


PART NUMBER	DESCRIPTION	MATERIAL	AGENCY APPROVAL
180414-0103	COB LED HOLDER 19.0MM X 19.0MM SQUARE	POLYAMIDE (PA66) GLASS FILLED, COLOR: NATURAL	UL496 FILE E345583
180414-0113	COB LED HOLDER 19.0MM X 19.0MM SQUARE	POLYESTER (PBT) GLASS FILLED, COLOR: WHITE	UL496 FILE E345583
180414-0213	COB LED HOLDER 19.0MM X 19.0MM SQUARE WITH TAB CAP	POLYESTER (PBT) GLASS FILLED, COLOR: WHITE	UL496 FILE E345583

HOLDER ASSEMBLY
P/N 180414-0103
P/N 180414-0113



PART MARKED WITH
DATE CODE (YYWWD)
MFG PLANT (CD)
REVISION (X)
PART NUMBER (180414-01X3)

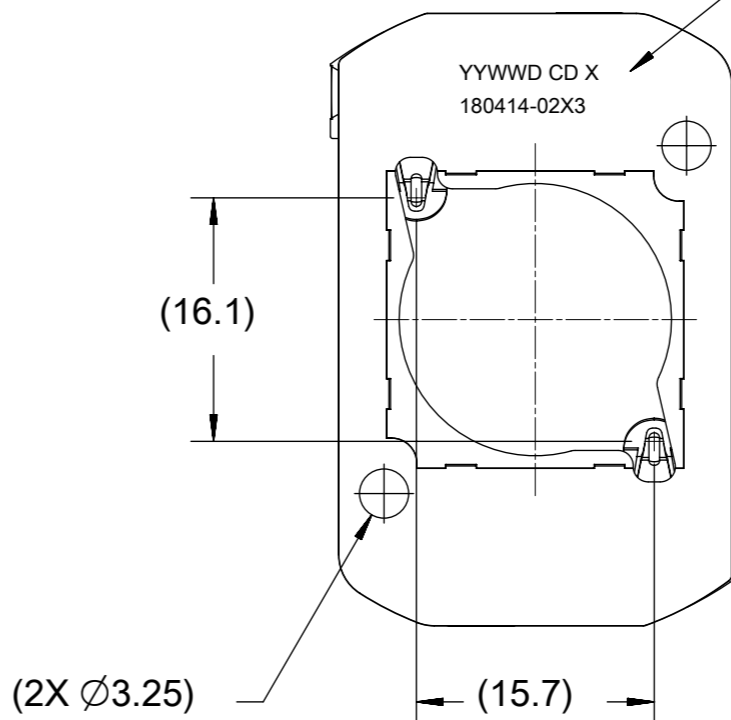
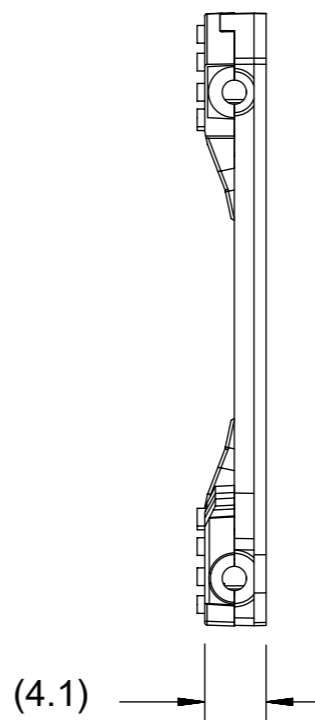
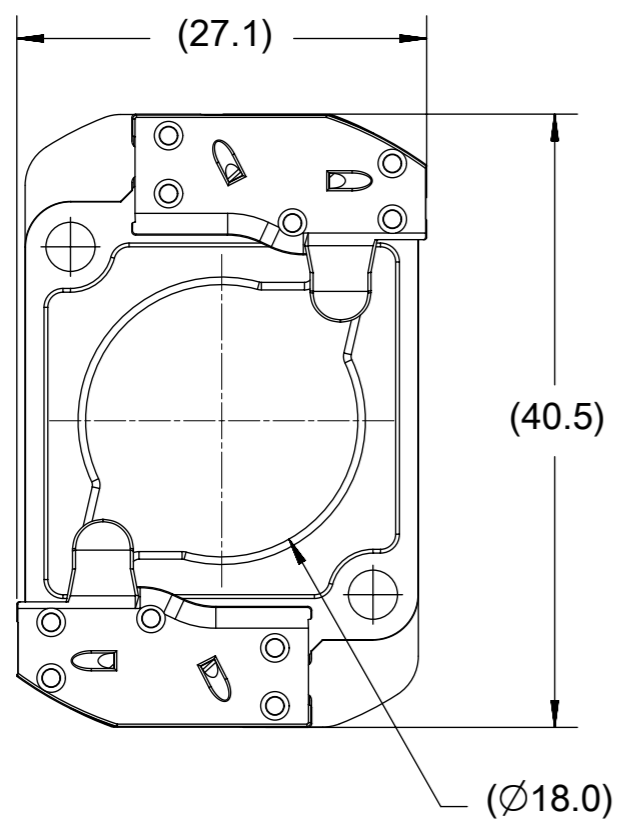


ISOMETRIC VIEW 1
SCALE 1:1

- NOTES:
1. MATERIALS: HOUSING: SEE CHART; TERMINAL: COPPER ALLOY
 2. FINISHES: TERMINAL: NICKEL (Ni) UNDERPLATE 1.27 µm, SELECT TIN (Sn) 2.54µm, SELECT GOLD (Au) 0.76µm
 3. PRODUCT SPECIFICATION: PS-180414-001
 4. PACKAGING SPECIFICATION: PK-180419-006
 5. APPLICATION SPECIFICATION: AS-180412-001
 6. SEE SHEET 3 FOR APPLICATION NOTES
 7. ELV AND ROHS COMPLIANT
 8. ALL DIMENSIONS IN PARENTHESIS (XX.XX) ARE FOR REFERENCE ONLY.

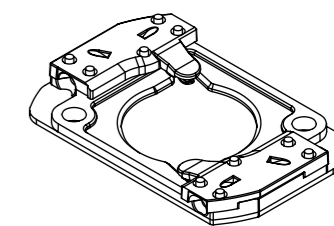
THIS DRAWING CONTAINS INFORMATION THAT IS PROPRIETARY TO MOLEX ELECTRONIC TECHNOLOGIES, LLC AND SHOULD NOT BE USED WITHOUT WRITTEN PERMISSION		CURRENT REV DESC: OBSOLETE PART NO.		molex	
DIMENSION UNITS	SCALE	EC NO: 632260			
mm	1:1	DRWN: RPRABHUM 2020/01/31		PRODUCT CUSTOMER DRAWING	
GENERAL TOLERANCES (UNLESS SPECIFIED)		CHK'D: GGA 2020/02/28		DOCUMENT NUMBER	
ANGULAR TOL	± 0.5°	APPR: GGA 2020/02/28		SD-180414-103	
4 PLACES	±	INITIAL REVISION:		DOC TYPE	DOC PART
3 PLACES	±	DRWN: MCOLE 2012/05/24		PSD	001
2 PLACES	± 0.13	APPR: DMCGOWAN 2012/08/06		REVISION	B5
1 PLACE	± 0.25	DRAFT WHERE APPLICABLE MUST REMAIN WITHIN DIMENSIONS		SHEET NUMBER	
0 PLACES	±	THIRD ANGLE PROJECTION	DRAWING	SERIES	MATERIAL NUMBER
			A3-SIZE	180414	CUSTOMER
				GENERAL MARKET	1 OF 4

HOLDER ASSEMBLY WITH TAB CAP
P/N 180414-0213



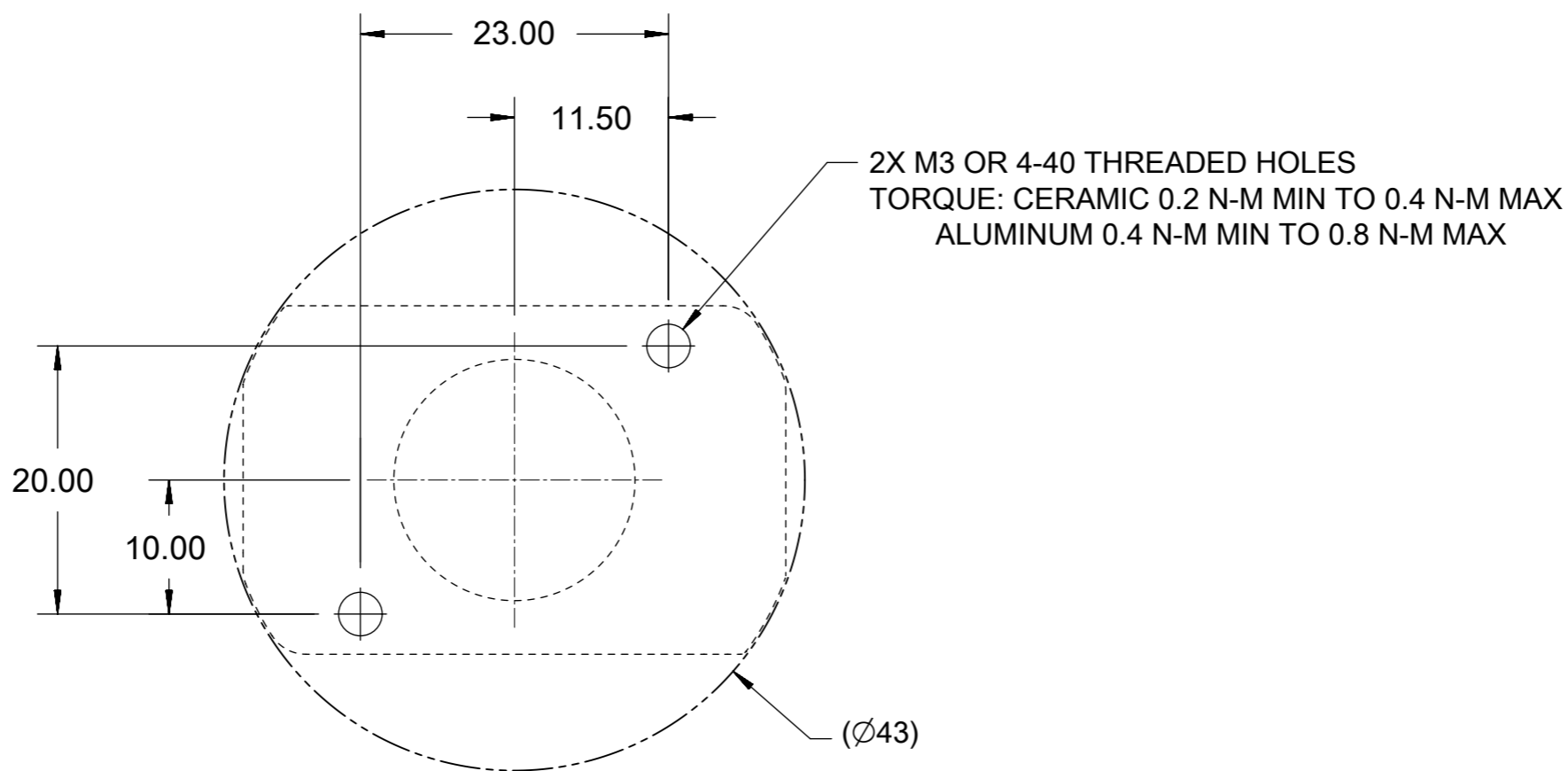
PART MARKED WITH
DATE CODE (YYWWD)
MFG PLANT (CD)
REVISION (X)
PART NUMBER (180414-02X3)

YYWWD CD X
180414-02X3



ISOMETRIC VIEW 2
SCALE 1:1

THIS DRAWING CONTAINS INFORMATION THAT IS PROPRIETARY TO MOLEX ELECTRONIC TECHNOLOGIES, LLC AND SHOULD NOT BE USED WITHOUT WRITTEN PERMISSION									
DIMENSION UNITS mm		SCALE 1:1		CURRENT REV DESC: OBSOLETE PART NO.				molex	
GENERAL TOLERANCES (UNLESS SPECIFIED)				EC NO: 632260					
ANGULAR TOL ± 0.5°		4 PLACES ±		DRWN: RPRABHUM 2020/01/31		COB LED HOLDER		19.0 MM X 19.0 MM SQUARE	
3 PLACES ±		2 PLACES ± 0.13		CHK'D: GGA 2020/02/28		PRODUCT CUSTOMER DRAWING			
1 PLACE ± 0.25		0 PLACES ±		APPR: GGA 2020/02/28		INITIAL REVISION:		DOCUMENT NUMBER	
DRAFT WHERE APPLICABLE MUST REMAIN WITHIN DIMENSIONS		THIRD ANGLE PROJECTION		DRAWING		SERIES		MATERIAL NUMBER	
				A3-SIZE		180414		CUSTOMER	
								GENERAL MARKET	
								SHEET NUMBER	
								2 OF 4	



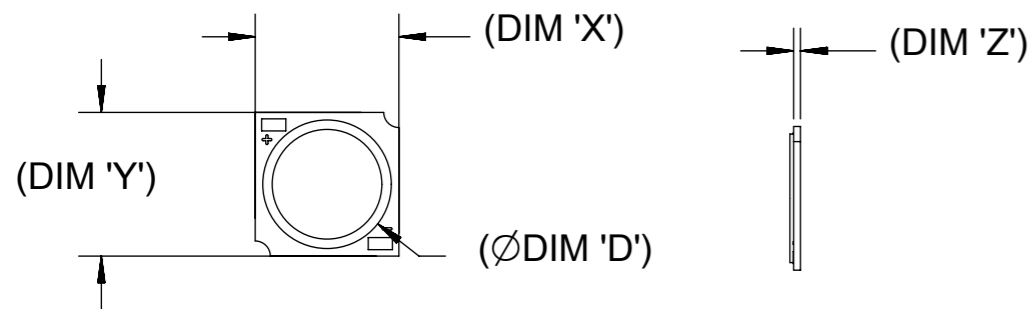
RECOMMENDED MOUNTING DIMENSIONIS

NOTES:

1. WIRE GAUGE: 18, 20, OR 22 AWG, SOLID OR STRANDED WITH TIN OVERCOAT. STRIP LENGTH 10MM +2.0/-0.0MM. RECOMMENDED MAXIMUM DIAMETER AFTER TINNING: 1.40MM. LARGER DIAMETER WIRES ARE ACCEPTABLE IF FULLY INSERTABLE IN WIRE TRAP AND NO WITHDRAWAL WITHIN 20N FORCE.

THIS DRAWING CONTAINS INFORMATION THAT IS PROPRIETARY TO MOLEX ELECTRONIC TECHNOLOGIES, LLC AND SHOULD NOT BE USED WITHOUT WRITTEN PERMISSION										
DIMENSION UNITS	SCALE	CURRENT REV DESC: OBSOLETE PART NO.								
mm	1:1									
GENERAL TOLERANCES (UNLESS SPECIFIED)		EC NO: 632260			COB LED HOLDER					
ANGULAR TOL	± 0.5°	DRWN: RPRABHUM 2020/01/31			19.0 MM X 19.0 MM SQUARE					
4 PLACES	±	CHK'D: GGA 2020/02/28			PRODUCT CUSTOMER DRAWING					
3 PLACES	±	APPR: GGA 2020/02/28			DOCUMENT NUMBER					
2 PLACES	± 0.13	INITIAL REVISION:			SD-180414-103			DOC TYPE	DOC PART	REVISION
1 PLACE	± 0.25	DRWN: MCOLE 2012/05/24						PSD	001	B5
0 PLACES	±	APPR: DMCGOWAN 2012/08/06								
DRAFT WHERE APPLICABLE MUST REMAIN WITHIN DIMENSIONS		THIRD ANGLE PROJECTION	DRAWING	SERIES	MATERIAL NUMBER	CUSTOMER	SHEET NUMBER			
			A3-SIZE	180414		GENERAL MARKET	3 OF 4			

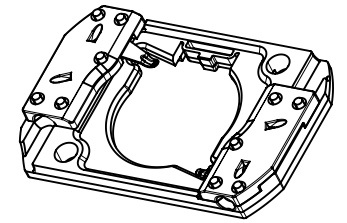
COB MFG	TYPE	DIM 'X'	DIM 'Y'	DIM 'Z'	DIM 'D'
CITIZEN	CLL030, CLL032, CLU034, CLU036, CLU038	19.0	19.0	0.90	17.0
TRIDONIC	SLE G5 LES15	19.0	19.0	0.90	15.0
SEOUL	ZC12, ZC18	19.0	19.0	0.90	16.0
CITIZEN	CLU720, CLU721	19.0	19.0	0.90	13.5
EVERLIGHT	EAHP1919WA*, EAHP1919WB*, EAHP1919WC*	19.0	19.0	0.90	15.5
EVERLIGHT	EA1919 36V/16W	19.0	19.0	0.90	15.5
EVERLIGHT	EA1919 36V/19W	19.0	19.0	0.90	15.5
EVERLIGHT	EA1919 36V/26W	19.0	19.0	0.90	15.5
VOSSLOH-SCHWABE	DMC114C	19.0	19.0	1.00	11.9
VOSSLOH-SCHWABE	DMC124***F, DMC125***F	19.0	19.0	1.00	13.1
VOSSLOH-SCHWABE	DMC125C	19.0	19.0	1.00	13.1
VOSSLOH-SCHWABE	DMC128***F	19.0	19.0	1.00	15.8
BRIDGELUX	H15	19.0	19.0	1.10	16.5
BRIDGELUX	GEN. 7 V13	19.0	19.0	1.00	15.0



COB LED
SCALE 1:1

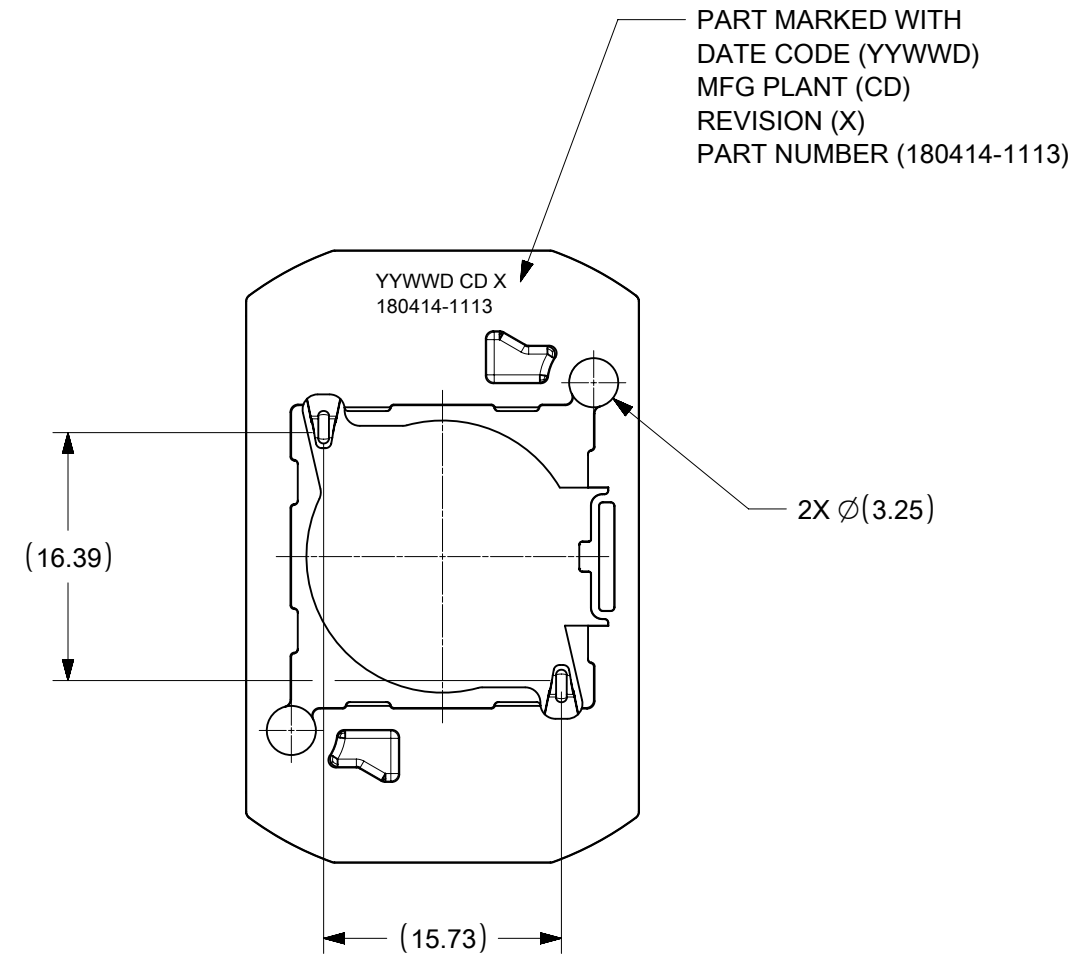
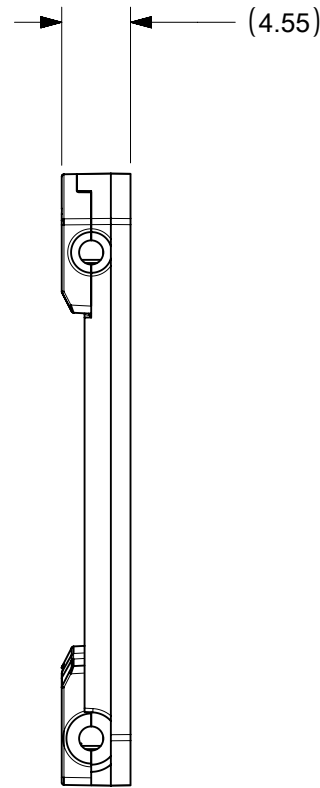
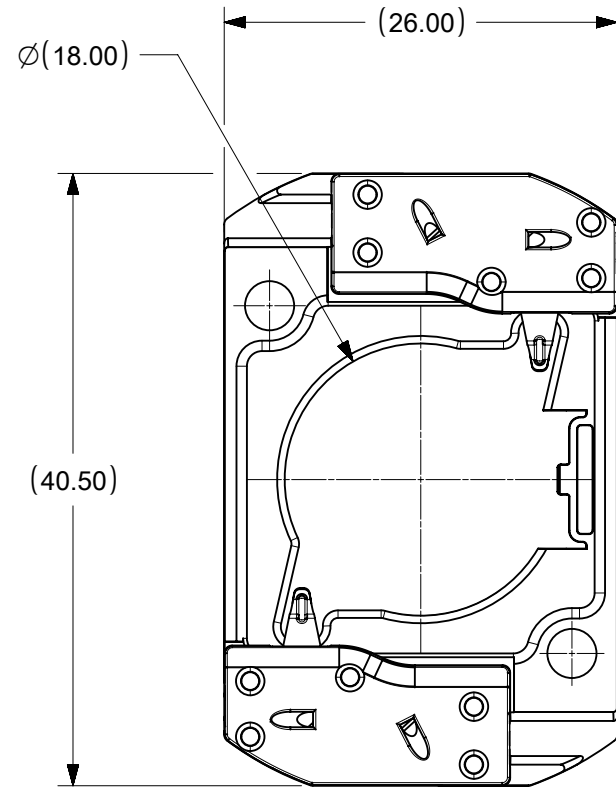
THIS DRAWING CONTAINS INFORMATION THAT IS PROPRIETARY TO MOLEX ELECTRONIC TECHNOLOGIES, LLC AND SHOULD NOT BE USED WITHOUT WRITTEN PERMISSION									
DIMENSION UNITS	SCALE	CURRENT REV DESC: OBSOLETE PART NO.							
mm	1:1								
GENERAL TOLERANCES (UNLESS SPECIFIED)									
ANGULAR TOL	± 0.5°	EC NO:	632260	COB LED HOLDER					
4 PLACES	±	DRWN:	RPRABHUM	2020/01/31	19.0 MM X 19.0 MM SQUARE				
3 PLACES	±	CHK'D:	GGA	2020/02/28	PRODUCT CUSTOMER DRAWING				
2 PLACES	± 0.13	APPR:	GGA	2020/02/28	INITIAL REVISION:				
1 PLACE	± 0.25	DRWN:	MCOLE	2012/05/24	DOCUMENT NUMBER	DOC TYPE	DOC PART	REVISION	
0 PLACES	±	APPR:	DMCGOWAN	2012/08/06	SD-180414-103	PSD	001	B5	
DRAFT WHERE APPLICABLE MUST REMAIN WITHIN DIMENSIONS	THIRD ANGLE PROJECTION	DRAWING	SERIES	MATERIAL NUMBER	CUSTOMER	SHEET NUMBER			
		A3-SIZE	180414		GENERAL MARKET	4 OF 4			

PART NUMBER	DESCRIPTION	POCKET DEPTH	HOUSING	TERMINAL	CAP
180414-1113	COB LED HOLDER ASSEMBLY	0.90	180413-1113	180155-0133	180154-0105



ISO VIEW A
SCALE 1:1

P/N 180414-1113 HOLDER ASSEMBLY (0.90 POCKET DEPTH)

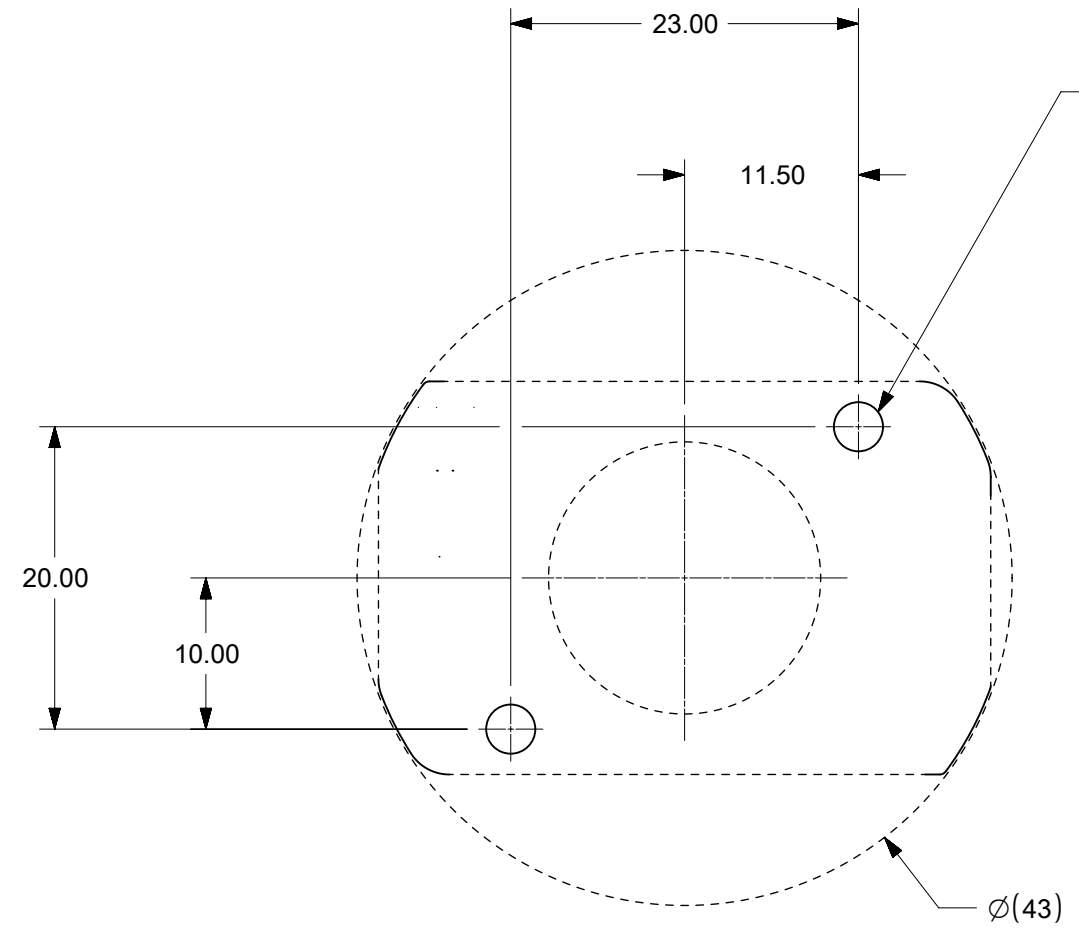


NOTES:

1. MATERIALS: HOUSING AND CAPS: POLYESTER PBT GLASS FILLED; COLOR: WHITE; TERMINAL: COPPER ALLOY
2. FINISHES: TERMINAL CONTACT: SELECT GOLD OVER NICKEL
WIRE TRAP: SELECT TIN OVER NICKEL
3. PRODUCT SPECIFICATION: 180414-0000-PS
4. PACKAGING SPECIFICATION: PK-180419-006
5. UL:OLFB2 UL496 FILE NO. E345583
6. ELV AND ROHS COMPLIANT
7. FOR USE WITH: 19.0 MM X 19.0 MM COB LED
8. WIRE GAUGE: 18, 20, AND 22 AWG, SOLID OR STRANDED WITH TIN OVERCOAT. STRIP LENGTH 10MM +2.0/-0.0MM.
9. ALL DIMENSIONS IN PARENTHESES (XX.XX) ARE FOR REFERENCE ONLY

THIS DRAWING CONTAINS INFORMATION THAT IS PROPRIETARY TO MOLEX ELECTRONIC TECHNOLOGIES, LLC AND SHOULD NOT BE USED WITHOUT WRITTEN PERMISSION									
DIMENSION UNITS		SCALE		CURRENT REV DESC: OBSOLETE PART NO.					
mm		2:1		<p>molex</p> <p>COB LED HOLDER ASSEMBLY 19.0 MM X 19.0 MM SQUARE</p> <p>PRODUCT CUSTOMER DRAWING</p> <p>DOCUMENT NUMBER: SD-180414-113 DOC TYPE: PSD DOC PART: 001 REVISION: B5</p> <p>MATERIAL NUMBER: SEE CHART CUSTOMER: GENERAL MARKET SHEET NUMBER: 1 OF 4</p>					
GENERAL TOLERANCES (UNLESS SPECIFIED)									
	MM		INCH						
4 PLACES	±		±						
3 PLACES	±		±						
2 PLACES	± 0.13		±						
1 PLACE	± 0.25		±						
0 PLACES	±		±						
ANGULAR TOL ± 0.5°				EC NO: 632260		2020/01/31			
DRAFT WHERE APPLICABLE MUST REMAIN WITHIN DIMENSIONS				THIRD ANGLE PROJECTION		DRAWING		SERIES	
				B-SIZE		180414			
DRWN: MCOLE		2013/12/09		DRWN: RPRABHUM		2020/01/31			
APPR: DMCGOWAN		2013/12/09		CHK'D: GGA		2020/02/28			
				APPR: GGA		2020/02/28			

DOCUMENT STATUS	P1	RELEASE DATE	2020/02/28	02:41:30
-----------------	----	--------------	------------	----------



2X M3 OR 4-40 THREADED HOLES
 TORQUE: CERAMIC 0.2 N-M MIN TO 0.4 N-M MAX
 ALUMINUM 0.4 N-M MIN TO 0.8 N-M MAX

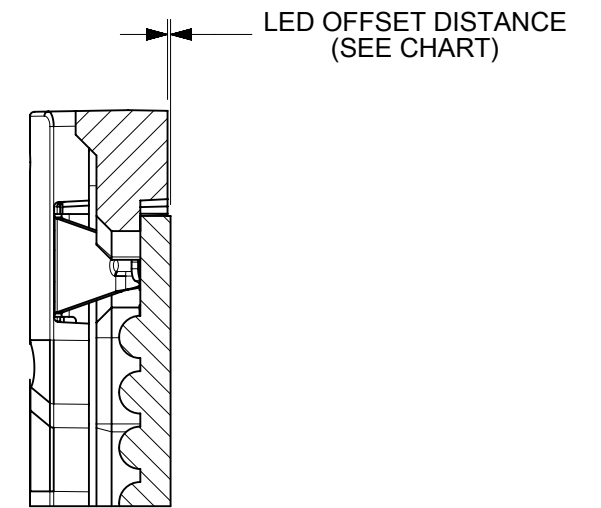
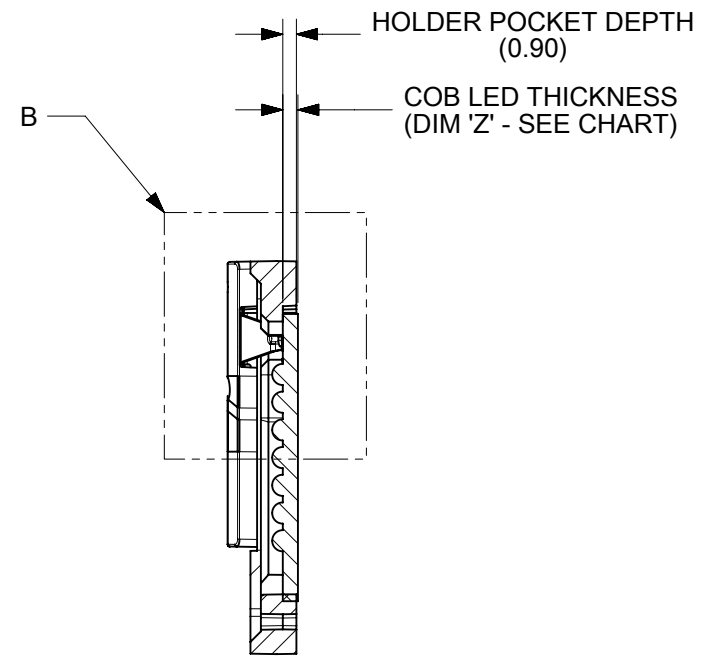
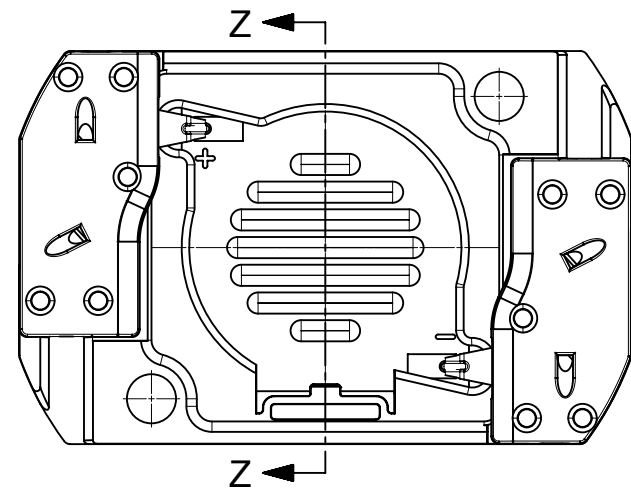
Ø(43)

RECOMMENDED MOUNTING DIMENSIONIS

THIS DRAWING CONTAINS INFORMATION THAT IS PROPRIETARY TO MOLEX ELECTRONIC TECHNOLOGIES, LLC AND SHOULD NOT BE USED WITHOUT WRITTEN PERMISSION									
DIMENSION UNITS		SCALE		CURRENT REV DESC: OBSOLETED PART NO.				molex	
mm		2:1							
GENERAL TOLERANCES (UNLESS SPECIFIED)				EC NO: 632260		2020/01/31		COB LED HOLDER ASSEMBLY 19.0 MM X 19.0 MM SQUARE	
				DRWN: RPRABHUM		2020/02/28			
				CHK'D: GGA		2020/02/28		PRODUCT CUSTOMER DRAWING	
				APPR: GGA		2020/02/28			
				INITIAL REVISION:				DOCUMENT NUMBER	
				DRWN: MCOLE		2013/12/09			
				APPR: DMCGOWAN		2013/12/09		SD-180414-113	
ANGULAR TOL ± 0.5°				THIRD ANGLE PROJECTION		DRAWING		SERIES	
DRAFT WHERE APPLICABLE MUST REMAIN WITHIN DIMENSIONS				THIRD ANGLE PROJECTION		DRAWING		SERIES	
DOCUMENT STATUS		P1		RELEASE DATE		2020/02/28 02:41:30		MATERIAL NUMBER	
9		8		7		6		SEE CHART	
								CUSTOMER	
								GENERAL MARKET	
								SHEET NUMBER	
								2 OF 4	

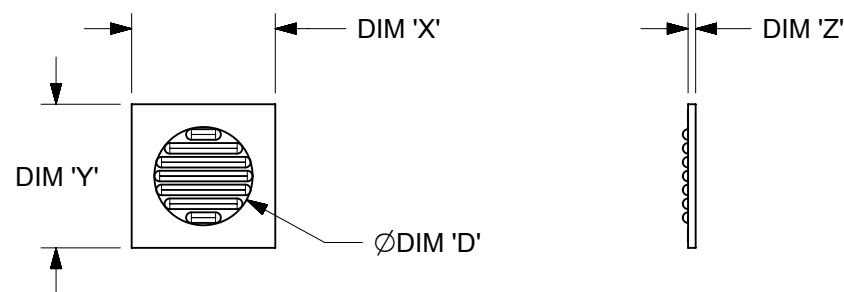
COB MFG	TYPE	DIM 'X'	DIM 'Y'	DIM 'Z'	DIM 'D'	OFFSET
VOSSLOH-SCHWABE	DMC114C	19.0	19.0	1.0	11.9	0.10
VOSSLOH-SCHWABE	DMC124***F, DMC125***F	19.0	19.0	1.0	13.1	0.10
VOSSLOH-SCHWABE	DMC125C	19.0	19.0	1.0	13.1	0.10
VOSSLOH-SCHWABE	DMC128***F	19.0	19.0	1.0	15.8	0.10

ILLUSTRATION OF P/N 180414-1113 HOLDER MATED WITH LED



SECTION Z-Z

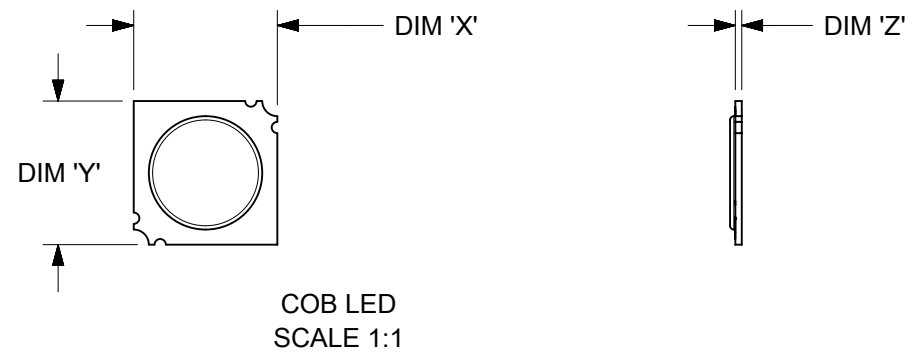
DETAIL B
SCALE 4:1



COB LED
SCALE 1:1

THIS DRAWING CONTAINS INFORMATION THAT IS PROPRIETARY TO MOLEX ELECTRONIC TECHNOLOGIES, LLC AND SHOULD NOT BE USED WITHOUT WRITTEN PERMISSION												
DIMENSION UNITS		SCALE		CURRENT REV DESC: OBSOLETE PART NO.								
mm		2:1		<p>molex</p> <p>COB LED HOLDER ASSEMBLY 19.0 MM X 19.0 MM SQUARE</p> <p>PRODUCT CUSTOMER DRAWING</p>								
GENERAL TOLERANCES (UNLESS SPECIFIED)												
	MM	INCH										
4 PLACES	±		±									
3 PLACES	±		±									
2 PLACES	± 0.13		±									
1 PLACE	± 0.25		±	EC NO: 632260 DRWN: RPRABHUM 2020/01/31 CHK'D: GGA 2020/02/28 APPR: GGA 2020/02/28		DOCUMENT NUMBER SD-180414-113		DOC TYPE	DOC PART	REVISION		
0 PLACES	±		±	INITIAL REVISION: DRWN: MCOLE 2013/12/09 APPR: DMCGOWAN 2013/12/09		PSD	001	B5				
ANGULAR TOL ± 0.5°				DRAFT WHERE APPLICABLE MUST REMAIN WITHIN DIMENSIONS		THIRD ANGLE PROJECTION 		DRAWING	SERIES	MATERIAL NUMBER	CUSTOMER	SHEET NUMBER
				B-SIZE		180414		SEE CHART		GENERAL MARKET		3 OF 4

COB MFG	TYPE	DIM 'X'	DIM 'Y'	DIM 'Z'	DIM 'D'	OFFSET
CITIZEN	CLL030, CLL032, CLU034, CLU036, CLU038	19.0	19.0	0.90	17.0	0.15
SEOUL	ZC12, ZC18	19.0	19.0	0.90	16.0	0.15
TRIDONIC	SLE G5 LES15	19.0	19.0	0.90	15.0	0.15
CITIZEN	CLU720, CLU721	19.0	19.0	0.90	13.5	0.15
EVERLIGHT	EAHP1919WA*, EAHP1919WB*, EAHP1919WC*	19.0	19.0	0.90	15.5	0.15
EVERLIGHT	EA1919 36V/16W	19.0	19.0	0.90	15.5	0.15
EVERLIGHT	EA1919 36V/19W	19.0	19.0	0.90	15.5	0.15
EVERLIGHT	EA1919 36V/26W	19.0	19.0	0.90	15.5	0.15
VOSSLOH-SCHWABE	DMC114C	19.0	19.0	1.00	11.9	0.25
VOSSLOH-SCHWABE	DMC124***F, DMC125***F	19.0	19.0	1.00	13.1	0.25
VOSSLOH-SCHWABE	DMC125C	19.0	19.0	1.00	13.1	0.25
VOSSLOH-SCHWABE	DMC128***F	19.0	19.0	1.00	15.8	0.25
BRIDGELUX	H15	19.0	19.0	1.00	16.5	0.35



THIS DRAWING CONTAINS INFORMATION THAT IS PROPRIETARY TO MOLEX ELECTRONIC TECHNOLOGIES, LLC AND SHOULD NOT BE USED WITHOUT WRITTEN PERMISSION									
DIMENSION UNITS		SCALE		CURRENT REV DESC: OBSOLETE PART NO.				molex	
mm		2:1							
GENERAL TOLERANCES (UNLESS SPECIFIED)				EC NO: 632260		2020/01/31		COB LED HOLDER ASSEMBLY 19.0 MM X 19.0 MM SQUARE	
				DRWN: RPRABHUM		2020/02/28			
				CHK'D: GGA		2020/02/28		PRODUCT CUSTOMER DRAWING	
				APPR: GGA		2020/02/28			
				INITIAL REVISION:				DOCUMENT NUMBER SD-180414-113	
				DRWN: MCOLE		2013/12/09			
				APPR: DMCGOWAN		2013/12/09		DOC TYPE DOC PART REVISION PSD 001 B5	
				ANGULAR TOL ± 0.5°					
DRAFT WHERE APPLICABLE MUST REMAIN WITHIN DIMENSIONS		THIRD ANGLE PROJECTION		DRAWING		SERIES		SHEET NUMBER	
				B-SIZE		180414		4 OF 4	
				MATERIAL NUMBER		CUSTOMER			
				SEE CHART		GENERAL MARKET			