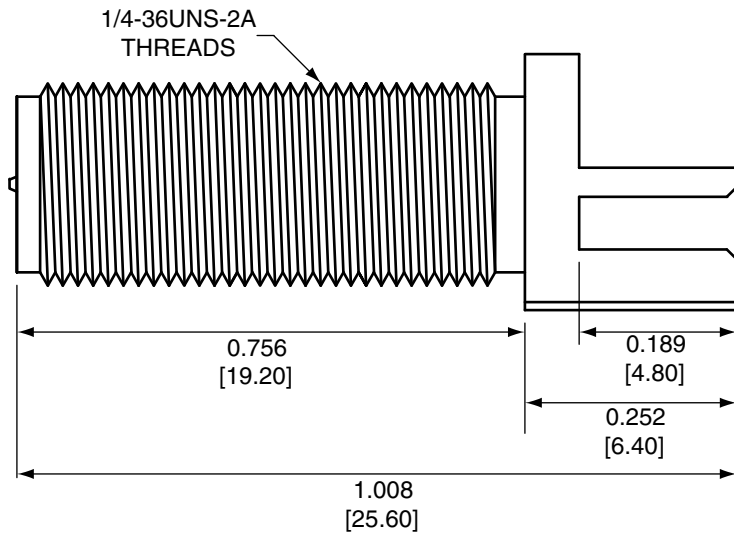
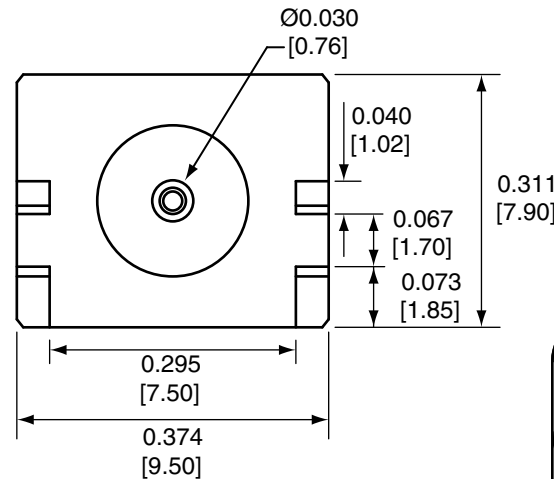


| Description | Material | Finish |
|-------------|----------|--------|
| Body | Brass | Nickel |
| Pin | BE CU | Gold |
| Insulation | PTFE | N/A |
| Washer | Brass | Nickel |
| Nut | Brass | Nickel |

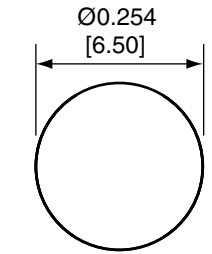
| REVISIONS | | | |
|-----------|---|-----------|------|
| REV | DESCRIPTION | DATE | APPV |
| B | Added new title block; updated footprint dimensions | 13-MAR-12 | BPM |
| C | Updated materials | 10-JUL-12 | SAH |



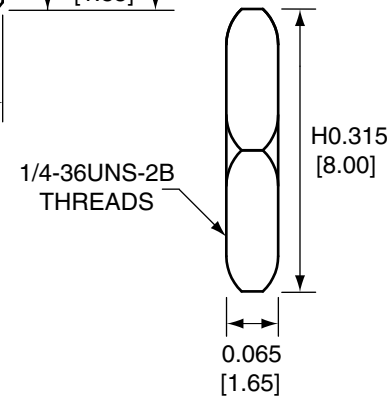
SIDE VIEW



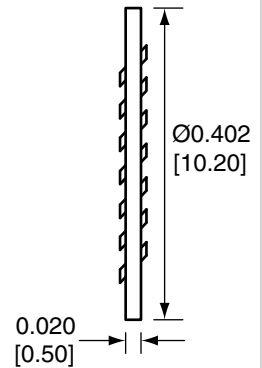
BACK VIEW



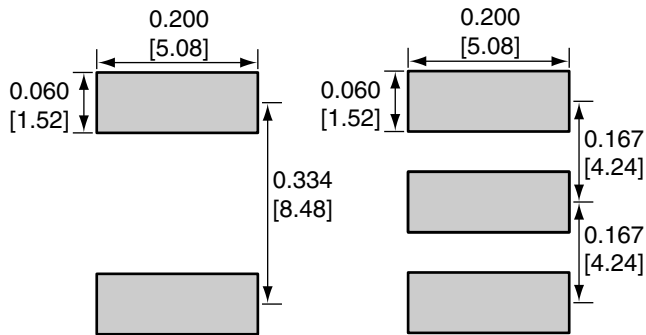
RECOMMENDED MOUNTING HOLE



NUT



WASHER



BOTTOM


TOP

RECOMMENDED FOOTPRINT

NOTES: (UNLESS OTHERWISE SPECIFIED)

1. ALL DIMENSIONS ARE IN INCHES [mm].
2. DIMENSIONS APPLY AFTER FINISHING.
3. MANUFACTURE TO BE COMPLIANT WITH EU RoHS DIRECTIVE.
4. SAFETY BREAK ALL SHARP CORNERS AND EDGES .02 MAXIMUM.

WARNING: THIS DRAWING CONTAINS PROPRIETARY INFORMATION THAT IS THE SOLE PROPERTY OF LINX TECHNOLOGIES, AND SHALL BE TREATED AS SUCH. NO DISCLOSURE OR REPRODUCTION OF THIS DOCUMENT IS PERMITTED, IN WHOLE OR IN PART, WITHOUT THE EXPRESS WRITTEN PERMISSION OF LINX TECHNOLOGIES OR ITS DESIGNATED AGENTS.

| | | |
|-----------|--|---|
| MATERIAL: | TOLERANCES: .020 [0.50]-.200 [5.00]= ±.008 [0.20] .200 [5.00]-1.200 [30.00]= ±.016 [0.40] 1.20 [30.0]-4.75 [120.0]= ±.024 [0.60] 4.75 [120.0]-12.40 [315.0]= ±.040 [1.0] | PROJECTION:  ANGLES: ±1° |
| FINISH: | DRAWN: B.MURPHY ENGR: S.HOGAN | DT: 13-MAR-12 DT: 13-MAR-12 |

Linx

159 ORT LANE
MERLIN, OR 97532

TITLE: RP-SMA FEMALE EDGE MOUNT
FOR 0.062" THICK BOARD, EXTENDED

| | | |
|------------------|---------------------------------|-----------------|
| SIZE A | DWG. NO. CONREV SMA003.062-L | REV C |
| SCALE: 2:1 | DO NOT SCALE DRAWING | SHEET 1 OF 1 |

Mouser Electronics

Authorized Distributor

Click to View Pricing, Inventory, Delivery & Lifecycle Information:

[Linx Technologies:](#)

[CONREVSMA003.062-L](#)