

Bus coupler - FLM BK EIP M12 DI 8 M12-2TX - 2773322

Please be informed that the data shown in this PDF Document is generated from our Online Catalog. Please find the complete data in the user's documentation. Our General Terms of Use for Downloads are valid (<http://phoenixcontact.com/download>)



The EtherNet/IP™ bus coupler opens a local bus for up to 16 devices. Additional functions: 10 Mbps and 100 Mbps, auto negotiation, auto crossover, 8 digital inputs, channel-specific diagnostics, short-circuit/overload protection, M12 fast connection technology.

Product Features

- EtherNet/IP™
- 8 inputs, 24 V DC
- M12 connection technology with SPEEDCON fast locking system



Key Commercial Data

Packing unit	1 pc
Weight per Piece (excluding packing)	341.0 g
Custom tariff number	85176200
Country of origin	Germany

Technical data

Note

Utilization restriction	EMC: class A product, see manufacturer's declaration in the download area
-------------------------	---

Environmental Product Compliance

REACH SVHC	DEHP 117-81-7
------------	---------------

Dimensions

Width	70 mm
Height	178 mm
Depth	50 mm
Drill hole spacing	178 mm

Ambient conditions

Bus coupler - FLM BK EIP M12 DI 8 M12-2TX - 2773322

Technical data

Ambient conditions

Ambient temperature (operation)	-25 °C ... 60 °C
Ambient temperature (storage/transport)	-25 °C ... 85 °C
Permissible humidity (storage/transport)	95 %
Air pressure (operation)	80 kPa ... 106 kPa (up to 2000 m above sea level)
Air pressure (storage/transport)	70 kPa ... 106 kPa (up to 3000 m above sea level)
Degree of protection	IP65/IP67

General

Mounting type	Wall mounting
Net weight	280 g
Mounting type	Wall mounting, optionally on mounting plate

Interfaces

Fieldbus system	EtherNet/IP™
Designation	EtherNet/IP™
Connection method	M12 connectors, D-coded
Designation connection point	Copper cable
Transmission speed	10/100 MBit/s (auto negotiation)
Number of positions	4

Local bus gateway

Designation	Local bus gateway
Connection method	M12 connector, B-coded
Transmission speed	500 kbaud/2 Mbaud, can be selected
Max. number of local bus devices	16
Max. length of local bus	20 m

Power supply for module electronics

Connection method	M12 connector
Designation	U _L
Supply voltage	24 V DC
Supply voltage range	18 V DC ... 30 V DC (including ripple)
Supply current	< 100 mA

Fieldline potentials

Voltage supply U _L	24 V DC
Power supply at U _L	max. 4 A
Current consumption from U _L	max. 118 mA (At 2 Mbaud)
	typ. 118 mA (At 2 Mbaud)
	max. 60 mA (At 500 kBaud)

Bus coupler - FLM BK EIP M12 DI 8 M12-2TX - 2773322

Technical data

Fieldline potentials

	typ. 60 mA (At 500 kBaud)
Voltage supply U_s	24 V DC
Power supply at U_s	max. 4 A
Current consumption from U_s	typ. 5 mA (plus power supply for sensors)
	max. 600 mA

Digital inputs

Input name	Digital inputs
Connection method	M12 connector
	2, 3, 4-wire
Number of inputs	8 (EN 61131-2 type 1)
Protective circuit	Short-circuit protection, overload protection of the sensor supply Reverse polarity protection
Filter time	3 ms
Input characteristic curve	IEC 61131-2 type 1
Input voltage	24 V DC
Input voltage range "0" signal	-30 V DC ... 5 V DC
Input voltage range "1" signal	13 V DC ... 30 V DC

Standards and Regulations

Test section	To I/O 500 V DC
Connection in acc. with standard	CUL
Protection class	III, IEC 61140, EN 61140, VDE 0140-1

Classifications

eCl@ss

eCl@ss 4.0	27250203
eCl@ss 4.1	27250203
eCl@ss 5.0	27250203
eCl@ss 5.1	27242608
eCl@ss 6.0	27242608
eCl@ss 7.0	27242608
eCl@ss 8.0	27242604
eCl@ss 9.0	27242604

ETIM

ETIM 2.0	EC001434
ETIM 3.0	EC001604

Bus coupler - FLM BK EIP M12 DI 8 M12-2TX - 2773322

Classifications

ETIM

ETIM 4.0	EC001604
ETIM 5.0	EC001599

UNSPSC

UNSPSC 6.01	43172015
UNSPSC 7.0901	43201404
UNSPSC 11	43172015
UNSPSC 12.01	43201404
UNSPSC 13.2	43201404

Approvals

Approvals

Approvals


UL Recognized / cUL Recognized / cULus Recognized

Ex Approvals

UL Recognized / cUL Recognized / cULus Recognized

Approvals submitted

Approval details

UL Recognized 

cUL Recognized 
--

cULus Recognized 
--

Bus coupler - FLM BK EIP M12 DI 8 M12-2TX - 2773322

Accessories

Accessories

Circular connector (cable-side)

Bus system connector - SACC-M12MSD-4CON-PG 7-SH - 1521258



Bus system connector, Ethernet/PROFINET CAT5 (100 Mbps), 4-position, shielded, Plug straight M12, D-coded, Screw connection, Knurl material: Zinc die-cast, nickel-plated, Cable gland Pg7, External cable diameter 4 mm ... 6 mm

Bus system connector - SACC-M12MSD-4CON-PG 9-SH - 1521261



Bus system connector, Ethernet/PROFINET CAT5 (100 Mbps), 4-position, shielded, Plug straight M12, D-coded, Screw connection, Knurl material: Zinc die-cast, nickel-plated, Cable gland Pg9, External cable diameter 6 mm ... 8 mm

Connector - SACC-M12MS-5SC M - 1508187



Connector, 5-position, Plug straight M12, A-coded, Spring-cage connection, Knurl material: Zinc die-cast, nickel-plated, External cable diameter 4 mm ... 8 mm

Connector - SACC-M12FS-5SC M - 1508200



Connector, 5-position, Socket straight M12, A-coded, Spring-cage connection, Knurl material: Zinc die-cast, nickel-plated, External cable diameter 4 mm ... 8 mm

Data cable preassembled

Bus coupler - FLM BK EIP M12 DI 8 M12-2TX - 2773322

Accessories

Bus system cable - SAC-4P-M12MSD/ 2,0-930 - 1524006



Bus system cable, Ethernet CAT5 (100 Mbps), 4-position, PUR halogen-free, water blue RAL 5021, shielded, Plug straight M12, D-coded, on free cable end, Cable length: 2 m

Bus system cable - SAC-4P-M12MSD/ 5,0-930 - 1524019



Bus system cable, Ethernet CAT5 (100 Mbps), 4-position, PUR halogen-free, water blue RAL 5021, shielded, Plug straight M12, D-coded, on free cable end, Cable length: 5 m

Bus system cable - SAC-4P-M12MSD/10,0-930 - 1524022



Bus system cable, Ethernet CAT5 (100 Mbps), 4-position, PUR halogen-free, water blue RAL 5021, shielded, Plug straight M12, D-coded, on free cable end, Cable length: 10 m

Bus system cable - SAC-4P-M12MSD/15,0-930 - 1524035



Bus system cable, Ethernet CAT5 (100 Mbps), 4-position, PUR halogen-free, water blue RAL 5021, shielded, Plug straight M12, D-coded, on free cable end, Cable length: 15 m

Bus system cable - SAC-4P-M12MSD/ 2,0-930/M12MSD - 1521533



Bus system cable, Ethernet CAT5 (100 Mbps), 4-position, PUR halogen-free, water blue RAL 5021, shielded, Plug straight M12, D-coded, on Plug straight M12, D-coded, Cable length: 2 m

Bus coupler - FLM BK EIP M12 DI 8 M12-2TX - 2773322

Accessories

Bus system cable - SAC-4P-M12MSD/ 5,0-930/M12MSD - 1524051



Bus system cable, Ethernet CAT5 (100 Mbps), 4-position, PUR halogen-free, water blue RAL 5021, shielded, Plug straight M12, D-coded, on Plug straight M12, D-coded, Cable length: 5 m

Device marking

Zack marker strip - ZBN 18:UNBEDRUCKT - 2809128



Zack marker strip, Strip, white, unlabeled, can be labeled with: Plotter, Mounting type: Snap into tall marker groove, for terminal block width: 18 mm, Lettering field: 18 x 5 mm

Sensor/actuator cable

Sensor/Actuator cable - SAC-5P-MS/ 2,0-186 SCO - 1518326



Sensor/Actuator cable, 5-position, PUR, black-gray RAL 7021, Plug straight M12 SPEEDCON, A-coded, on free cable end, Cable length: 2 m

Sensor/Actuator cable - SAC-5P-MS/ 5,0-186 SCO - 1518339



Sensor/Actuator cable, 5-position, PUR, black-gray RAL 7021, Plug straight M12 SPEEDCON, A-coded, on free cable end, Cable length: 5 m

Sensor/Actuator cable - SAC-5P-MS/10,0-186 SCO - 1518342



Sensor/Actuator cable, 5-position, PUR, black-gray RAL 7021, Plug straight M12 SPEEDCON, A-coded, on free cable end, Cable length: 10 m

Bus coupler - FLM BK EIP M12 DI 8 M12-2TX - 2773322

Accessories

Sensor/Actuator cable - SAC-5P-MS/15,0-186 SCO - 1518355



Sensor/Actuator cable, 5-position, PUR, black-gray RAL 7021, Plug straight M12 SPEEDCON, A-coded, on free cable end, Cable length: 15 m

Sensor/Actuator cable - SAC-5P- 2,0-186/FS SCO - 1518368



Sensor/Actuator cable, 5-position, PUR, black-gray RAL 7021, free cable end, on Socket straight M12 SPEEDCON, A-coded, Cable length: 2 m

Sensor/Actuator cable - SAC-5P- 5,0-186/FS SCO - 1518371



Sensor/Actuator cable, 5-position, PUR, black-gray RAL 7021, free cable end, on Socket straight M12 SPEEDCON, A-coded, Cable length: 5 m

Sensor/Actuator cable - SAC-5P-10,0-186/FS SCO - 1518384



Sensor/Actuator cable, 5-position, PUR, black-gray RAL 7021, free cable end, on Socket straight M12 SPEEDCON, A-coded, Cable length: 10 m

Sensor/Actuator cable - SAC-5P-15,0-186/FS SCO - 1518397



Sensor/Actuator cable, 5-position, PUR, black-gray RAL 7021, free cable end, on Socket straight M12 SPEEDCON, A-coded, Cable length: 15 m

Bus coupler - FLM BK EIP M12 DI 8 M12-2TX - 2773322

Accessories

Sensor/Actuator cable - SAC-5P-MS/ 0,3-186/FS SCO - 1518407



Sensor/Actuator cable, 5-position, PUR, black-gray RAL 7021, Plug straight M12 SPEEDCON, A-coded, on Socket straight M12 SPEEDCON, A-coded, Cable length: 0.3 m

Sensor/Actuator cable - SAC-5P-MS/ 0,5-186/FS SCO - 1518410



Sensor/Actuator cable, 5-position, PUR, black-gray RAL 7021, Plug straight M12 SPEEDCON, A-coded, on Socket straight M12 SPEEDCON, A-coded, Cable length: 0.5 m

Sensor/Actuator cable - SAC-5P-MS/ 1,0-186/FS SCO - 1518423



Sensor/Actuator cable, 5-position, PUR, black-gray RAL 7021, Plug straight M12 SPEEDCON, A-coded, on Socket straight M12 SPEEDCON, A-coded, Cable length: 1 m

Sensor/Actuator cable - SAC-5P-MS/ 2,0-186/FS SCO - 1518436



Sensor/Actuator cable, 5-position, PUR, black-gray RAL 7021, Plug straight M12 SPEEDCON, A-coded, on Socket straight M12 SPEEDCON, A-coded, Cable length: 2 m

Sensor/Actuator cable - SAC-5P-MS/ 5,0-186/FS SCO - 1518449



Sensor/Actuator cable, 5-position, PUR, black-gray RAL 7021, Plug straight M12 SPEEDCON, A-coded, on Socket straight M12 SPEEDCON, A-coded, Cable length: 5 m

Bus coupler - FLM BK EIP M12 DI 8 M12-2TX - 2773322

Accessories

Sensor/Actuator cable - SAC-5P-MS/10,0-186/FS SCO - 1518452



Sensor/Actuator cable, 5-position, PUR, black-gray RAL 7021, Plug straight M12 SPEEDCON, A-coded, on Socket straight M12 SPEEDCON, A-coded, Cable length: 10 m

Sensor/Actuator cable - SAC-5P-MS/15,0-186/FS SCO - 1518465



Sensor/Actuator cable, 5-position, PUR, black-gray RAL 7021, Plug straight M12 SPEEDCON, A-coded, on Socket straight M12 SPEEDCON, A-coded, Cable length: 15 m

Terminal marking

Zack Marker strip, flat - ZBF 12:UNBEDRUCKT - 0809735



Zack Marker strip, flat, Strip, white, unlabeled, can be labeled with: Plotter, Mounting type: Snap into flat marker groove, for terminal block width: 12 mm, Lettering field: 5.15 x 12.15 mm

Network cable - VS-M12MSD-RJ45-931/ 0,5 - 1657562

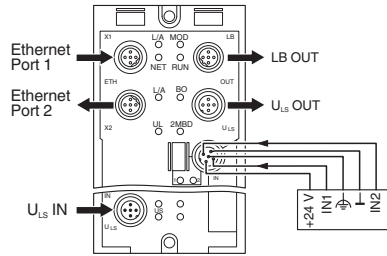


Assembled Ethernet cable, CAT5e, shielded, 2-pair, AWG 26 stranded (7-wire), RAL 5021 (water blue), M12 4-pos. D-coded on RJ45 connector, length: 0.5 m

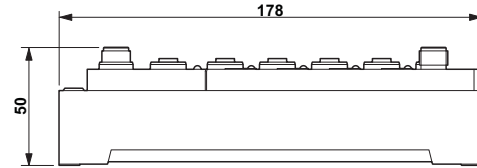
Drawings

Bus coupler - FLM BK EIP M12 DI 8 M12-2TX - 2773322

Connection diagram



Dimensional drawing



Mouser Electronics

Authorized Distributor

Click to View Pricing, Inventory, Delivery & Lifecycle Information:

[Phoenix Contact:](#)

[2773322](#)