

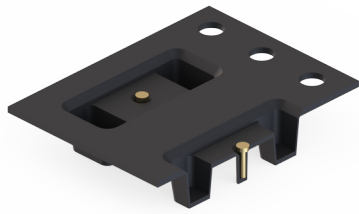
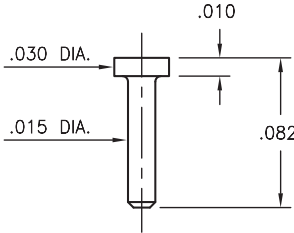
MALE PCB PINS

PINS ON TAPE & REEL PACKAGING

4825

4825-0-57-XX-00-00-33-0

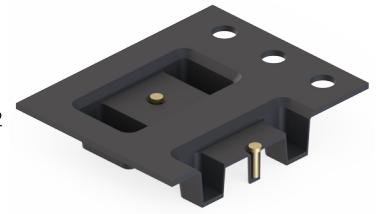
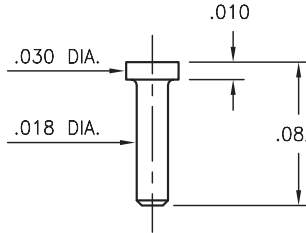
Solder mount in .019 mounting hole
16mm wide X 8mm pitch carrier tape:
3,250 parts per 13" reel.



4288

4288-0-57-XX-00-00-33-0

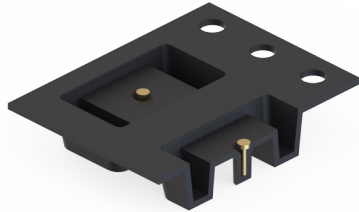
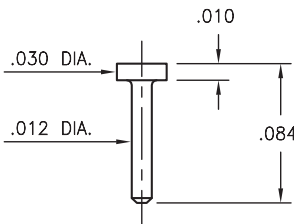
Solder mount in .022 mounting hole
16mm wide X 8mm pitch carrier tape:
3,250 parts per 13" reel.



4353

4353-0-57-XX-00-00-33-0

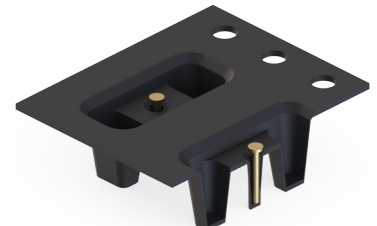
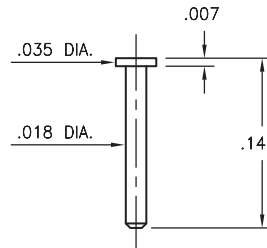
Solder mount in .016 mounting hole
16mm wide X 8mm pitch carrier tape:
3,040 parts per 13" reel.



4068

4068-0-57-XX-00-00-33-0

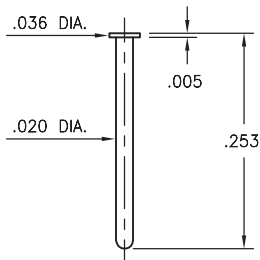
Solder mount in .022 mounting hole
16mm wide X 8mm pitch carrier tape:
2,000 parts per 13" reel.



6547

6547-0-57-XX-00-00-33-0

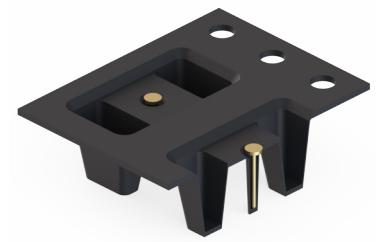
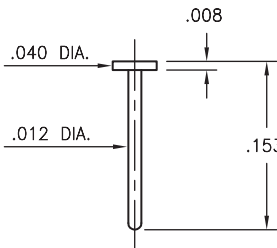
Solder mount in .024 mounting hole
24mm wide X 8mm pitch carrier tape:
1,080 parts per 13" reel.



9083

9083-0-57-XX-00-00-38-0

Solder mount in .016 mounting hole
16mm wide X 8mm pitch carrier tape:
1,950 parts per 13" reel.



SPECIFICATIONS:

Pin Material: Brass Alloy 360, 1/2 Hard
(Except where noted)

Dimensions: Inches

Tolerances On: Lengths: $\pm .005$
Diameters: $\pm .002$
Angles: $\pm 2^\circ$



ORDER CODE: XXXX - X - 00 - XX - 00 - 00 - XX - 0

BASIC PART # →

← **SPECIFY PIN FINISH:**

- 01 200 μ " TIN/LEAD OVER NICKEL
- ◆ 80 200 μ " TIN OVER NICKEL (RoHS)
- ◆ 15 10 μ " GOLD OVER NICKEL (RoHS)
- ◆ 21 20 μ " GOLD OVER NICKEL (RoHS)
- ◆ 34 50 μ " GOLD OVER NICKEL (RoHS)

