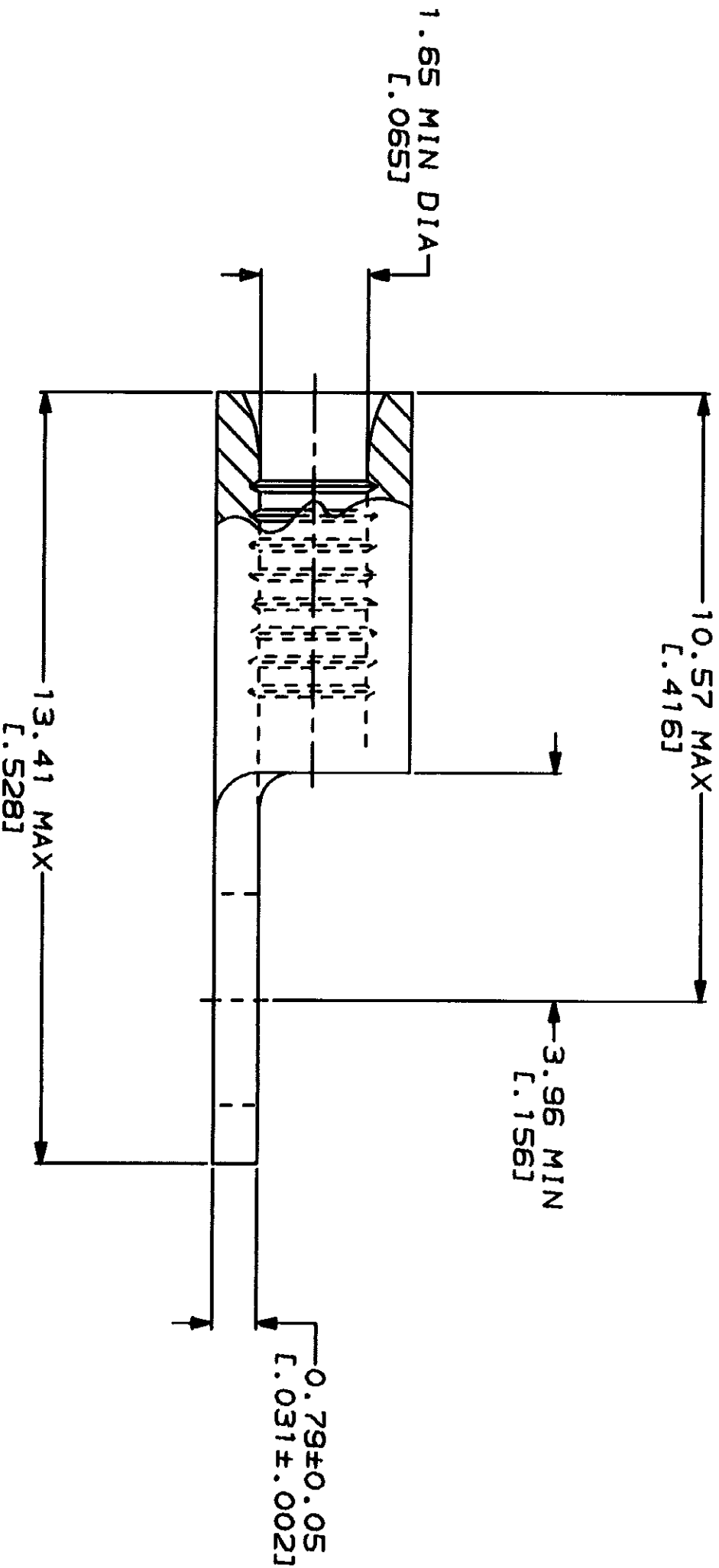
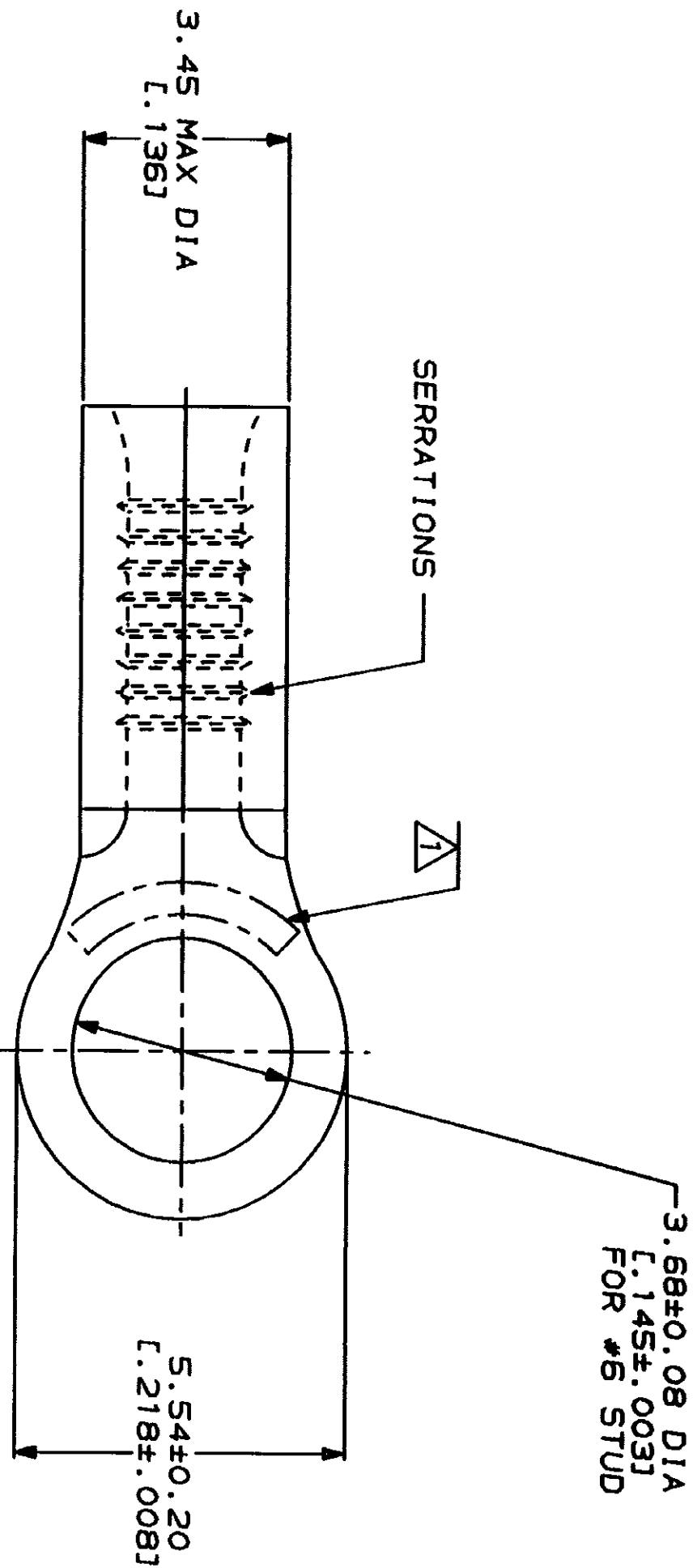
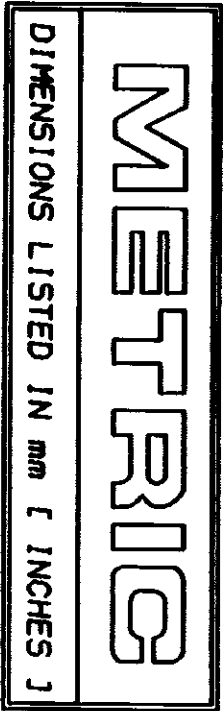


LOC		DIST		REV		REVISIONS		DATE		APPD	
6	14	P	P	ZONE	LTR	DESCRIPTION					
						REVISED PER 0720-0230-93		2/25/94			



AMP WIRE RANGE		UL E13288 Listed	
22-16 AWG STRANDED		22-16 AWG STRANDED	
LR7189 Certified		MILITARY P/N AND CLASS	
NOT CERTIFIED		NOT APPLICABLE	

1 STAMP AMP 22-18* APPROX AS SHOWN
22-16 TERMINALS ARE STAMPED 22-18 IN
ACCORDANCE WITH MILITARY SPECIFICATION
MIL-T-7928, COMMERCIAL WIRE RANGE IS 22-16

AMP INCORPORATED CUSTOMER SERVICE SYSTEMS		MAX RECOMMENDED OPERATING TEMPERATURE: 170°C MAX	
FOR ADDITIONAL PRODUCT INFORMATION OR COPIES OF DRAWINGS AND TECHNICAL DOCUMENTS		VOLTAGE RATING: NOT APPLICABLE	
FOR APPLICATION TOOLING INFORMATION		WIRE CROSS SECTIONAL AREA RANGE: 0.26-1.65mm² [509-3,260] CIR MILS STRANDED	
FOR ORDER ENTRY		THIS DRAWING IS A CONTROLLED DOCUMENT FOR AMP INCORPORATED. IT IS SUBJECT TO CHANGE WITHOUT NOTICE. FOR THE LATEST REVISION, SEE THE AMP WEBSITE.	
PRODUCT INFORMATION CENTER 1-800-522-6752		FINISH TIN PLATE 0.00254 [1.000100] MIN THK PER MIL-T-10727	
TOOLING ASSISTANCE CENTER 1-800-722-1111		DR 2-3-93 TA BRINKMAN	
1-800-526-5142		CHK 2-3-93 DA PATTERSON	
		APPD 2-3-93 DE MILLER	
		APPD 2-3-93 JL NECKLEY	
		PRODUCT SPEC	
		APPLICATION SPEC	
		WEIGHT	
		SCALE 10:1	

AMP
AMP Incorporated
Harrisburg, PA 17125-3508

TERMINAL, RING TONGUE,
BUDGET

31101
PART NO

Mouser Electronics

Authorized Distributor

Click to View Pricing, Inventory, Delivery & Lifecycle Information:

[TE Connectivity:](#)

[31101](#)