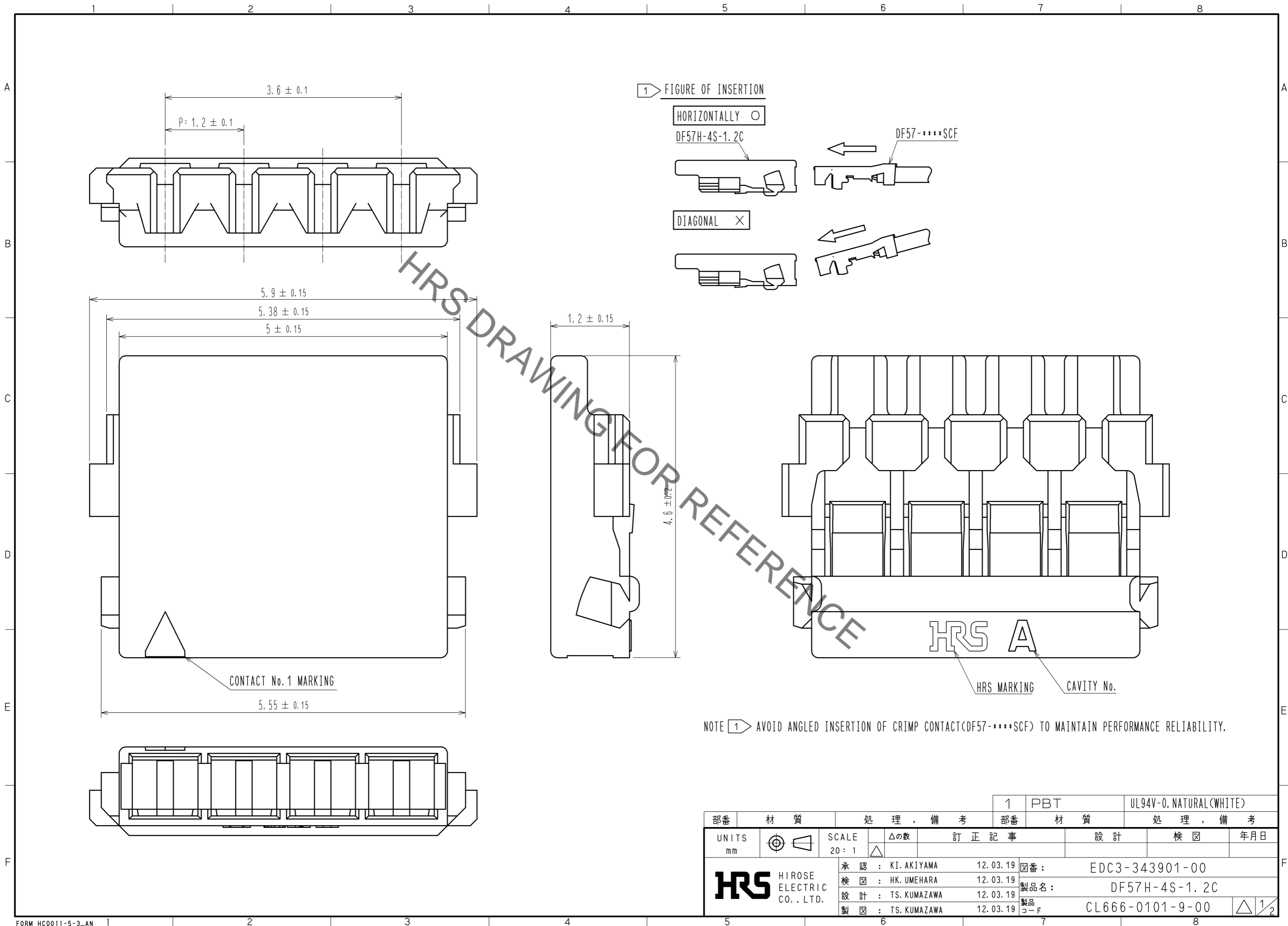


Sep.1.2020 Copyright 2020 HIROSE ELECTRIC CO., LTD. All Rights Reserved.  
In case of consideration for using Automotive equipment / device which demand high reliability, kindly contact our sales window correspondents.



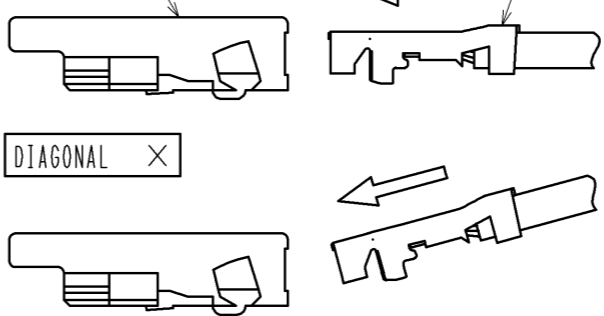
1) FIGURE OF INSERTION

HORIZONTALLY ○

DF57H-4S-1.2C

DIAGONAL ×

DF57-\*\*\*SCF



HRS DRAWING FOR REFERENCE

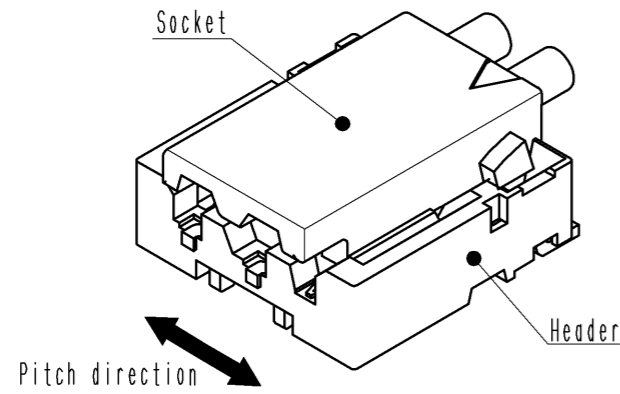
NOTE 1) AVOID ANGLED INSERTION OF CRIMP CONTACT(DF57-\*\*\*SCF) TO MAINTAIN PERFORMANCE RELIABILITY.

部番		材質		処 理 , 備 考		1	PBT	UL94V-0, NATURAL(WHITE)
UNITS mm		SCALE 20:1		△の数		訂 正 記 事		設 計
HRS HIROSE ELECTRIC CO., LTD.		承認 : KI. AKIYAMA 12.03.19		検 査 : HK. UMEHARA 12.03.19		設 計		年 月 日
		設 計 : TS. KUMAZAWA 12.03.19		製 図 : TS. KUMAZAWA 12.03.19		図 番 : EDC3-343901-00		製 品 名 : DF57H-4S-1.2C
						製 品 コード : CL666-0101-9-00		△ 1/2

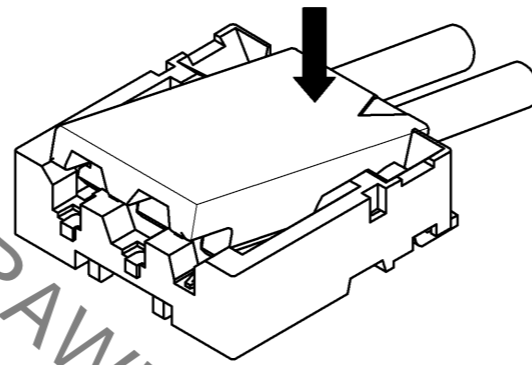
# DF57 Series Mating / Unmating Operation Instruction

## Mating

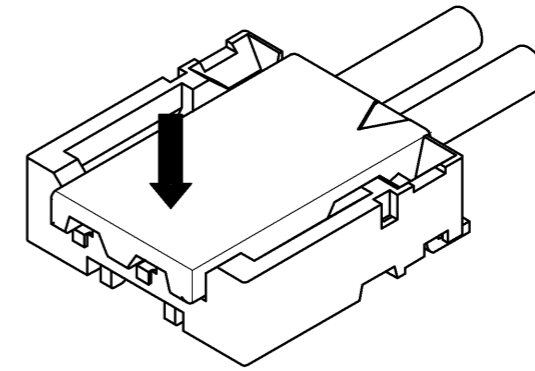
① By positioning the convexity of the socket sides to the header concavity, align the centers of the socket and the header in pitch direction.



② Slightly press the socket down at cable side to tilted angle.

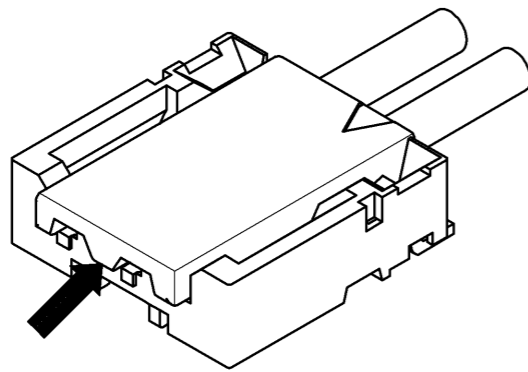


③ Press down at the lever side with stabilizing the cable side to insert. Mating completes.

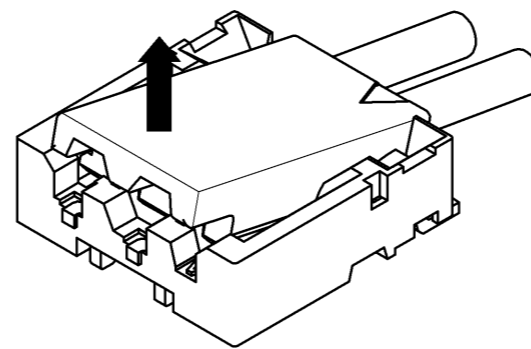


## Unmating

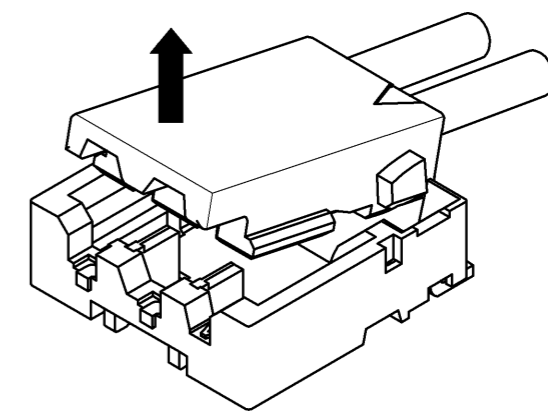
① Hook the lever with finger nail.



② Lift up to the upper direction and friction lock is released.



③ Lift up to the upper direction and positive lock is released. Removal completes.



HRS DRAWING FOR REFERENCE

<b>HRS</b>	DRAWING NO.	EDC3-343901-00
	PART NO.	DF57H-4S-1.2C
	CODE NO.	CL666-0101-9-00
		△ 2/2

Sep.1.2020 Copyright 2020 HIROSE ELECTRIC CO., LTD. All Rights Reserved. In case of consideration for using Automotive equipment / device which demand high reliability, kindly contact our sales window correspondents.