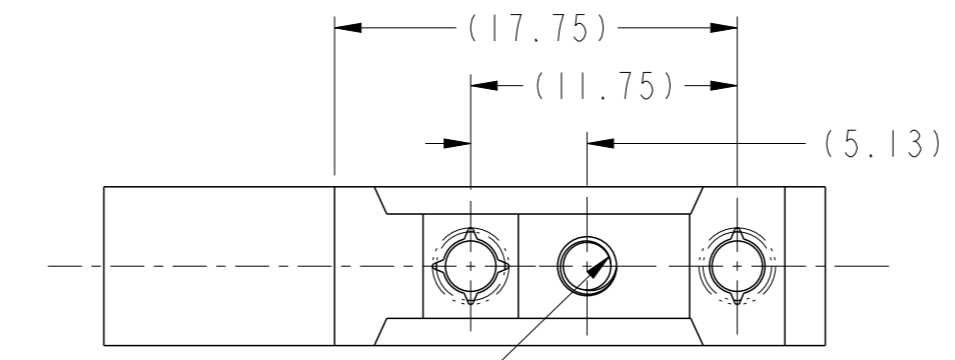
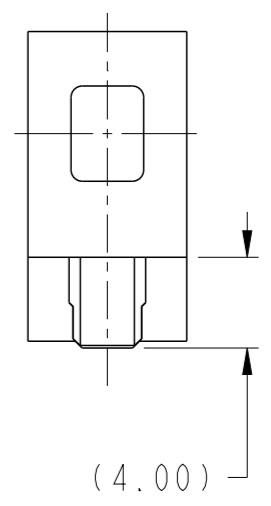
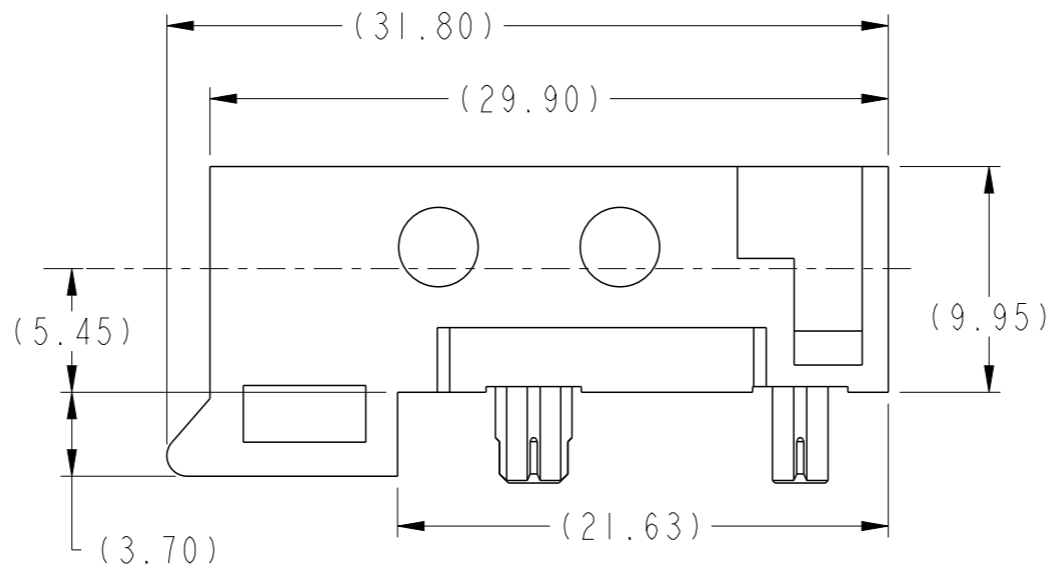
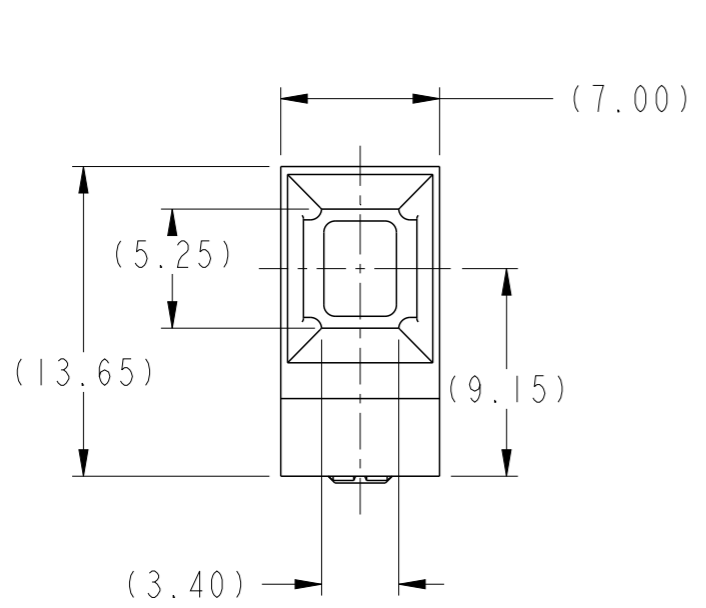


PRODUCT NUMBER
SEE TABLE, SHT 2



M3 x 0.5-6H
x 3.0 DEEP
(0.3 x 45° CHAMFER)

Amphenol
FCi

© 2016 AFCI

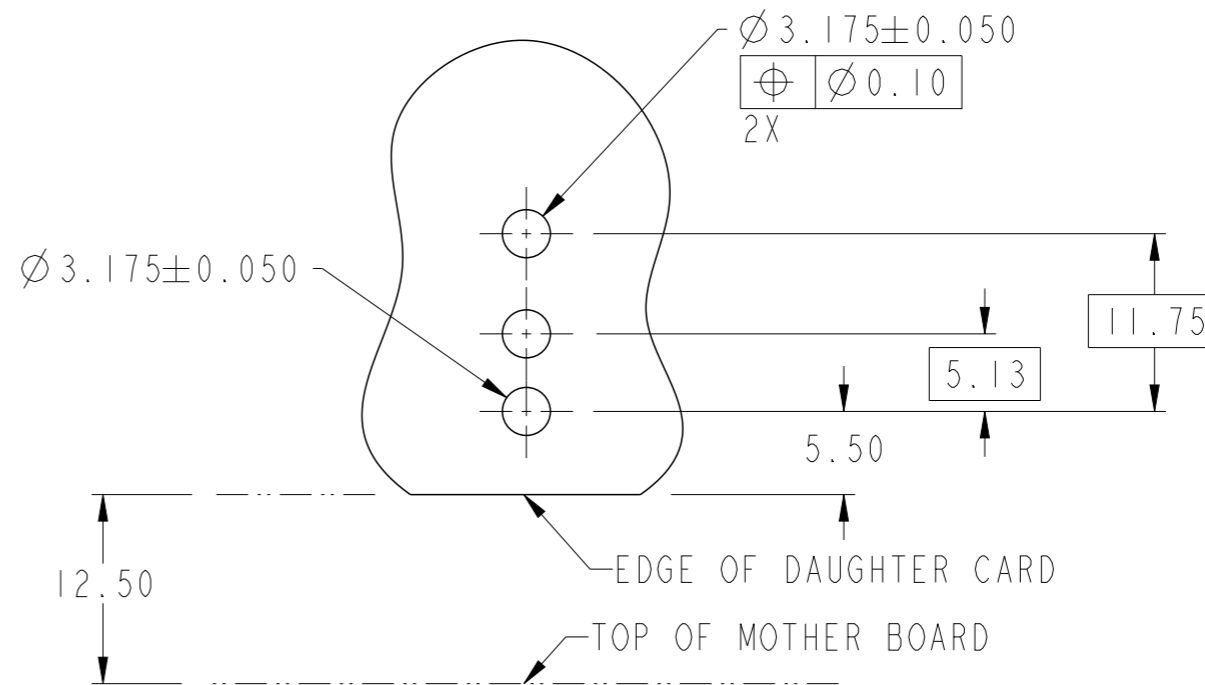
spec ref	-	dr	Chen-Hong Tan	2005/08/18	projection	MM	size	A3	scale	3:1
tolerance std	ASME Y14.5	eng	Terry Luo	2019/04/24			ecn no	ELX-DG-33324-1		
TOLERANCES UNLESS OTHERWISE SPECIFIED		chr	-	-			rel level	Released		
surface	linear	appr	Heaven Cen	2019/04/25	product family	AirMax ACCESSORIES		dwg no	10045367	
	angular	Amphenol FCi		7.2MM R/A GUIDE SOCKET 2/3 PAIR		rev	E			
ASME Y14.5	0.X ±0.3 0.XX ±0.10 0.XXX ±0.050	cat. no.	-		Product - Customer Drw		sheet 1 of 2			

PRODUCT NUMBER

10045367-101LF

NOTES:

- ① MATERIAL: ZINC ALLOY.
- ② FINISH: TRIVALENT CHROMATE IRIDESCENT
- ③ APPLICATION SPECIFICATION: GS-20-045.
- ④ REFER TO CUSTOMER DRAWING 10035911 FOR INFORMATION REGARDING PCB LAYOUT OF POWER AND GUIDE MODULES RELATIVE TO SIGNAL MODULES.
- 5 THIS PRODUCT MEETS EUROPEAN UNION DIRECTIVES AND OTHER COUNTRY REGULATIONS AS DESCRIBED IN GS-22-008.
- 6 PACKAGING MEETS GS-14-920 LEAD FREE LABELING SPECIFICATION.



RECOMMENDED PCB LAYOUT

NOTE 4
SCALE: 2:1

Amphenol
FCi

© 2016 AFCI

spec ref	-	dr	Chen-Hong Tan	2005/08/18	projection	MM	size	A3	scale	1:1
tolerance std	ASME Y14.5	eng	Terry Luo	2019/04/24			ecn no	ELX-DG-33324-1		
TOLERANCES UNLESS OTHERWISE SPECIFIED		chr	-	-			product family	AirMax ACCESSORIES		rel level
surface	linear	appr	Heaven Cen	2019/04/25	7.2MM R/A GUIDE SOCKET			dwg no	10045367	
					2/3 PAIR			rev	E	
ASME Y14.5	angular				cat. no.	-	Product - Customer Drw	sheet 2 of 2		

Mouser Electronics

Authorized Distributor

Click to View Pricing, Inventory, Delivery & Lifecycle Information:

[FCI / Amphenol:](#)

[10045367-101LF](#)