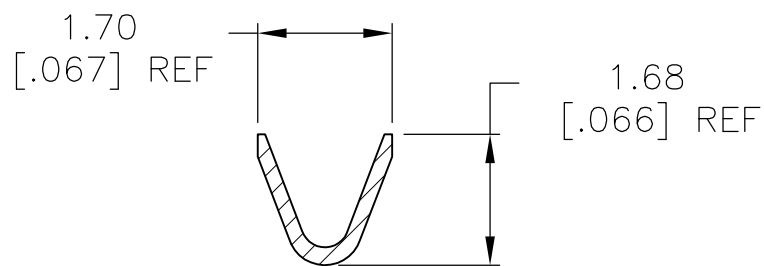
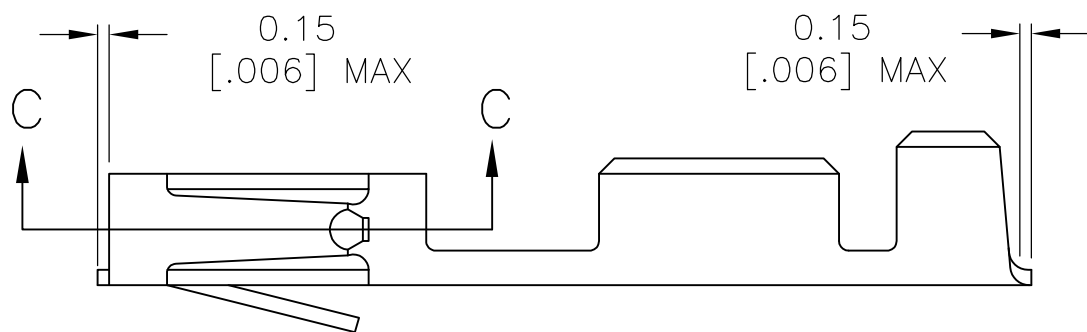
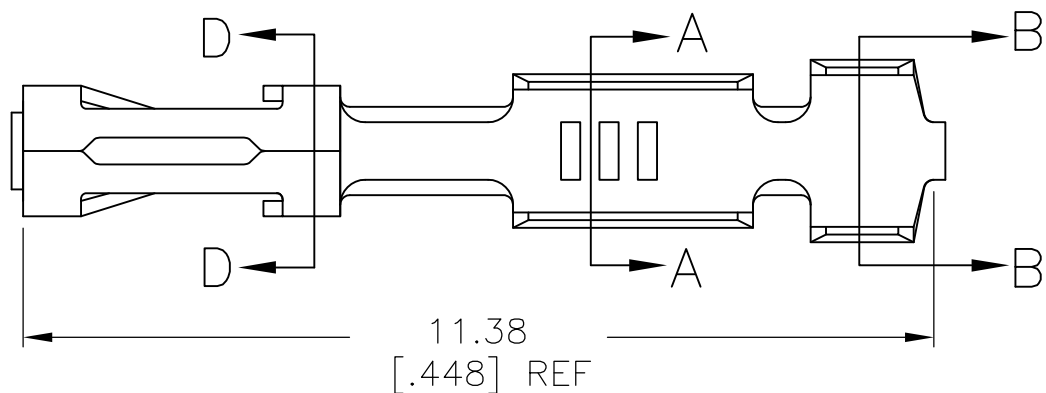


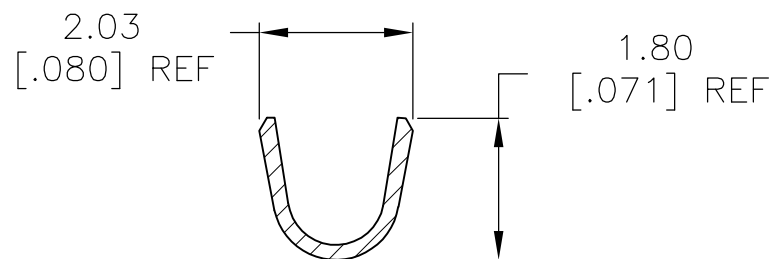
THIS DRAWING IS UNPUBLISHED. RELEASED FOR PUBLICATION

© COPYRIGHT - By - ALL RIGHTS RESERVED.

LOC	DIST	REVISIONS					
AD	00	P	LTR	DESCRIPTION	DATE	DWN	APVD
			M1	REVISED PER ECO-11-004820	11MAR11	RK	HMR

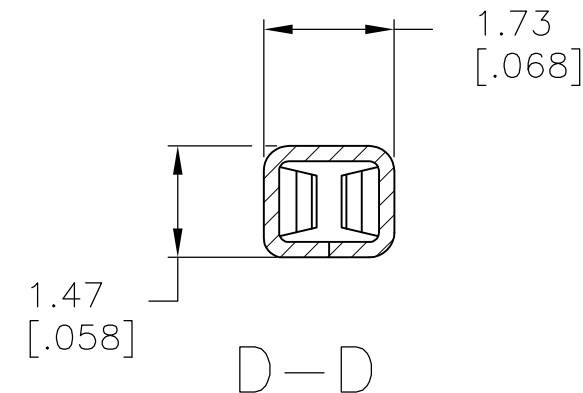
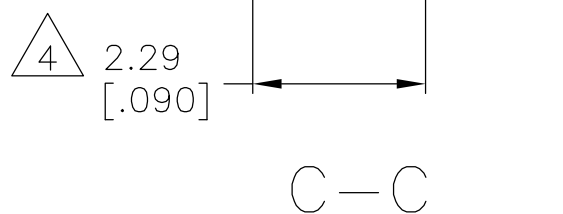


WIRE SIZE #22-#26  
SECTION A-A



INSULATION RANGE 1.55 [.061] MAX  
SECTION B-B

- 1 0.00076 [.000030] MIN GOLD IN CONTACT AREA, GOLD FLASH ON THE REMAINDER OF THE TERMINAL, ALL OVER  
0.00127 [.000050]-0.00254 [.000100] NICKEL ENTIRE TERMINAL.
- 2 PREPLATED 0.00127 [.000050]-0.00381 [.000150] BRIGHT TIN.
- 3 CONTACTS TO BE TREATED WITH LUBRICANT.
- 4 POINT OF MEASUREMENT FOR PLATING THICKNESS (INSIDE BEAMS).



OBSOLETE	-	102128-5
OBSOLETE	-	102128-4
OBSOLETE	-	102128-3
	2 3	102128-2
	1	102128-1
FINISH REF		PART NUMBER

THIS DRAWING IS A CONTROLLED DOCUMENT.		DWN E. BRANDBERG	<b>STE</b> TE Connectivity			
DIMENSIONS: mm [INCHES]		CHK S. SHUEY 03JAN96				
TOLERANCES UNLESS OTHERWISE SPECIFIED:		APVD S. SHUEY 03JAN96	NAME			
0 PLC ± -		PRODUCT SPEC	CONTACT, MOD V, RECEPTACLE, CRIMP SNAP IN, LOOSE PIECE			
1 PLC ± -		108-25007	SIZE			
2 PLC ± 0.13 [.005]		APPLICATION SPEC	CAGE CODE			
3 PLC ± -		114-25003	DRAWING NO			
4 PLC ± -		WEIGHT	RESTRICTED TO			
ANGLES ± -		-	A3 00779 C-102128			
MATERIAL PhBr	FINISH SEE TABLE	CUSTOMER DRAWING		SCALE 10:1	SHEET 1 OF 1	REV M1

# Mouser Electronics

Authorized Distributor

Click to View Pricing, Inventory, Delivery & Lifecycle Information:

[TE Connectivity:](#)

[102128-2](#)