

| LOC | DIST | REVISIONS |     |             |  |           |     |      |
|-----|------|-----------|-----|-------------|--|-----------|-----|------|
| FT  | 0    | P         | LTR | DESCRIPTION |  | DATE      | DWN | APVD |
|     |      |           | A   | NEW DRAWING |  | 01AUG2013 | KH  | MB   |
|     |      |           |     |             |  |           |     |      |
|     |      |           |     |             |  |           |     |      |
|     |      |           |     |             |  |           |     |      |
|     |      |           |     |             |  |           |     |      |

- 1

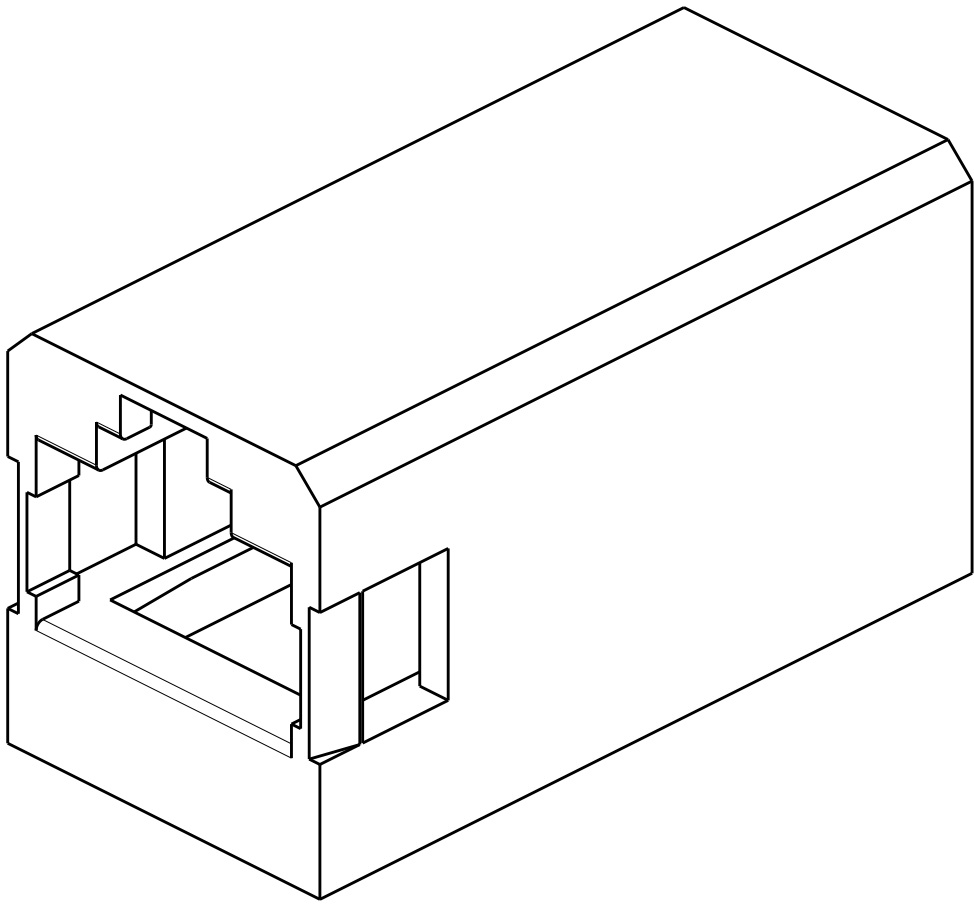
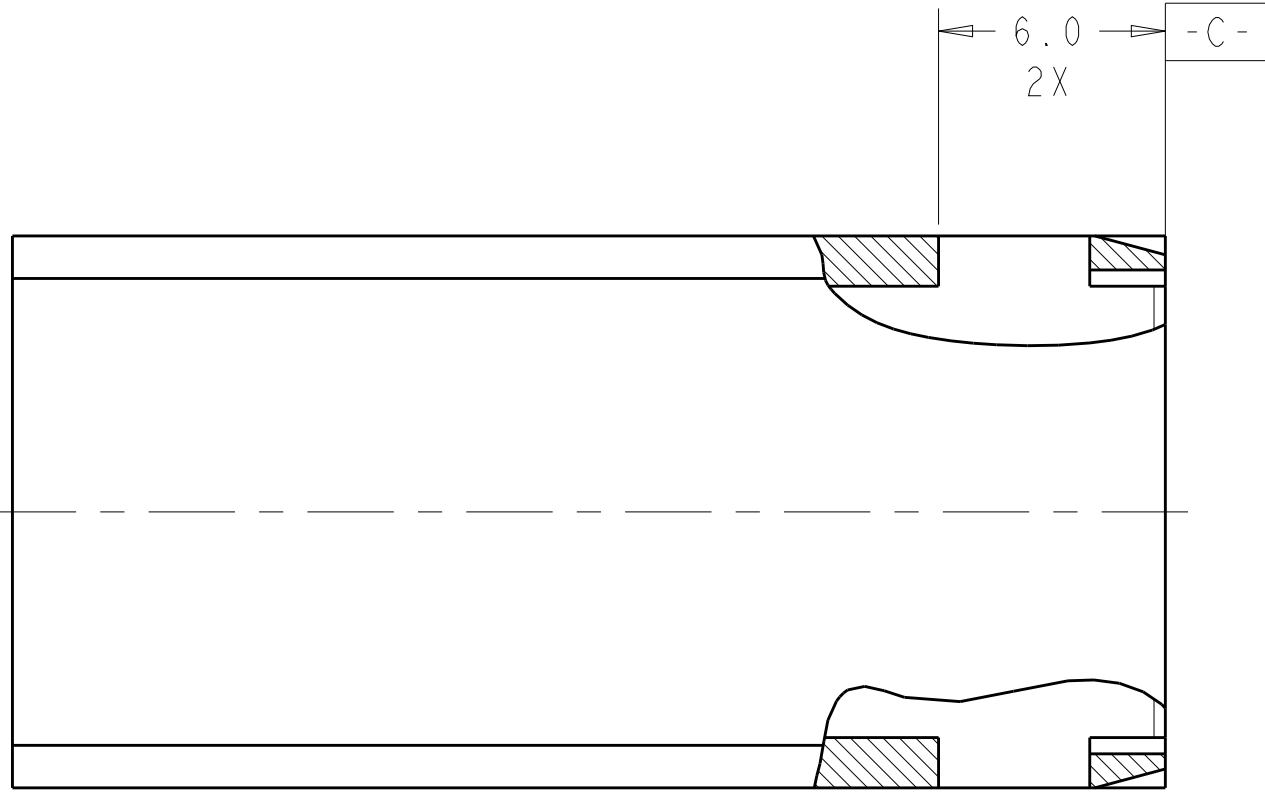
COUPLER DESIGNED TO MEET TO MEET:  
ANSI/TIA/EIA-568-B.2, CATEGORY 5E  
IEC 60603-7, A8F, VARIANT 03  
FCC PART 68  
UL 1863
- 2

MATERIAL:  
JACK HOUSING:  
UL V-0 RATED AT 1.5mm THICKNESS, ABS, GE CYCOLAC FRI5U OR EQUIVALENT,  
UL RTI RATING TO BE 85°C FOR ELECTRICAL  
AND MECHANICAL (WITHOUT IMPACT), COLOR BLACK.  
  
CONTACTS:  
PHOSPHOR BRONZE, PLATED WITH 1.27 µm MIN  
GOLD PER ASTM B488 TYPE 2 GRADE B OVER 2.54 µm MIN NICKEL PER QQ-N-290.  
CONTACT LIFE TO BE 750 INSERTIONS AND EXTRACTATIONS MINIMUM.
- 3

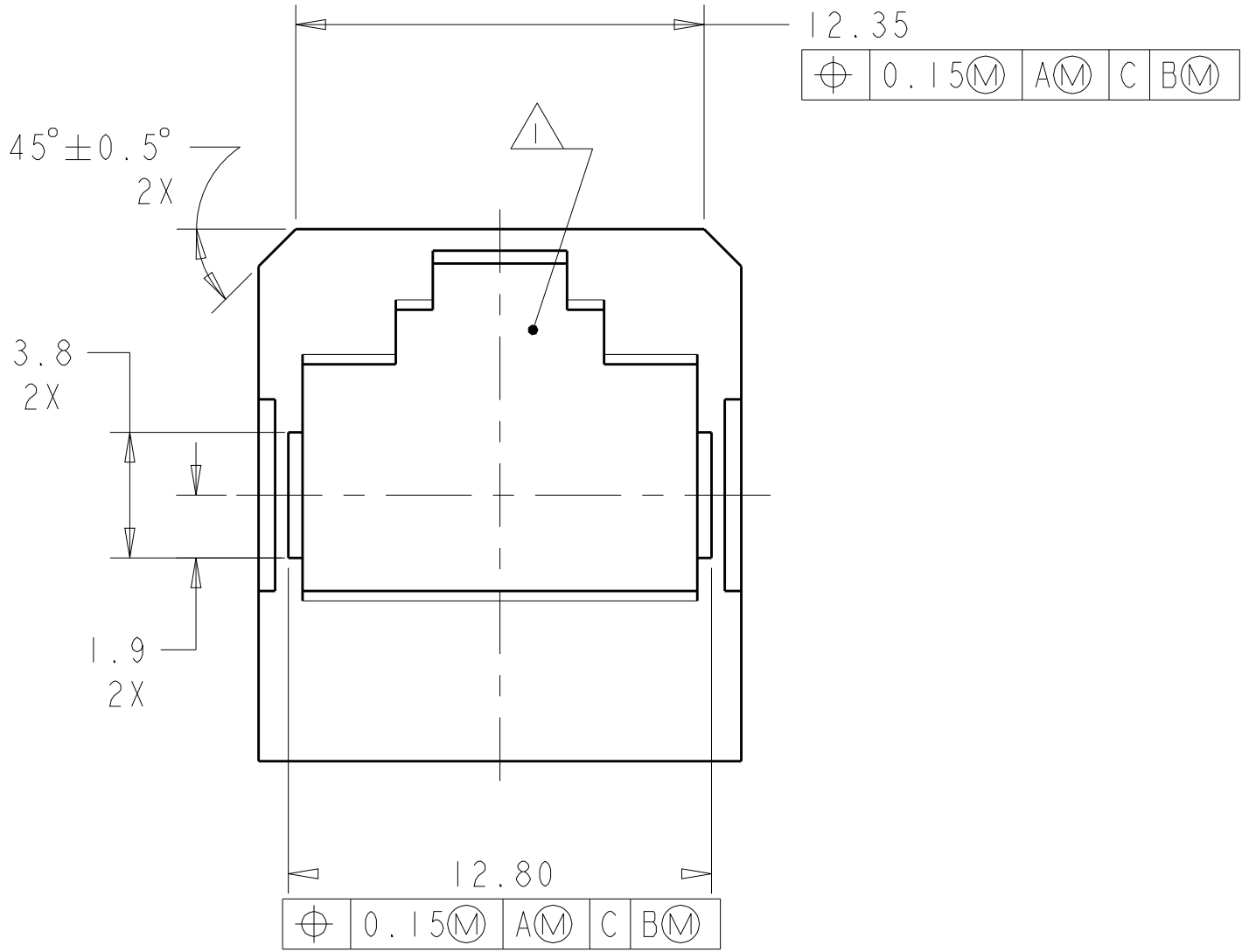
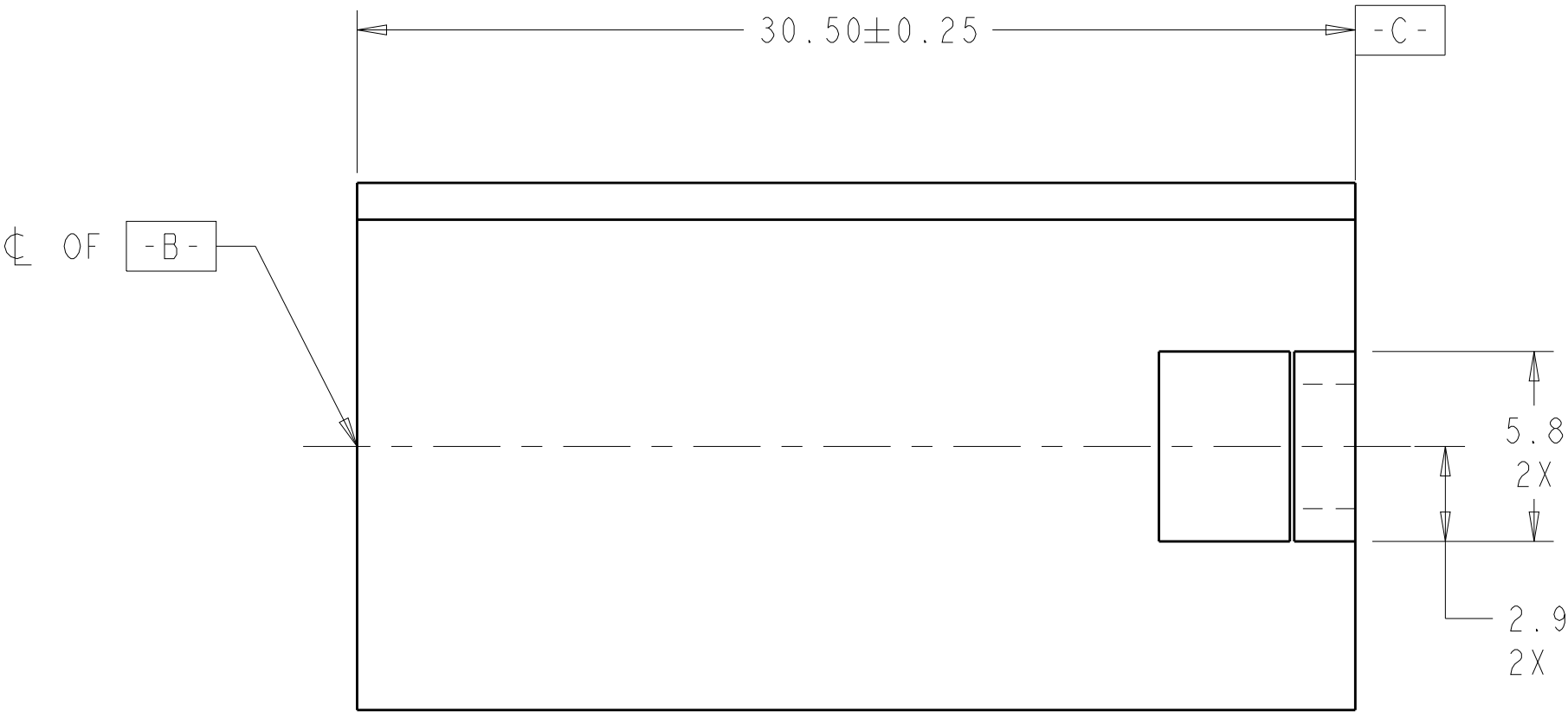
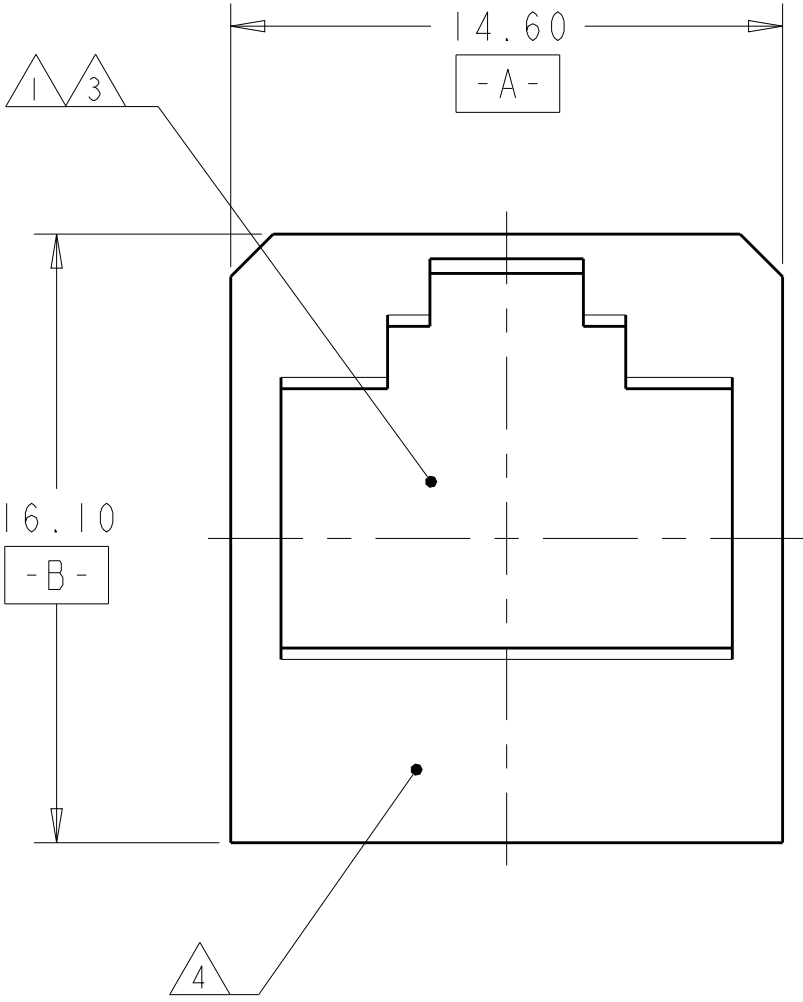
COUPLER CONTACTS ARE STRAIGHT PINNED TO THEIR RESPECTIVE CONTACTS  
PIN 1-1, 2-2, 3-3, ETCETERA.
- 4

TE LOGO IN LOCATION SHOWN  
RAISED 0.08 TO 0.015
5.



COMPLIES WITH DIRECTIVE 2002/95/EC  
(ROHS - RESTRICTIONS ON THE USE OF CERTAIN HAZARDOUS SUBSTANCES)  
TO BE LEAD FREE.



SCALE 4:1



|              |             |
|--------------|-------------|
| <div>1</div> | 1738612-1   |
| REMARKS      | PART NUMBER |

|   |  |  |  |  |  |   |  |  |  |
|---|--|--|--|--|--|---|--|--|--|
| THIS DRAWING IS A CONTROLLED DOCUMENT.  |  |  |  | DWN<br>KIRAN HOLAL<br>01AUG2013        |  |  TE Connectivity |  |  |  |
| DIMENSIONS:   |  |  |  | CHK<br>BRUBAKER MARK<br>01AUG2013      |  | NAME<br>COUPLER ASSEMBLY, MODULAR JACK,<br>INDUSTRIAL CIRCULAR<br>ETHERNET CONNECTOR                  |  |  |  |
| mm  |  |  |  | APVD<br>BRUBAKER MARK<br>01AUG2013     |  |   |  |  |  |
|  |  |  |  | TOLERANCES UNLESS OTHERWISE SPECIFIED: |  | PRODUCT SPEC<br>-   |  |  |  |
| 0 PLC ±.2   |  |  |  | 1 PLC ±0.2                             |  |   |  |  |  |
| 1 PLC ±0.08   |  |  |  | 2 PLC ±.                               |  | APPLICATION SPEC<br>-   |  |  |  |
| 2 PLC ±.  |  |  |  | 3 PLC ±.                               |  |   |  |  |  |
| 3 PLC ±.  |  |  |  | 4 PLC ±.                               |  | SIZE<br>CAGE CODE<br>DRAWING NO   |  |  |  |
| 4 PLC ±.  |  |  |  | ANGLES ±1°                             |  |   |  |  |  |
| MATERIAL  |  |  |  | FINISH                                 |  | RESTRICTED TO<br>-  |  |  |  |
| - 2   |  |  |  | -                                      |  |   |  |  |  |
| Customer Drawing  |  |  |  |  |  | A1 00779 C-1738612  |  |  |  |
|   |  |  |  |  |  | SCALE 5:1 SHEET 1 OF 1 REV A  |  |  |  |
|   |  |  |  |  |  |   |  |  |  |

# Mouser Electronics

Authorized Distributor

Click to View Pricing, Inventory, Delivery & Lifecycle Information:

[TE Connectivity:](#)

[1738612-1](#)