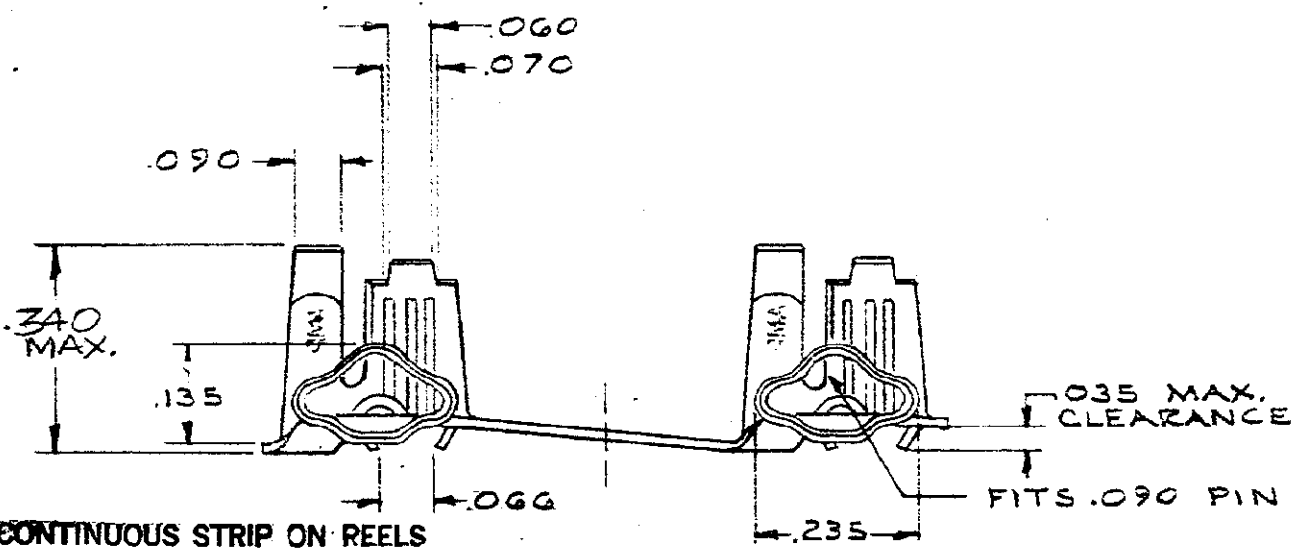
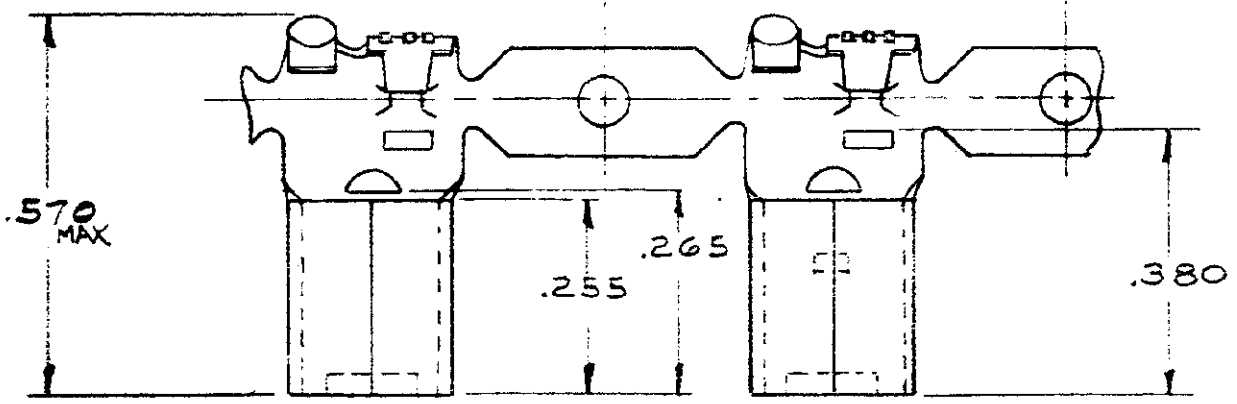


DRAWING MADE IN AMERICAN PROJECTION

NUMBER
60376



CONTINUOUS STRIP ON REELS

PART NUMBER	MATERIAL - FINISH
60376-1	018 PHOS. BRONZE - TIN
	-2 018 BE. COPPER - NONE
	-3 018 BE. COPPER - TIN

~~OBsolete~~

DIMENSIONS IN INCHES. DO NOT SCALE PRINT.

©1971 BY AMP INCORPORATED. ALL RIGHTS RESERVED. AMP PRODUCTS COVERED BY PATENTS AND/OR PATENTS PENDING.

**CUSTOMER COPY
REFERENCE ONLY**

REV	DESCRIPTION	DATE	BY	CHK
C	DES-3 AF-2707	5-11-88	M/S	JT
B	REV .570 WAS .560		AF 3078	69
A	REVISED		AF 0580	5/14/84
	REMOVED FROM 42745			
TR	REVISION RECORD			
DR	N.E. NEFF	4/9/71		
CHK				

MATERIAL AND FINISH	
WIRE RANGE	INSULATION
20 #14	120-170
TOLERANCE EXCEPT AS NOTED	SCALE
= .015	= 1"0
NAME	
.090 PIN RECEPTACLE, FLAG	

AMP		AMP INCORPORATED HARRISBURG, PENNA.	
CLASS	N		
TYPE	N		
LOC	NO	REV	
AF	A	60376	C

Mouser Electronics

Authorized Distributor

Click to View Pricing, Inventory, Delivery & Lifecycle Information:

[TE Connectivity:](#)

[60376-1](#)