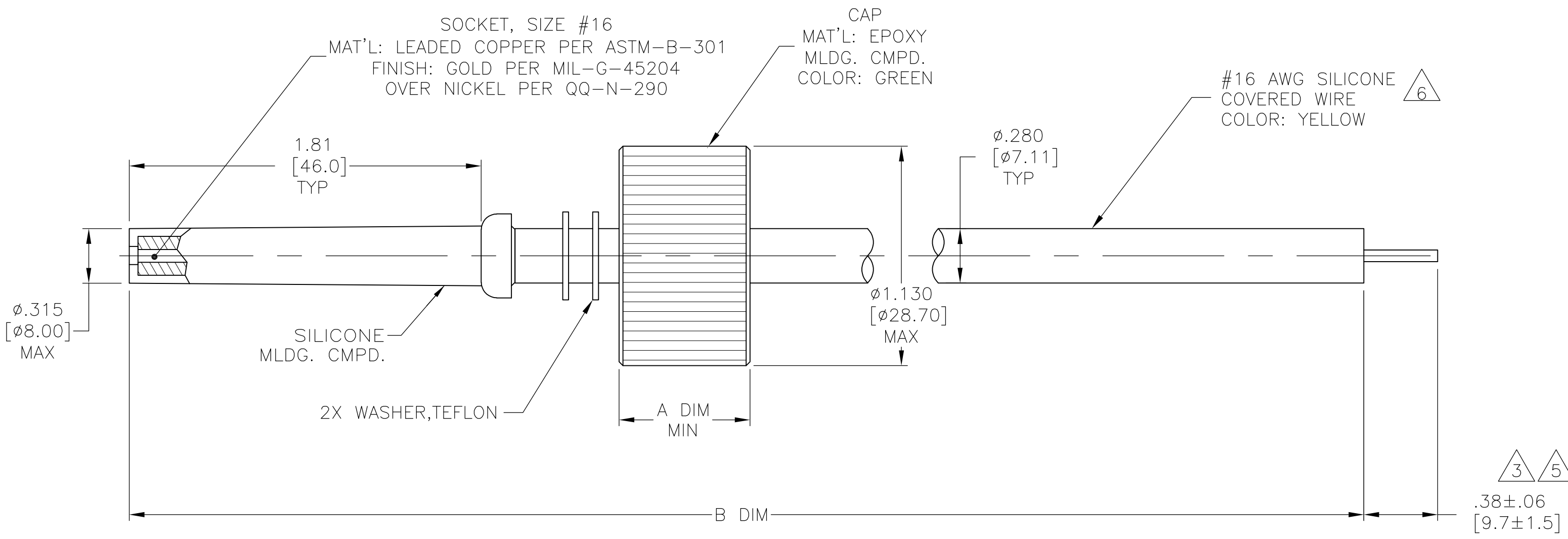


D

C

B

A



1. MARKED PER MIL-STD-130.
2. LEADS WILL MATE WITH AMP LGH-3 RECEPTACLE WITH 1.81 [46.0] BARREL DEPTH.
3. PIGTAIL IS SOLDER DIPPED.
4. OPERATING VOLTAGE: 40 KVDC AT 0 TO 70,000 FEET, -55° C TO 125° C.
5. INSULATION CUT, BUT NOT REMOVED
6. YELLOW WIRE DOES NOT HAVE A SOLID YELLOW INSULATION BUT IS A WHITE WIRE WITH A YELLOW STRIPE.

5	60.00±1.00 [1524.0±25.4]	.67 [17.0]	5-868353-2
3	60.00±1.00 [1524.0±25.4]	.67 [17.0]	868353-2
3	18.00±.12 [457.2±3.0]	.55 [13.8]	868353-1
REMARKS	DIM B	DIM A MIN	PART NUMBER
THIS DRAWING IS A CONTROLLED DOCUMENT.		DWN C.C.THOMAS 12-15-97	TE Connectivity
		CHK D.EABY 12/15/97	
DIMENSIONS: INCHES [mm]		APVD —	NAME LEAD ASSY, SGL END, LGH-3 WIRE COLOR: WHITE AND YELLOW STRIPED
TOLERANCES UNLESS OTHERWISE SPECIFIED:		PRODUCT SPEC —	
0 PLC ± - 1 PLC ± - 2 PLC ± .02 [0.5] 3 PLC ± - 4 PLC ± - ANGLES ± -		APPLICATION SPEC —	SIZE A2 CAGE CODE 00779 DRAWING NO 868353 RESTRICTED TO —
MATERIAL SEE CALLOUTS		WEIGHT —	
FINISH SEE CALLOUTS		CUSTOMER DRAWING	SCALE 2:1 SHEET 1 of 1 REV C

868353

Mouser Electronics

Authorized Distributor

Click to View Pricing, Inventory, Delivery & Lifecycle Information:

[TE Connectivity:](#)

[868353-2](#)