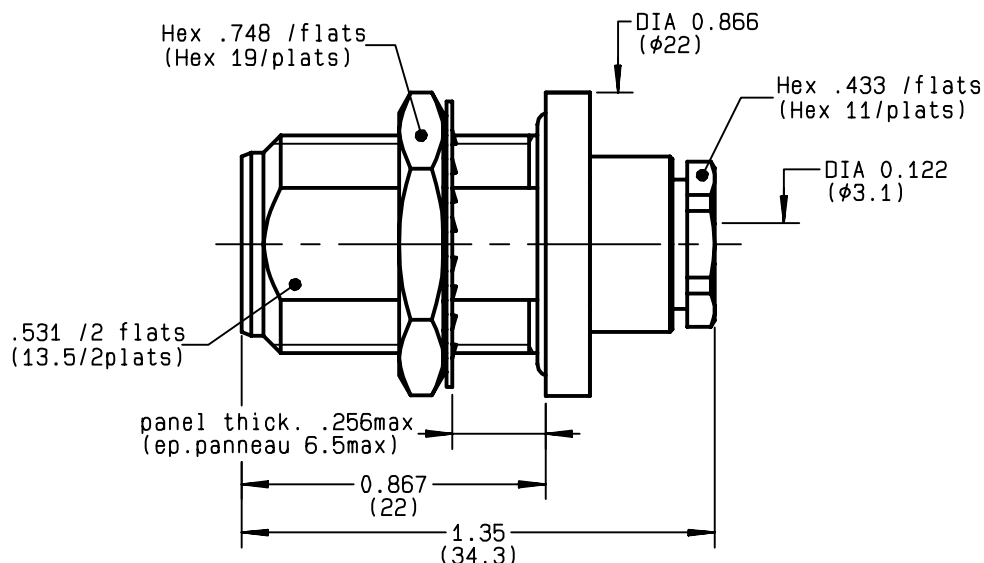
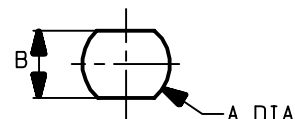


**STRAIGHT BULKHEAD JACK PANEL SEAL**  
**CLAMP TYPE - CABLE 2.6/50+75**
**R161.322.000**  
**SERIES N**

**PERCAGE PANNEAU**  
**MOUNTING HOLE**


	MM		INCH	
	maxi	mini	maxi	mini
A	16.1	16	0.634	0.63
B	13.7	13.6	0.539	0.535

NOMINAL IMPEDANCE	<b>50</b>	$\Omega$
FREQUENCY RANGE	<b>0-11</b>	GHz
TEMPERATURE RATING	<b>-55/+155</b>	$^{\circ}\text{C}$
V.S.W.R	<b>1.40*</b>	+ x F(GHz)Maxi
RF INSERTION LOSS	<b>0.048</b>	$\sqrt{F}(\text{GHz})$ dB Maxi
VOLTAGE RATING	<b>250</b>	Veff Maxi
DIELECTRIC WITHSTANDING VOLTAGE	<b>750</b>	Veff Mini
INSULATION RESISTANCE	<b>5000</b>	M $\Omega$ Mini
HERMETIC SEAL	<b>NA</b>	Atm.cm <sup>3</sup> /s
LEAKAGE (pressurized only)	<b>IP 67</b>	
MECHANICAL DURABILITY	<b>500</b>	Cycles
WEIGHT	<b>41.1</b>	gr
SPECIFICATION		

CABLES : **K02252D**  
**K02252D SPL**  
**KX 22A**  
**RD 316**  
**RG 179**  
**RG 187**  
**RG 188**  
**RG 316**

## OTHERS CHARACTERISTICS

\* pour cablage sur 50 ohms

CABLE RETENTION	<b>40</b>	N Mini
CENTER CONTACT RETENTION		
Axial force - mating end	<b>27</b>	N Mini
Axial force - opposite end	<b>27</b>	N Mini
Torque	<b>NA</b>	cm.N Mini
RECOMMENDED TORQUES		
Mating	<b>NA</b>	cm.N
Panel nut	<b>500</b>	cm.N
Clamp nut	<b>150</b>	cm.N

## CONNECTOR PARTS MATERIALS

BODY	BRASS
OUTER CONTACT	BRASS
CENTER CONTACT	BERYLLIUM COPPER
INSULATOR	PTFE
GASKET	SILICONE RUBBER
OTHERS PIECES	BRASS

## FINISH

(all values are given)  
in micrometers

BBR 2
BBR 2
GOLD 0.5 OVER NICKEL 2
-
-
BBR 2

BONOMINI

**ISSUE**  
**0306J00**
**CREATION DATE**  
**12/10/1992**

FILE PART-NUMBER


**RADIAL**<sup>®</sup>

The information given here is subject to change without notice.  
 Design changes may be in order to improve the product.

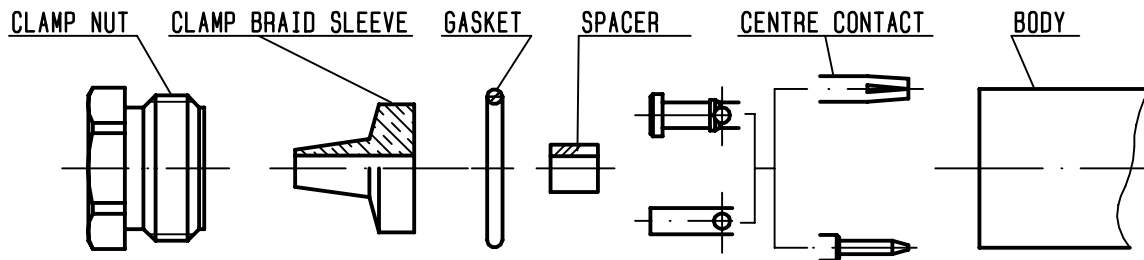
Connect to the future



**R161.322.000**

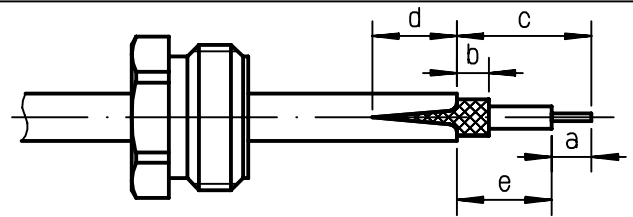
ISSUE 0306J00 SERIES

N



①

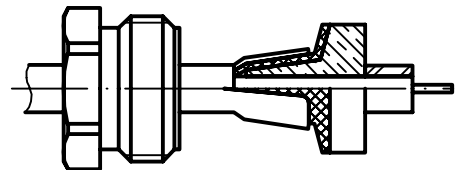
Slide clamp nut onto cable .  
Strip the cable .  
Cut the jacket ( 2 slots )  
apart if necessary .  
-



Stripping	a	b	c	d	e
inch	0.157	0.079	0.315	0.079	0.157
mm	4	2	8	2	4

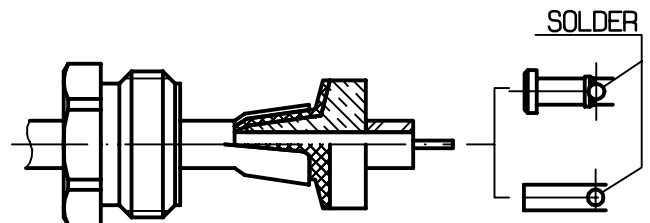
②

Slide the clamp braid sleeve between  
cable dielectric and braid .  
Cut the braid flush with the clamp  
braid sleeve .  
Slide the spacer .  
-



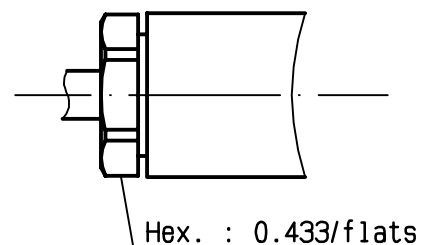
③

Solder the cable inner conductor into  
centre contact .  
Slide the back nut over the clamp  
assembly .  
-  
-  
-



④

Mount the gasket into the connector .  
Screw sub-assembly into the connector  
body .  
( recommended coupling torque 13.27 in.lb )  
-



Hex. : 0.433/flats

# Mouser Electronics

Authorized Distributor

Click to View Pricing, Inventory, Delivery & Lifecycle Information:

Radial:

R161322000