

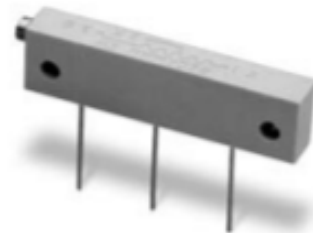
# Multi-Turn Trimmer

## Model 78



### Features:

- 1-1/4" rectangular
- Cermet



## Electrical

Standard Resistance Range, Ohms	10 to 2Meg
Standard Resistance Tolerance	$\pm 10\%$ (<100 Ohms = $\pm 20\%$ )
Input Voltage, Maximum	300 Vdc or rms not to exceed power rating
Slider Current, Maximum	100mA or within rated power, whichever is less
Power Rating, Watts	1.0 at 70°C derating to 0 at 125°C
End Resistance, Maximum	2 Ohms
Actual Electrical Travel, Turns, Nominal	22
Dielectric Strength	500 Vrms
Insulation Resistance, Minimum	1,000 Megohms
Resolution	Essentially infinite
Contact Resistance Variation, Maximum	1% or 1 Ohm, whichever is greater

## Environmental

Seal	85°C Fluorinert® (No Leaks)
Temperature Coefficient, Maximum	$\pm 100\text{ppm}/^\circ\text{C}$
Operating Temperature Range	-55°C to +125°C
Thermal Shock	5 cycles, -55°C to +125°C (1% $\Delta\text{RT}$ , 1% $\Delta\text{VR}$ )
Moisture Resistance	Ten 24 hour cycles (1% $\Delta\text{RT}$ , IR 1,000 Megohms Min.)
Shock, 6ms Sawtooth	100G's (1% $\Delta\text{RT}$ , 1% $\Delta\text{VR}$ )
Vibration	20G's, 10 to 2,000 Hz (1% $\Delta\text{RT}$ , 1% $\Delta\text{VR}$ )
High Temperature Exposure	250 hours at 125°C (2% $\Delta\text{RT}$ , 2% $\Delta\text{VR}$ )
Rotational Life	200 cycles (3% $\Delta\text{RT}$ )
Load Life at 1.0 Watts	1,000 hours at 70°C (2% $\Delta\text{RT}$ )
Resistance to Solder Heat	260°C for 10 sec. (1% $\Delta\text{RT}$ )

## Mechanical

Mechanical Stops	Clutch Action, both ends
Torque, Starting Maximum	5oz.-in. (0.035 N-m)
Weight, Nominal	.09 oz. (2.6 grams)

### General Note

TT Electronics reserves the right to make changes in product specification without notice or liability. All information is subject to TT Electronics' own data and is considered accurate at time of going to print.

© TT electronics plc

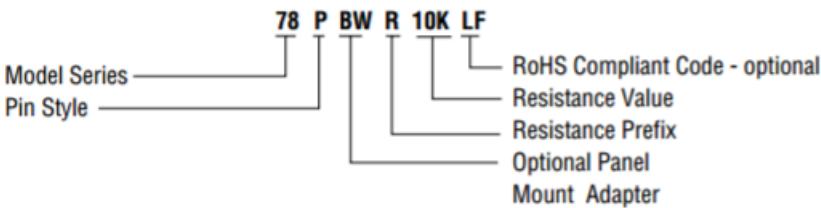
TT Electronics | BI Technologies  
413 Rood RD, Suite 7  
Calexico, CA 92231  
Ph: + 1 (714) 447-2345  
[www.ttelectronics.com/bi-technologies](http://www.ttelectronics.com/bi-technologies)

Issue B 04/2019 Page 1

Packaging Information

Standard: Boxes  
Capacity = 25 Units

Ordering Information



Note: Use '56BW' to order panel mount adapter without trimmer

Standard Resistance Values

10	200	5K	50K	500K
20	500	10K	100K	1Meg
50	1K	20K	200K	2Meg
100	2K	25K	250K	

**CIRCUIT DIAGRAM**

**NOTES**

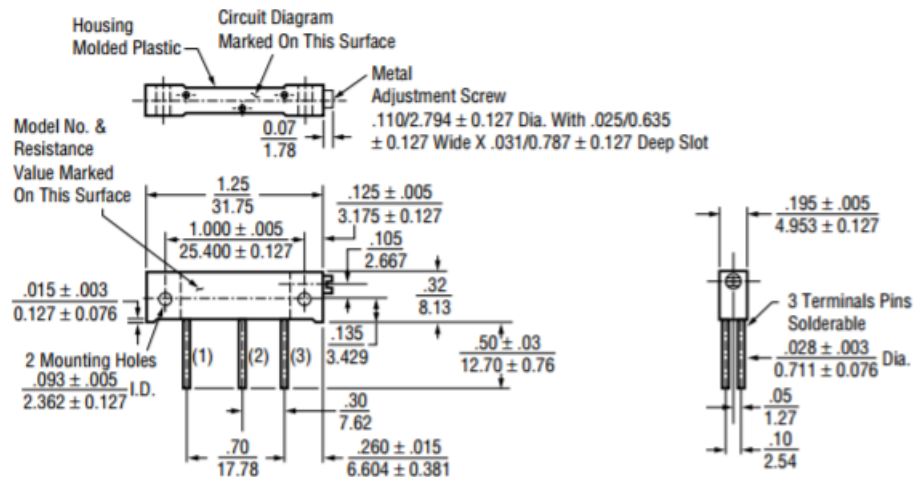
Metric equivalents, based on 1 inch = 25.4mm are rounded to the same number of significant figures as in the original English units and are provided for general information only.

Tolerances unless otherwise specified:  
Linear = ± .01 inches (.25mm)  
Angular = ± 2 degrees

### Outline Drawings

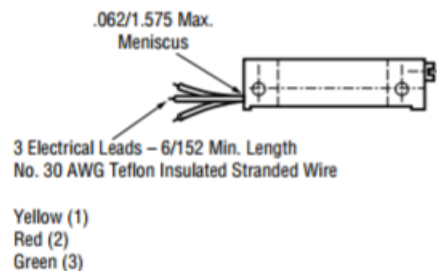
#### SIDE ADJUSTMENT (Inch/mm)

##### Model 78P

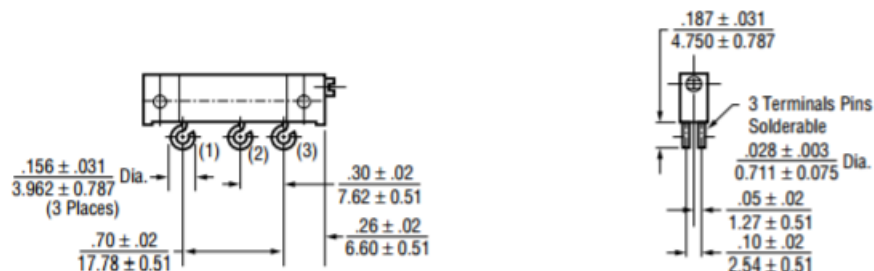


Note: Model 78P dimensions applicable to all other models except as noted.

##### Model 78L



##### Model 78S



#### General Note

TT Electronics reserves the right to make changes in product specification without notice or liability. All information is subject to TT Electronics' own data and is considered accurate at time of going to print.

© TT electronics plc

TT Electronics | BI Technologies

413 Rood RD, Suite 7

Calexico, CA 92231

Ph: + 1 (714) 447-2345

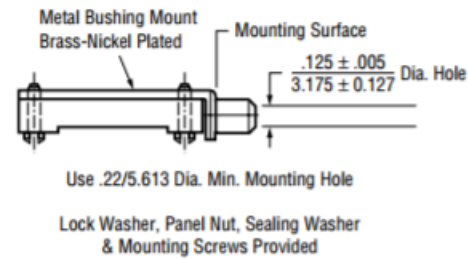
[www.ttelectronics.com/bi-technologies](http://www.ttelectronics.com/bi-technologies)

Issue B 04/2019 Page 3

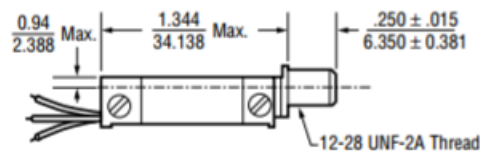
### Outline Drawings

#### PANEL MOUNT ADAPTER (Inch/mm)

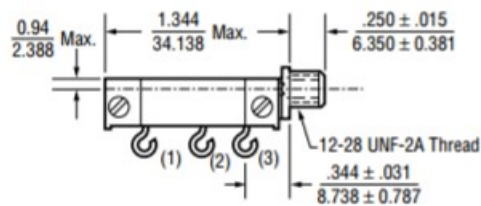
##### Model 56BW (Adapter Only)



##### Model 78LBW (Adapter Pre-Assembled with Trimmer)



##### Model 78SBW (Adapter Pre-Assembled with Trimmer)



#### General Note

TT Electronics reserves the right to make changes in product specification without notice or liability. All information is subject to TT Electronics' own data and is considered accurate at time of going to print.

© TT electronics plc

# Mouser Electronics

Authorized Distributor

Click to View Pricing, Inventory, Delivery & Lifecycle Information:

## TT Electronics:

[78LBWR2K](#) [78PR100K](#) [78PR10K](#) [78PR1K](#) [78PR200](#) [78PR20K](#) [78PR2K](#) [78PR500K](#) [78PR50K](#) [78PR5K](#)  
[78LBWR2KLF](#) [78LR100LF](#) [78LR100KLF](#) [78LR1KLF](#) [78LR500KLF](#) [78PBWR2KLF](#) [78PBWR50LF](#) [78PR10LF](#)  
[78PR100KLF](#) [78PR10KLF](#) [78PR1KLF](#) [78PR200LF](#) [78PR200KLF](#) [78PR20KLF](#) [78PR25KLF](#) [78PR2KLF](#)  
[78PR500LF](#) [78PR500KLF](#) [78PR50KLF](#) [78PR5KLF](#) [78SBWR50KLF](#) [78PR6.5MEG](#) [78PR1MEG](#) [78LBWR10K](#)  
[78LR2KLF](#) [78LR200LF](#) [78LR2MEGLF](#) [78PR25K](#) [78LBWR20LF](#) [78LBWR250KLF](#) [78PR2MEGLF](#) [78LBWR1KLF](#)  
[78LBWR200LF](#) [78PBWR100KLF](#) [78PBWR10KLF](#) [78PBWR1MEGLF](#) [78PBWR20LF](#) [78PBWR2MEGLF](#)  
[78PBWR500LF](#) [78PR1MEGLF](#) [78PR20LF](#) [78PR50LF](#) [78LBWR10LF](#) [78LR20KLF](#) [78PBWR100LF](#) [78LR50KLF](#)  
[78PBWR10LF](#) [78PBWR1KLF](#) [78PBWR250KLF](#) [78PBWR5KLF](#) [78PR100LF](#) [78LBWR50LF](#) [78LBWR500LF](#)  
[78LBWR500KLF](#) [78LR250KLF](#) [78LR25KLF](#) [78LR500LF](#) [78PBWR20KLF](#) [78PBWR500KLF](#) [78PBWR50KLF](#)  
[78PR250KLF](#) [78LBWR100KLF](#) [78LBWR200KLF](#) [78LR1MEGLF](#) [78LR20LF](#) [78LR50LF](#) [78LR5KLF](#) [78PBWR200LF](#)  
[78PBWR200KLF](#) [78PBWR25KLF](#) [78LBWR100LF](#) [78LBWR10KLF](#) [78LBWR1MEGLF](#) [78LBWR25KLF](#) [78LR10LF](#)  
[78LBWR2MEGLF](#) [78LBWR50KLF](#) [78LBWR20KLF](#) [78LBWR5KLF](#) [78LR10KLF](#) [78LR200KLF](#) [78SBWR100LF](#)  
[78SR50LF](#) [78SR25KLF](#) [78SBWR100KLF](#) [78SBWR20LF](#) [78SR100LF](#) [78SBWR50LF](#) [78SBWR5KLF](#) [78SBWR2KLF](#)