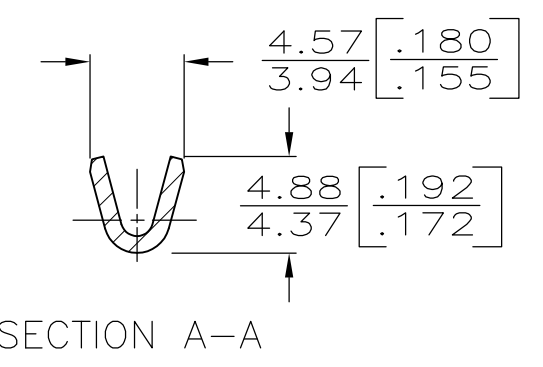
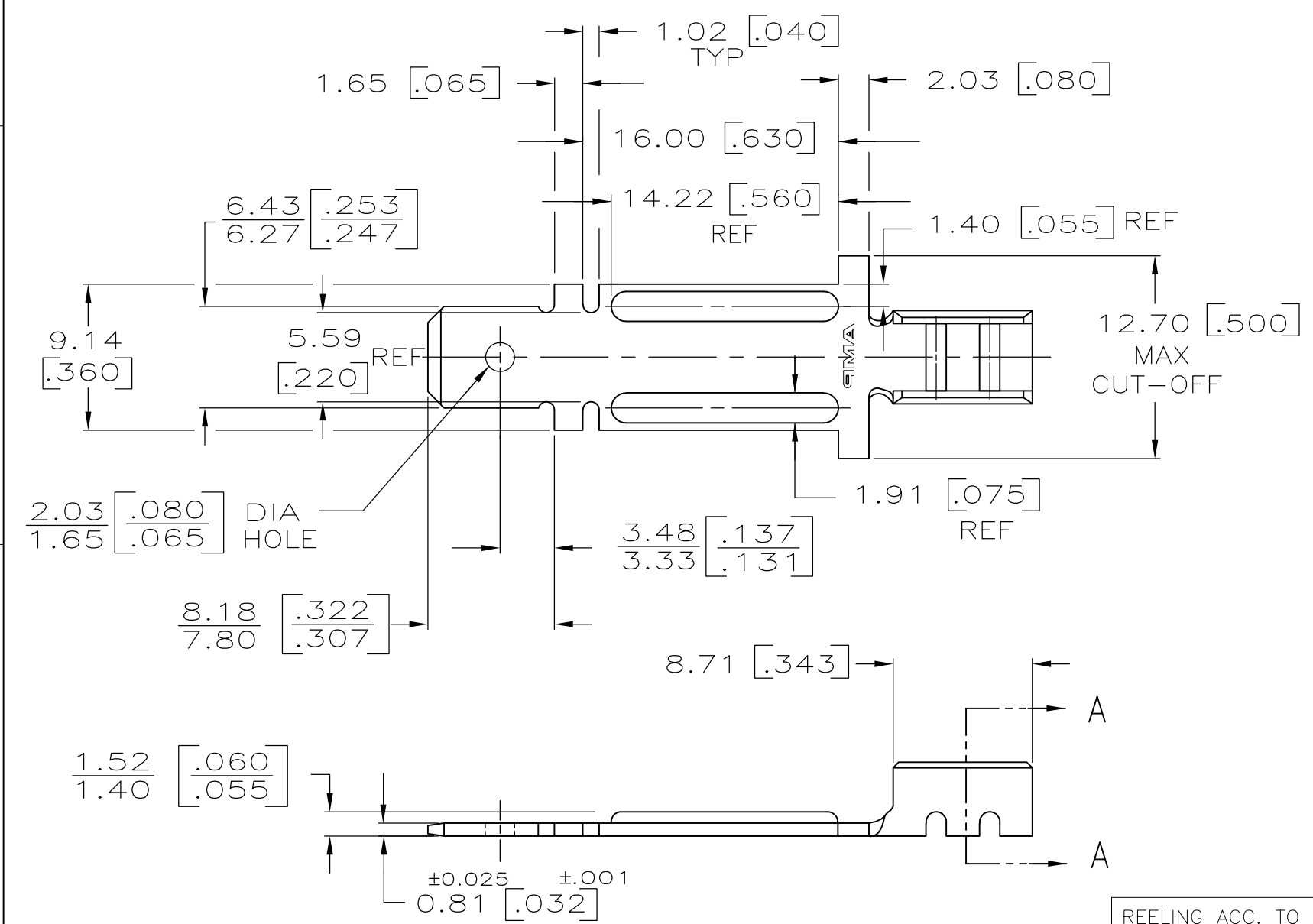


LOC	DIST	REVISIONS					
AF	50	P	LTR	DESCRIPTION	DATE	DWN	APVD
		A1		REVISED PER ECR-14-014265	24SEP2014	NK	DC

- 1 DIMENSIONS IN BRACKETS ARE IN INCHES.
- 2 CONTINUOUS STRIP ON REELS.

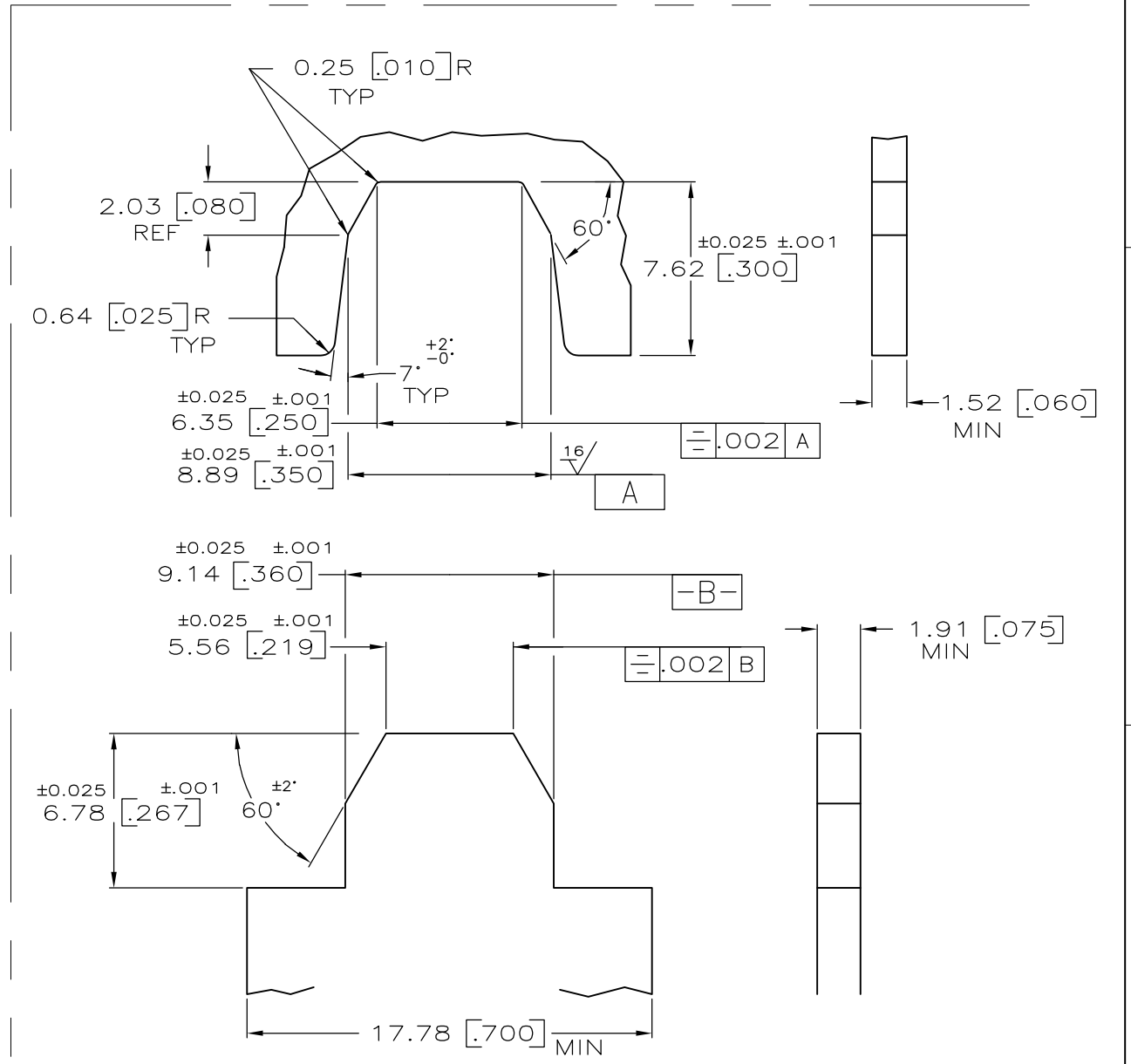
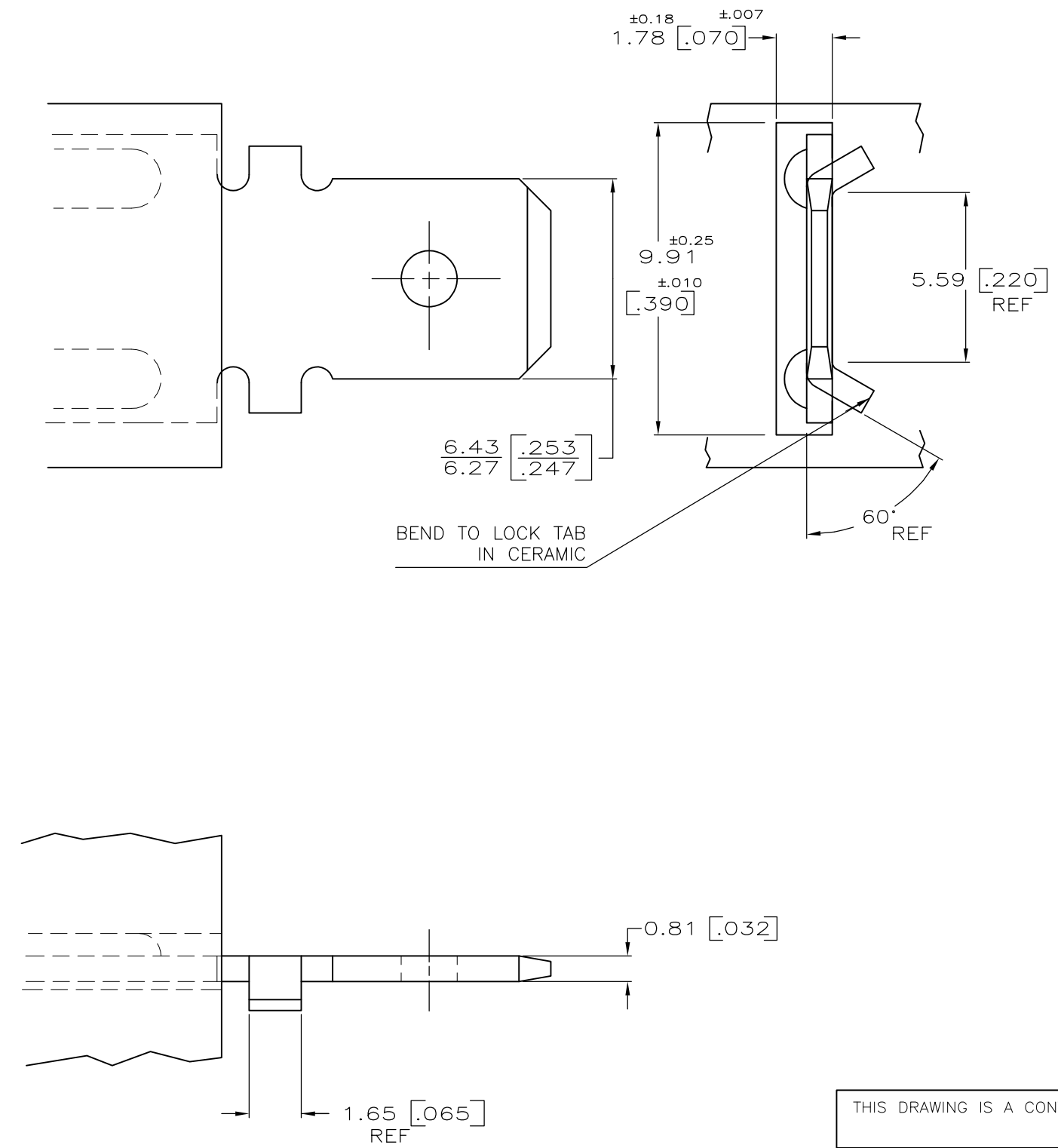


REELING ACC. TO TE SPEC. 107-3 FIG. 1	[20-15] 0.81-1.45 MM DIA	63522-2
REELING ACC. TO TE SPEC. 107-3 FIG. 3	[20-15] 0.81-1.45 MM DIA	63522-1
REELING	WIRE SIZE	PART NUMBER

THIS DRAWING IS A CONTROLLED DOCUMENT.		DWN JR RUTH 11/22/88	STE TE Connectivity			
DIMENSIONS: mm[INCHES]		CHK M FEHER 11/23/88				
TOLERANCES UNLESS OTHERWISE SPECIFIED:		APVD J GILLESPIE 11/28/88	NAME TAB, NI-CHROME WIRE, .250 SERIES			
0 PLC ± -		PRODUCT SPEC				
1 PLC ± -		APPLICATION SPEC	SIZE	CAGE CODE	DRAWING NO	RESTRICTED TO
2 PLC ± -		114-2097	A3	00779	C-63522	-
3 PLC ± 0.25[.010]		WEIGHT	CUSTOMER DRAWING			
4 PLC ANGLES ± -		-	SCALE	SHEET	REV	
MATERIAL CRS TEMP 2	FINISH NICKEL .000100 MIN	4:1		1 OF 2	A1	

LOC	DIST	REVISIONS					
AF	50	P	LTR	DESCRIPTION	DATE	DWN	APVD
		-		SEE SHEET 1	-	-	-

D
C
B
A



63522-2
63522-1
PART NUMBER

THIS DRAWING IS A CONTROLLED DOCUMENT.		DWN JR RUTH 11/22/88	TE Connectivity	
DIMENSIONS: mm[INCHES]		CHK M FEHER 11/23/88		
TOLERANCES UNLESS OTHERWISE SPECIFIED:		APVD J GILLESPIE 11/28/88	NAME	
0 PLC ± - 1 PLC ± - 2 PLC ± - 3 PLC ± 0.38[0.015] 4 PLC ± - ANGLES ± -		PRODUCT SPEC	TAB, NI-CHROME WIRE, .250 SERIES	
MATERIAL CRS TEMP 2		FINISH NICKEL .000100 MIN	APPLICATION SPEC 114-2097	RESTRICTED TO
		WEIGHT -	SIZE A3	CAGE CODE 00779
		CUSTOMER DRAWING	DRAWING NO C-63522	REV A1
			SCALE 6:1	SHEET 2 OF 2

Mouser Electronics

Authorized Distributor

Click to View Pricing, Inventory, Delivery & Lifecycle Information:

[TE Connectivity:](#)

[63522-1](#)