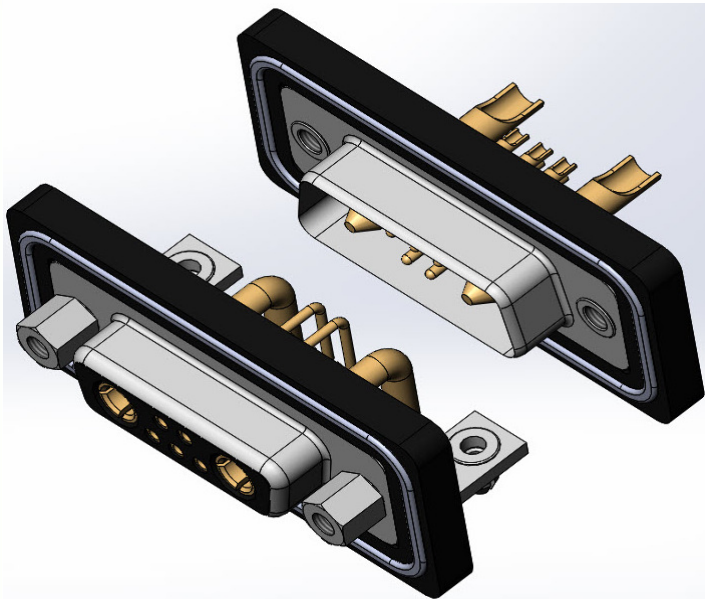




SERIES 600W

WATERPROOF D-SUB POWER COMBO



FEATURES:

Waterproof Power Combo is available in 5 pin sizes with 2 power contacts
Contact Terminations are available in:

- 90° Right Angle PCB Tail
- 180° Straight or Vertical PCB Tail
- Solder Cup Tail

Material: PBT Thermoplastic with 30% Glass Filled,
UL 94V-0 Rated, Black color

Watertight Frame: PBT Thermoplastic with 30% Glass Filled,
UL 94V-0 Rated, Black Color

Shell: Steel, Nickel Plated

O-Ring: Silicone

Epoxy Sealant: Epoxy

Contact Material: Copper Alloy

SPECIFICATIONS:

Contact Current Rating:

High Power Contact: **10.0 A - 40.0 A**

Signal Contact: **5.0 A**

Contact Resistance:

High Power Contact: 1.0 milliohm maximum

Signal Contact: 10.0 milliohm maximum

Dielectric Withstanding Voltage: 1000V AC for 1 Minute

Insulation Resistance: 5000 Megohms minimum

Temperature Rating: -25°C ~ +85°C

Degree of Protection: IP67 as per IEC60529

Example Part Number:

627-W7W-220-012

SERIES:
 PLUG, Vertical PCB Mount, Standard Size 627
 Receptacle, Vertical PCB Mount, Standard Size 628
 Receptacle, Right Angle, 10.3 [0.406] Standard Footprint 630

CROSS / REF:
 EDAC CODE
 WATERPROOF W

NO. OF CONTACTS:
 7 PIN WITH TWO POWER CONTACT - 7W2 7W

CONTACT PLATING
 Gold Flash Plating over Nickel 2
 15 µIN of Gold Plating over Nickel 3
 30 µIN of Gold Plating over Nickel 6

MOUNTING OPTION:
 2 #4-40 UNC THREADED HOLE
 3 RIVETED #4-40 UNC BOARDLOCKS
 (Only for Vertical DIP version)
 4 BRACKET #4-40 UNC WITH BOARDLOCKS
 (Only for Right Angle version)

NOTE: ALL CONNECTORS ARE SHIPPED WITH
 #4-40 UNC HEXAGON SCREWS
 (Packed Separately)

SHELL OPTIONS:
 1 NICKEL PLATED

INSULATOR COLOR:
 0 BLACK

CONTACT CODE:
 20 PC TAIL FOR STANDARD D-SUB
 22 SOLDER CUP TERMINATION
 40 RIGHT ANGLE TAIL,
 10.3 [0.405] FOOTPRINT (9.4 NODE)

Mouser Electronics

Authorized Distributor

Click to View Pricing, Inventory, Delivery & Lifecycle Information:

[EDAC:](#)

[627-W7W-220-013](#) [628-W7W-220-012](#) [627-W7W-222-012](#) [627-W7W-220-012](#) [630-W7W-240-014](#)