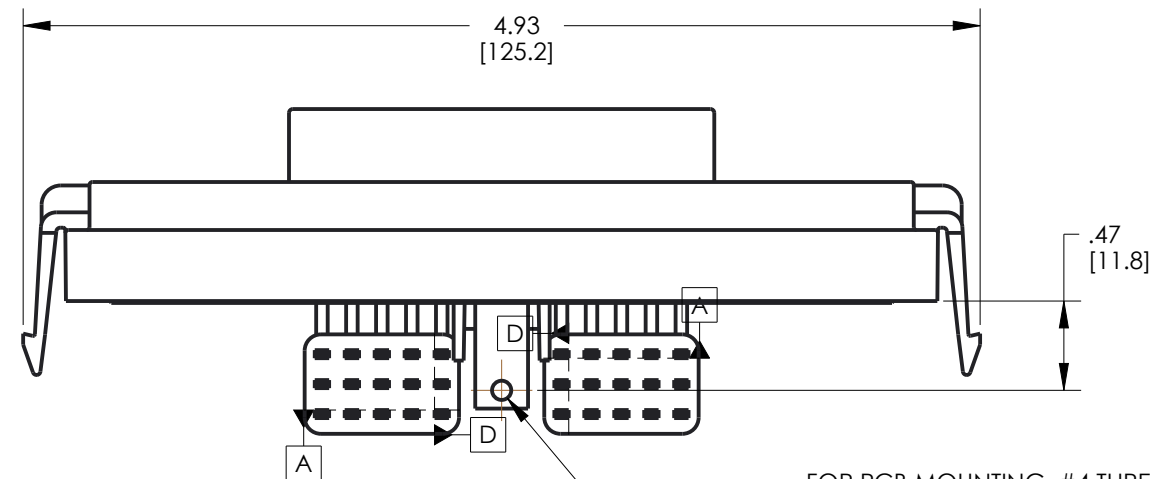
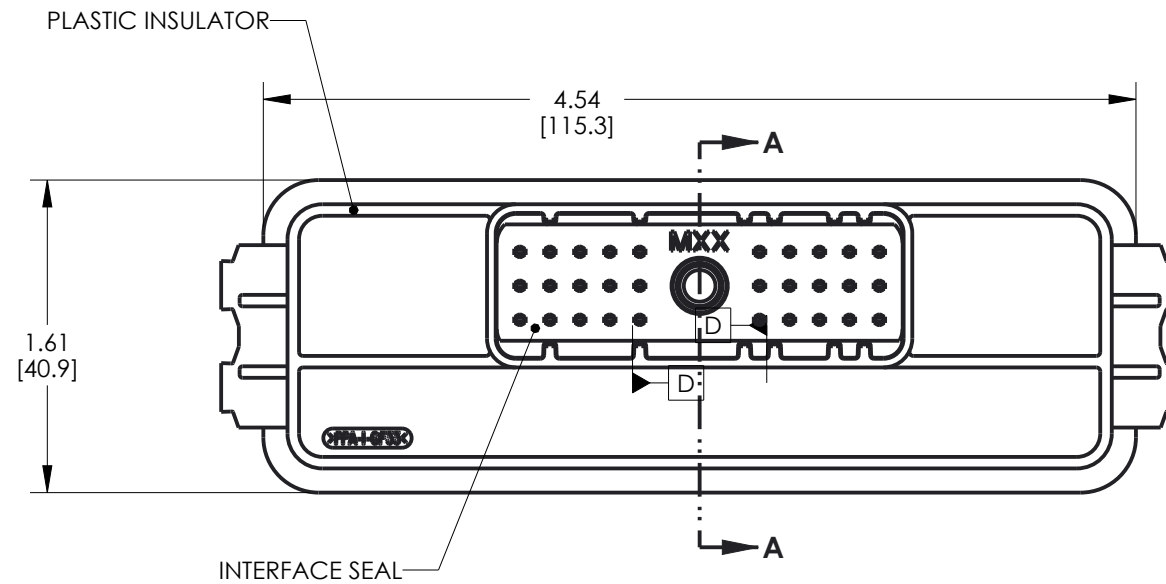
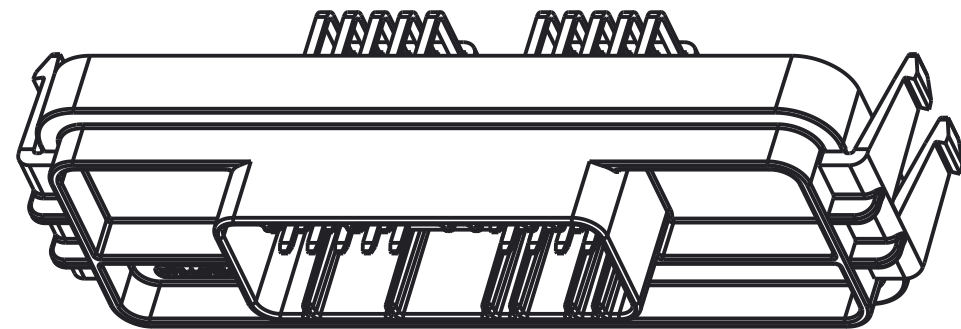
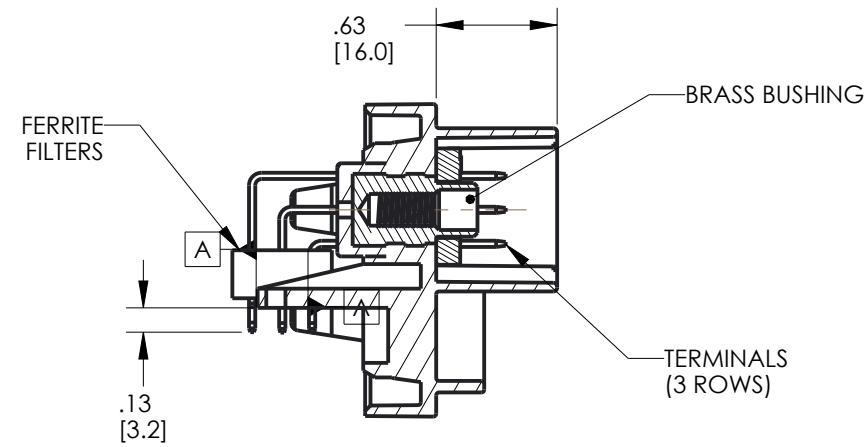


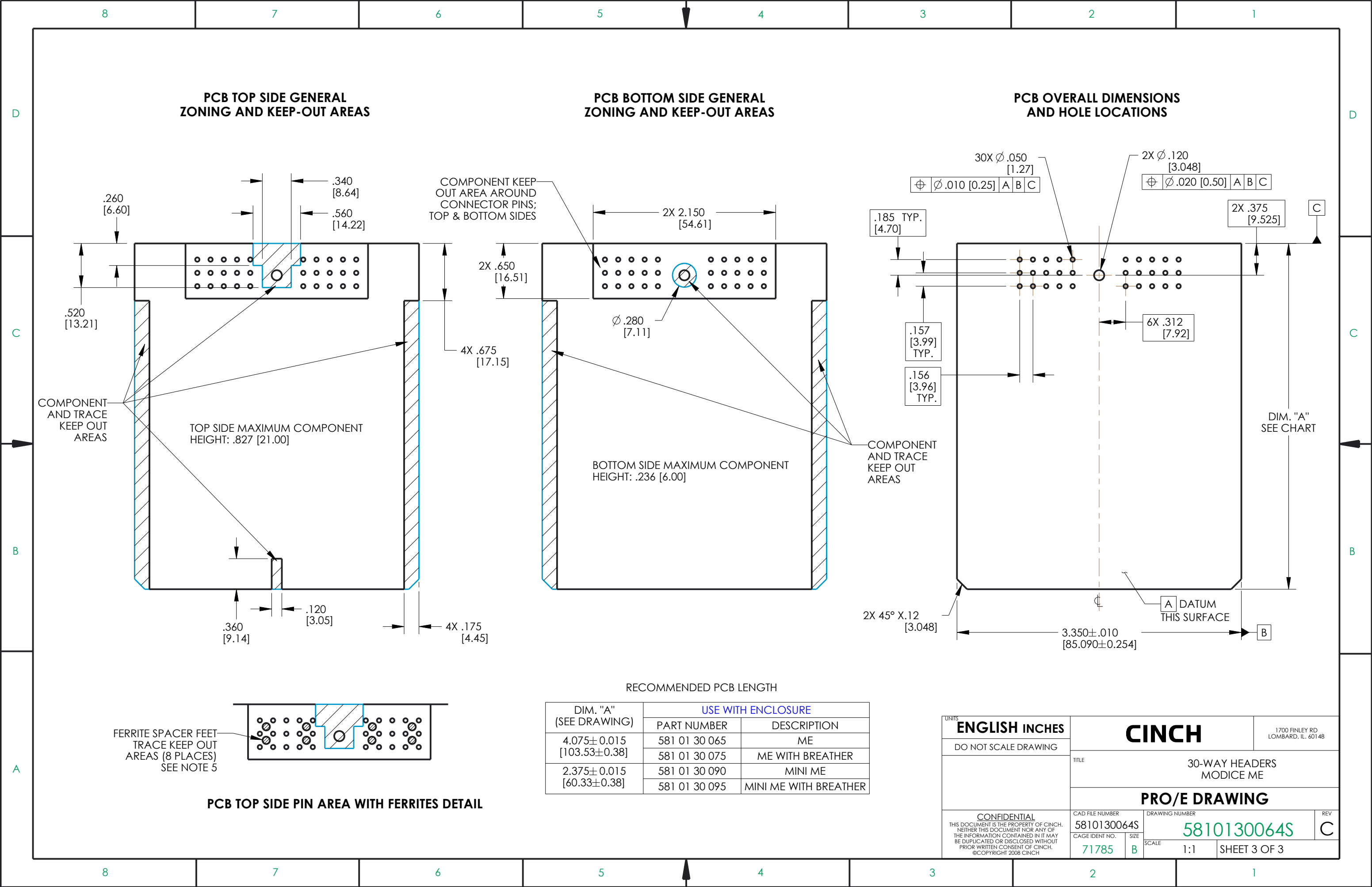
8	7	6	5	4	3	2	1								
<div>CINCH PART NUMBER MATRIX</div> <div><div><div>P/N: 5810130064</div><div>30-WAY HEADER ASSEMBLY WITHOUT FERRITE FILTERS</div><div></div></div><div><div>P/N: 5810130072</div><div>30-WAY HEADER ASSEMBLY WITH FERRITE FILTERS</div><div></div></div><div>MATES WITH CINCH HARNESS CONNECTOR P/N: 5810130029</div></div> <div><div>DRAWING REVISIONS (RELEASE DATE ON FILE)</div><table><tr><td>REV</td><td>DOCUMENT</td><td>APP</td><td>APPROVAL DATE</td></tr><tr><td>C</td><td>CO 3274</td><td>KR</td><td>7/18/16</td></tr></table></div>							REV	DOCUMENT	APP	APPROVAL DATE	C	CO 3274	KR	7/18/16	D
REV	DOCUMENT	APP	APPROVAL DATE												
C	CO 3274	KR	7/18/16												
<div>NOTES:</div> <div><div>1. ALL DIMENSIONS ARE IN INCHES; DIMENSIONS INSIDE [.XX] ARE IN mm, AS REFERENCE ONLY</div><div>2. MATERIALS:<div>INTERFACE SEAL: SILICONE RUBBER, COLOR BLUE</div><div>INSULATOR: 30% GLASS FILLED POLYMER, COLOR BLACK</div><div>BUSHING: BRASS ALLOY, UNPLATED 10-24 UNC THREAD</div><div>TERMINAL BLADES: 1.5 mm BRASS WITH TIN OVER NICKEL PLATING</div><div>FILTERS: FERRITE BLOCKS</div></div><div>3. ALL HEADERS ARE REFLOW OR WAVE SOLDERING PROCESS, ROHS COMPLIANT</div><div>4. SUGGESTED PCB THICKNESS: .062 [1.57]</div><div>5. IF USING FERRITE FILTER VERSION, TRACES SHOULD BE AVOIDED UNDER THE FERRITE SPACER FEET. SEE "PCB TOP SIDE PIN AREA WITH FERRITES DETAIL" - PAGE 3.</div><div>6. MATES WITH CINCH SHS PUSH-TO-SEAT HARNESS CONNECTORS (SEE TABLE ABOVE)</div><div>7. TORQUE MATING CONNECTOR SCREW TO 15 - 20 IN*LBS [1.70 - 2.26 N*m]</div></div>							B								
<div><div><div>UNITS</div><div>ENGLISH INCHES</div><div>DO NOT SCALE DRAWING</div><div>CONFIDENTIAL THIS DOCUMENT IS THE PROPERTY OF CINCH. NEITHER THIS DOCUMENT NOR ANY OF THE INFORMATION CONTAINED IN IT MAY BE DUPLICATED OR DISCLOSED WITHOUT PRIOR WRITTEN CONSENT OF CINCH. ©COPYRIGHT 2008 CINCH</div></div><div><div>DESIGN ENGINEER</div><div>A. ECKHART</div><div>DATE</div><div>9/9/08</div><div>APPROVALS ON FILE</div></div><div><div>PRO/E</div><div>CINCH</div><div>TITLE</div><div>30-WAY HEADERS MODICE ME</div><div>MATERIAL</div><div>CONTROL SPEC NUMBER</div><div>MATERIAL SPEC NUMBER</div><div>FINISH</div><div>PROJECT NUMBER</div><div>A14926</div><div>CAD FILE NUMBER</div><div>5810130064S</div><div>DRAWING NUMBER</div><div>5810130064S</div><div>CAGE IDENT NO.</div><div>71785</div><div>SIZE</div><div>B</div><div>SCALE</div><div>1:1</div><div>SHEET 1 OF 3</div></div><div><div>MODELED BY:</div><div>A. ECKHART</div><div>1700 FINLEY RD LOMBARD, IL. 60148</div></div></div>							A								
8	7	6	5	4	3	2	1								



CINCH P/N: 5810130072 SHOWN  
(HEADER WITH FILTERS)

FOR PCB MOUNTING, #4 THREAD CUTTING  
SCREW (TYPE 23 OR SIMILAR) IS RECOMMENDED;  
TORQUE TO 2-3 IN\*LBS [0.23-0.34Nm]

UNITS		CINCH		1700 FINLEY RD LOMBARD, IL. 60148		
ENGLISH INCHES						
DO NOT SCALE DRAWING		TITLE 30-WAY HEADERS MODICE ME				
		PRO/E DRAWING				
<div>CONFIDENTIAL</div> <div>THIS DOCUMENT IS THE PROPERTY OF CINCH. NEITHER THIS DOCUMENT NOR ANY OF THE INFORMATION CONTAINED IN IT MAY BE DUPLICATED OR DISCLOSED WITHOUT PRIOR WRITTEN CONSENT OF CINCH. ©COPYRIGHT 2008 CINCH</div>		CAD FILE NUMBER		DRAWING NUMBER		REV
		5810130064S		5810130064S		C
		CAGE IDENT NO.	SIZE	SCALE		
71785	B	1:1		SHEET 2 OF 3		



# Mouser Electronics

Authorized Distributor

Click to View Pricing, Inventory, Delivery & Lifecycle Information:

Cinch Connectivity Solutions:

[581-01-30-064](#) [581-01-30-072](#)