

THIS DRAWING IS UNPUBLISHED.

RELEASED FOR PUBLICATION

© COPYRIGHT - BY TYCO ELECTRONICS CORPORATION. ALL RIGHTS RESERVED.

LOC

DIST

REVISIONS

CM

0

P

LTR

DESCRIPTION

DATE

DWN

APVD

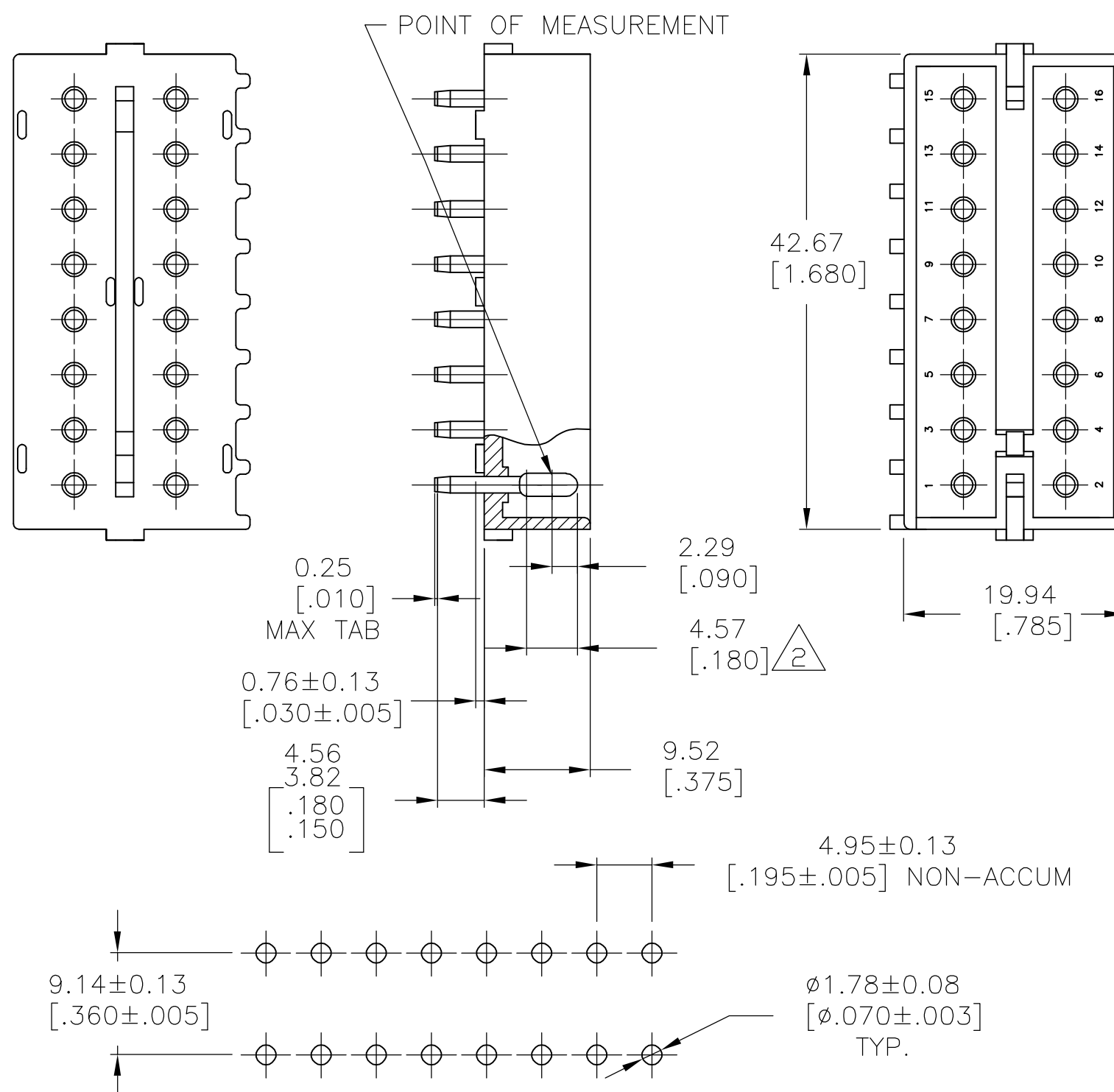
0

RELEASED PER 0G3B-1134-04

07OCT2005

APB

DC



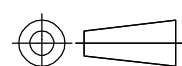
1. PARTS MUST COMPLY WITH SOLDERABILITY SPEC. 109-11-3.

2. CONTACT IS PLATED OVERALL WITH .000050 NICKEL, THEN .000030 GOLD OVER CONTACT LENGTH INDICATED AND MATTE TIN ON SOLDER TAIL END.

RECOMMENDED LAYOUT FOR
1.575[.062] THICK P.C. BOARD

METRIC

THIS DRAWING IS A CONTROLLED DOCUMENT.

DIMENSIONS:
mm [INCHES]TOLERANCES UNLESS
OTHERWISE SPECIFIED:

0 PLC ± -
1 PLC ± -
2 PLC ± -
3 PLC ± -
4 PLC ± -
ANGLES ± -

MATERIAL

SEE TABLE

FINISH

SEE TABLE

DWN
ARJUNCHK
D. COLEYAPVD
D. COLEY

PRODUCT SPEC

APPLICATION SPEC

WEIGHT

CUSTOMER DRAWING

1586522-2
ASSEMBLY NO.NYLON-NATURAL
HSG, MATL& COLORCOPPER ALLOY-GOLD
PIN MATL & FINISH

07OCT05

18OCT2005

18OCT2005

PRODUCT SPEC

APPLICATION SPEC

WEIGHT

CUSTOMER DRAWING

tyco
ElectronicsTyco Electronics Corporation
Harrisburg, PA 17105-3608

NAME

16 CIRCUIT COMMERCIAL MATE-N-LOK(TM) HEADER

SIZE

CAGE CODE

DRAWING NO

RESTRICTED TO

A3

00779

C=

1586522

SCALE

2:1

SHEET

1 OF 1

REV

0

Mouser Electronics

Authorized Distributor

Click to View Pricing, Inventory, Delivery & Lifecycle Information:

[TE Connectivity:](#)

[1586522-2](#)