



LUMILEDS LUXEON® 20mm LENSES AND HOLDERS



FEATURES / BENEFITS

- ▲ For LUXEON I
- ▲ Available in spot, medium, wide and oval lenses
- ▲ Snap-in optics
- ▲ Greater than 85% efficiency

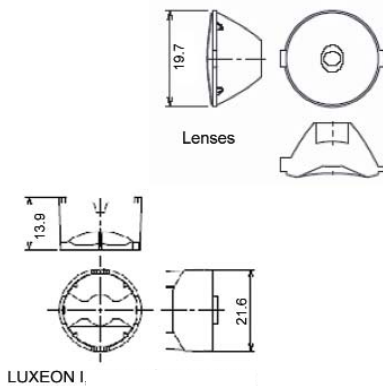
OPERATING CONDITIONS

- ▲ 105°C max temperature

MATERIALS/FINISH

- ▲ Lenses are optical grade PMMA acrylic
- ▲ Holders are made of durable polycarbonate

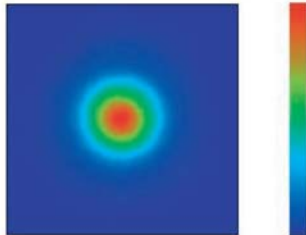
MECHANICAL DIMENSIONS



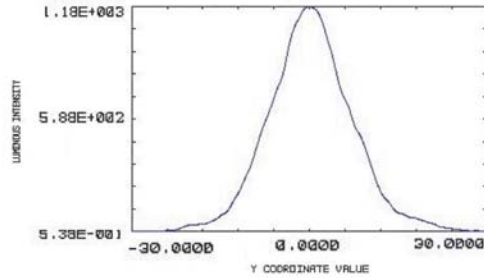
ORDERING INFORMATION

HOLDERS			
Dialight P/N	Reference P/N	Description	
OHES1WH	OH-ES1-WH	LUXEON I, III, V & Star I - Direct PCB Mount (White)	
OHES1BK	OH-ES1-BK	LUXEON I, III, V & Star I - Direct PCB Mount (Black)	
LENS			
Dialight P/N	Reference P/N	Description	Degree*
OP005	OP-005	Spot Lens	5°
OP015	OP-015	Medium Lens	15°
OP025	OP-025	Wide Lens	25°
OP520	OP-520	Oval Lens	5° X 20°
*All angles refer to half divergence			

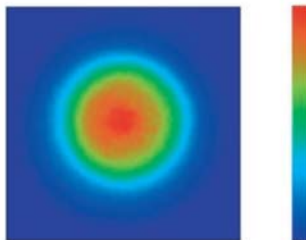
PHOTOMETRIC DATA



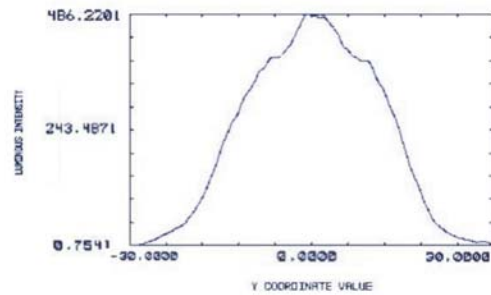
Spot Lens



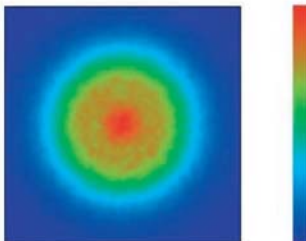
Typical half-angle divergence 5°
when using LUXEON I Cool White



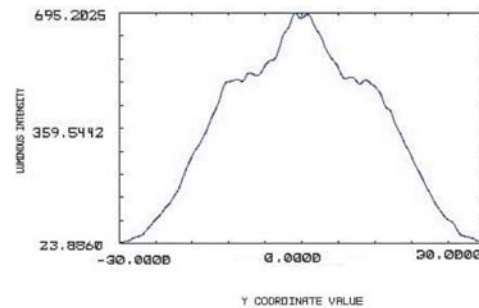
Medium Lens



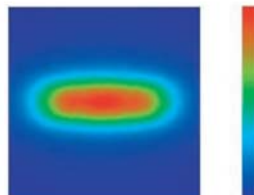
Typical half-angle divergence 15°
when using LUXEON I Cool White



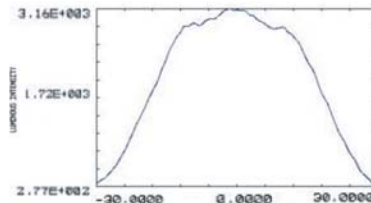
Wide Lens



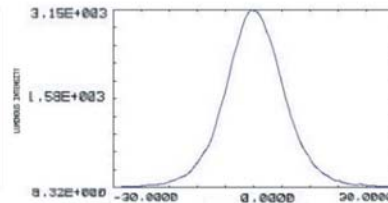
Typical half-angle divergence 25°
when using LUXEON I Cool White



Oval Lens



Horizontal



Vertical

Typ. half-angle divergence
5° X 20° LUXEON I Cool White

Dialight reserves the right to make changes at any time in order to supply the best product possible.

The most current version of this document will always be available at:

www.dialight.com/Assets/Brochures_And_Catalogs/Illumination/MDEXLUMLUX.pdf

Mouser Electronics

Authorized Distributor

Click to View Pricing, Inventory, Delivery & Lifecycle Information:

Dialight:

[OP005](#) [OHE-S1BK](#) [OHS-35WH](#) [OHE-S1WH](#) [OP015](#) [OHS-35BK](#) [OP520](#) [OP025](#) [OHS-35CL](#)