

# Customer Information Sheet

DRAWING No.: S8421-45R

SHEET 3 OF 4

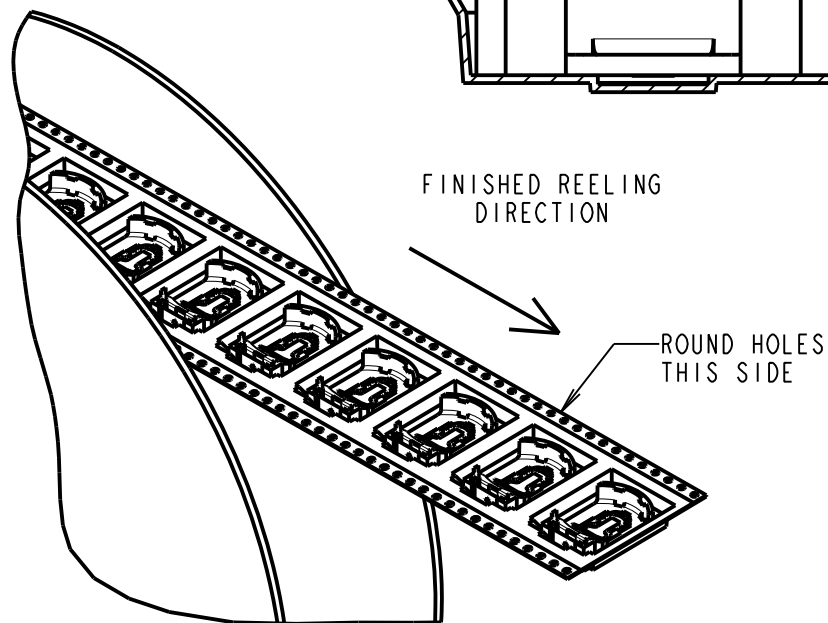
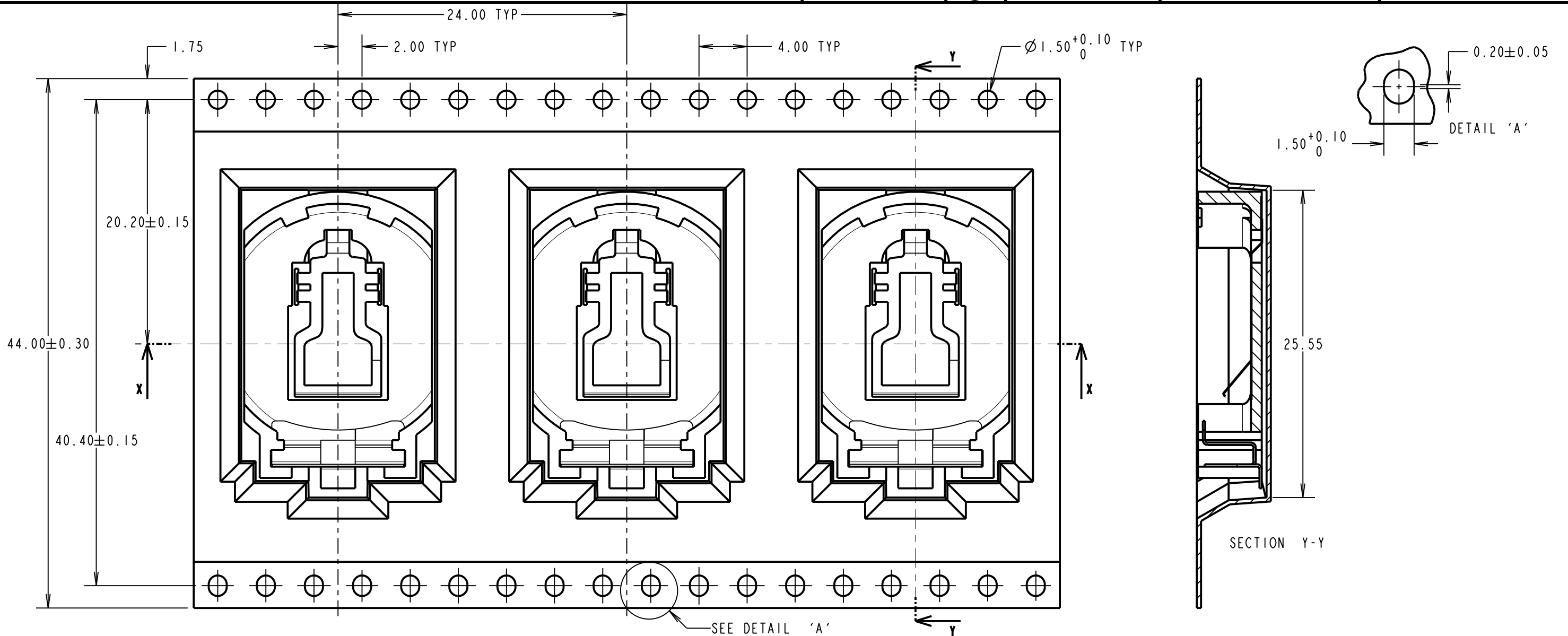
IF IN DOUBT - ASK

©

NOT TO SCALE

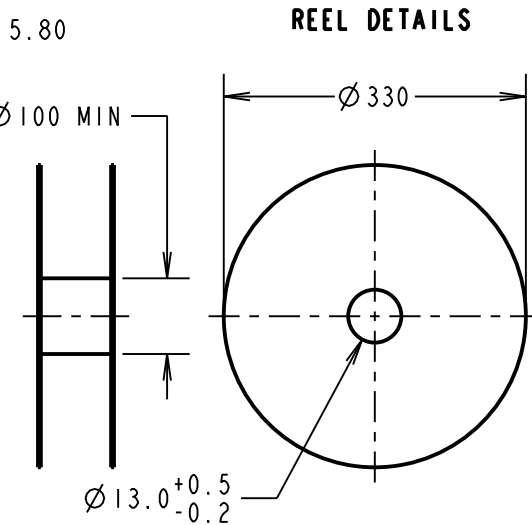
THIRD ANGLE PROJECTION

ALL DIMENSIONS IN mm



**NOTES:**

1. FOR CONNECTOR DETAILS SEE SHEET 4.
2. QUANTITY PER REEL = 500.
3. TAPE AND REELING TO BE IN ACCORDANCE WITH EIA-481 (ELECTRONIC INDUSTRIES ASSOCIATION)



SB	5	13.09.17	20792
NAME	ISS.	DATE	C/NOTE
APPROVED:		S.BENNETT	
CHECKED:		F.MCGOWAN	
DRAWN:		R.ADDE	
CUSTOMER REF.:			
ASSEMBLY DRG:			

**HARWIN**

www.harwin.com  
technical@harwin.com

THIS DRAWING AND ANY INFORMATION OR DESCRIPTIVE MATTER SET OUT HEREON ARE CONFIDENTIAL AND COPYRIGHT PROPERTY OF THE HARWIN GROUP AND MUST NOT BE DISCLOSED, LOANED, COPIED OR USED FOR MANUFACTURING, TENDERING OR FOR ANY OTHER PURPOSE WITHOUT THEIR WRITTEN PERMISSION.

TOLERANCES  
X. = ±1mm  
X.X = ±0.50mm  
X.XX = ±0.10mm  
X.XXX = ±0.01mm  
ANGLES = ±5°  
UNLESS STATED

MATERIAL:  
SEE SHEET 1  
FINISH: SEE SHEET 1  
S/AREA: mm<sup>2</sup>

TITLE:  
SMT COIN CELL HOLDER  
FOR CR2032 TAPE & REELED

DRAWING NUMBER:  
**S8421-45R**

SHT  
3  
OF  
4

# Customer Information Sheet

DRAWING No.: S8421-45R SHEET 4 OF 4

IF IN DOUBT - ASK

(C)

NOT TO SCALE

THIRD ANGLE PROJECTION

ALL DIMENSIONS IN mm

**SPECIFICATIONS:**

**MATERIAL:**

MOULDING: PPS 30% G/F, UL94V-0, BROWN

CONTACT: PHOSPHOR BRONZE

**FINISH:**

CONTACTS = GOLD

**ELECTRICAL:**

CONTACT RESISTANCE = 12mΩ

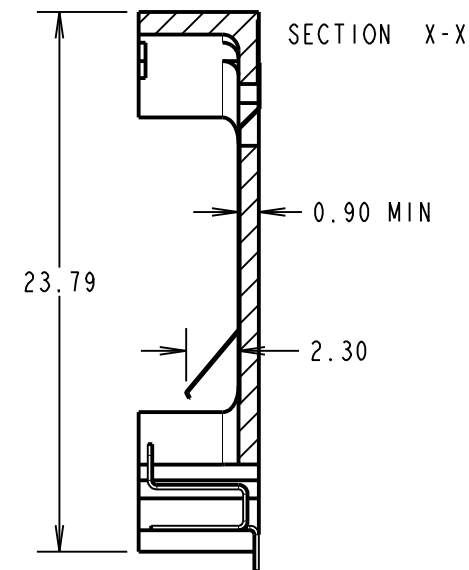
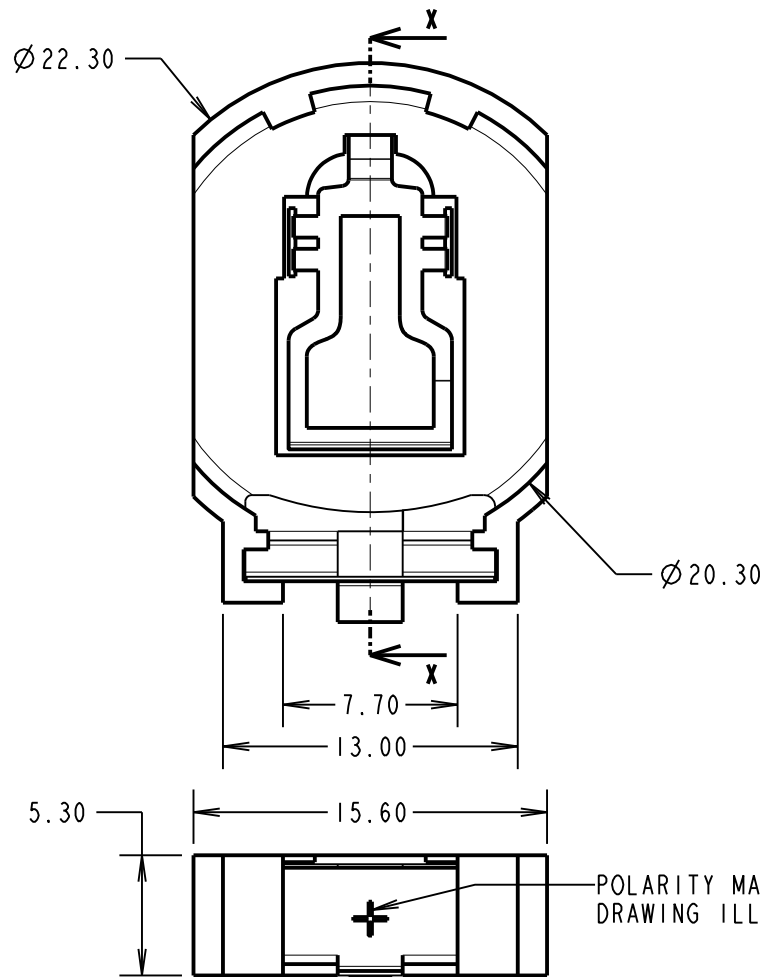
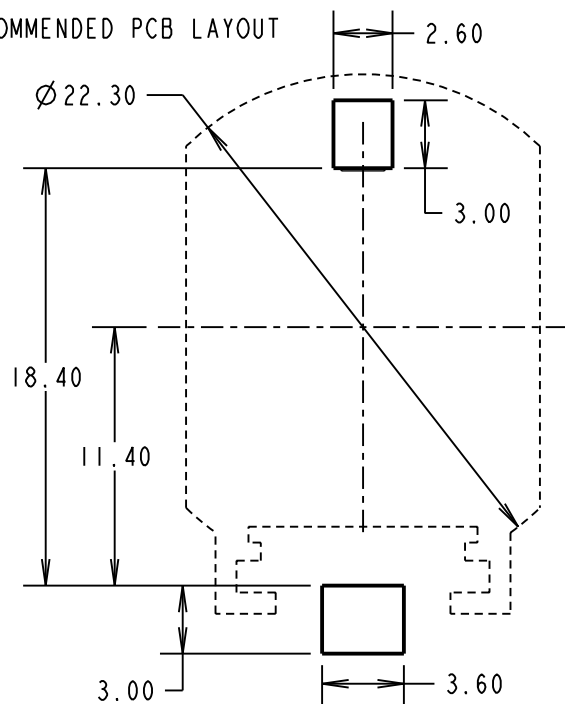
INSULATION RESISTANCE = 500MΩ

DIELECTRIC VOLTAGE = 500V AC FOR 1 MINUTE

**ENVIRONMENTAL:**

OPERATING TEMPERATURE = -40°C TO +105°C

**RECOMMENDED PCB LAYOUT**



POLARITY MARKING, FOR DRAWING ILLUSTRATION ONLY

**NOTES:**

- SUITABLE FOR THE FOLLOWING COIN CELL: CR2032.
- ALL TOLERANCES ARE ±0.20 UNLESS OTHERWISE STATED.

SB	5	13.09.17	20792
NAME	ISS.	DATE	C/NOTE
APPROVED:		S.BENNETT	
CHECKED:		F.MCGOWAN	
DRAWN:		R.ADDE	
CUSTOMER REF.:			
ASSEMBLY DRG:			

**HARWIN**

www.harwin.com  
technical@harwin.com

THIS DRAWING AND ANY INFORMATION OR DESCRIPTIVE MATTER SET OUT HEREON ARE CONFIDENTIAL AND COPYRIGHT PROPERTY OF THE HARWIN GROUP AND MUST NOT BE DISCLOSED, LOANED, COPIED OR USED FOR MANUFACTURING, TENDERING OR FOR ANY OTHER PURPOSE WITHOUT THEIR WRITTEN PERMISSION.

**TOLERANCES**  
~~% = ±1mm  
 X.X = ±0.50mm  
 X.XX = ±0.10mm  
 X.XXX = ±0.01mm  
 ANGLES = ±5°  
 UNLESS STATED~~

**MATERIAL:**

SEE ABOVE

**FINISH:**

SEE ABOVE

**S/AREA:**

mm<sup>2</sup>

**TITLE:**

COIN CELL HOLDER  
FOR CR2032

**DRAWING NUMBER:**

**S8421-45R**

SHT  
4  
OF  
4