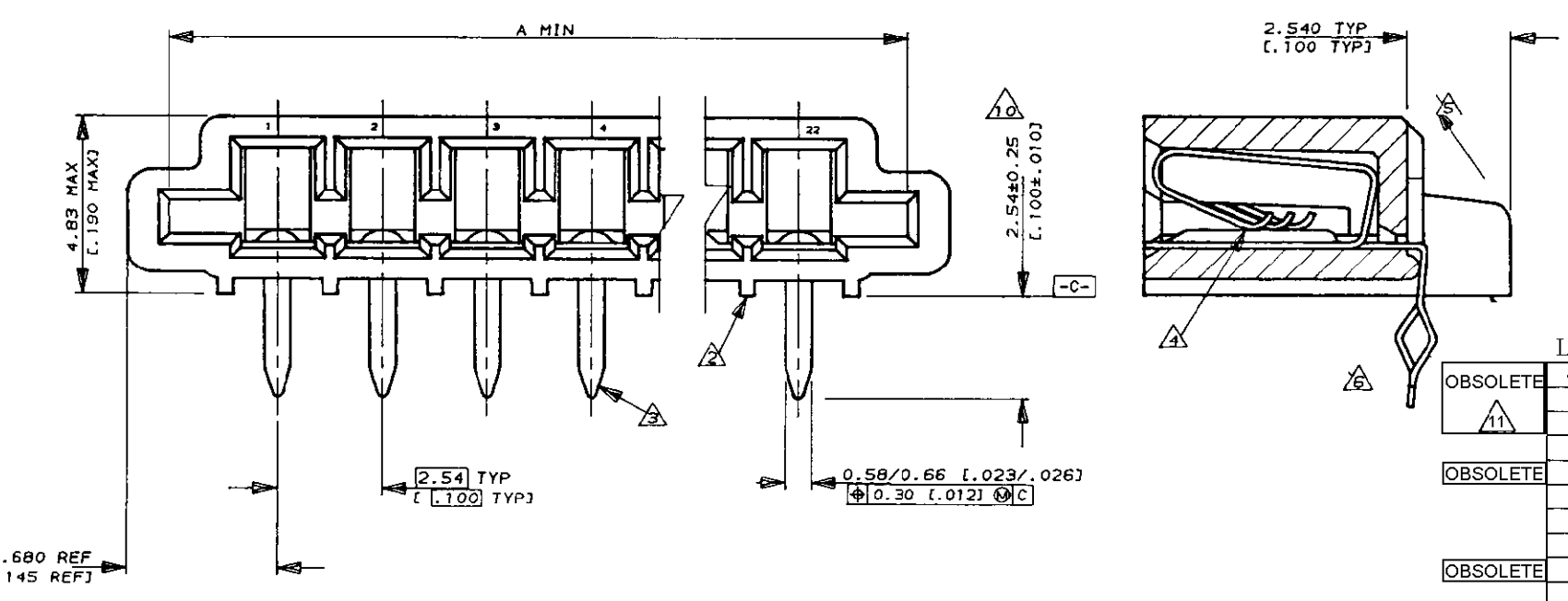
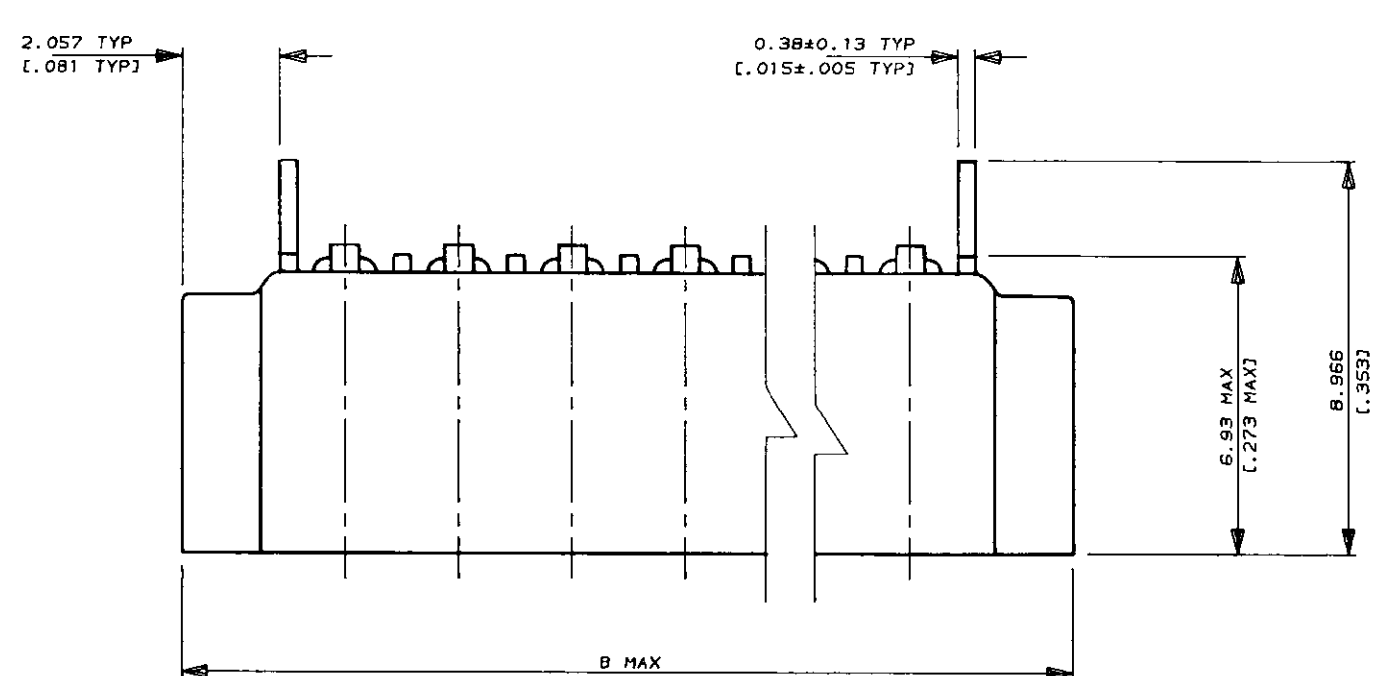


NUMBER 520314
 METRIC
 DIMENSIONS IN MM (INCHES). DO NOT SCALE PRINT
 PRINT DIST



- NOTES**
- CONNECTOR WILL ACCEPT FLEXIBLE PRINTED CIRCUIT OR FLAT FLEXIBLE CABLE ON 2.54 [0.100] CENTERS IN A THICKNESS RANGE OF 0.127 TO 0.381 [0.005 TO 0.015] IN CONTACT AREA
 - STAND-OFFS PREVENT SOLVENT ENTRAPMENT
 - LEAD-IN ON PINS FOR EASE OF INSERTION INTO BOARD
 - SEQUENTIAL CONTACTS REDUCE CABLE INSERTION FORCE
 - STABILIZING WING MAY BE REMOVED BY CUSTOMER IF NECESSARY
 - ALTERNATING CONTACT FORM RETAINS CONNECTOR IN P.C. BOARD DURING SOLDER OPERATION
 - ACCEPTS CABLE OR CIRCUITRY WITH EXPOSED CONDUCTORS FACING TOWARD OR AWAY FROM THE BOARD SURFACE
 - REFER TO APPLICATION SPEC 114-2062
 - MATERIAL
HOUSING : GLASS REINFORCED POLYESTER
THERMOPLASTIC UL 94 VO RATED, BLACK
CONTACT : PHOS BRONZE WITH MATTE TIN FINISH.
 - AREA INDICATED SHALL MEET SOLDERABILITY SPEC 109-11-1
 - OBsolete PARTS: OBsolete CIS STREAMLINING PER D.RENAUD/D.SINISI

		LEAD FREE				SUPERSEDED	
OBsolete	Part No	Length	Width	Height	Pos	Part No	
OBsolete	520314-2	60.78 [2.393]	58.62 [2.308]	22	2	2-520314-2	
OBsolete	520314-1	58.24 [2.293]	56.08 [2.208]	21	2	2-520314-1	
OBsolete	520314-0	55.70 [2.193]	53.54 [2.108]	20	2	2-520314-0	
	6-520314-9	53.16 [2.093]	51.00 [2.008]	19	1	1-520314-9	
OBsolete	520314-8	50.62 [1.993]	48.46 [1.908]	18	1	1-520314-8	
	6-520314-7	48.08 [1.893]	45.92 [1.808]	17	1	1-520314-7	
	6-520314-6	45.54 [1.793]	43.38 [1.708]	16	1	1-520314-6	
	6-520314-5	43.00 [1.693]	40.84 [1.608]	15	1	1-520314-5	
OBsolete	520314-4	40.46 [1.593]	38.30 [1.508]	14	1	1-520314-4	
	6-520314-3	37.92 [1.493]	35.76 [1.408]	13	1	1-520314-3	
	6-520314-2	35.38 [1.393]	33.22 [1.308]	12	1	1-520314-2	
	6-520314-1	32.84 [1.293]	30.68 [1.208]	11	1	1-520314-1	
	6-520314-0	30.30 [1.193]	28.14 [1.108]	10	1	1-520314-0	
	5-520314-9	27.76 [1.093]	25.60 [1.008]	9		520314-9	
	5-520314-8	25.22 [0.993]	23.06 [0.908]	8		520314-8	
	5-520314-7	22.68 [0.893]	20.52 [0.808]	7		520314-7	
	5-520314-6	20.14 [0.793]	17.98 [0.708]	6		520314-6	
	5-520314-5	17.60 [0.693]	15.44 [0.608]	5		520314-5	
	5-520314-4	15.06 [0.593]	12.90 [0.508]	4		520314-4	
OBsolete	520314-3	12.52 [0.493]	10.36 [0.408]	3		520314-3	
	5-520314-2	9.98 [0.393]	7.82 [0.308]	2		520314-2	

		PART NO		PACKING		B		A		POS		PART NO		
S3	ECR-10-022530	KK	HMR	07FEB11	Copyright ©1993		Copyright ©1993		TE MFG (S) PTE LTD.		ALL RIGHTS RESERVED.		TE Connectivity	
S2	ECO-10-000445	KK	AEG	11JAN10	(WIRE RANGE)	(INSULATION DIA.)	(NAME)		TRIOMATE HORIZONTAL CABLE ENTRY		FOR 1.57 [0.062] THK P.C. BOARD			
S1	REVISED AS PER ECR-06-04332	PM	KS	21FEB06	mm ² (AWG -)	mmØ								
S	REVISED FRO00-0011-04	SD	PCH	19FEB04	(MATERIAL)	(FINISH) CONTACTS								
R	REVISED DY/EC/0920	LWY	SL	13.12.93		MATTE TIN/LEAD PLATED								
Q	REDRAWN DY/EC/0784	LWY	SL	30.7.93	DR. WYLEE 30.7.93	DE. A.SOH								
LTR	(REVISION RECORD)	DR	CHK	DATE	CHK. SALLY 30.7.93	APP. PETER de JONG								

(CUSTOMER DRAWING)

Mouser Electronics

Authorized Distributor

Click to View Pricing, Inventory, Delivery & Lifecycle Information:

[TE Connectivity:](#)

[5-520314-7](#)