

THIS DRAWING IS UNPUBLISHED.

RELEASED FOR PUBLICATION

© COPYRIGHT

ALL RIGHTS RESERVED.

| LOC | DIST | REVISIONS |     |                              |         |
|-----|------|-----------|-----|------------------------------|---------|
|     |      | P         | LTR | DESCRIPTION                  | DATE    |
| J   | -    |           |     | C1 REVISED PER ECO-11-005030 | 26APR11 |
|     |      |           |     |                              | RK      |
|     |      |           |     |                              | HMR     |

1473562-4: AS SHOWN  
1473562-4: 本図

注記  
1. 材料: PLUG HOUSING: ガラス入り熱可塑性ポリエステル樹脂 94V-0 黒  
HOLD HOUSING: ポリカーボネイト 94V-0 黄色: 0-、赤色: 1-、青色: 2-  
コンタクト: 銅合金

2. メッキ: 全面Ni下地: 1.27μm以上  
接点部: 0.2μm MIN 金メッキ

3. -5(5POS)と-7(7POS)は、回路番号6と8にコンタクトが装着されません

NOTE

1. MATERIAL: PLUG HOUSING: GLASS FILLED THERMOPLASTIC, 94V-0, BLACK  
HOLD HOUSING: PC, 94V-0, YELLOW: 0-, RED: 1-, BLUE: 2-  
CONTACT: COPPER ALLOY

2. FINISH: UNDERPLATE: Ni 1.27μm min  
CONTACT AREA: Au 0.2μm min

3. X--5(5POS) AND X--7(7POS) DO NOT EQUIP WITH CONTACT OF CIRCUIT NO 6 AND 8.

|                |       |      |    |      |   |     |               |
|----------------|-------|------|----|------|---|-----|---------------|
| BLUE           | 20.35 | 17.2 | 14 | 24.1 | 7 | 8   | 2-1473562-8   |
| RED            | 20.35 | 17.2 | 14 | 24.1 | 7 | 8   | 1-1473562-8   |
| YELLOW         | 20.35 | 17.2 | 14 | 24.1 | 7 | 8   | 1473562-8     |
| BLUE           | 20.35 | 17.2 | 14 | 24.1 | 7 | 7   | 3 2-1473562-7 |
| RED            | 20.35 | 17.2 | 14 | 24.1 | 7 | 7   | 3 1-1473562-7 |
| YELLOW         | 20.35 | 17.2 | 14 | 24.1 | 7 | 7   | 3 1473562-7   |
| BLUE           | 16.35 | 13.2 | 10 | 20.1 | 5 | 6   | 2-1473562-6   |
| RED            | 16.35 | 13.2 | 10 | 20.1 | 5 | 6   | 1-1473562-6   |
| YELLOW         | 16.35 | 13.2 | 10 | 20.1 | 5 | 6   | 1473562-6     |
| BLUE           | 16.35 | 13.2 | 10 | 20.1 | 5 | 5   | 3 2-1473562-5 |
| RED            | 16.35 | 13.2 | 10 | 20.1 | 5 | 5   | 3 1-1473562-5 |
| YELLOW         | 16.35 | 13.2 | 10 | 20.1 | 5 | 5   | 3 1473562-5   |
| BLUE           | 12.35 | 9.2  | 6  | 16.1 | 3 | 4   | 2-1473562-4   |
| RED            | 12.35 | 9.2  | 6  | 16.1 | 3 | 4   | 1-1473562-4   |
| YELLOW         | 12.35 | 9.2  | 6  | 16.1 | 3 | 4   | 1473562-4     |
| BLUE           | 10.35 | 7.2  | 4  | 14.1 | 2 | 3   | 2-1473562-3   |
| RED            | 10.35 | 7.2  | 4  | 14.1 | 2 | 3   | 1-1473562-3   |
| YELLOW         | 10.35 | 7.2  | 4  | 14.1 | 2 | 3   | 1473562-3     |
| HOLD HSG COLOR | D     | C    | B  | A    | N | POS | PART NUMBER   |

<Table of Insulation Dia (Cable suitable for e-CON.)>  
<被覆外径一覧表(e-CON 適応電線)>

|                |                |             |             |
|----------------|----------------|-------------|-------------|
| ORANGE         | φ0.60~0.90     | 3-1473562-□ | SEE SHEET 3 |
| RED            | φ0.90~1.00     | 1-1473562-□ | SEE SHEET 1 |
| YELLOW         | φ1.00~1.15     | 1473562-□   | SEE SHEET 1 |
| BLUE           | φ1.15~1.35     | 2-1473562-□ | SEE SHEET 1 |
| GUREEN         | φ1.35~1.60     | 4-1473562-□ | SEE SHEET 2 |
| HOLD HSG COLOR | INSULATION DIA | PART NUMBER | SHEET No    |

|                         |  |   |  |  |  |  |
|-------------------------|--|---|--|--|--|--|
| DIMENSIONS:<br>単位: mm   |  | TOLERANCES UNLESS OTHERWISE SPECIFIED:<br>一般公差<br>0 PLC ±0.2<br>1 PLC ±0.2<br>2 PLC ±3°<br>3 PLC ±<br>4 PLC ±<br>ANGLES ± |  | DWN D. MITSUGI 10SEP2001<br>CHK S. MANABE 10SEP2001<br>APVD S. MANABE 10SEP2001<br>PRODUCT SPEC 108-5765<br>APPLICATION SPEC<br>WEIGHT - | WIRE RANGE<br>適合電線断面積 SEE 108-5765<br>INSULATION DIA<br>被覆外径 |  |
| MATERIAL<br>材料 SEE NOTE |  | FINISH<br>仕上 SEE NOTE   |  | TE Connectivity  |  |  |
| CUSTOMER DRAWING        |  | SCALE<br>尺度 4:1   |  | SHEET 1 OF 3   |  |  |
| REV C1                  |  | REV C1  |  | REV C1   |  |  |

取扱説明書 (Instruction Sheet): 411-78014

THIS DRAWING IS UNPUBLISHED.

RELEASED FOR PUBLICATION

© COPYRIGHT

ALL RIGHTS RESERVED.

LOC  
JDIST  
-

REVISIONS

変更

P

LTR

DESCRIPTION

DATE

DWN

APVD

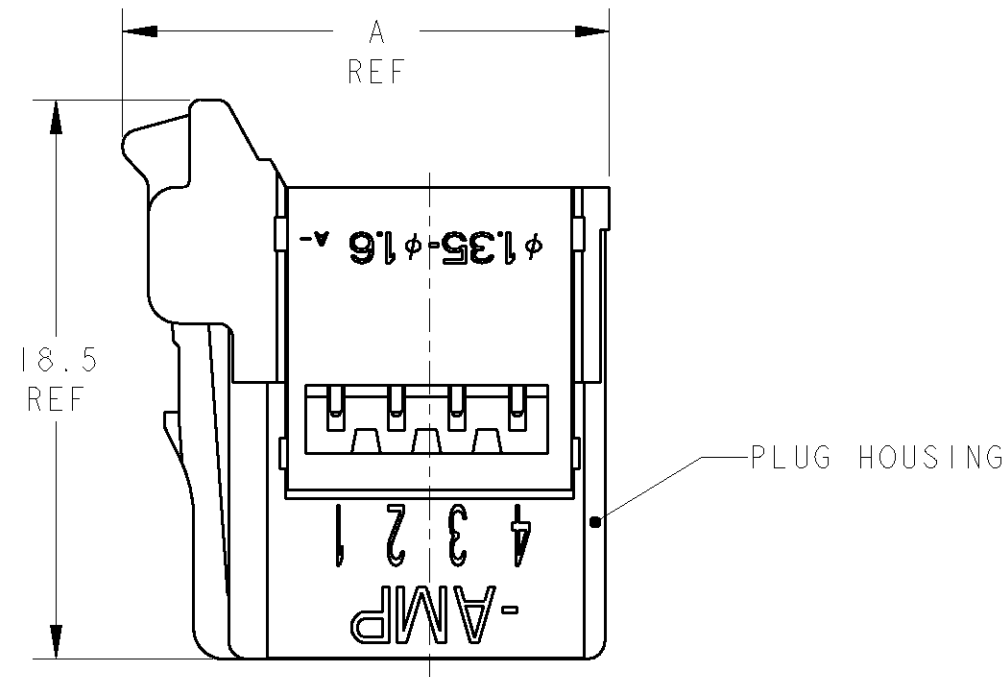
-

SEE SHEET 1

-

-

-

4-1473562-4:AS SHOWN  
4-1473562-4:本図

PLUG HOUSING

① 材料 PLUG HOUSING: ガラス入り熱可塑性ポリエステル樹脂 94V-0 黒  
HOLD HOUSING: ポリカーボネイト 94V-0 緑色: 4-  
コンタクト: 銅合金

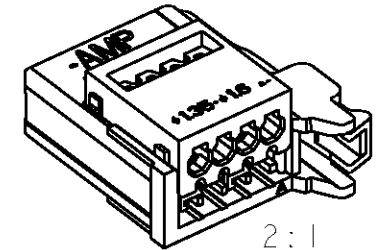
② 仕上げ 全面: ニッケルメッキ下地 1.27μm以上  
接点部: 金メッキ 0.2μm以上

③ -5(5POS)と-7(7POS)は、回路番号6と8にコンタクトが装着されません

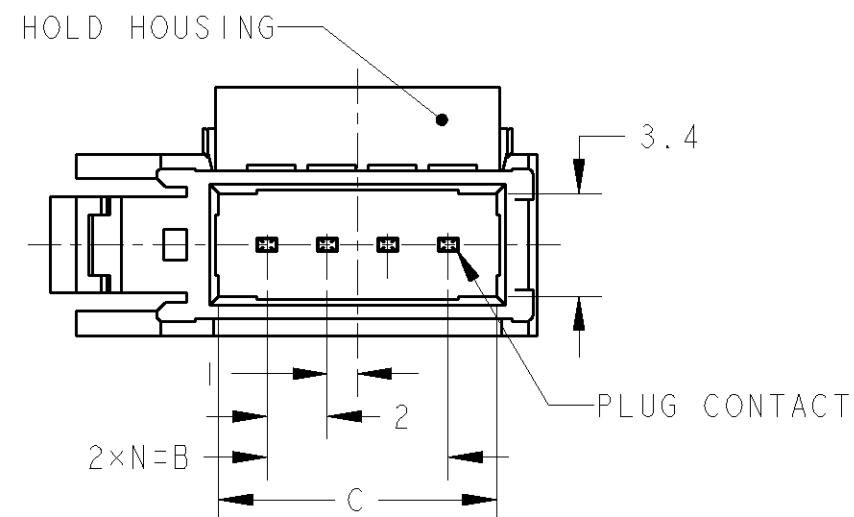
① MATERIAL PLUG HOUSING: GLASS FILLED THERMOPLASTIC, 94V-0, BLACK  
HOLD HOUSING: PC, 94V-0, GREEN: 4-  
CONTACT: COPPER ALLOY

② FINISH UNDERPLATE: Ni PLATING ALL SURFACE 1.27μm MIN  
CONTACT AREA: Au PLATING 0.2μm MIN

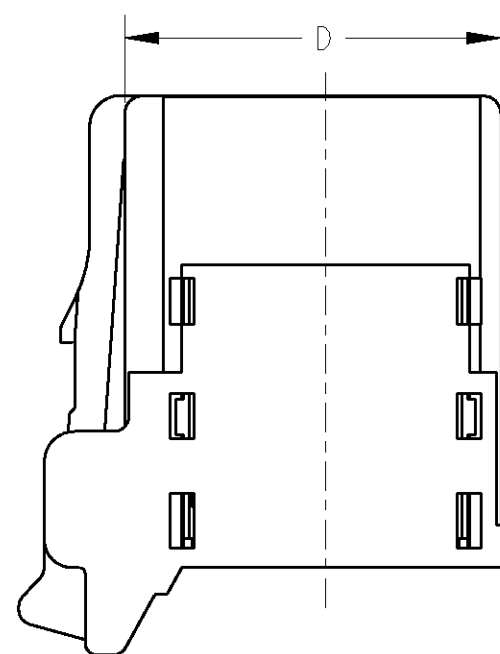
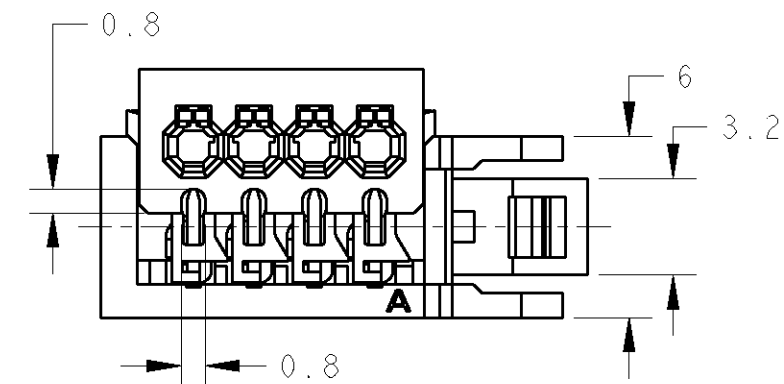
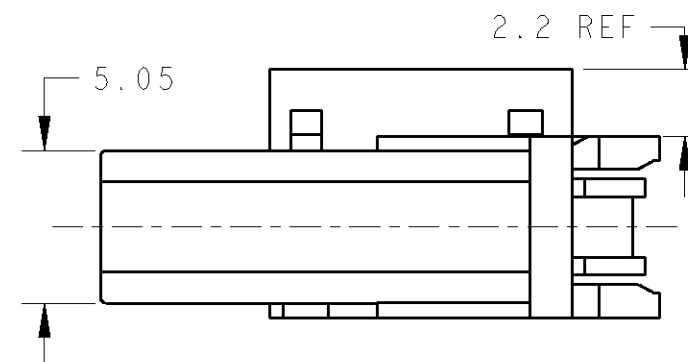
③ -5(5POS) AND -7(7POS) DO NOT EQUIP WITH CONTACT OF CIRCUIT NO 6 AND 8.



2:1


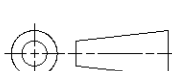


PLUG CONTACT



取扱説明書 (Instruction Sheet): 411-78014

|                |       |      |    |      |   |      |              |
|----------------|-------|------|----|------|---|------|--------------|
| GREEN          | 20.35 | 17.2 | 14 | 24.1 | 7 | 8    | 4-1473562-8  |
|                | 20.35 | 17.2 | 14 | 24.1 | 7 | 7    | ③4-1473562-7 |
|                | 16.35 | 13.2 | 10 | 20.1 | 5 | 6    | 4-1473562-6  |
|                | 16.35 | 13.2 | 10 | 20.1 | 5 | 5    | ③4-1473562-5 |
|                | 12.35 | 9.2  | 6  | 16.1 | 3 | 4    | 4-1473562-4  |
|                | 10.35 | 7.2  | 4  | 14.1 | 2 | 3    | 4-1473562-3  |
| HOLD HSG COLOR | D     | C    | B  | A    | N | POS. | PART NUMBER  |

|   |  |   |  |   |  |  |  |
|---|--|---|--|---|--|--|--|
|   |  | DWN<br>K. RIKU 26DEC02                    |  |  TE Connectivity |  |  |  |
|   |  | CHK<br>D. MITSUGI 26DEC02                 |  |   |  |  |  |
| DIMENSIONS:<br>単位: 概<br>mm  |  | TOLERANCES UNLESS<br>OTHERWISE SPECIFIED: |  | APVD<br>S. MANABE 26DEC02   |  | NAME<br>名称<br>PLUG ASSY<br>FOR e-CON<br>- RITS CONN. - |  |
|  |  | 一般公差                                      |  |   |  |  |  |
|   |  | 0 PLC ± ±0.2                              |  |   |  |  |  |
|   |  | 1 PLC ± ±0.2                              |  |   |  |  |  |
|   |  | 2 PLC ± ±3°                               |  | PRODUCT SPEC<br>製品規格<br>108-5765  |  |  |  |
|   |  | 3 PLC ± ±3°                               |  | APPLICATION SPEC<br>取付適用規格<br>-   |  | SIZE   |  |
|   |  | 4 PLC ± ±                                 |  |   |  | CAGE CODE  |  |
|   |  | ANGLES ±                                  |  |   |  | DRAWING NO<br>番号<br>C-1473562                          |  |
| MATERIAL<br>材料<br>① SEE NOTE  |  | FINISH<br>仕上<br>② SEE NOTE                |  | WEIGHT<br>-   |  | RESTRICTED TO<br>-                                     |  |
| CUSTOMER DRAWING  |  |   |  | SCALE<br>尺度 3:1   |  | SHEET 2 OF 3   |  |
|   |  |   |  |   |  | REV C1   |  |

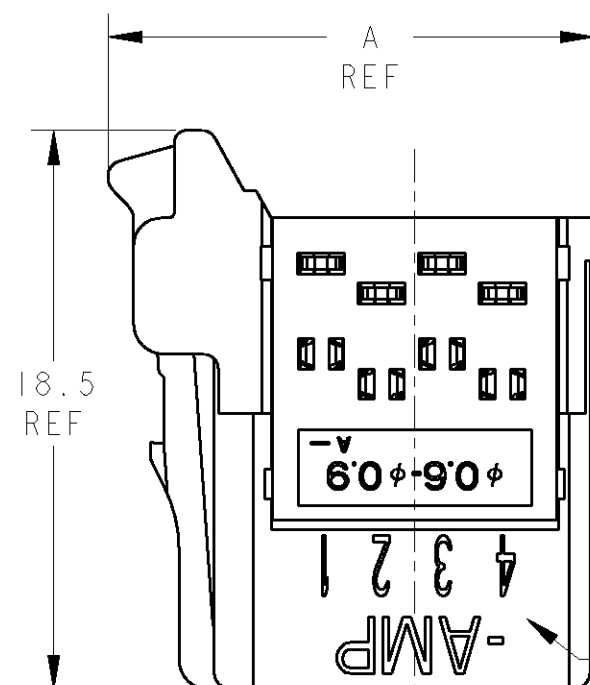
THIS DRAWING IS UNPUBLISHED.

RELEASED FOR PUBLICATION

© COPYRIGHT

ALL RIGHTS RESERVED.

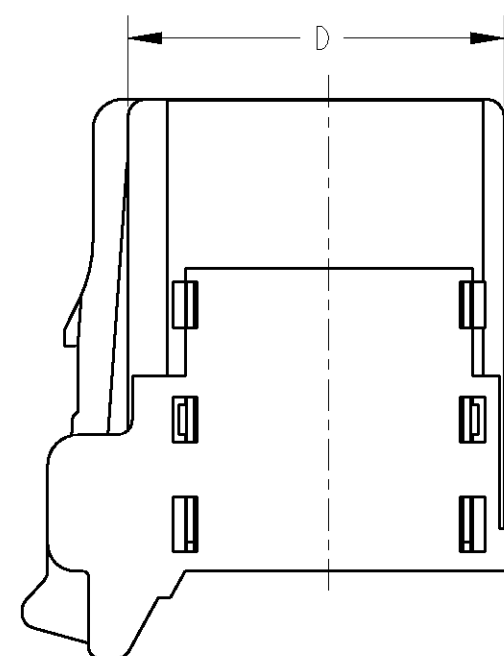
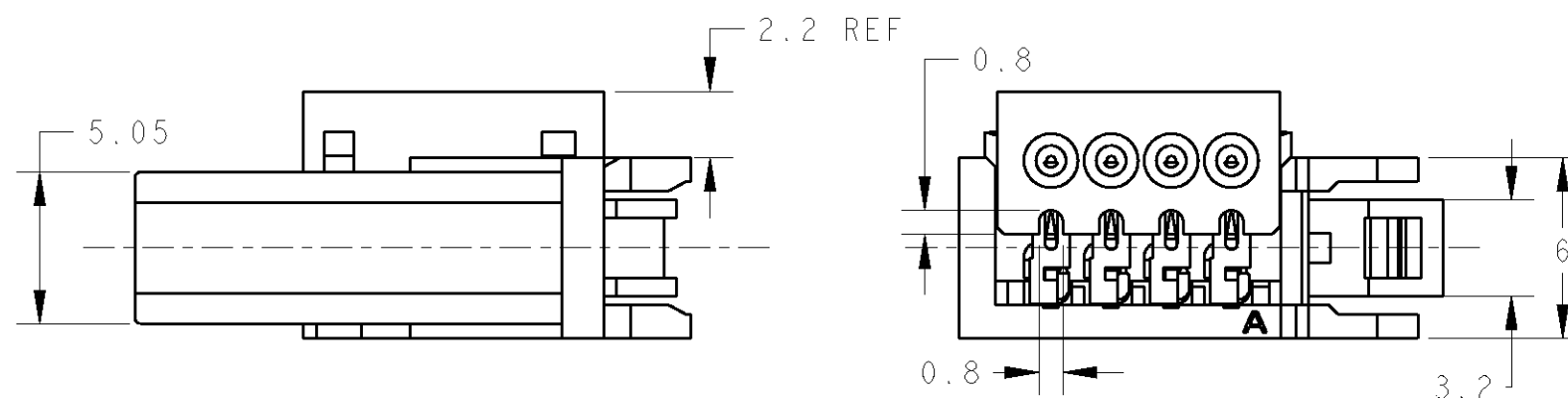
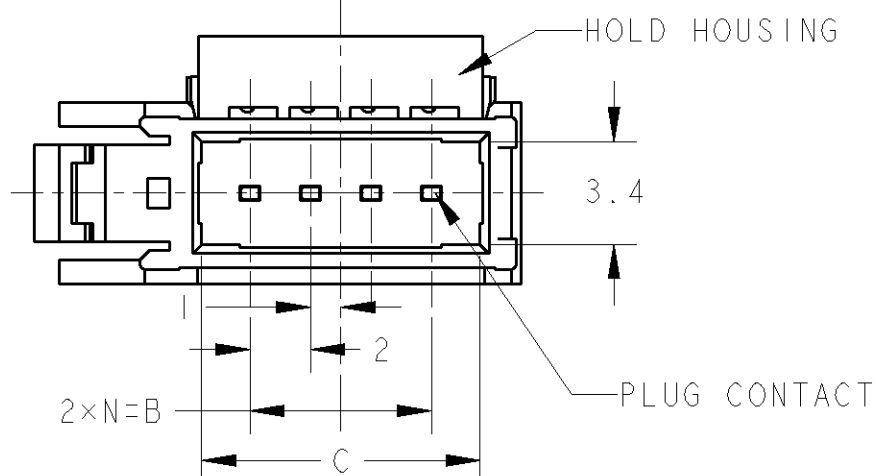
| LOC | DIST | REVISIONS |     |             |      |          |
|-----|------|-----------|-----|-------------|------|----------|
|     |      | P         | LTR | DESCRIPTION | DATE | DWN APVD |
| J   | -    |           |     | SEE SHEET 1 |      |          |



3-1473562-4 : AS SHOWN  
3-1473562-4 : 本図

- ① 材料: PLUG HOUSING : ガラス入り熱可塑性ポリエステル樹脂 94V-0 黒  
HOLD HOUSING : ポリカーボネイト 94V-0 オレンジ色: 3-  
コンタクト: 銅合金
- ② メッキ: 全面ニッケル下地: 1.27μm以上  
接点部: 金メッキ: 0.2μm以上
- ③ -5(5POS)と-7(7POS)は、回路番号6と8にコンタクトが装着されません。

- ① MATERIAL: PLUG HOUSING : GLASS FILLED THERMOPLASTIC, 94V-0, BLACK  
HOLD HOUSING : PC, 94V-0, ORANGE: 3-  
CONTACT : COPPER ALLOY
- ② FINISH: UNDERPLATE : Ni 1.27μm MIN  
CONTACT AREA : Au 0.2μm MIN
- ③ -5(5POS) AND -7(7POS) DO NOT EQUIP WITH CONTACT OF CIRCUIT No. 6 & 8.



取扱説明書 (Instruction Sheet): 411-78010

|                |       |      |    |      |   |      |             |
|----------------|-------|------|----|------|---|------|-------------|
| ORANGE         | 20.35 | 17.2 | 14 | 24.1 | 7 | 8    | 3-1473562-8 |
|                | 20.35 | 17.2 | 14 | 24.1 | 7 | 7    | 3-1473562-7 |
|                | 16.35 | 13.2 | 10 | 20.1 | 5 | 6    | 3-1473562-6 |
|                | 16.35 | 13.2 | 10 | 20.1 | 5 | 5    | 3-1473562-5 |
|                | 12.35 | 9.2  | 6  | 16.1 | 3 | 4    | 3-1473562-4 |
|                | 10.35 | 7.2  | 4  | 14.1 | 2 | 3    | 3-1473562-3 |
| HOLD HSG COLOR | D     | C    | B  | A    | N | POS. | PART NUMBER |

|                            |  |   |  |                                  |  |                 |           |
|----------------------------|--|---|--|----------------------------------|--|-----------------|-----------|
| DIMENSIONS:<br>単位: 概<br>mm |  | TOLERANCES UNLESS<br>OTHERWISE SPECIFIED: |  | DWN<br>S. YOKOZEKI<br>21 JAN '03 | TE Connectivity                                  |                 |           |
|                            |  |   |  | CHK<br>D. MITSUGI<br>30 JAN '03  |  |                 |           |
|                            |  |   |  | APVD<br>S. MANABE<br>30 JAN '03  | NAME<br>PLUG ASSY<br>FOR e-CON<br>- RITS CONN. - |                 |           |
|                            |  |   |  | PRODUCT SPEC<br>製品規格<br>108-5765 |  |                 |           |
|                            |  |   |  | APPLICATION SPEC<br>取付適用規格<br>-  | SIZE<br>A3                                       |                 |           |
| MATERIAL<br>材料             |  | FINISH<br>仕上                              |  | WEIGHT<br>-                      |  |                 |           |
| SEE NOTE<br>①              |  | SEE NOTE<br>②                             |  | CUSTOMER DRAWING                 | SCALE<br>尺度 4:1                                  | SHEET<br>3 OF 3 | REV<br>C1 |

# Mouser Electronics

Authorized Distributor

Click to View Pricing, Inventory, Delivery & Lifecycle Information:

[TE Connectivity:](#)

[1-1473562-6](#)