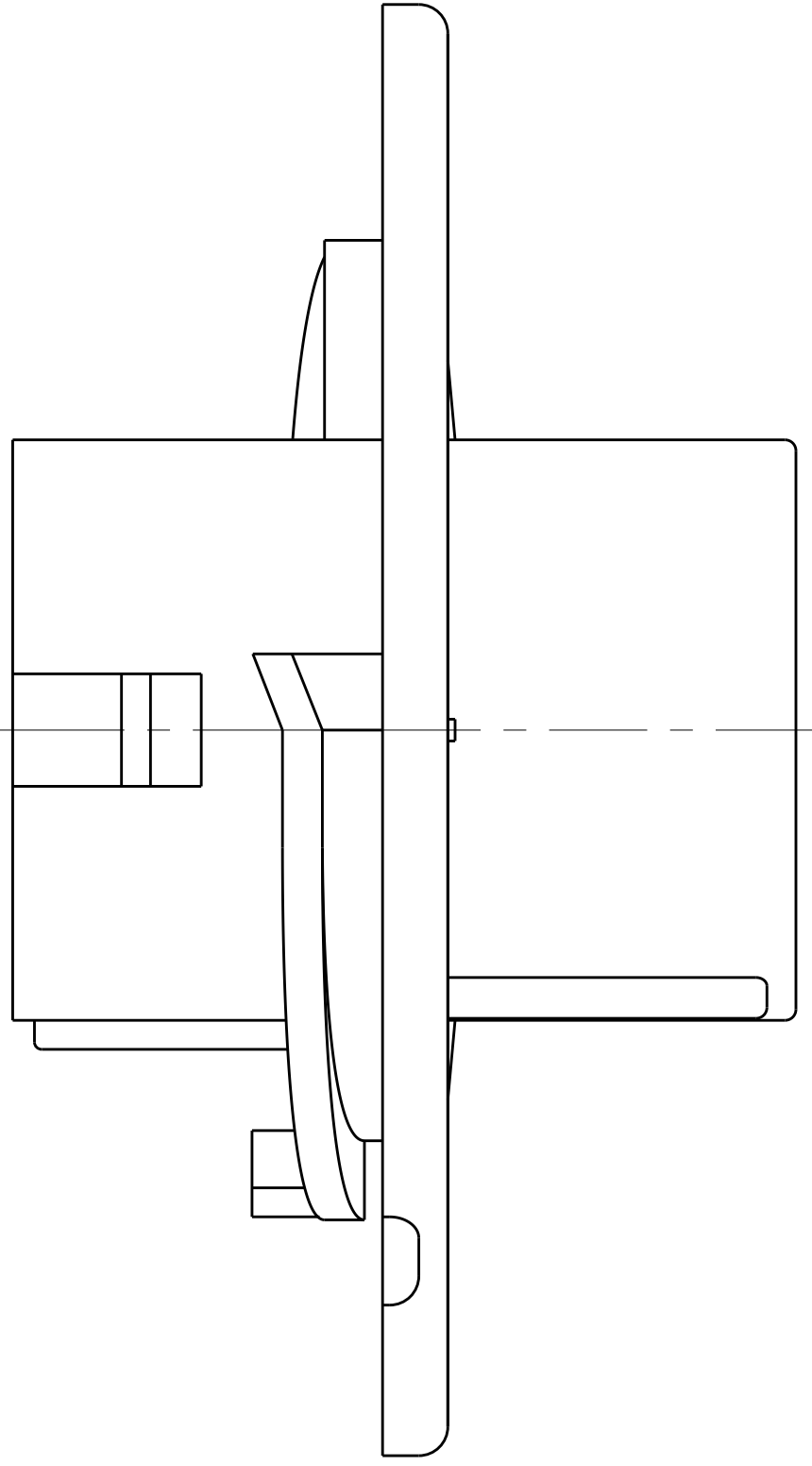
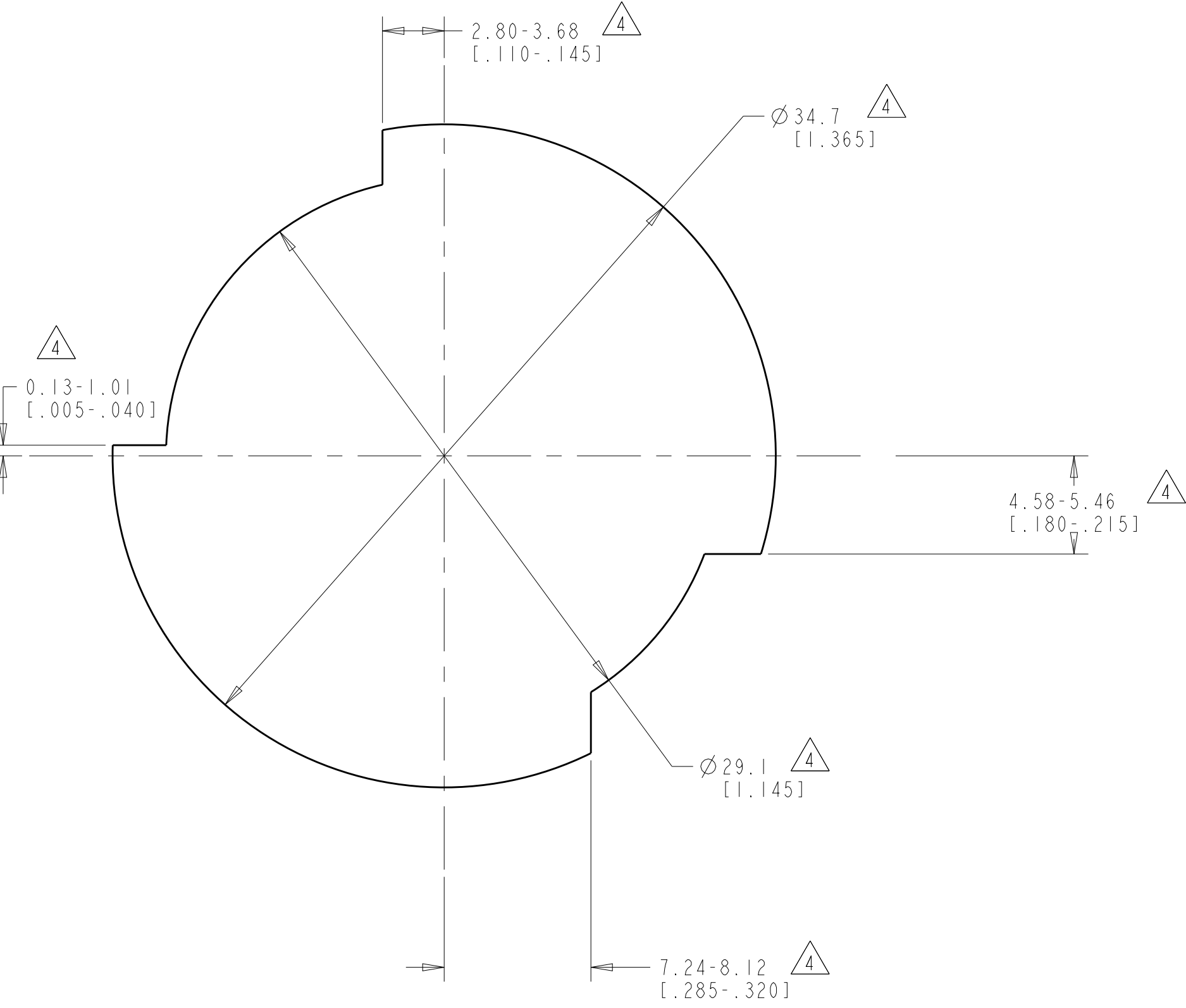
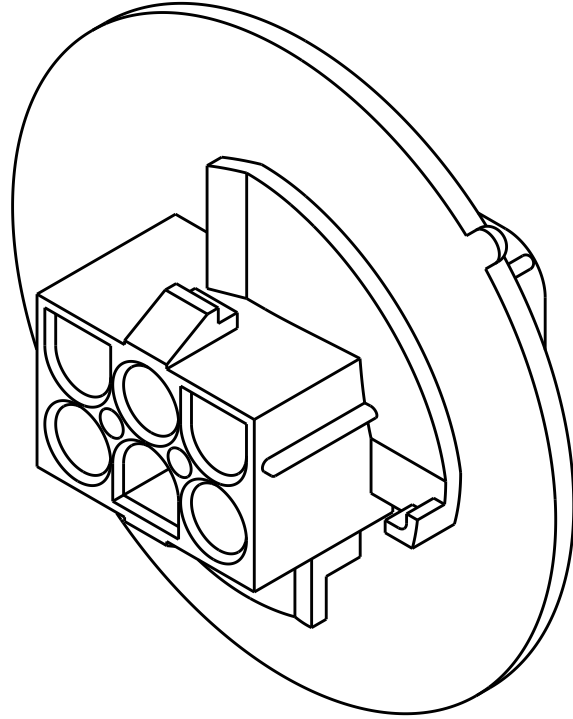
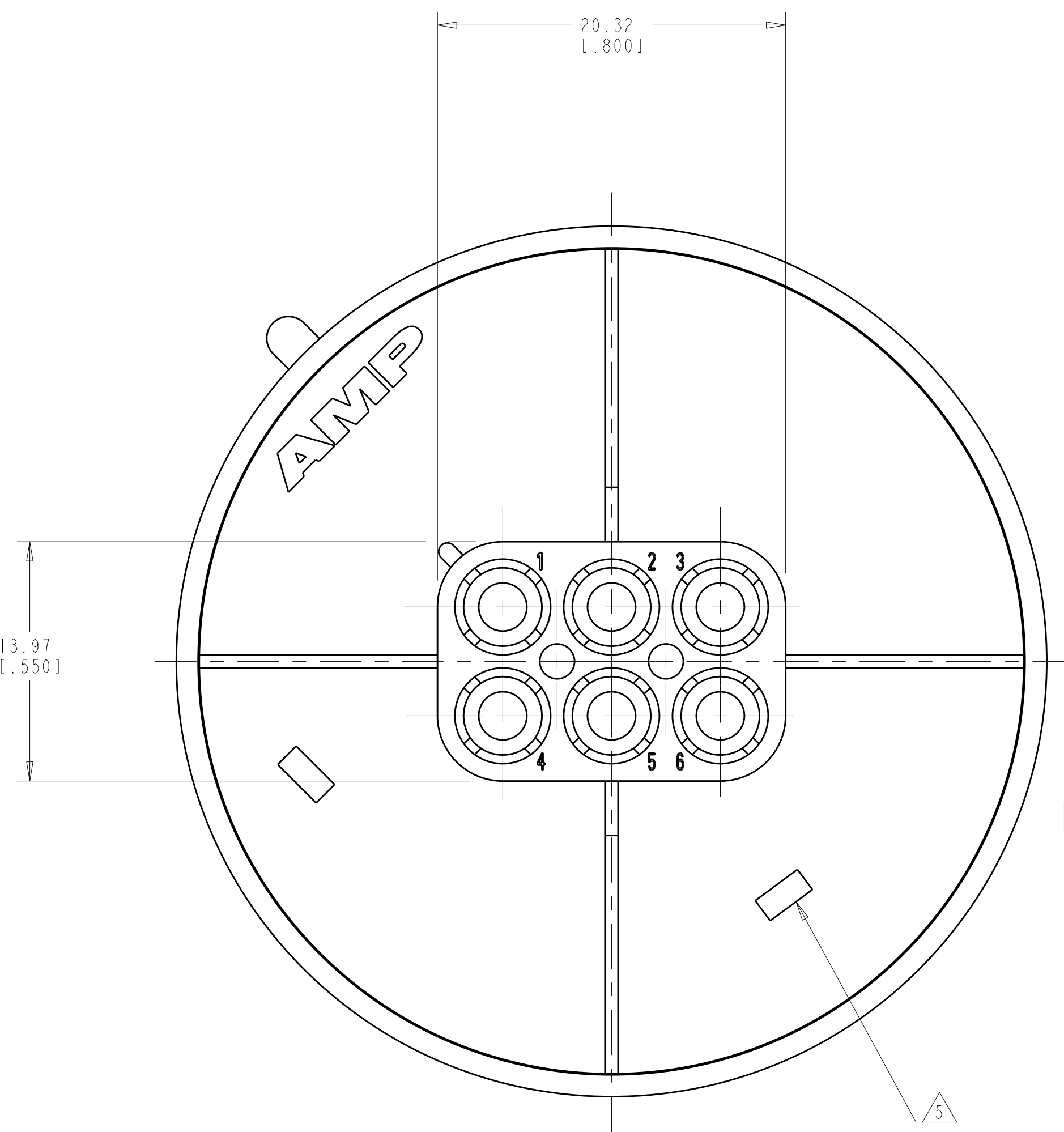
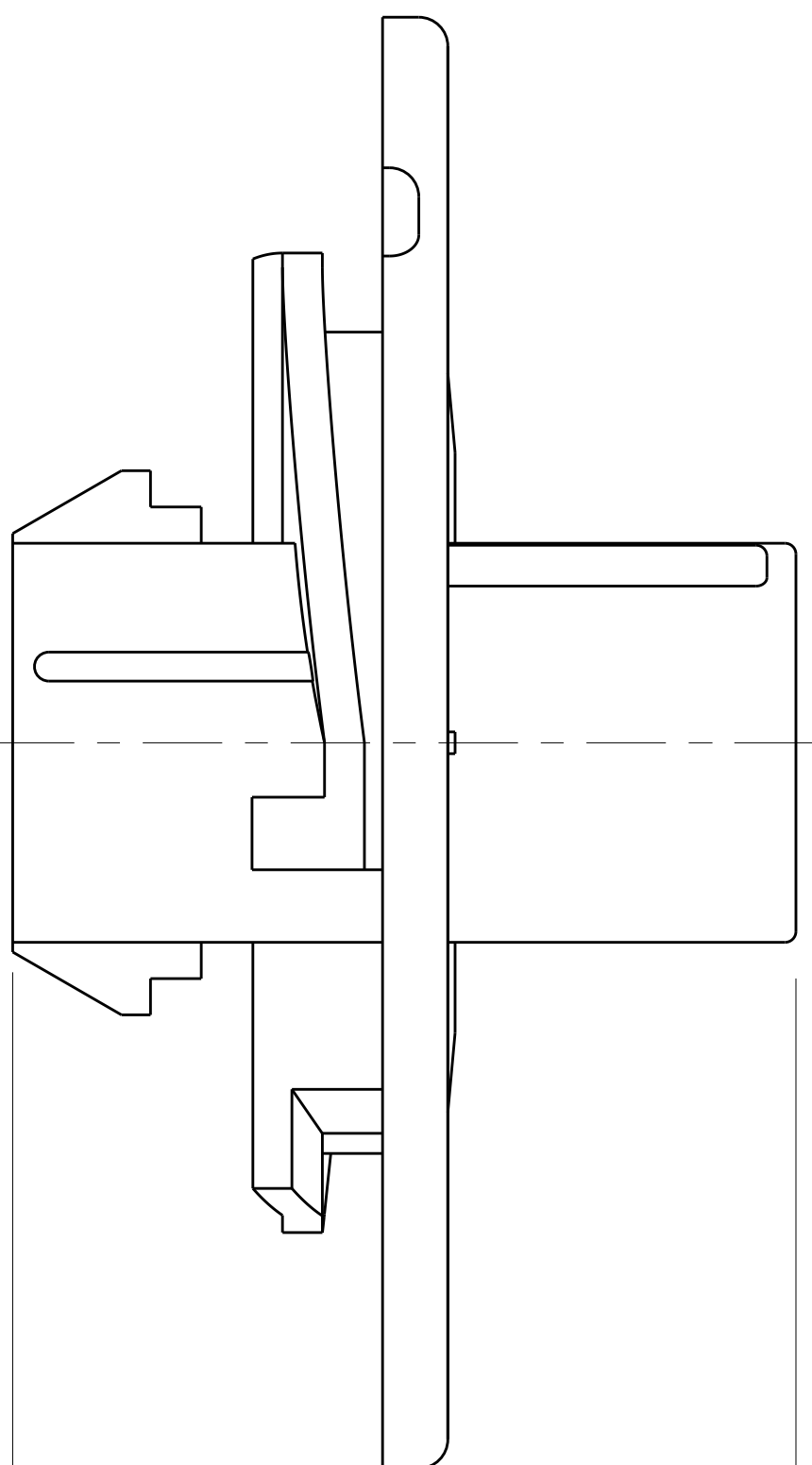
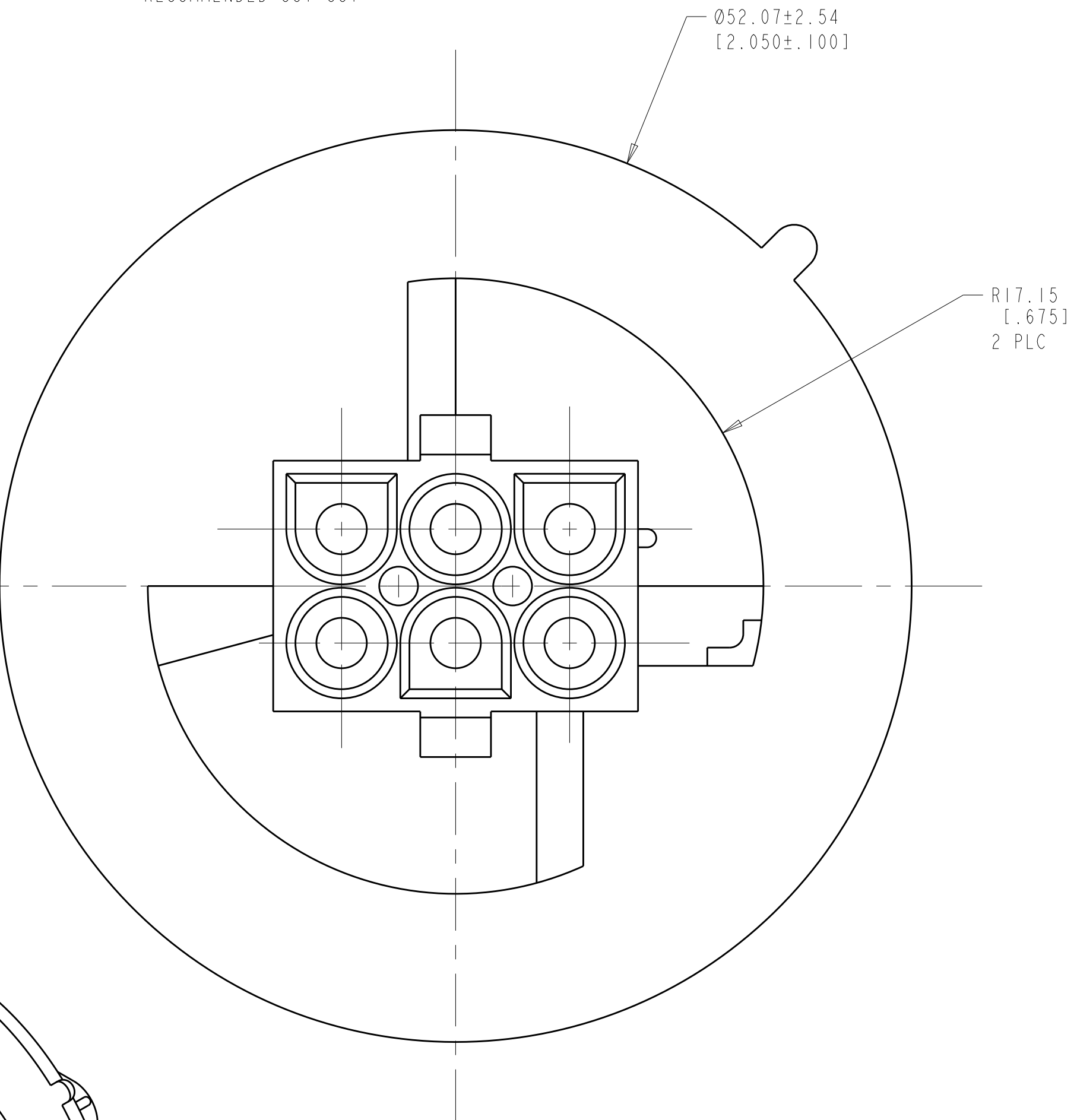


LOC		DIST		REVISIONS				
P	LTR	DESCRIPTION			DATE	DWN	APVD	
	M	REVISED PER ECR-17-015775			03NOV2017	BDA	KR	



1. MATES WITH APPROPRIATE UNIVERSAL MATE-N-LOK™ PLUG.
2. RECOMMENDED PANEL THICKNESS 0.76 - 2.29 [.030 - .090].
3. PANEL MUST BE PUNCHED SO THAT THE HOUSING ENTERS THE PANEL IN THE SAME DIRECTION AS THE PUNCH.
4. DIMENSIONS INDICATED ARE REFERENCE. ADDITIONAL GROWTH DUE TO SUBSEQUENT MOISTURE ABSORPTION MAY OCCUR.
4. NOTE DELETED.
5. UL AND CSA LOGOS LOCATED APPROXIMATELY AS SHOWN

RECOMMENDED CUT OUT



3-DIMENSIONAL MODEL  
SCALE 2:1

SUPERSEDED BY 1586887-1	NATURAL	9-794714-0
	BLACK	1-794714-9
	GRAY	1-794714-8
	BLUE	1-794714-6
	GREEN	1-794714-5
SUPERSEDED BY 794714-3	YELLOW	1-794714-4
	ORANGE	1-794714-3
	RED	1-794714-2
	BROWN	1-794714-1
	RED	794714-3
	NATURAL	794714-1
	COLOR	PART NUMBER

THIS DRAWING IS A CONTROLLED DOCUMENT.		DWN R. WHITAKER 06-OCT-1999	TE Connectivity	
DIMENSIONS: mm[INCHES]		CHK M. TRULL 06-OCT-1999		
TOLERANCES UNLESS OTHERWISE SPECIFIED:		APVD M. TRULL 06-OCT-1999	NAME	
0 PLC ±.005		PRODUCT SPEC	CAP. 6 CIRCUIT, UNIVERSAL MATE-N-LOK(TM), SPECIAL	
1 PLC ±.005		APPLICATION SPEC		
2 PLC ±.005		WEIGHT	SIZE CAGE CODE DRAWING NO	
3 PLC ±.005		FINISH	A1 00779 C=794714	
4 PLC ±.005		CUSTOMER DRAWING	SCALE 4:1 SHEET 1 OF 1 REV M	
MATERIAL NYLON				
UL 94V-2, NATURAL				

# Mouser Electronics

Authorized Distributor

Click to View Pricing, Inventory, Delivery & Lifecycle Information:

[TE Connectivity:](#)

[1-794714-6](#)