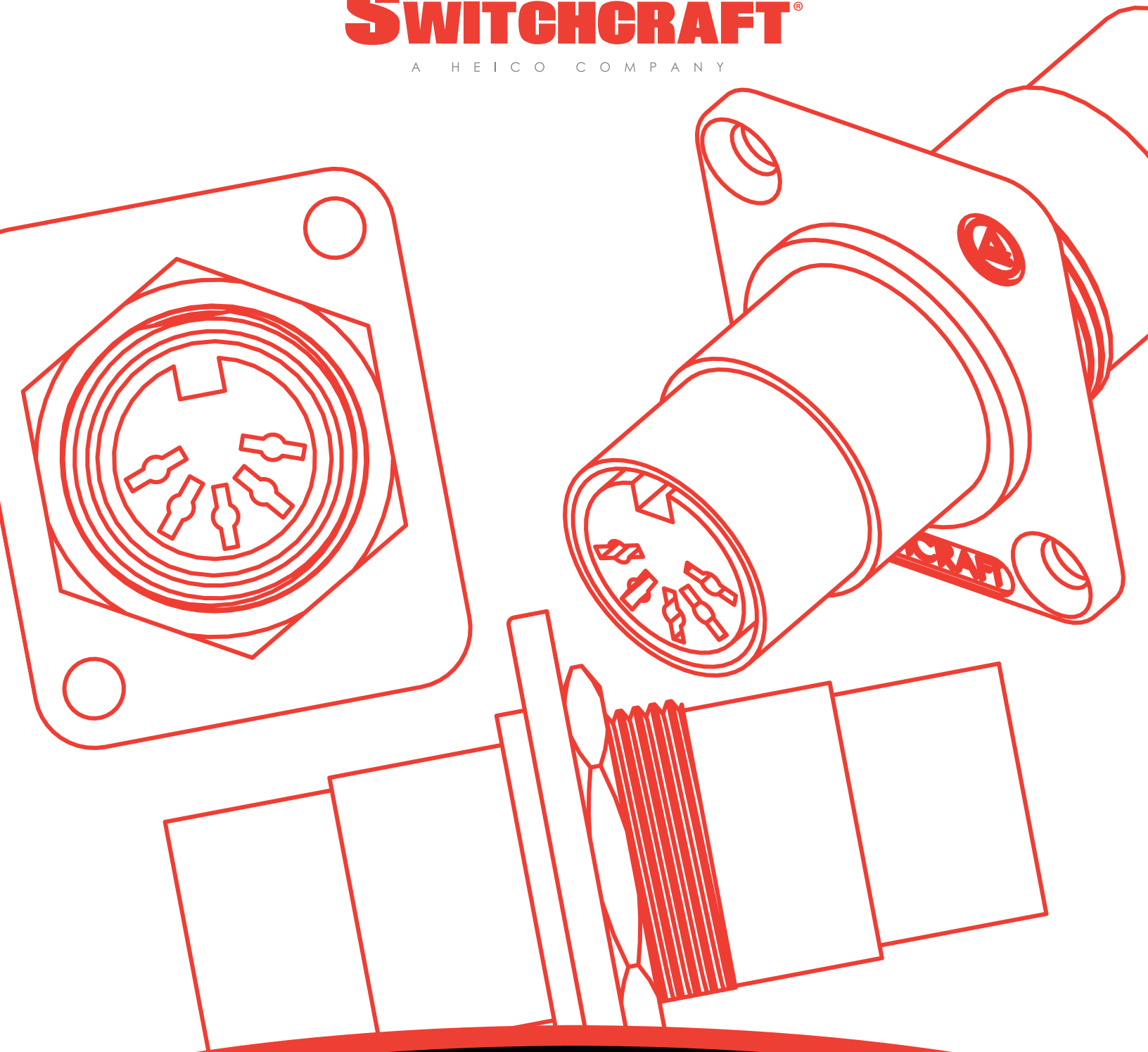


# SWITCHCRAFT®

A H E I C O C O M P A N Y



## EH SERIES: EH MIDI FEED-THRU

NPB | 612

# EH SERIES: EH MIDI FEED-THRU

NPB | 612



## NEW OPTION

Switchcraft is proud to introduce its newest option, the Female/Female DIN 5 coupler front mount, to the EH series of audio, video and data connectors. The EH Series is an extensive line of panel mount connectors used to create custom I/O panels and wall plates for A/V, pro audio, broadcast, mobile production and post production installations.

## FEATURES & BENEFITS

Compatible with Switchcraft® QGPK Series rack panels and WP Series wall plates

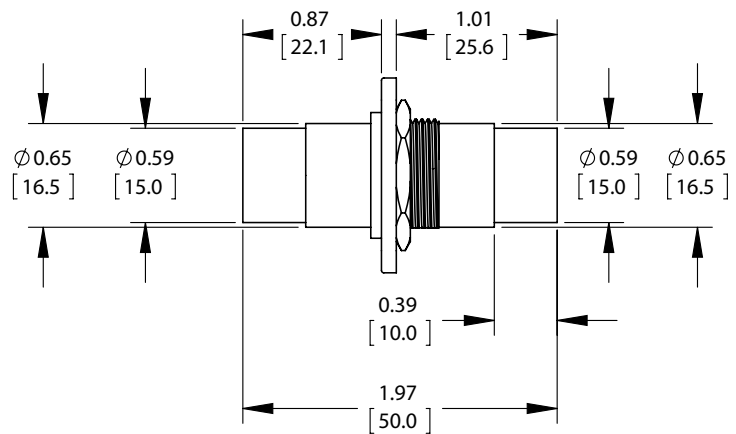
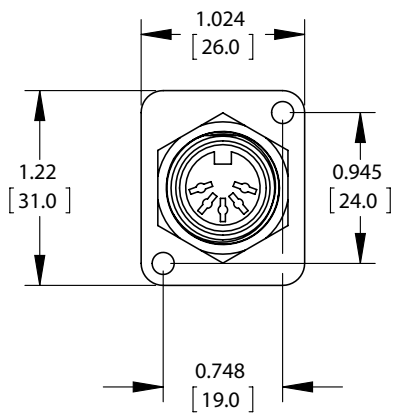
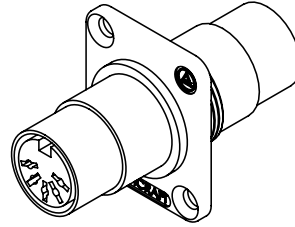
All connectors fit into a standard XLR panel cutout

Available in nickel or black flange

Available individually or bagged with mounting screws

# EH SERIES: EH MIDI FEED-THRU

NPB | 612



## SPECIFICATIONS

### EHMIDI2

- EH series Female/Female DIN 5 coupler front mount.
- Straight through wiring.
- Nickel plated flange.
- Insulation: Thermoplastic
- Metal: Copper Alloy, Nickel - Plated.
- Rating: 100 VAC, 1A Max.
- RoHS Compliant.

### EHMIDI2B

- EH series Female/Female DIN 5 coupler front mount.
- Straight through wiring.
- Black flange.
- Insulation: Thermoplastic
- Metal: Copper Alloy, Nickel - Plated, with black matte finish on flange.
- Rating: 100 VAC, 1A Max.
- RoHS Compliant.

UNITS ARE LISTED IN INCHES [mm]. ALL DIMENSIONS ARE REFERENCE ONLY.

# Mouser Electronics

Authorized Distributor

Click to View Pricing, Inventory, Delivery & Lifecycle Information:

[Switchcraft:](#)

[EHSVHS2BX](#) [EH6MD2BX](#) [EH6MD2X](#) [EHMIDI2B](#) [EHMIDI2BPKG](#) [EHMIDI2PKG](#) [EHMIDI2](#)