



Quality Products. Service Excellence.

Utility Enclosures 1411-1412 Series

Key Features

Two Versions:

- "1411" series - 0.04" thick aluminum (26 sizes)
- "1412" series - 20 gauge steel (8 sizes).
- Four self-tapping screws included.

Features:

- Unpainted aluminum or ASA 61 grey - baked powder paint.
- Unpainted aluminum version is protected through manufacturing and shipping with a plastic film cover to ensure a high quality finish. Also doubles as a removable drilling template.
- Versions with wall-mounting flanges are available in unfinished or black powder coated aluminum.
- Steel finished in ASA 61 grey baked powder paint (inside and out to prevent rust).
- Replacement screws **1421J6** (Pkg. of six (6), 6-32 Philips head screws).

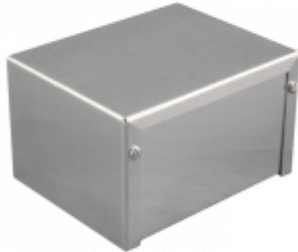


Photo Features



Unfinished aluminum versions have protective wrapping to maintain high quality finish.

Standard versions are available unfinished or powder coated gray. Steel version available only in gray.

Flanged aluminum versions available unfinished or powder coated in smooth black.

Enclosures

Aluminum Gray	Aluminum Unfinished	Aluminum Black w/ Flanges	Aluminum Unfinished w/ Flanges	Steel Gray	Length	Width	Height
------------------	------------------------	------------------------------	-----------------------------------	---------------	--------	-------	--------

Aluminum Gray	Aluminum Unfinished	Aluminum Black w/ Flanges	Aluminum Unfinished w/ Flanges	Steel Gray	Length	Width	Height
1411B	1411BU	1411FBBBK	1411FBBU		2.70	2.20	1.60
1411C	1411CU	1411FBCBK	1411FBCU		3.20	2.20	1.10
1411D	1411DU	1411FBDBK	1411FBDU		3.20	2.20	1.60
1411G	1411GU	1411FBGBK	1411FBGU		4.00	2.20	1.60
1411H	1411HU	1411FBHBK	1411FBHU		4.00	2.20	2.20
1411F	1411FU	1411FBFBK	1411FBFU		4.00	2.20	3.00
1411J	1411JU			1412J	4.00	4.00	2.00
1411K	1411KU	1411FBKBK	1411FBKU		5.00	2.20	2.20
1411N	1411NU	1411FBNBK	1411FBNU		5.00	3.00	2.20
1411L	1411LU	1411FBLBK	1411FBLU		5.00	4.00	3.00
1411M	1411MU				6.00	3.00	3.00
1411PP	1411PPU			1412PP	6.00	4.00	2.00
1411P	1411PU	1411FBPBK	1411FBPU		6.00	5.00	4.00
1411Q	1411QU	1411FBQBK	1411FBQU		7.00	5.00	3.00
1411SS	1411SSU			1412SS	8.00	4.00	2.00
1411S	1411SU	1411FBSBK	1411FBSU		8.00	4.00	3.00
1411RR	1411RRU			1412RR	8.00	6.00	2.00
1411R	1411RU	1411FBRBK	1411FBRU		8.00	6.00	3.50
1411T	1411TU				10.00	2.20	1.60
1411TT	1411TTU			1412TT	10.00	6.00	2.00
1411U	1411UU	1411FBUBK	1411FBUU		10.00	6.00	3.50
1411W	1411WU				12.00	3.00	2.20
1411X	1411XU	1411FBXBK	1411FBXU	1412X	12.00	7.00	4.00
1411V	1411VU			1412V	12.00	8.00	3.00
1411Y	1411YU			1412Y	16.00	8.00	3.00
1411Z	1411ZU				17.00	5.00	4.00

Data subject to change without notice

© 2018. Hammond Manufacturing Ltd. All rights reserved.

Mouser Electronics

Authorized Distributor

Click to View Pricing, Inventory, Delivery & Lifecycle Information:

Hammond:

[1411HU](#) [1411DU](#) [1411NU](#) [1411TU](#) [1411XU](#) [1411LU](#) [1411PU](#) [1411ZU](#) [1411FU](#) [1411BU](#) [1411GU](#) [1411WU](#)
[1411KU](#) [1411UU](#) [1411RU](#) [1411CU](#) [1411QU](#) [1411MU](#) [1411SU](#) [1411Q](#) [1411U](#) [1411M](#) [1411R](#) [1411K](#) [1411N](#)
[1411X](#) [1411P](#) [1411D](#) [1411W](#) [1411L](#) [1411G](#) [1411F](#) [1411Z](#) [1411B](#) [1411C](#) [1411S](#) [1411T](#) [1411H](#) [1411J](#) [1411JU](#)
[1411PP](#) [1411PPU](#) [1411RR](#) [1411RRU](#) [1411SS](#) [1411SSU](#) [1411TT](#) [1411TTU](#) [1411V](#) [1411VU](#) [1411Y](#) [1411YU](#)
[1412J](#) [1412PP](#) [1412RR](#) [1412SS](#) [1412TT](#) [1412V](#) [1412X](#) [1412Y](#) [1411FBHU](#) [1411FBHBK](#) [1411FBSU](#) [1411FBSBK](#)
[1411FBDU](#) [1411FBDBK](#) [1411FBNU](#) [1411FBNBK](#) [1411FBBBK](#) [1411FBBU](#) [1411FBCU](#) [1411FBCBK](#) [1411FBLU](#)
[1411FBLBK](#) [1411FBRU](#) [1411FBRBK](#) [1411FBPU](#) [1411FBPBK](#) [1411FBFU](#) [1411FBFBK](#) [1411FBQBK](#) [1411FBQU](#)
[1411FBUU](#) [1411FBUBK](#) [1411FBKU](#) [1411FBKBK](#) [1411FBGBK](#) [1411FBGU](#) [1411FBXU](#) [1411FBXBK](#)