

This drawing involves proprietary design rights of Tyco Electronics Corporation, and all design, manufacture, reproduction, use and sale rights regarding the same are expressly reserved. It is submitted for a specific purpose and the recipient by accepting this drawing, assumes custody and control and agrees to take reasonable precautions; (a) that this drawing will not be copied and reproduced, in whole or in part, or its contents revealed in any manner, or to any person except to meet the purpose for which it was delivered and (b) that any special features peculiar to this design will not be incorporated in other projects without the expressed written permission of Tyco Electronics Corporation.

REVISIONS			
EC	REV	DESCRIPTION	DATE
CPR	A	NEW RELEASE	07/21/05

NOTES: UNLESS OTHERWISE SPECIFIED.

1. PART NUMBER CHANGES AND OR DESIGN CHANGES AFFECTING ITEM INTERCHANGEABILITY REQUIRE PRIOR ELCON APPROVAL AND AUTHORIZATION BY REVISION TO THIS DRAWING.
2. MATERIALS:

INSULATORS: THERMOPLASTIC, GLASS REINFORCED, COLOR-BLACK, UL94V-0 FLAMMABILITY RATED.

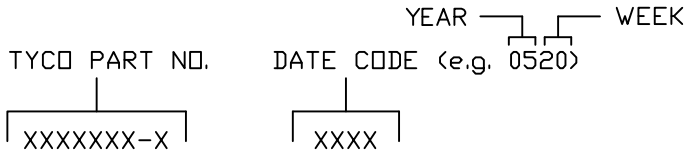
COMPLIANT SIGNAL PIN: PHOSPHOR BRONZE ALLOY.

POWER CONTACTS: PHOSPHOR BRONZE ALLOY, COPPER ALLOY.

CROWN BANDS: BERYLLIUM COPPER ALLOY.
3. FINISHES:

CONTACTS: GOLD PLATED PER MIL-G-45204 TYPE II, CLASS 0, .000030" MIN. THK, OVER NICKEL PER QQ-N-290, CLASS 2, .000040" MIN. THICKNESS.

TERMINALS: TIN PLATED, MATTE FINISH .000040" MIN. THICKNESS.
4. MOUNTING FLANGES ACCEPT M3 OR NO. 4 SCREWS, (USER SUPPLIED).
5. ITEMS PROVIDED TO THIS SPECIFICATION TO BE PERMANENTLY IDENTIFIED PER THE FOLLOWING IDENTIFIER:



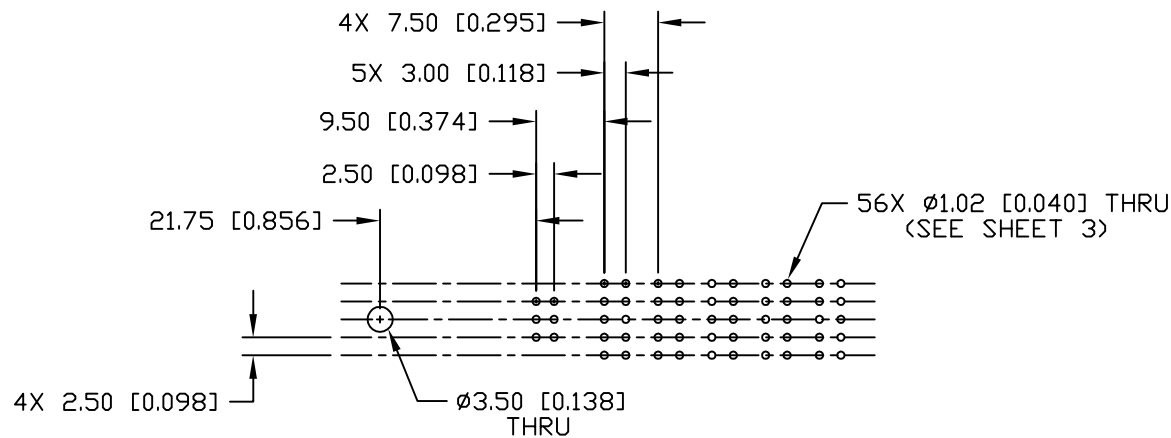
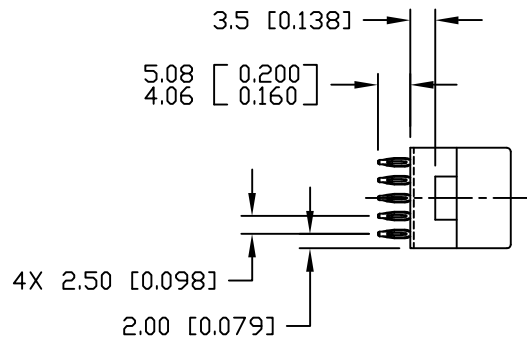
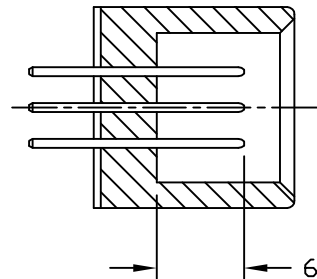
6. MODULE INFORMATION

CONNECTOR	TYCO PART NUMBER	CATALOG MODULE #	QTY	SIZE NO.	CONTACT QTY	MATING PIN	MAX. CURRENT (PER CONTACT)	CONTACT SPACING	VOLTAGE RATING*
PIN	6651717-1	FP0200	5	8	5	1.25 X 7.00 [.049 X .276]	35 AMPERES	7.50 [L2953]	250 VOLTS
		FP0412	1	22	6	.64 [L025] SQ.	3 AMPERES	2.50 [L0984]	125 VOLTS
		FP0502	1	STRAIGHT GUIDE SOCKET					
		FP0500	1	LEFT MOUNTING FLANGE					

*IAW IEC-950

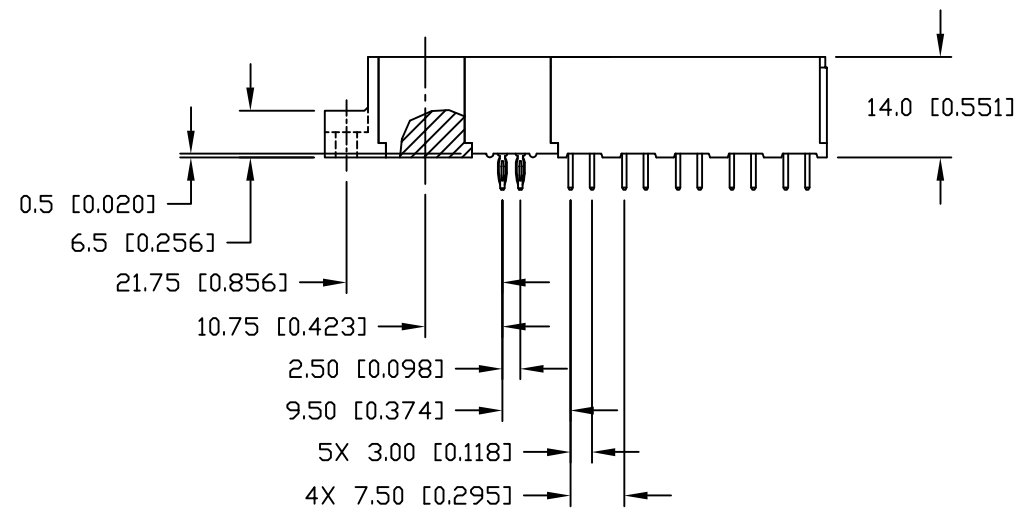
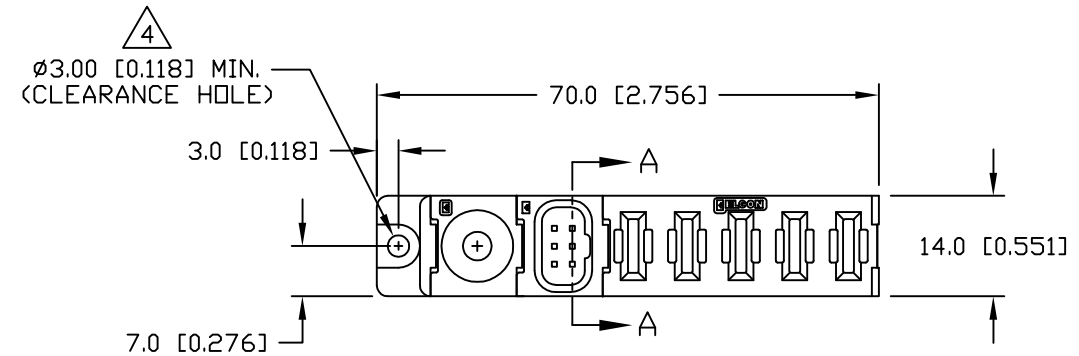
<div><div>MM OR MM [INCH]</div><div></div><div>THIRD ANGLE PROJECTION</div><div>UNLESS OTHERWISE SPECIFIED DIMENSIONS ARE IN METRIC [INCHES]</div><div>TOLERANCES</div><div>ANGLES ± .5°</div><div>DECIMALS</div><div>.XX ± .25 [.010]</div><div>.X ± .5 [.020]</div></div>	DRAWN	DATE	<div><div></div><div>Tyco Electronics Corporation Menlo Park, Ca 94025</div><div></div></div>			
	R. F. A.	07/20/05	TITLE CONNECTOR, PIN, STRAIGHT COMPLIANT TAILS, FLATPAQ PN 6651717-1			
	CHECKED					
	APPROVED					
	APPROVED		SIZE DWG NUMBER <div><div>B</div><div>C = 6651717</div></div>			REV. A
D. CHAU	08/01/05					
DCA APPROVED	08/02/05					
M. ALIM						
ACAD FILE NUMBER		C6651717A.DWG		DWG SCALE 1=1		SH 1 OF 3

This drawing involves proprietary design rights of Tyco Electronics Corporation, and all design, manufacture, reproduction, use and sale rights regarding the same are expressly reserved. It is submitted for a specific purpose and the recipient by accepting this drawing, assumes custody and control and agrees to take reasonable precautions; (a) that this drawing will not be copied and reproduced, in whole or in part, or its contents revealed in any manner, or to any person except to meet the purpose for which it was delivered and (b) that any special features peculiar to this design will not be incorporated in other projects without the expressed written permission of Tyco Electronics Corporation.



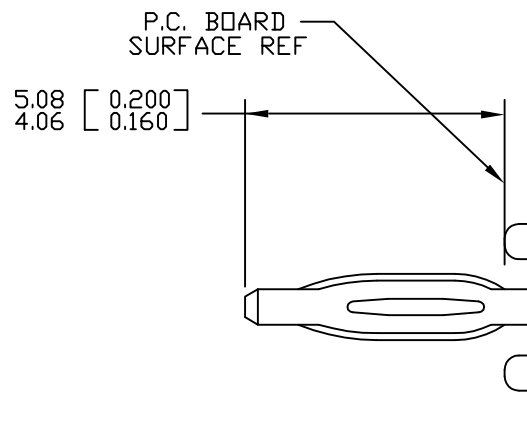
PRINTED CIRCUIT LAYOUT

REVISIONS			
EC	REV	DESCRIPTION	DATE
		SEE SHEET 1	



<div>MM INCH</div> <div>OR MM [INCH]</div> <div>THIRD ANGLE PROJECTION</div> <div>UNLESS OTHERWISE SPECIFIED DIMENSIONS ARE IN METRIC [INCHES]</div> <div>TOLERANCES</div> <div>ANGLES \pm .5°</div> <div>DECIMALS</div> <div>.XX \pm .25 [.010]</div> <div>.X \pm .5 [.020]</div>	DRAWN R. F. A.	DATE 07/20/05	<div>tyco Tyco Electronics Corporation Electronics Menlo Park, Ca 94025</div> <div>ELCON</div>
	CHECKED		TITLE CONNECTOR, PIN, STRAIGHT COMPLIANT TAILS, FLATPAQ PN 6651717-1
	APPROVED		SIZE DWG NUMBER REV. B C = 6651717 A
	APPROVED D. CHAU DCA APPROVED M. ALIM	08/01/05 08/02/05	ACAD FILE NUMBER C6651717A.DWG DWG SCALE 1=1 SH 2 OF 3

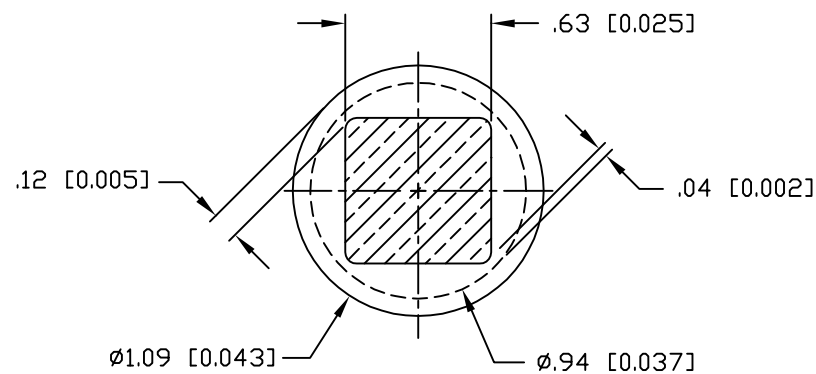
This drawing involves proprietary design rights of Tyco Electronics Corporation, and all design, manufacture, reproduction, use and sale rights regarding the same are expressly reserved. It is submitted for a specific purpose and the recipient by accepting this drawing, assumes custody and control and agrees to take reasonable precautions; (a) that this drawing will not be copied and reproduced, in whole or in part, or its contents revealed in any manner, or to any person except to meet the purpose for which it was delivered and (b) that any special features peculiar to this design will not be incorporated in other projects without the expressed written permission of Tyco Electronics Corporation.



COMPLIANT PIN DETAIL INSERTION/EXTRACTION FORCES

MAXIMUM PUSH-IN: 133.3N PER PIN
[30 LBS]

MINIMUM PUSH-OUT: 44.4N PER PIN
[10 LBS]



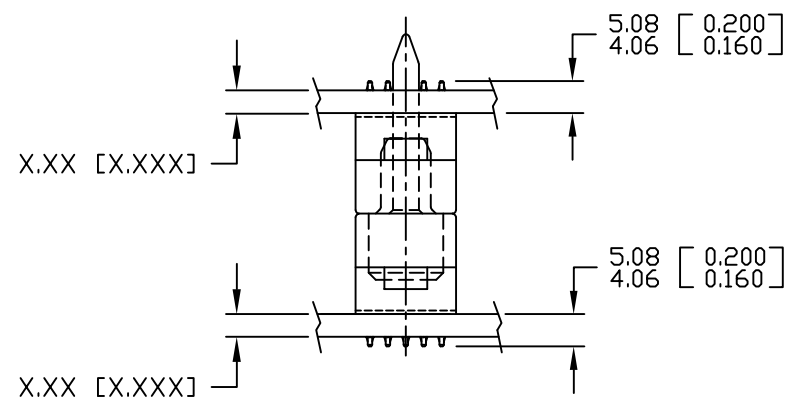
SOLDER TERMINATION AREA RECOMMENDED PRINTED CIRCUIT HOLE

FINISHED HOLE: Ø1.02 [0.040] ±.08 [0.003]

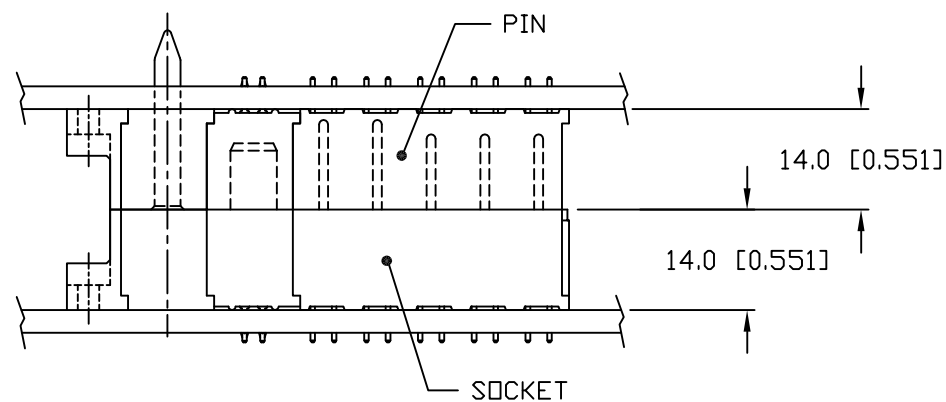
DRILLED HOLE: Ø1.15 [0.0453] ±.013 [0.0005]

COPPER PLATE: .025 [0.0010] MINIMUM (PER SURFACE)

TIN PLATE: .008 [0.0003] MINIMUM (PER SURFACE)



MATED CONDITION



<div>MM INCH</div> <div></div> <div>THIRD ANGLE PROJECTION</div> <div>UNLESS OTHERWISE SPECIFIED DIMENSIONS ARE IN METRIC [INCHES]</div> <div>TOLERANCES</div> <div>ANGLES ± .5°</div> <div>DECIMALS</div> <div>.XX ± .25 [.010]</div> <div>.X ± .5 [.020]</div>	DRAWN R. F. A.	DATE 07/20/05	<div>tyco Tyco Electronics Corporation Electronics Menlo Park, Ca 94025</div> <div>ELCON</div>	
	CHECKED		TITLE	
	APPROVED		USER INFORMATION COMPLIANT TAIL TERMINATION AND MATED CONDITION	
	APPROVED D. CHAU	08/01/05	SIZE B	DWG NUMBER C = 6651717
M. ALIM		08/02/05		
ACAD FILE NUMBER		C6651717A.DWG		DWG SCALE 1=1 SH 3 OF 3

Mouser Electronics

Authorized Distributor

Click to View Pricing, Inventory, Delivery & Lifecycle Information:

[TE Connectivity:](#)

[6651717-1](#)