

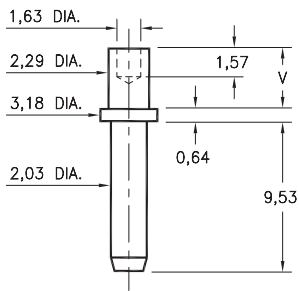
MALE PCB PINS

PRINTED CIRCUIT PINS

3231

3231-X-00-XX-00-00-08-0

Swage mount in 2,39 hole

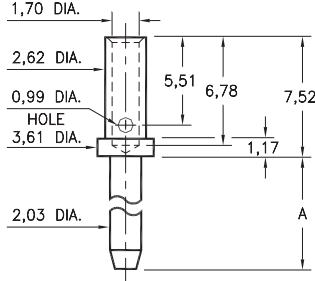


Basic Part Number	Board Thickness	Length V
3231-2	1,57	2,39
3231-3	2,39	3,18
3231-4	3,18	3,96

3609

3609-X-07-XX-00-00-08-0

Wire crimp termination. Accepts wire sizes 16 AWG Max. / 20 AWG Min.

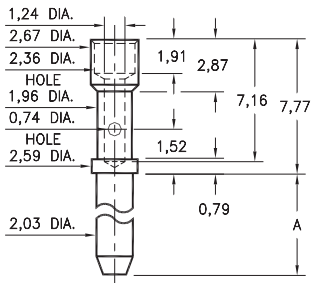


Basic Part Number	Pin Length A
3609-1	5,08
3609-2	9,53
3609-3	12,7

3601

3601-X-07-XX-00-00-08-0

Wire crimp termination. Accepts wire sizes 20 AWG Max. / 24 AWG Min.

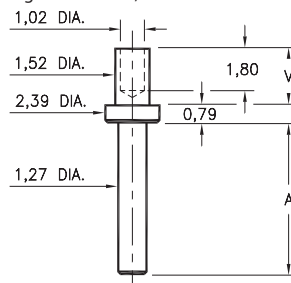


Basic Part Number	Pin Length A
3601-1	5,08
3601-2	9,53
3601-3	12,7

3133/3138/3152

31XX-X-00-XX-00-00-08-0

Specify board thickness
Swage mount in 1,63 hole



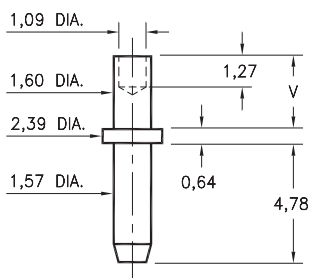
Basic Part Number	Pin Length A
3152-X	2,39
3133-X	5,56
3138-X	7,16

- X -	Board Thickness	Length V
1	0,79	1,60
2	1,57	2,39
3	2,39	3,18
4	3,18	3,96

3144

3144-X-00-XX-00-00-08-0

Swage mount in 1,70 hole

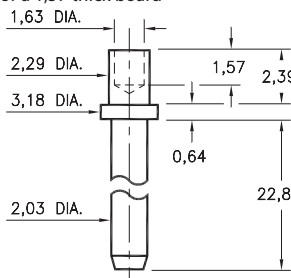


Basic Part Number	Board Thickness	Length V
3144-1	0,79	1,35
3144-2	1,57	2,13
3144-3	2,39	2,92

3233

3233-2-00-XX-00-00-08-0

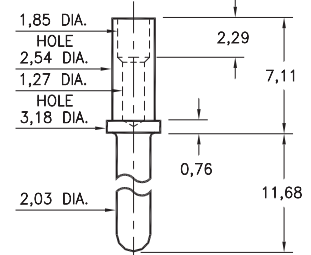
Swage mount in 2,39 hole
For a 1,57 thick board



0520

0520-0-00-XX-00-00-03-0

Annealed
Wire crimp termination. Accepts wire sizes 20 AWG Max. / 24 AWG Min.



SPECIFICATIONS:

Pin Material: Brass Alloy 360, 1/2 Hard
(Except swage pins which are annealed)

Dimensions: Millimeters

Tolerances On: Lengths: $\pm 0,13$
Diameters: $\pm 0,051$
Angles: $\pm 2^\circ$



ORDER CODE: XXXX - X - 0X - XX - 00 - 00 - XX - 0

BASIC PART #

SPECIFY PIN FINISH:

- 01 5,08µm TIN/LEAD OVER NICKEL
- ◆ 80 5,08µm TIN OVER NICKEL (RoHS)
- ◆ 15 0,25µm GOLD OVER NICKEL (RoHS)
- ◆ 21 0,51µm GOLD OVER NICKEL (RoHS)
- ◆ 34 1,27µm GOLD OVER NICKEL (RoHS)



Mouser Electronics

Authorized Distributor

Click to View Pricing, Inventory, Delivery & Lifecycle Information:

[Mill-Max:](#)

[3144-1-00-21-00-00-08-0](#) [3144-2-00-21-00-00-08-0](#) [3231-2-00-21-00-00-08-0](#) [3231-2-00-34-00-00-08-0](#) [3609-3-07-15-00-00-08-0](#)