

B

## A

4

3

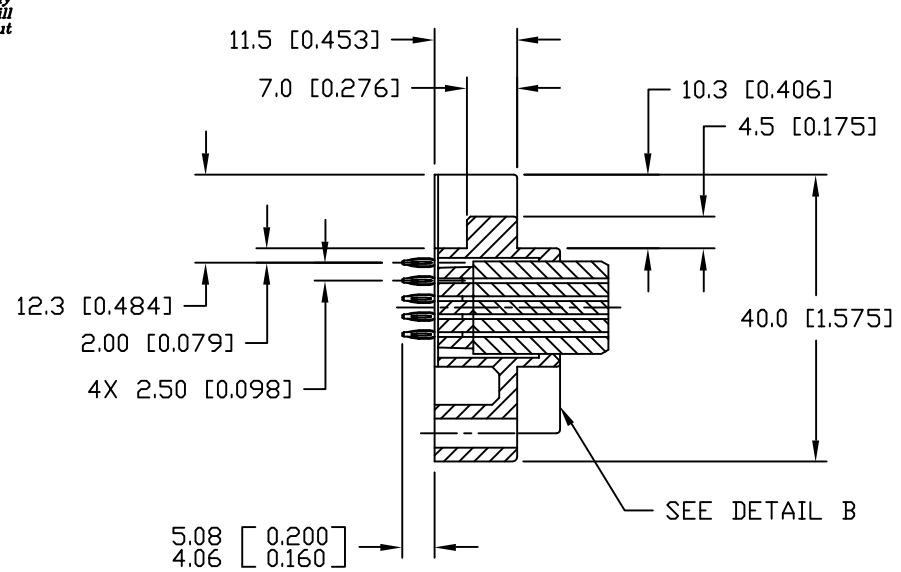
2

1

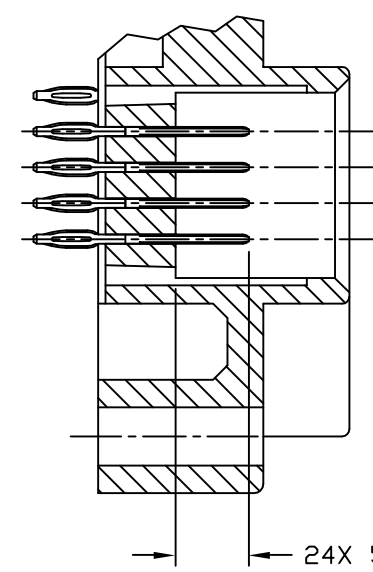
This drawing involves proprietary design rights of Tyco Electronics Corporation, and all design, manufacture, reproduction, use and sale rights regarding the same are expressly reserved. It is submitted for a specific purpose and the recipient by accepting this drawing, assumes custody and control and agrees to take reasonable precautions; (a) that this drawing will not be copied and reproduced, in whole or in part, or its contents revealed in any manner, or to any person except to meet the purpose for which it was delivered and (b) that any special features peculiar to this design will not be incorporated in other projects without the expressed written permission of Tyco Electronics Corporation.

B

A

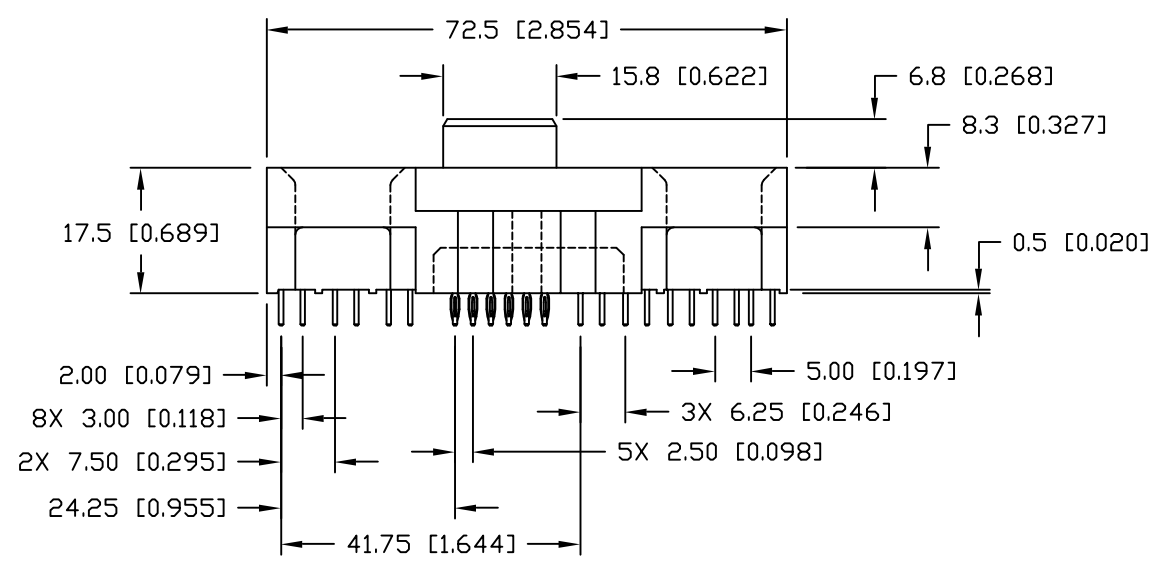
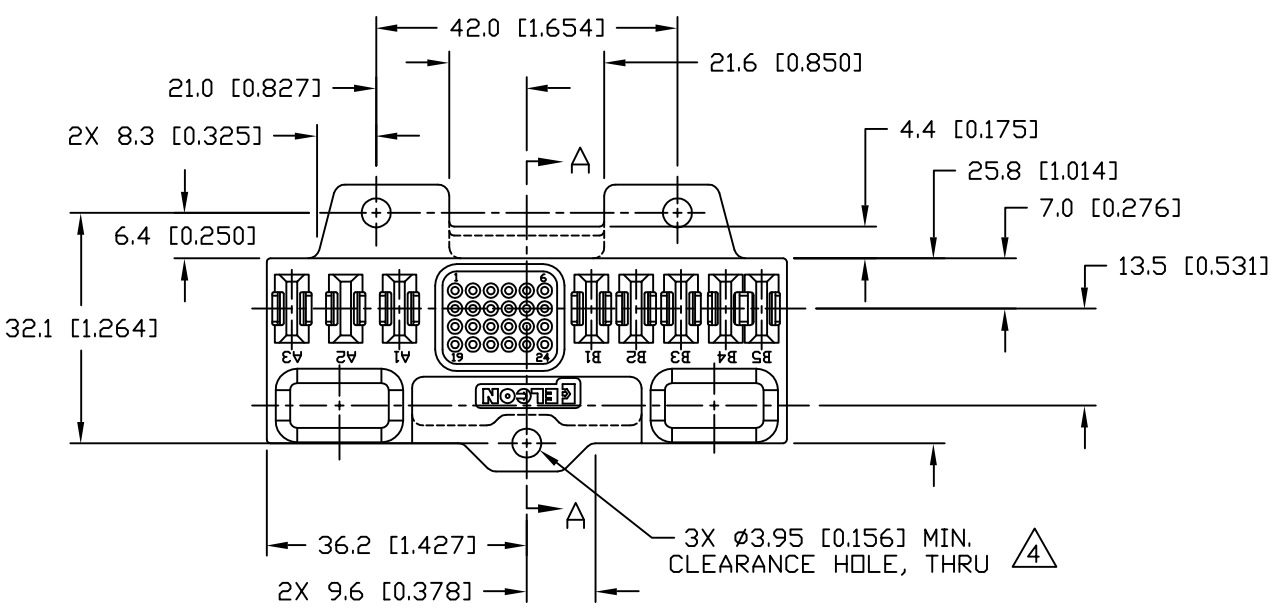


SECTION A-A



DETAIL B

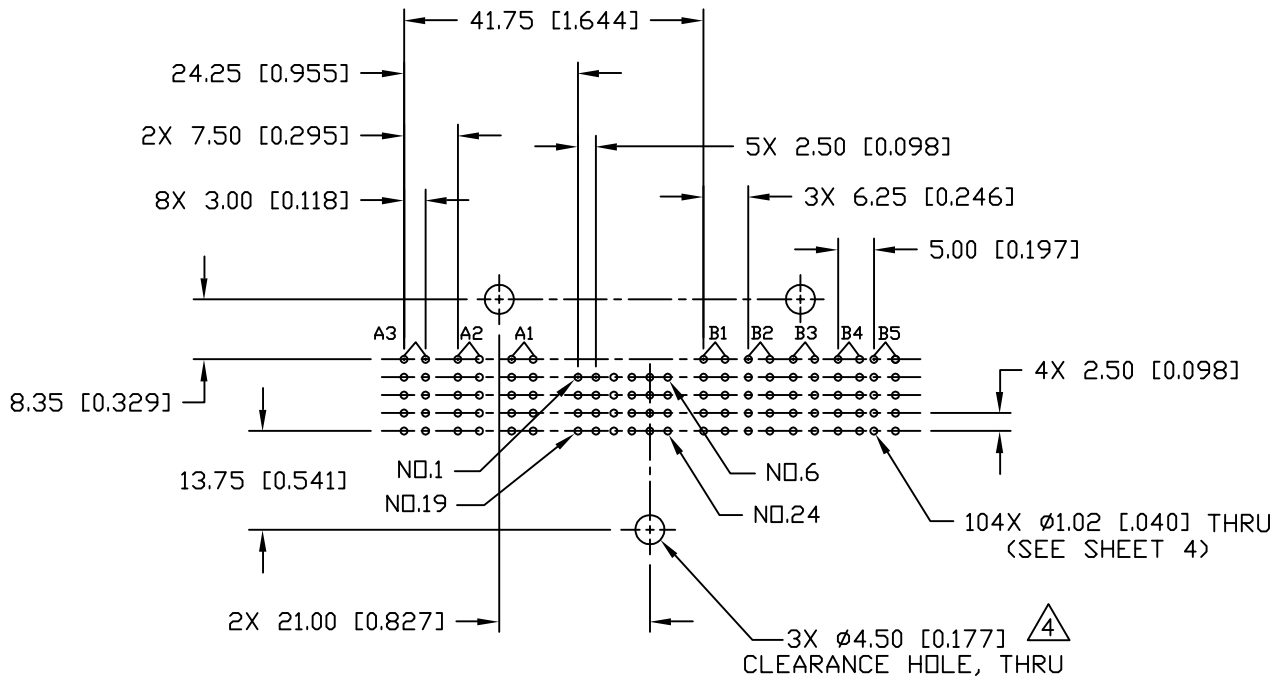
GENDER CHANGER NOT SHOWN FOR CLARITY



<div>MM INCH</div> <div></div> <div>THIRD ANGLE PROJECTION</div> <div>UNLESS OTHERWISE SPECIFIED DIMENSIONS ARE IN METRIC [INCHES]</div> <div>TOLERANCES</div> <div>ANGLES ± .5°</div> <div>DECIMALS</div> <div>.XX ± .25 [0.010]</div> <div>.X ± .5 [0.020]</div>	DRAWN R. F. A.	DATE 10/28/04	<div><b>tyco</b> Tyco Electronics Corporation <b>Electronics</b> Menlo Park, Ca 94025</div> <div><b>ELCON</b></div>		
	CHECKED		TITLE		
	APPROVED		SOCKET CONNECTOR, SERVERPAK STRAIGHT, COMPLIANT TAILS PN: 378-0895-10200A		
	APPROVED D. CHAU	12/29/04	SIZE B	DWG NUMBER C = 6648072	REV. A
	DCA APPROVED M. ALIM	01/07/05			
ACAD FILE NUMBER C6648072A.DWG		DWG SCALE 1=1		SH 2 OF 4	

This drawing involves proprietary design rights of Tyco Electronics Corporation, and all design, manufacture, reproduction, use and sale rights regarding the same are expressly reserved. It is submitted for a specific purpose and the recipient by accepting this drawing, assumes custody and control and agrees to take reasonable precautions; (a) that this drawing will not be copied and reproduced, in whole or in part, or its contents revealed in any manner, or to any person except to meet the purpose for which it was delivered and (b) that any special features peculiar to this design will not be incorporated in other projects without the expressed written permission of Tyco Electronics Corporation.

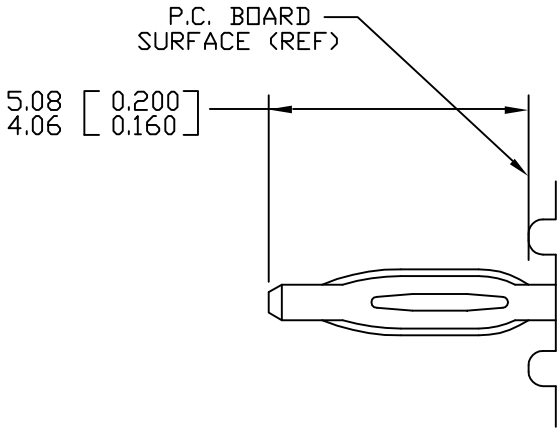
REVISIONS			
EC	REV	DESCRIPTION	DATE
		SEE SHEET 1	



PRINTED CIRCUIT LAYOUT

<div>MM INCH</div> <div>THIRD ANGLE PROJECTION</div> <div>UNLESS OTHERWISE SPECIFIED DIMENSIONS ARE IN METRIC [INCHES]</div> <div>TOLERANCES</div> <div>ANGLES ± .5°</div> <div>DECIMALS</div> <div>.XX ± .25 [0.010]</div> <div>.X ± .5 [0.020]</div>	DRAWN R. F. A.	DATE 10/28/04	<div><b>tyco</b> Tyco Electronics Corporation <b>Electronics</b> Menlo Park, Ca 94025</div> <div><b>ELCON</b></div> <div>TITLE</div> <div>SOCKET CONNECTOR, SERVERPAK PRINTED CIRCUIT LAYOUT PN: 378-0895-10200A</div>	
	CHECKED			
	APPROVED			
	APPROVED D. CHAU	12/29/04	SIZE B	DWG NUMBER C = 6648072
	DCA APPROVED M. ALIM	01/07/05		REV. A
ACAD FILE NUMBER		C6648072A.DWG		DWG SCALE 1=1 SH 3 OF 4

This drawing involves proprietary design rights of Tyco Electronics Corporation, and all design, manufacture, reproduction, use and sale rights regarding the same are expressly reserved. It is submitted for a specific purpose and the recipient by accepting this drawing, assumes custody and control and agrees to take reasonable precautions; (a) that this drawing will not be copied and reproduced, in whole or in part, or its contents revealed in any manner, or to any person except to meet the purpose for which it was delivered and (b) that any special features peculiar to this design will not be incorporated in other projects without the expressed written permission of Tyco Electronics Corporation.

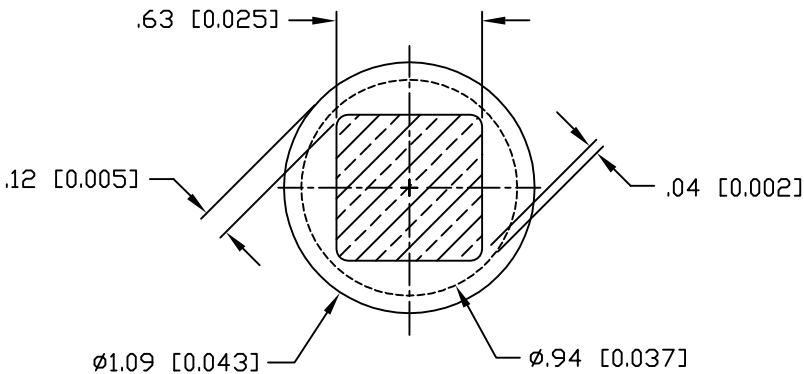


COMPLIANT PIN DETAIL

INSERTION/EXTRACTION FORCES

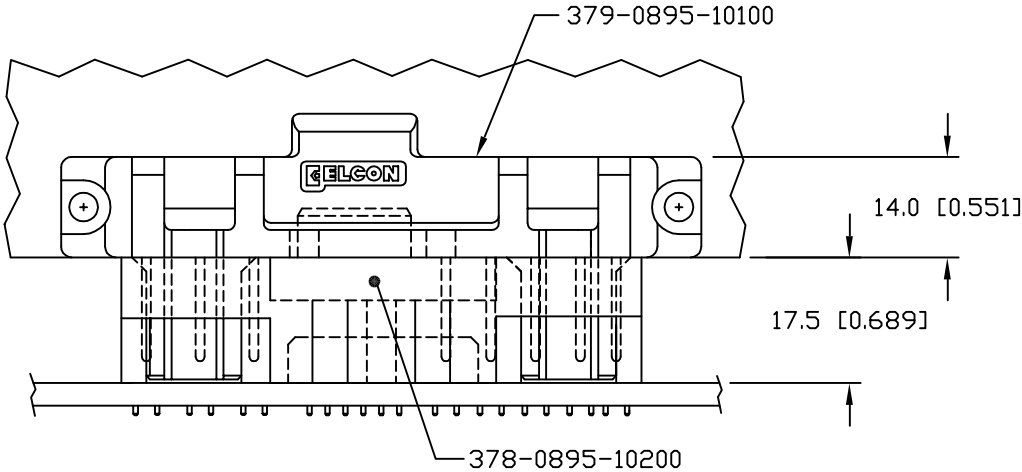
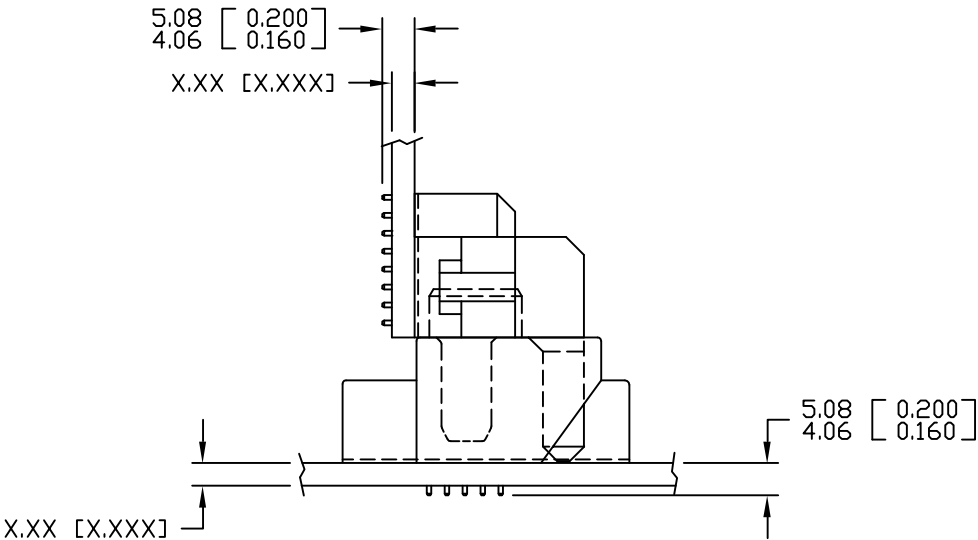
MAXIMUM PUSH-IN: 133.3N PER PIN  
[30 LBS]  
MINIMUM PUSH-OUT: 44.4N PER PIN  
[10 LBS]

REVISIONS			
EC	REV	DESCRIPTION	DATE
		SEE SHEET 1	



SOLDER TERMINATION AREA

RECOMMENDED PRINTED CIRCUIT HOLE  
FINISHED HOLE: Ø1.02 [0.040] ±.08 [0.003]  
DRILLED HOLE: Ø1.15 [0.0453] ±.013 [0.0005]  
COPPER PLATE: .025 [0.0010] MINIMUM (PER SURFACE)  
TIN PLATE: .008 [0.0003] MINIMUM (PER SURFACE)



MATED CONDITION

<div><div><div>← MM INCH</div><div>OR MM [INCH]</div></div><div></div><div>THIRD ANGLE PROJECTION</div></div> <div>UNLESS OTHERWISE SPECIFIED DIMENSIONS ARE IN METRIC [INCHES]</div> <div>TOLERANCES</div> <div>ANGLES ± .5°</div> <div>DECIMALS</div> <div>.XX ± .25 [0.010]</div> <div>.X ± .5 [0.020]</div>	DRAWN R. F. A.	DATE 10/28/04	<div><div><div>tyco</div><div>Electronics</div></div><div>Tyco Electronics Corporation Menlo Park, Ca 94025</div><div>ELCON</div></div>			
	CHECKED		TITLE			
	APPROVED		USER INFORMATION COMPLIANT TAIL TERMINATION AND MATED CONDITION			
	APPROVED D. CHAU	12/29/04				
	DCA APPROVED M. ALIM	01/07/05	SIZE B	DWG NUMBER C = 6648072		REV. A
ACAD FILE NUMBER		C6648072A.DWG		DWG SCALE 1=1	SH 4 OF 4	

# Mouser Electronics

Authorized Distributor

Click to View Pricing, Inventory, Delivery & Lifecycle Information:

[TE Connectivity:](#)

[6648072-1](#)