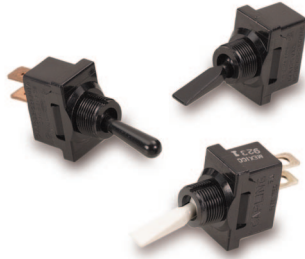


D-Series Single Pole Toggle Switches



The D-Series single pole compact high current toggle switches are ideal for applications with back panel size constraints. These switches feature self-cleaning contacts and ratings up to 20A 125VAC, 10A 250VAC, 1 1/2 HP 125-250VAC. With an economical double insulated all-nylon construction, these switches figure prominently in the Environmental Controls, Marine, Food Service, Vacuum Cleaner and various other general purpose markets with stringent current carrying requirements.

Dielectric Strength

UL/CSA: 1000V - live to dead metal parts & opposite polarity
TUV: 4000V - live to dead metal parts; 750V - across open contacts

Electrical Life

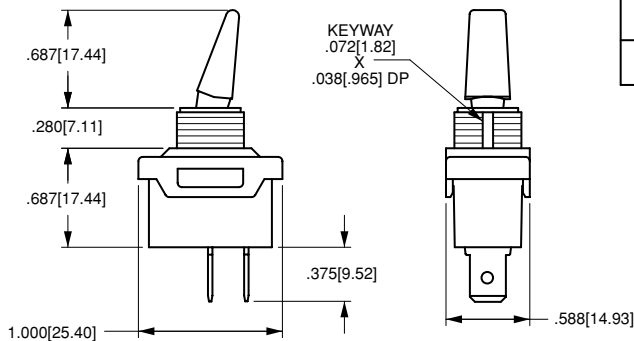
50,000 cycles

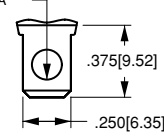
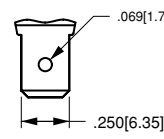
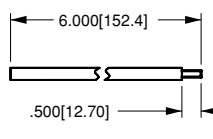
Mechanical Life

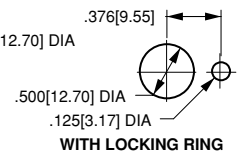
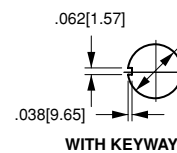
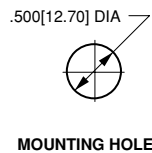
100,000 cycles

Operating Temperature

32°F to 185°F (0°C to 85°C)



		
SOLDER LUG	.250 TAB (Q.C.)	INTEGRATED WIRE LEAD (no exposed conductors)
TERMINAL TYPE		



DA221 - P - B - B

1
Base Part Number

2
Actuator
Style

3
Actuator
Color

4
Bushing
Color

1 BASE PART NUMBER: SERIES/CIRCUITRY/RATING/TERMINATION

10A 250VAC, 20A 125VAC, 1 1/2 HP 125-250VAC

	solder	.250	wire
	lug	tab	leads
OFF-NONE-ON	DA220	DA221	DA225
ON-NONE-ON	DB220	DB221	DB225
ON-OFF-ON	DC220	DC221	DC225

5A 250VAC, 10A 125VAC, 1/2 HP 125-250VAC,
4(4) 250VAC_μ TUV approved

ON-NONE-OFF	wire leads DA945 ¹
-------------	-------------------------------------

2 ACTUATOR STYLE

B	bat	P	paddle
---	-----	---	--------

3 ACTUATOR COLOR²

B	black	W	white
---	-------	---	-------

4 BUSHING COLOR²

B	black	W	white
---	-------	---	-------

NOTES

- Available with wire leads and ON-OFF circuit only.
- Additional colors available. Please consult factory.

Mouser Electronics

Authorized Distributor

Click to View Pricing, Inventory, Delivery & Lifecycle Information:

[Carling Technologies:](#)

[DA22-NUT](#) [999-16625-001](#)