


ANGIE-M

~20° medium beam

TECHNICAL SPECIFICATIONS:

Dimensions	Ø 34.0 mm
Height	10.7 mm
Fastening	glue, pin
ROHS compliant	yes 

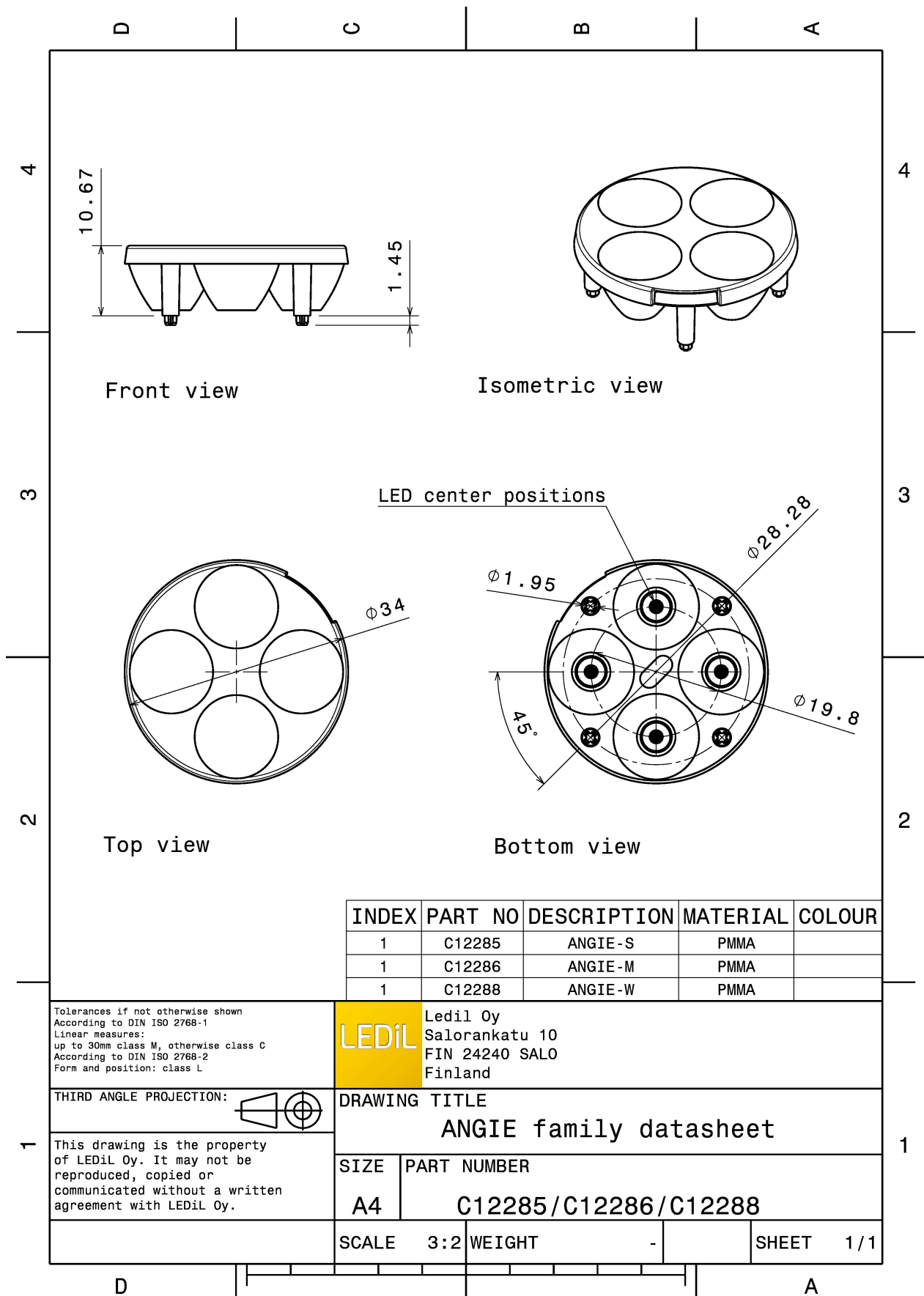
MATERIAL SPECIFICATIONS:

Component	Type	Material	Colour	Finish
ANGIE-M	Multi-lens	PMMA	clear	



ORDERING INFORMATION:

Component	Qty in box	MOQ	MPQ	Box weight (kg)
C12286_ANGLE-M » Box size: 480 x 280 x 300 mm	1254	132	66	8.4



PHOTOMETRIC DATA (MEASURED):



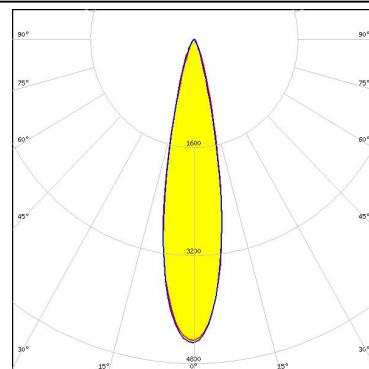
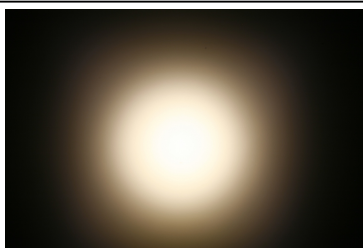
LED XP-E
FWHM 23.0°
Efficiency 86 %
Peak intensity 3.000 cd/lm
LEDs/each optic 1
Light colour White
Required components:



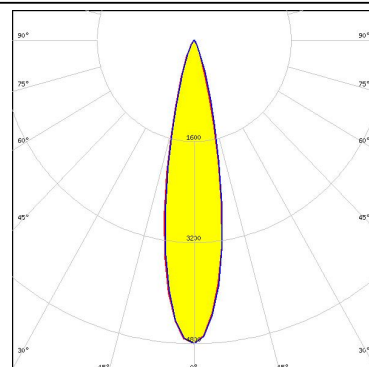
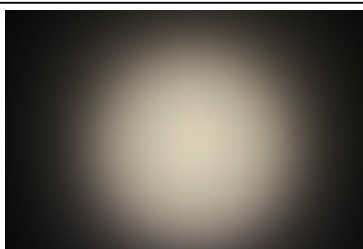
LED XP-G
FWHM 24.0°
Efficiency 88 %
Peak intensity 4.620 cd/lm
LEDs/each optic 1
Light colour White
Required components:



LED LUXEON T
FWHM 22.0°
Efficiency 90 %
Peak intensity 4.400 cd/lm
LEDs/each optic 1
Light colour White
Required components:



LED LUXEON TX
FWHM 22.0°
Efficiency 89 %
Peak intensity 4.800 cd/lm
LEDs/each optic 1
Light colour White
Required components:



PHOTOMETRIC DATA (MEASURED):

OSRAM Opto Semiconductors

LED OSLON Square EC
FWHM 22.0°
Efficiency 88 %
Peak intensity 4.500 cd/lm
LEDs/each optic 1
Light colour White
Required components:

OSRAM Opto Semiconductors

LED OSLON SSL 150
FWHM 16.0°
Efficiency 91 %
Peak intensity 6.900 cd/lm
LEDs/each optic 1
Light colour White
Required components:

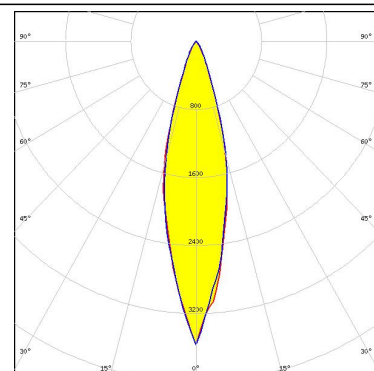
OSRAM Opto Semiconductors

LED OSLON SSL 80
FWHM 16.0°
Efficiency 87 %
Peak intensity 6.300 cd/lm
LEDs/each optic 1
Light colour White
Required components:

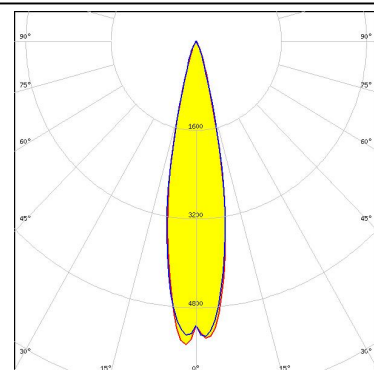
PHOTOMETRIC DATA (SIMULATED):



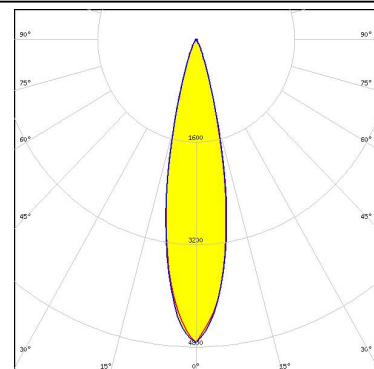
LED XP-L HD
FWHM 25.0°
Efficiency 89 %
Peak intensity 3.600 cd/lm
LEDs/each optic 1
Light colour White
Required components:



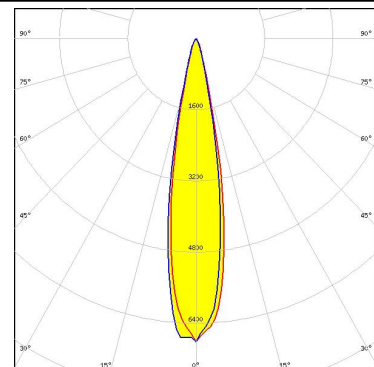
LED LUXEON H50-2
FWHM 22.0°
Efficiency 92 %
Peak intensity 5.500 cd/lm
LEDs/each optic 1
Light colour White
Required components:



LED NVSxx19B/NVSxx19C
FWHM 23.0°
Efficiency 93 %
Peak intensity 4.660 cd/lm
LEDs/each optic 1
Light colour White
Required components:



LED Z5M1/Z5M2
FWHM 20.0°
Efficiency 92 %
Peak intensity 6.950 cd/lm
LEDs/each optic 1
Light colour White
Required components:



GENERAL INFORMATION:

NOTE: The typical beam angle will be changed by different color, chip size and chip position tolerance. The typical total beam angle is the full angle measured where the luminous intensity is half of the peak value.

MATERIALS:

As part of our continuous research and improvement processes, and to ensure the best possible quality and availability of our products, LEDiL reserves the right to change material grades without notice.

PRODUCT DATA USER AGREEMENT AND DISCLAIMER:

The measured data in the provided downloadable LEDiL Product Datasheets and Mechanical 2D-Drawings is rounded and provided as reference for planning. LEDiL Oy's optical specifications have been verified by conducting performance testing of the products in accordance with the company's quality system. The reported data are averaged results of multiple measurements with typical variation. LEDiL Oy reserves the right to without prior notification make changes and improvements to its products.

LEDiL Oy assumes neither warranty, nor guarantee nor any other liability of any kind for the contents and correctness of the provided data. The provided data has been generated with highest diligence but the provided data may in reality not represent the complete possible variation range of all intrinsic parameters. Therefore, in certain cases a deviation from the provided data could occur.

LEDiL Oy reserves the right to undertake technical changes of its products without further notification which could lead to changes in the provided data. LEDiL Oy assumes no liability of any kind for the possible deviation from any provided data or any other damage resulting from the usage of the provided data.

The user agrees to this disclaimer and user agreement with the download or usage of the provided files.

LEDiL Oy

Joensuunkatu 13
FI-24240 SALO
Finland

LEDiL Inc.

228 West Page Street
Suite D
Sycamore IL 60178
USA

Local sales and technical support

[www.ledil.com/
where_to_buy](http://www.ledil.com/where_to_buy)

Shipping locations

Salu, Finland
Hong Kong, China

Distribution Partners

[www.ledil.com/
where_to_buy](http://www.ledil.com/where_to_buy)