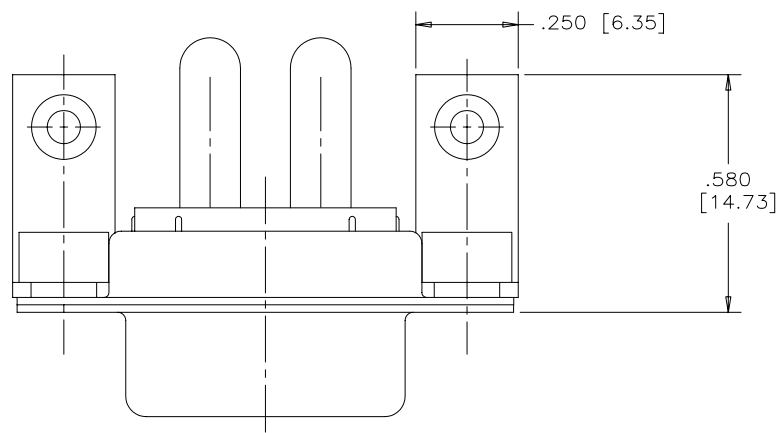


REVISIONS			
REV	ECN, ERN NO.	DATE	APPRD.
A	PRODUCT DRAWING	SEP26/08	K.L.

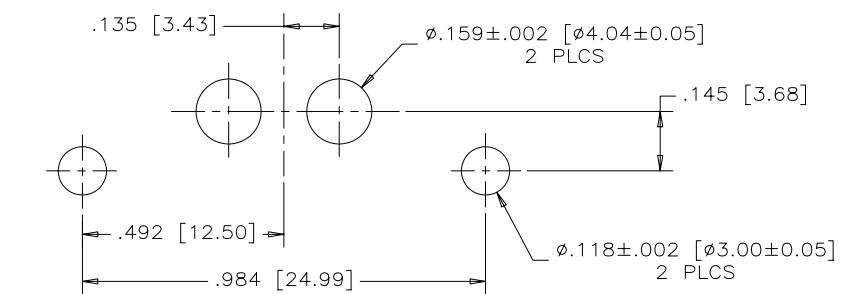
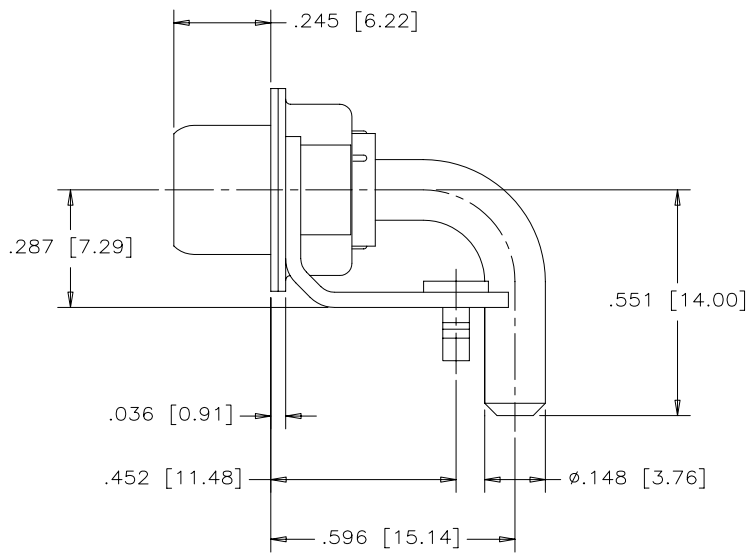
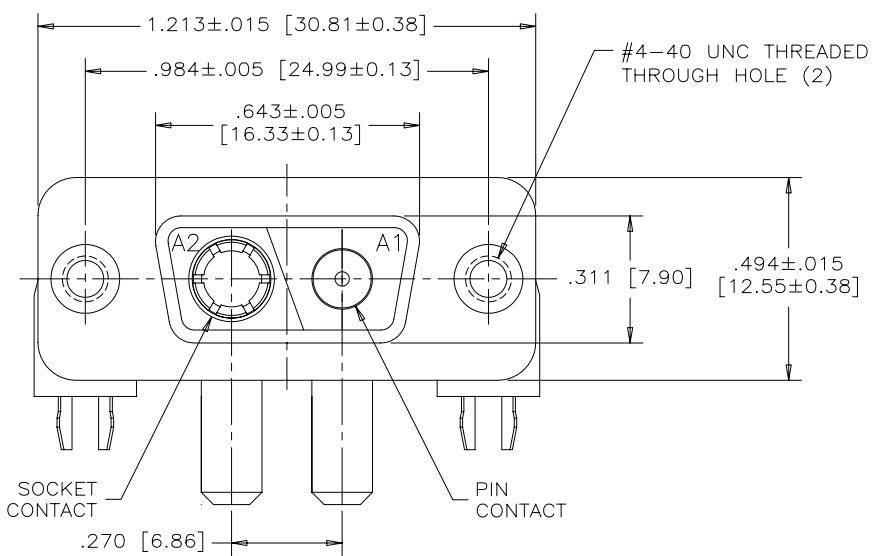


MECHANICAL DATA:

- MATERIALS:** ALL MATERIALS ARE RoHS COMPLIANT
- SHELLS:** STAMPED STEEL, TIN PLATED.
- INSERT:** HIGH TEMPERATURE RESISTANT THERMOPLASTIC, GLASS REINFORCED. FLAMMABILITY RATING UL94V-0, BLACK
- CONTACT:** COPPER ALLOY, 30 MICRONS [0.76 MICRONS] GOLD PLATED OVER NICKEL
- HARDWARE:** STEEL OR COPPER ALLOY, TIN PLATED.

ELECTRICAL DATA:

CURRENT RATING 40 AMPS



RECOMMENDED P.C.B. LAYOUT
(COMPONENT SIDE OF BOARD)

AMPHENOL PART NUMBER: FCE17-E2W2SB-4N1



THIS DOCUMENT CONTAINS PROPRIETARY INFORMATION AND SUCH INFORMATION MAY NOT BE DISCLOSED TO OTHERS FOR ANY PURPOSE OR USED FOR MANUFACTURING PURPOSES WITHOUT WRITTEN PERMISSION FROM AMPHENOL CANADA CORP.

DRAWN	K. LAMBIE	DATE	SEP26/08	Amphenol Canada Corp.			
DESIGNED							
CHECKED				FCE17 COMBINATION 2W2 D-SUB SOCKET CONNECTOR, MIXED PIN & SOCKET 90° BEND POWER CONTACTS, 4-40 MTG HOLE, METAL BRACKETS, RoHS COMPLIANT			
I. E. APPRD.							
Q. A. APPRD.							
DWG. APPRD.							
ENG. REL. NO.	EAR 13352	DWG	DRAWING NO.	C	P-FCE17-E2W2SB-4N1	REV.	A
REF.		DIMENSIONS ARE IN	CODE ID. NO.	INCHES [mm]	03554	SCALE	4/1
		WT.		SURF.		SHEET	1 OF 1

Mouser Electronics

Authorized Distributor

Click to View Pricing, Inventory, Delivery & Lifecycle Information:

Amphenol:

[FCE17B25PEAE0](#) [FCE17E09SB2DE](#) [FCE17-E2W2SB-4N1](#) [FCE17-B25PA-412](#) [FCE17A15PB2DE](#)
[FCE17E09PA440G](#) [FCE17A15SEA50](#) [FCE17A15SM3D0G](#) [FCE172BPCSEEE1](#) [FCE17E09SE950](#) [FCE17E09AD293](#)