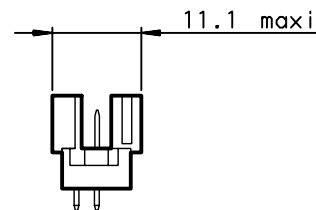
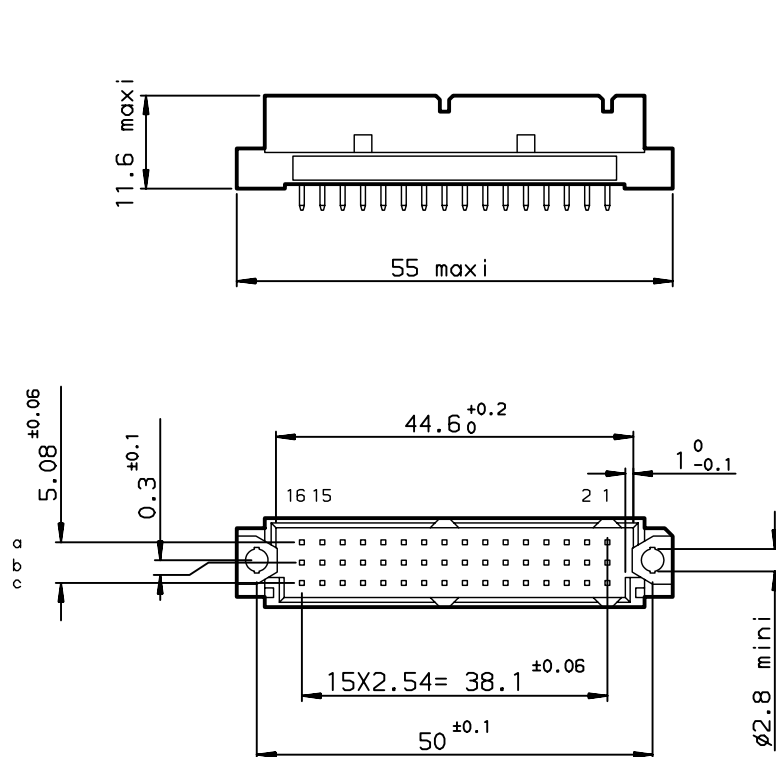
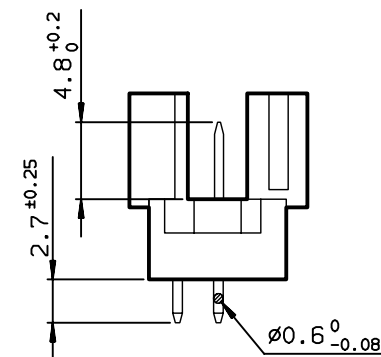


DIMENSIONS



TERMINATION



TIN LEAD PART NUMBER

PART NUMBER

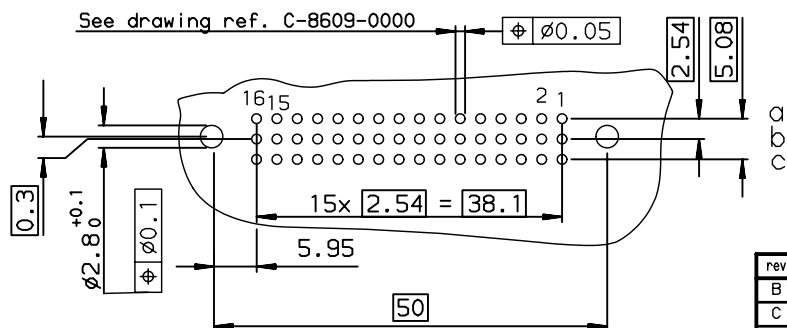
86092327624765000E1

LEAD FREE PART NUMBER

PART NUMBER

86092327624765E1LF




P.C. CARD DRILLING (Component side view)



GENERAL CHARACTERISTICS AND ROHS INFORMATIONS:

SEE DRAWING C-8609-0000A

European Views

www.fciconnect.com			surface ISO 1302		tolerance std ISO 406 ISO 1101		projection 		mm 	
			TOLERANCES UNLESS		OTHERWISE SPECIFIED					
Dr	ROUILLARD	1996/08/01	ANGULAR	LINEAR	0.X	±0.1	size A3	Scale 1.5		
Eng	TARON	1996/08/01			0.XX	±0.1				
Chr	LEGARE	1996/08/01			0.XXX	±0.1				
Appr	LEGARE	1996/08/01	Product family DIN 8609				Spec ref - LS06-0095			
			title STRAIGHT MALE - STYLE R/2 32 CONTACTS				dwg no C-8609-0517		Rev. D	
catalog no			-				CUSTOMER		sheet 1 of 1	

Mouser Electronics

Authorized Distributor

Click to View Pricing, Inventory, Delivery & Lifecycle Information:

[FCI / Amphenol:](#)

[86092327624765E1LF](#)