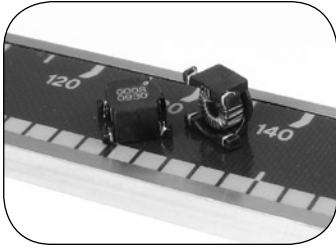


# X-Coil

## Gate and Signal Transformer



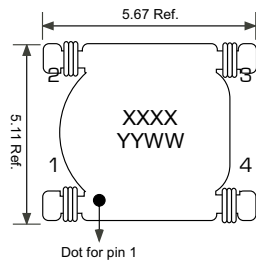
### Features

- Small Footprint
- Low Profile
- Flat Top Surface Suitable for Pick-and-Place
- RoHS Compliant

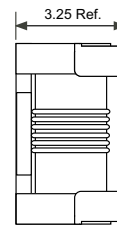
### Applications

- Gate Drive Transformer
- Isolated Pulse and Signal Transformers
- DC/DC and AC/DC Converters

Top View



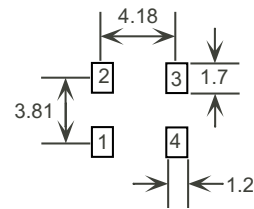
Side View



Schematic



Footprint



units: mm

### Electrical Specifications

| Part No. | $L_s^1$<br>( $\mu\text{H Min.}$ ) | $L_{LKG}^1$<br>( $\text{nH Max.}$ ) | DCR<br>( $\text{mOhms Max.}$ ) | E-T<br>( $\text{V}\cdot\mu\text{Sec}$ ) | Turns Ratio | Hi-Pot<br>( $\text{V}_{DC}$ ) |
|----------|-----------------------------------|-------------------------------------|--------------------------------|---|-------------|-------------------------------|
| XT01     | 100                               | 150                                 | 320                            | 10.0                                    | 1:1         | 2,250                         |
| XT02     | 140                               | 150                                 | 350                            | 12.8                                    | 1:1         | 120                           |
| XT03     | 31                                | 600                                 | 120                            | 3.75                                    | 1:1         | 2,350                         |
| XT04     | 86                                | 100                                 | 140                            | 6.25                                    | 1:1         | 2,350                         |

Notes:

1. Tested at 100kHz, 0.1Vrms.
2. Electrical specifications at 25°C.
3. Operating range: -40°C to +130°C. This is a combination of ambient plus temperature rise.
4. All products are RoHS-compliant.



Specifications subject to change without notice.

# Mouser Electronics

Authorized Distributor

Click to View Pricing, Inventory, Delivery & Lifecycle Information:

[ICE Components:](#)

[XT01](#) [XT02](#) [XT03](#) [XT04](#)