

FLEX STACK

(2.54 mm) .100"

HW-14-08-G-S-300-100

ZW-06-13-L-D-787-118

DW-11-20-T-D-825

DW, EW, ZW, HW-TH SERIES

FLEXIBLE .025" SQ BOARD STACKERS

Mates with:

SSW, SSQ, ESW, ESQ, CES, SLW, BSW, BCS, SSM, HLE, PHF

Cable Mates:

IDSS, IDSD

SPECIFICATIONS

For complete specifications see www.samtec.com?DW, www.samtec.com?EW, www.samtec.com?ZW or www.samtec.com?HW-TH

Insulator Material:

DW, EW, ZW: Black Glass

Filled Polyester

HW: Natural Liquid

Crystal Polymer

Terminal Material:

Phosphor Bronze

Plating:

Au or Sn over

50 μ " (1.27 μ m) Ni

Operating Temp Range:

-55 °C to +125 °C with Gold

-55 °C to +105 °C with Tin

RoHS Compliant:

Yes

Lead-Free Solderable:

DW, EW, ZW:

No, Lead Wave Only

HW: Yes

RECOGNITIONS

For complete scope of recognitions see www.samtec.com/quality



ALSO AVAILABLE (MOQ Required)

- Other platings

Notes:

For added mechanical stability, Samtec recommends mechanical board spacers be used in applications with gold or selective gold plated connectors. Contact ipg@samtec.com for more information.

This Series is non-standard, non-returnable.

TYPE STRIP

NO. PINS PER ROW

LEAD STYLE

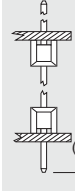
PLATING OPTION

ROW OPTION

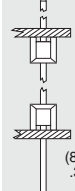
STACKER HEIGHT

OTHER OPTIONS

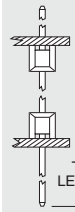
DW
= (2.79 mm)
.110" Tail



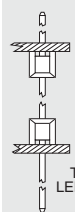
EW
= (8.38 mm)
.330" Tail



ZW
= Custom Tail



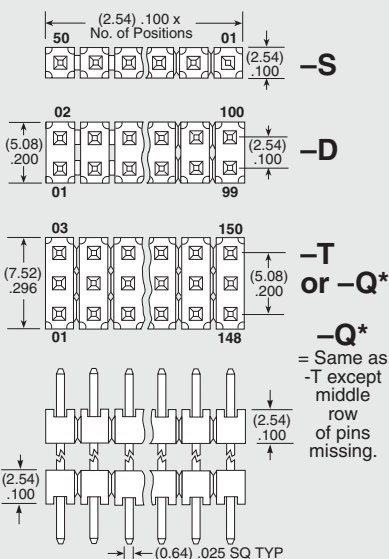
HW
= High Temp Custom Tail



Specify LEAD STYLE from chart

LEAD STYLE	OAL
-07	(10.92) .430
-08	(13.46) .530
-09	(18.54) .730
-10	(21.08) .830
-11	(23.62) .930
-12	(26.16) 1.030
-13	(31.24) 1.230
-14	(36.32) 1.430
-15	(16.00) .630
-16	(11.30) .445
-17	(12.19) .480
-19	(33.78) 1.330
-20	(28.70) 1.130

01 thru 50



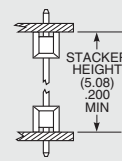
-S
= Single Row

-D
= Double Row

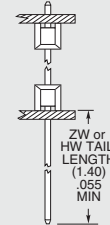
-T
= Triple Row

-Q
= Double Row .200" (5.08 mm) row space

-“XXX”
= Stacker Height (in inches) (5.08 mm) .200" minimum
Example: -250 = (6.35 mm) .250"



-“XXX”
= ZW or HW Tail Length (in inches) (1.40 mm) .055" minimum
Example: -250 = (6.35 mm) .250"



-F
= Gold flash on contact, Matte Tin on tail

-L
= 10 μ " (0.25 μ m) Gold on contact area of longer tail, Matte Tin on tail

-G
= 10 μ " (0.25 μ m) Gold on contact area of longer tail, Gold flash on balance

-T
= Matte Tin

-LL
= Locking Lead (Shortest dimension between the tail and the post is the end that will be crimped. Available on tails from (2.29 mm) .090" to (7.87 mm) .310" only.) Single row, 01 & 02 positions & -Q row not available

-“XXX”
= Polarized
Specify omitted pin position

Due to technical progress, all designs, specifications and components are subject to change without notice.

WWW.SAMTEC.COM

All parts within this catalog are built to Samtec's specifications.

Customer specific requirements must be approved by Samtec and identified in a Samtec customer-specific drawing to apply.

Mouser Electronics

Authorized Distributor

Click to View Pricing, Inventory, Delivery & Lifecycle Information:

[Samtec:](#)

[ZW-01-09-T-S-435-195](#)