

LOC		DIST		REVISIONS					
CG		00		P	LTR	DESCRIPTION	DATE	DWN	APVD
				A		REV PER ECO-08-023966	26SEP08	CR	MP
				B		REV PER ECR-12-016892	29JAN2013	OL	SZ

1 PCB HOLE DIM:  
DRILLED HOLE = 0.70 ±0.02 mm  
FINISHED HOLE = 0.60 mm REF  
Cu THICKNESS = 0.025-0.050 mm WITH EITHER  
HASL Sn Pb = 0.004-0.015 mm OR  
IMMERSION Sn = 0.0005 mm MIN OR  
OSP = 0.0002-0.0005 mm OR  
IMMERSION Ag = 0.0001 mm  
OR  
DRILLED HOLE = 0.73 ±0.02 mm  
FINISHED HOLE = 0.65 mm REF  
Cu THICKNESS = 0.025-0.050 mm WITH  
IMMERSION Au/Ni = 0.0001-0.0005 Au OVER  
0.004-0.005 Ni

2 MATERIAL ;  
HOUSING - GLASS FILLED POLYESTER  
CONTACTS - COPPER ALLOY

3 FINISH: MATING AREA - MEETS PERFORMANCE REQUIREMENTS OF MICRO TCA.0 DRAFT SPECIFICATION.  
COMPLIANT PIN AREA - 0.5 um TIN OVER 1.27 um MIN NICKEL.

4. CONNECTOR MARKED WITH PART NUMBER AND DATE CODE.

5 DATUMS AND BASIC DIMENSIONS ESTABLISHED BY CUSTOMER.

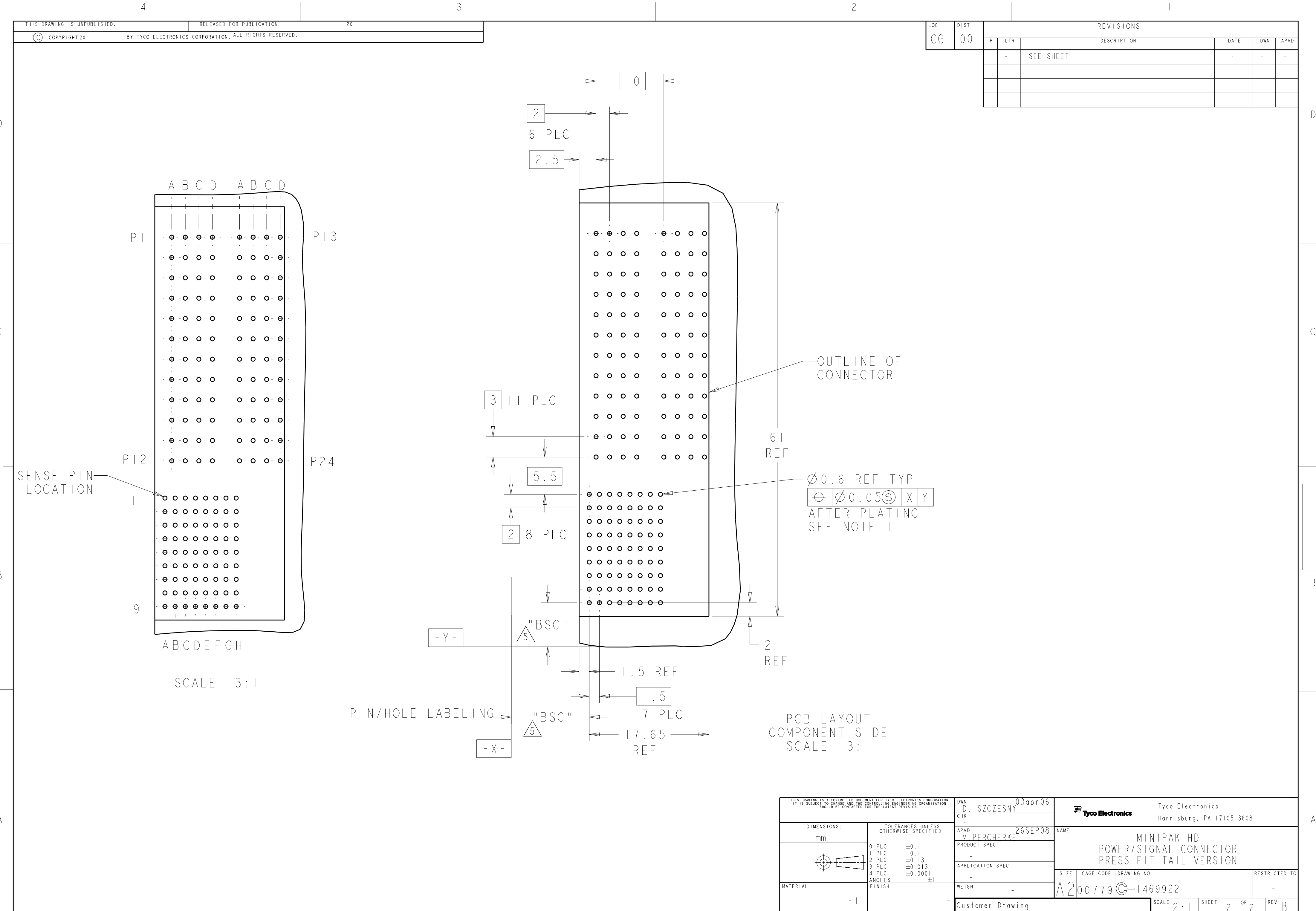
6. CONTACT AREA LUBRICATED WITH BELLCORE APPROVED LUBRICANT. TECHNICAL REFERENCE GR-1217-CORE, ISSUE 1, NOVEMBER 1995.

7 GROUND CONTACT POSITIONS P4 THRU P11 MATE FIRST.

8 FINISH: MATING AREA - MEETS PERFORMANCE REQUIREMENTS OF MICRO TCA.0 DRAFT SPECIFICATION.  
COMPLIANT PIN AREA - 0.5 um TIN-LEAD OVER 1.27 um MIN NICKEL.

OBSOLETE		GOLD/TIN LEAD 8		1469922-2
		GOLD/TIN 3		1469922-1
		PLATING		PART NUMBER

THIS DRAWING IS A CONTROLLED DOCUMENT FOR TYCO ELECTRONICS CORPORATION IT IS SUBJECT TO CHANGE AND THE CONTROLLING ENGINEERING ORGANIZATION SHOULD BE CONTACTED FOR THE LATEST REVISION.		DWN D. SZCZESNY 03apr06		Tyco Electronics Harrisburg, PA 17105-3608	
DIMENSIONS: mm		CHK -		NAME	
		APVD M. PERCHERKE 26SEP08		PRODUCT SPEC	
				APPLICATION SPEC	
MATERIAL		WEIGHT		SIZE	
-1		-		A200779	
		Customer Drawing		RESTRICTED TO	
				SCALE 2:1	
				SHEET 1 OF 2	
				REV B	



# Mouser Electronics

Authorized Distributor

Click to View Pricing, Inventory, Delivery & Lifecycle Information:

[TE Connectivity:](#)

[1469922-1](#)