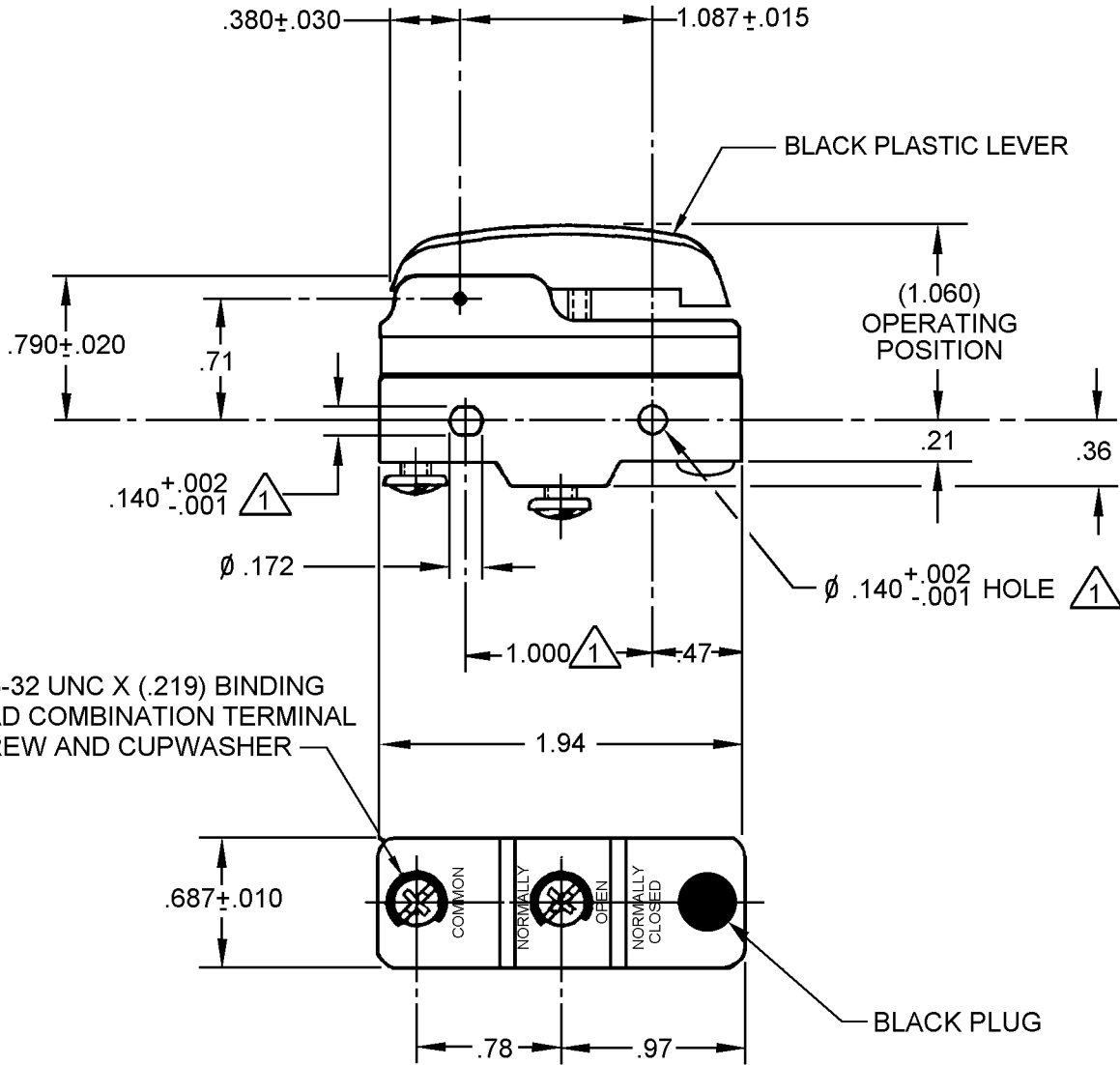


CATALOG LISTING  
YZ-2RW84328-A2  
PAGE 1 OF 1  
REPLACES  
RELEASE NO. SR-11650  
CHECK  
09JAN06  
30 MAY 02  
S A V  
CHECK  
30 MAY 02  
DRAWN  
G J W  
30 MAY 02

ISSUE  
**M**  
9



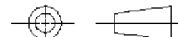
2X 6-32 UNC X (.219) BINDING HEAD COMBINATION TERMINAL SCREW AND CUPWASHER

NOTE  
⚠ MOUNTING HOLES WILL ACCEPT PINS OR SCREWS OF  $\phi .139$  MAX ON  $1.000 \pm .002$  CENTERS

ANSI Y14.5M-1982 APPLIES

THIS DRAWING COVERS A PROPRIETARY ITEM AND IS THE PROPERTY OF MICRO SWITCH, A DIVISION OF HONEYWELL. THIS DRAWING IS NOT TO BE COPIED OR USED WITHOUT THE APPROVAL OF MICRO SWITCH.

THIRD ANGLE PROJECTION



| CHARACTERISTICS | ELECTRICAL DATA<br>CONTACT ARRANGEMENT<br>S P N O  | SCALE FULL                                | DO NOT SCALE PRINT |
|-----------------|--|---|--------------------|
|                 |  | UNLESS OTHERWISE SPECIFIED TOLERANCES ARE |                    |
|                 | L96<br>15A 125, 250 OR 480 VAC<br>1/8HP 125 VAC, 1/4HP 250 VAC<br>1/2A 125 VDC, 1/4A 250 VDC | ONE PLACE (.0)                            | ±.030              |
|                 |  | TWO PLACE (.00)                           | ±.015              |
|                 |  | THREE PLACE (.000)                        | ±.005              |
|                 |  | ANGLES                                    | ±                  |
|                 |  | WEIGHT                                    |                    |

RASTER  
DRAWN  
G J W  
30 MAY 02



16A 250V  $\sim$  T85 5E4

# Mouser Electronics

Authorized Distributor

Click to View Pricing, Inventory, Delivery & Lifecycle Information:

[Honeywell:](#)

[YZ-2RW84328-A2](#)