

4 Pole
With Ground
PROTECTION
IP65
RATING



**Component
Parts**

Pre-Assembled Units

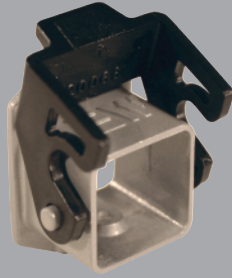
Covers

**FEMALE
Insert**



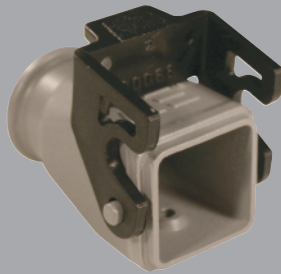
29010

**Bulkhead
Housing**



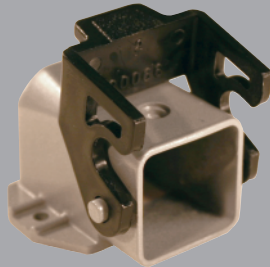
29013

Hood

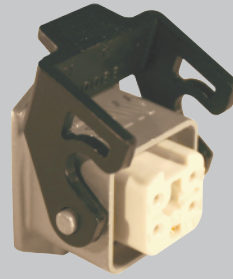


29015
29015M

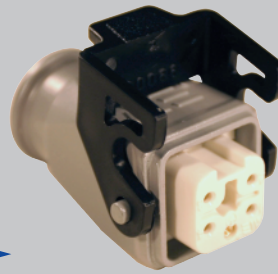
**Surface Mount
Housing**



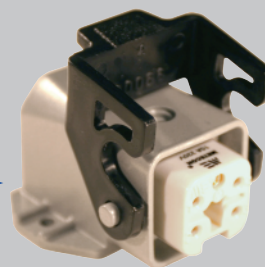
29014



403010



403015
403015M



403012



29640

Standard Part Numbers are
NPT threads.
Part numbers with an "M"
are metric thread.

**MALE
Insert**



29011

Hood



29017
29017M



403017
403017M



29642



Connectors should not be coupled
and decoupled under electrical load.

Inserts

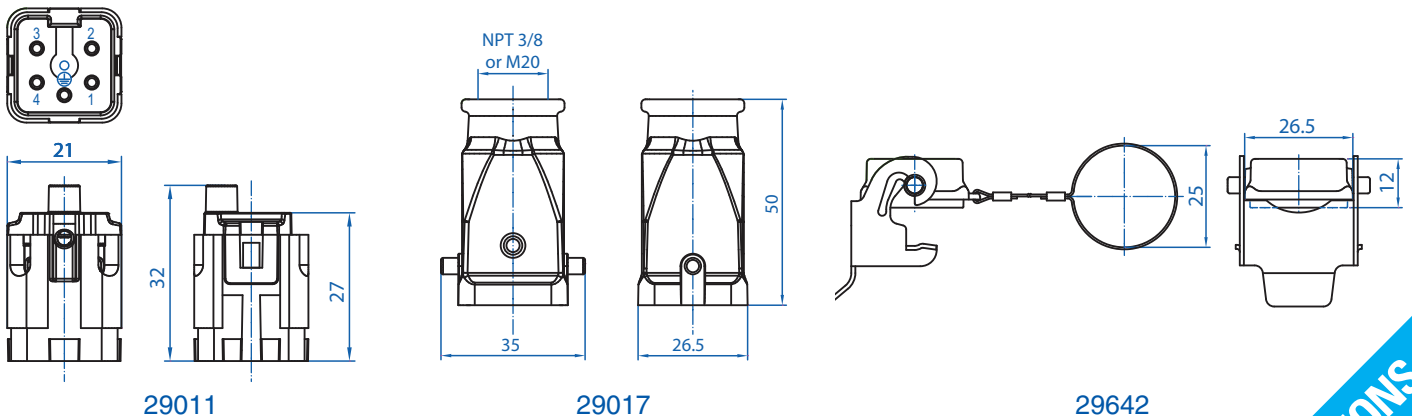
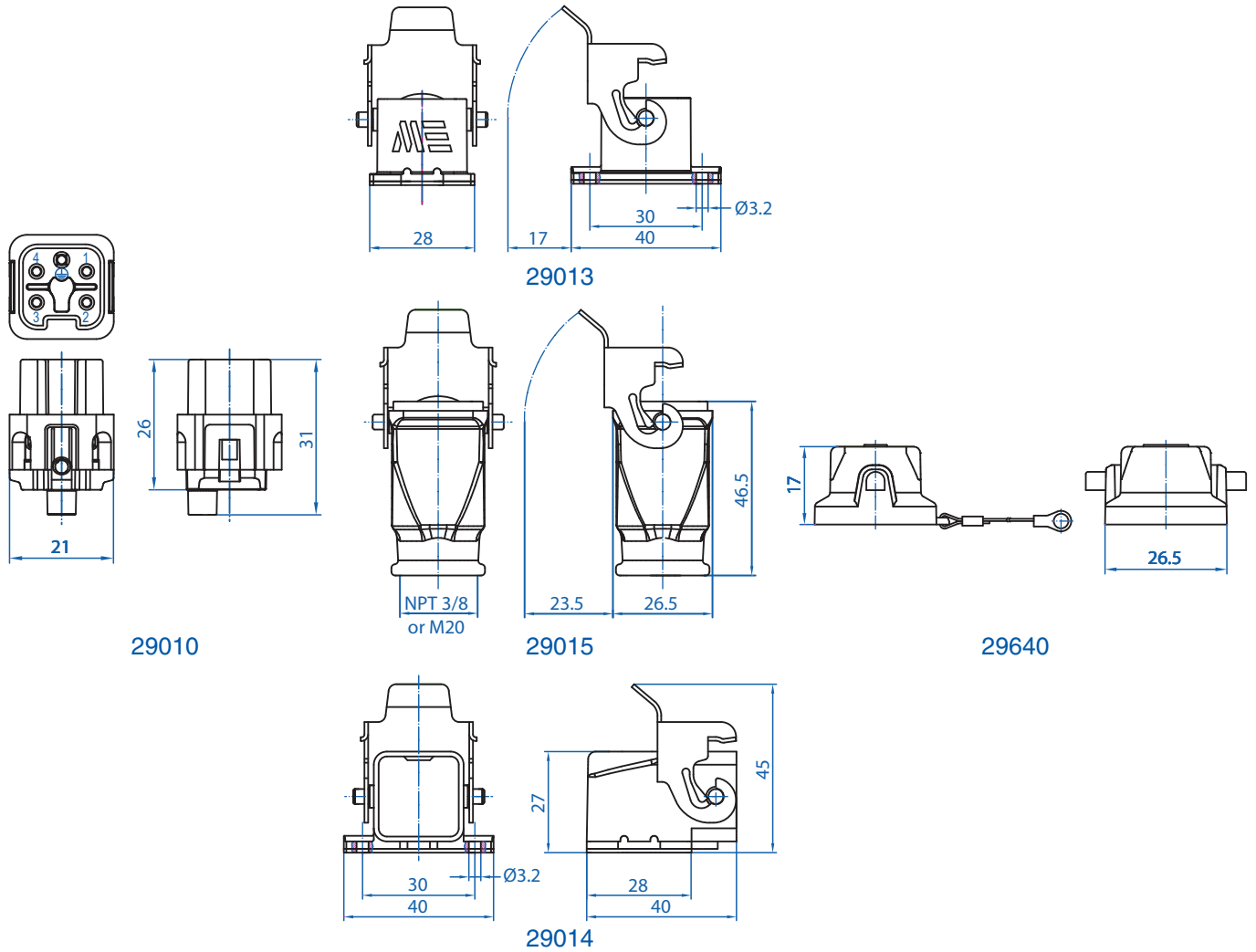
Number of contacts	4 Pole w/ ground
Electrical data to DIN EN61 984	10A 240V 6KV 3
Current	10A
Voltage	240V
Rated Impulse Voltage	6KV
Insulation Resistance	≥10 ¹⁰ Ω
Temperature Range	-40 to 125°C
Flammability	UL94-V0

Contacts

Screw terminal	
Material	Copper alloy
Surface plated	hard-silver
Contact resistance	≤ 1m Ω
Wire size	2.5mm ² / 14 AWG
Torque	0.5Nm
Stripping Length	7.5mm

Metal Hoods & Housings

Material	Aluminum
Surface	Powder coated
Seals	NBR
Degree of Protection Acc To	IP65
DIN EN60529 for coupled connectors	IP65
Thread Size	NPT 3/8" or M20



Connectors should not be coupled and decoupled under electrical load.

All dimensions are shown in millimeters. To convert to inches divide by 25.4.

Mouser Electronics

Authorized Distributor

Click to View Pricing, Inventory, Delivery & Lifecycle Information:

Altech:

[29010](#) [29011](#) [29013](#) [29014](#) [29015](#) [29017](#) [29640](#) [29642](#) [403010](#) [403012](#) [403015](#) [403017](#) [29015M](#) [29017M](#)
[403015M](#) [403017M](#) [403090](#) [403093](#)