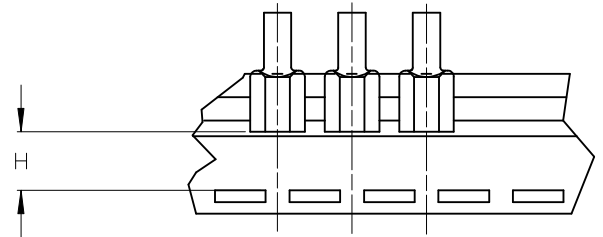
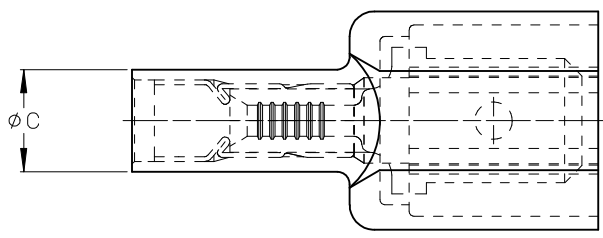
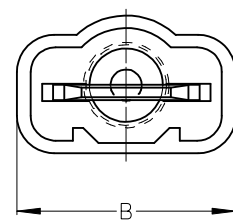
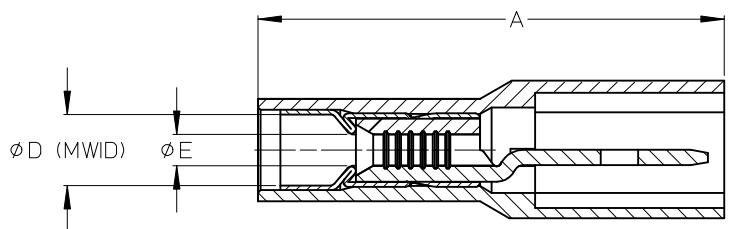


ASSEMBLY NUMBER		TAPE NUMBER		ITEM DESCRIPTION			DIMENSIONS					
MATERIAL NUMBER	ENGINEERING NUMBER	MATERIAL NUMBER	TAPE ENG. NUMBER	COLOR	WIRE GAUGE	TAB SIZE	'A' MAX	'B' MAX	'C' MAX	'D' MIN	'E' MIN	'H' REF
190010001	AA-5260	190010002	AA-5260T	RED	22-18AWG (0.38-0.96mm <sup>2</sup> )	.250 x .032 (6.35 x 0.81)	.96/24.4	.45/11.4	.22/5.6	.140/3.56	.054/1.37	.43/10.9
190010003	AA-5266	190010005	AA-5266T	RED	22-18AWG (0.38-0.96mm <sup>2</sup> )	.187 x .020 (4.75 x 0.51)	.90/22.9	.38/9.7	.22/5.6	.140/3.56	(A2) .054/1.37	.47/11.9
190010006	BB-5262	190010007	BB-5262T	BLUE	16-14 AWG (1.23-1.94mm <sup>2</sup> )	.250 x .032 (6.35 x 0.81)	.96/24.4	.45/11.4	.25/6.4	.170/4.32	(A2) .084/2.13	.43/10.9
190010008	BB-5268	190010009	BB-5268T	BLUE	16-14 AWG (1.23-1.94mm <sup>2</sup> )	.187 x .020 (4.75 x 0.51)	.90/22.9	.38/9.7	.25/6.4	.170/4.32	.084/2.13	.47/11.9



TAPE MOUNTING DETAIL



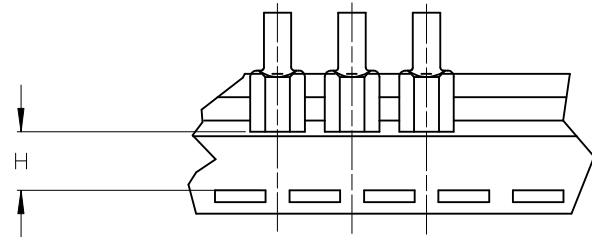
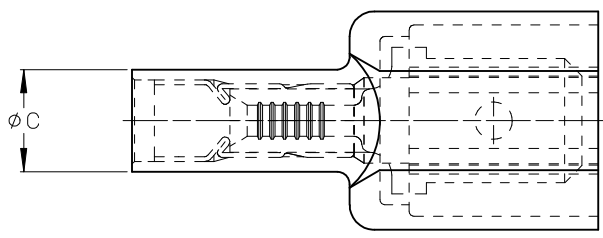
- NOTES:
1. TERMINAL MATERIAL: BRASS
  2. TERMINAL PLATING: ZINC CHROMATE
  3. HOUSING: 6/6 NYLON
  4. MWID: MAXIMUM WIRE INSULATION DIAMETER
  5. TAB DIMENSIONS CONFORM TO UL310 SPECIFICATIONS.
  6. ASSEMBLY IS ROHS COMPLIANT

<b>TYPO 'D' DIMENSION</b> EC NO: IPG2015-0139 DRAWN: GROSASO1 2014/07/21 CHKD: JMACNEIL 2014/07/21 APPR: JMACNEIL 2014/08/06	QUALITY SYMBOLS ▽=0 ▽=0	GENERAL TOLERANCES (UNLESS SPECIFIED) <table border="1"> <thead> <tr> <th></th> <th>mm</th> <th>INCH</th> </tr> </thead> <tbody> <tr> <td>4 PLACES</td> <td>± ---</td> <td>± ---</td> </tr> <tr> <td>3 PLACES</td> <td>± ---</td> <td>± .005</td> </tr> <tr> <td>2 PLACES</td> <td>± 0.13</td> <td>± .01</td> </tr> <tr> <td>1 PLACE</td> <td>± 0.25</td> <td>± ---</td> </tr> <tr> <td colspan="3">ANGULAR ± ---°</td> </tr> </tbody> </table>		mm	INCH	4 PLACES	± ---	± ---	3 PLACES	± ---	± .005	2 PLACES	± 0.13	± .01	1 PLACE	± 0.25	± ---	ANGULAR ± ---°			DIMENSION STYLE <b>IN/MM</b>	SCALE <b>4:1</b>	DESIGN UNITS <b>INCH</b>	THIRD ANGLE PROJECTION
		mm	INCH																					
	4 PLACES	± ---	± ---																					
	3 PLACES	± ---	± .005																					
2 PLACES	± 0.13	± .01																						
1 PLACE	± 0.25	± ---																						
ANGULAR ± ---°																								
DRAWN BY RCM	DATE 1990/05/11	TITLE <b>AVIKRIMP FULLY INSULATED MALE TABS</b>																						
CHECKED BY RDEROSS	DATE 1990/05/11	<b>MOLEX INCORPORATED</b>																						
APPROVED BY RDEROSS	DATE 1990/05/11	MATERIAL NO. <b>SEE CHART</b>	DOCUMENT NO. <b>SD-19001-003</b>	SHEET NO. <b>1 OF 1</b>																				

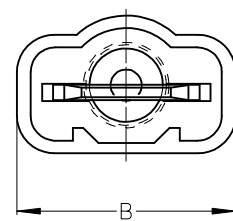
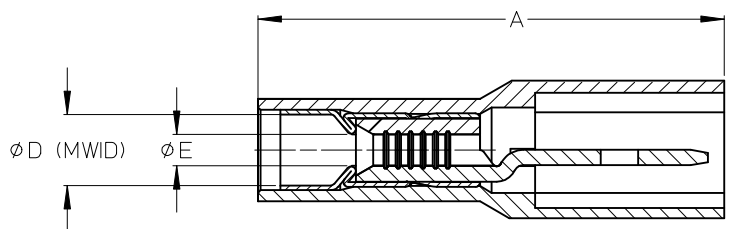
DRAFT WHERE APPLICABLE MUST REMAIN WITHIN DIMENSIONS

THIS DRAWING CONTAINS INFORMATION THAT IS PROPRIETARY TO MOLEX INCORPORATED AND SHOULD NOT BE USED WITHOUT WRITTEN PERMISSION

ASSEMBLY NUMBER		TAPE NUMBER		ITEM DESCRIPTION			DIMENSIONS					
MATERIAL NUMBER	ENGINEERING NUMBER	MATERIAL NUMBER	TAPE ENG. NUMBER	COLOR	WIRE GAUGE	TAB SIZE	'A' MAX	'B' MAX	'C' MAX	'D' MIN	'E' MIN	'H' REF
190010001	AA-5260	190010002	AA-5260T	RED	22-18AWG (0.38-0.96mm <sup>2</sup> )	.250 x .032 (6.35 x 0.81)	.96/24.4	.45/11.4	.22/5.6	.140/3.56	.054/1.37	.43/10.9
190010003	AA-5266	190010005	AA-5266T	RED	22-18AWG (0.38-0.96mm <sup>2</sup> )	.187 x .020 (4.75 x 0.51)	.90/22.9	.38/9.7	.22/5.6	.140/3.56	(A2).054/1.37	.47/11.9
190010006	BB-5262	190010007	BB-5262T	BLUE	16-14 AWG (1.23-1.94mm <sup>2</sup> )	.250 x .032 (6.35 x 0.81)	.96/24.4	.45/11.4	.25/6.4	.170/4.32	(A2).084/2.13	.43/10.9
190010008	BB-5268	190010009	BB-5268T	BLUE	16-14 AWG (1.23-1.94mm <sup>2</sup> )	.187 x .020 (4.75 x 0.51)	.90/22.9	.38/9.7	.25/6.4	.170/4.32	.084/2.13	.47/11.9



TAPE MOUNTING DETAIL



- NOTES:
1. TERMINAL MATERIAL: BRASS
  2. TERMINAL PLATING: ZINC CHROMATE
  3. HOUSING: 6/6 NYLON
  4. MWID: MAXIMUM WIRE INSULATION DIAMETER
  5. TAB DIMENSIONS CONFORM TO UL310 SPECIFICATIONS.
  6. ASSEMBLY IS ROHS COMPLIANT

<b>TYPO 'D' DIMENSION</b> EC NO: IPG2015-0139 DRAWN: GROSASO1 2014/07/21 CHKD: JMACNEIL 2014/07/21 APPR: JMACNEIL 2014/08/06 <b>A2</b>	<b>QUALITY SYMBOLS</b> ▽=0 ▽=0	<b>GENERAL TOLERANCES (UNLESS SPECIFIED)</b> <table border="1"> <thead> <tr> <th></th> <th>mm</th> <th>INCH</th> </tr> </thead> <tbody> <tr> <td>4 PLACES</td> <td>± ---</td> <td>± ---</td> </tr> <tr> <td>3 PLACES</td> <td>± ---</td> <td>± .005</td> </tr> <tr> <td>2 PLACES</td> <td>± 0.13</td> <td>± .01</td> </tr> <tr> <td>1 PLACE</td> <td>± 0.25</td> <td>± ---</td> </tr> <tr> <td colspan="3">ANGULAR ± ---°</td> </tr> </tbody> </table>		mm	INCH	4 PLACES	± ---	± ---	3 PLACES	± ---	± .005	2 PLACES	± 0.13	± .01	1 PLACE	± 0.25	± ---	ANGULAR ± ---°			<b>DIMENSION STYLE</b> IN/MM DRAWN BY: RCM DATE: 1990/05/11 CHECKED BY: RDEROSS DATE: 1990/05/11 APPROVED BY: RDEROSS DATE: 1990/05/11	<b>SCALE</b> 4:1 <b>DESIGN UNITS</b> INCH <b>THIRD ANGLE PROJECTION</b>	<b>TITLE</b> AVIKRIMP FULLY INSULATED MALE TABS <b>MOLEX INCORPORATED</b> DOCUMENT NO. SD-19001-003 SHEET NO. 1 OF 1
		mm	INCH																				
	4 PLACES	± ---	± ---																				
	3 PLACES	± ---	± .005																				
2 PLACES	± 0.13	± .01																					
1 PLACE	± 0.25	± ---																					
ANGULAR ± ---°																							
DRAFT WHERE APPLICABLE MUST REMAIN WITHIN DIMENSIONS		<b>SEE CHART</b>	THIS DRAWING CONTAINS INFORMATION THAT IS PROPRIETARY TO MOLEX INCORPORATED AND SHOULD NOT BE USED WITHOUT WRITTEN PERMISSION																				
		MATERIAL NO.																					
		SIZE B																					