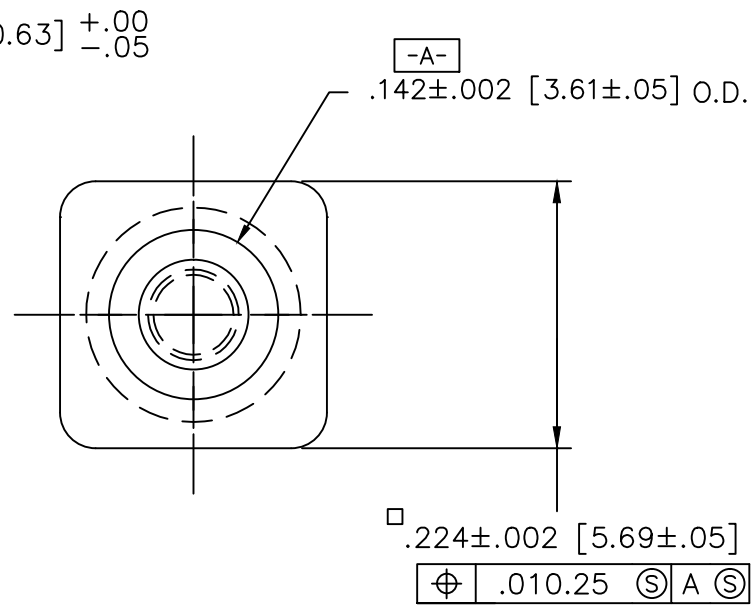
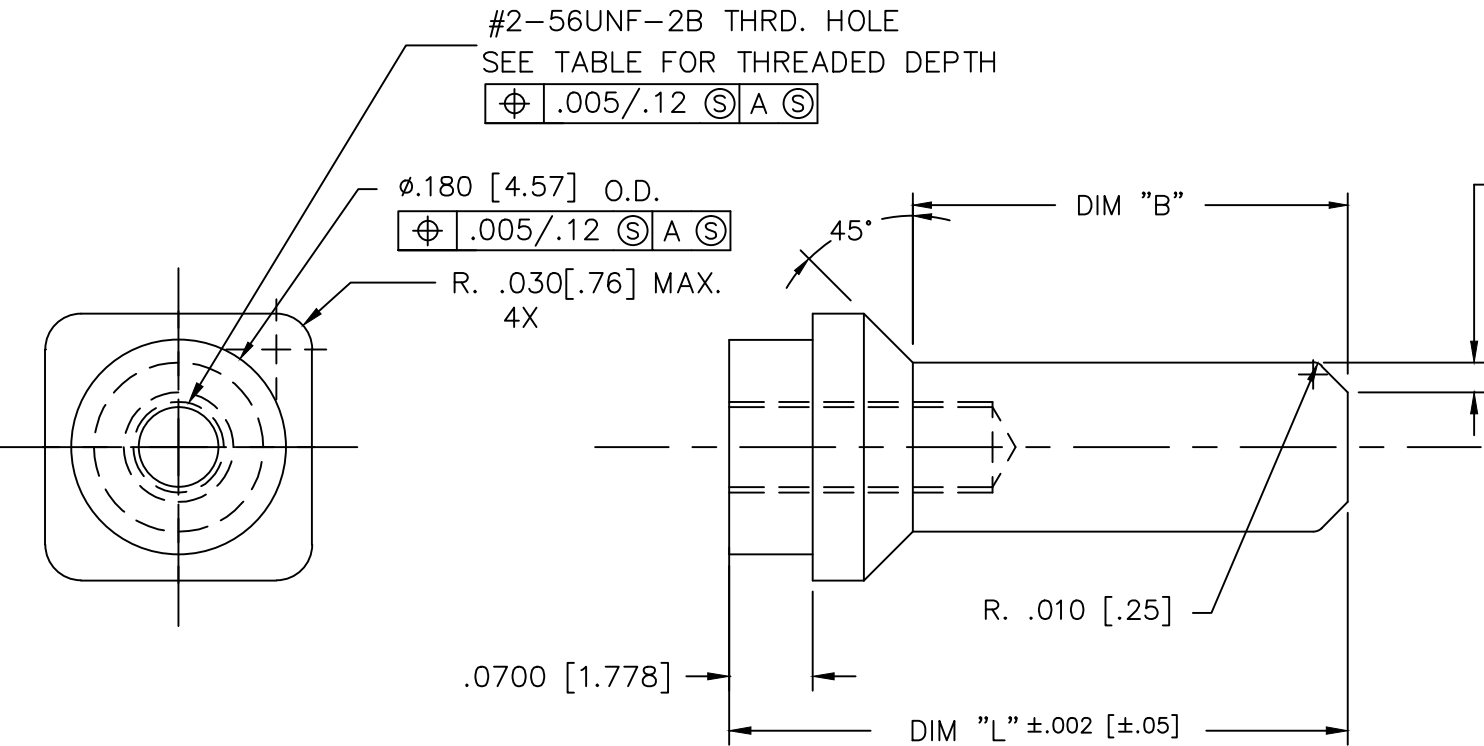




FCIconnect.com




Copyright FCI

PRODUCT NUMBER(PLATED)	DIM B	DIM L	MATING SOCKET PART NUMBERS	THREADED DEPTH	PRODUCT NUMBER(UNPLATED)
50271-001	.227/5.77	.382/9.70	90306,91506	.165/4.19 MIN.	50271-001U
50271-001LF	.227/5.77	.382/9.70	90306,91506	.165/4.19 MIN.	
50271-002	.296/7.52	.451/11.45	90306,91506	.165/4.19 MIN.	50271-002U
50271-002LF	.296/7.52	.451/11.45	90306,91506	.165/4.19 MIN.	
50271-003	.365/9.27	.520/13.20	90306,91506	.165/4.19 MIN.	50271-003U
50271-003LF	.365/9.27	.520/13.20	90306,91506	.165/4.19 MIN.	
50271-004	.296/7.52	.451/11.45	90306,91506	.250/6.35 MIN.	50271-004U
50271-004LF	.296/7.52	.451/11.45	90306,91506	.250/6.35 MIN.	



NOTES:

- MATERIAL: PHOS BRONZE
- PLATING: 30u"/.76u MIN Au OVER
50u"/1.27u MIN Ni
- UNSPECIFIED ANGLES - 45°.
- VARIATIONS SHOWN ON THIS PRINT ARE "STANDARD" PIN LENGTHS. SEE P/N 91409 FOR "SPECIAL" PIN LENGTHS.
- SURFACE FINISH IN CONTACT AREA NOT TO EXCEED 25 RMS.
- PRODUCT NUMBERS WITH AN LF SUFFIX MEET EUROPEAN UNION DIRECTIVES AND OTHER COUNTRY REGULATIONS AS DESCRIBED IN GS-22-008.
- THIS PRODUCT IS NOT INTENDED TO BE EXPOSED TO MANUFACTURING SOLDER PROCESSES.

mat'l. code				surface ISO 1302			tolerance ISO 406 ISO 1101			projection 			product family HPC																																																																																																																																																																																																																																																																																																																																																																																																																																																																																																																																																																																																																																																																																																																																																																																																																																																																																																																																																																																																																																																																																																																																																																																																																																																																																																																																																																																																																																
ltr	ecn no	dr	date	tolerances unless otherwise specified									INCH/MM 			title POWER PIN SCREW MOUNT																																																																																																																																																																																																																																																																																																																																																																																																																																																																																																																																																																																																																																																																																																																																																																																																																																																																																																																																																																																																																																																																																																																																																																																																																																																																																																																																																																																																																													
L	110-0118	SAL	20/05/10	angles	linear	.XX±.01/.3																																																																																																																																																																																																																																																																																																																																																																																																																																																																																																																																																																																																																																																																																																																																																																																																																																																																																																																																																																																																																																																																																																																																																																																																																																																																																																																																																																																																																																							
M	ELX-I-010828	MJA	19/03/12			.XXX±.005/.13																																																																																																																																																																																																																																																																																																																																																																																																																																																																																																																																																																																																																																																																																																																																																																																																																																																																																																																																																																																																																																																																																																																																																																																																																																																																																																																																																																																																																																							
N	ELX-I-010932	MJA	22/03/12			0°±2°		.xxx±.0020/.051				scale 1:1																																																																																																																																																																																																																																																																																																																																																																																																																																																																																																																																																																																																																																																																																																																																																																																																																																																																																																																																																																																																																																																																																																																																																																																																																																																																																																																																																																																																																																	
-	-	-	-	dr	D. SHEAFFER		3/27/92					dwg no			sheet 1 of 1						size																																																																																																																																																																																																																																																																																																																																																																																																																																																																																																																																																																																																																																																																																																																																																																																																																																																																																																																																																																																																																																																																																																																																																																																																																																																																																																																																																																																																																								
H	V05-0681	DAI	7/20/05	enr	S. CLARK		4/28/92					50271			A3																																																																																																																																																																																																																																																																																																																																																																																																																																																																																																																																																																																																																																																																																																																																																																																																																																																																																																																																																																																																																																																																																																																																																																																																																																																																																																																																																																																																																														
J	V05-1072	HTB	11/23/05	chr	S. CLARK		4/28/92																																																																																																																																																																																																																																																																																																																																																																																																																																																																																																																																																																																																																																																																																																																																																																																																																																																																																																																																																																																																																																																																																																																																																																																																																																																																																																																																																																																																																																						
K	M06-0265	AGS	7/10/06	appd	S. CLARK		4/28/92																																																																																																																																																																																																																																																																																																																																																																																																																																																																																																																																																																																																																																																																																																																																																																																																																																																																																																																																																																																																																																																																																																																																																																																																																																																																																																																																																																																																																																						
sheet index		revision sheet		N	1																																																																																																																																																																																																																																																																																																																																																																																																																																																																																																																																																																																																																																																																																																																																																																																																																																																																																																																																																																																																																																																																																																																																																																																																																																																																																																																																																																																																																																								</

Mouser Electronics

Authorized Distributor

Click to View Pricing, Inventory, Delivery & Lifecycle Information:

[FCI / Amphenol:](#)

[50271-002LF](#)