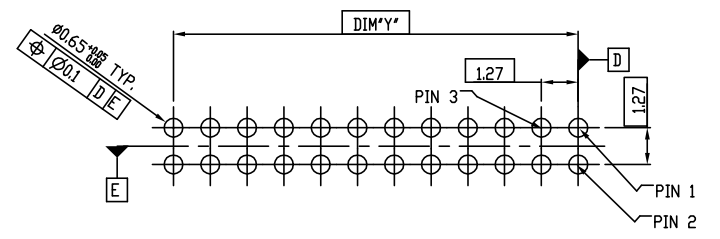
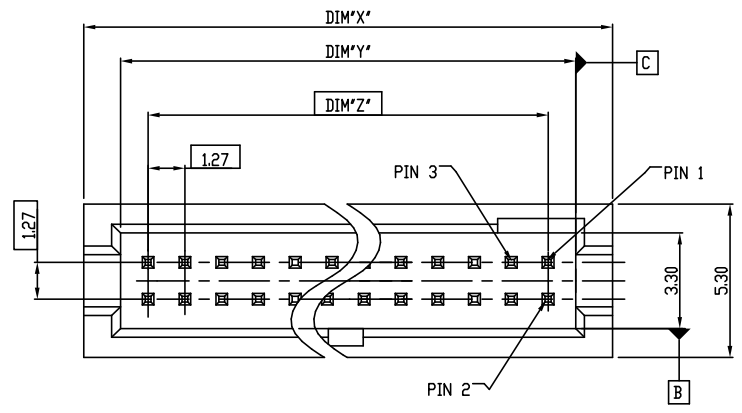
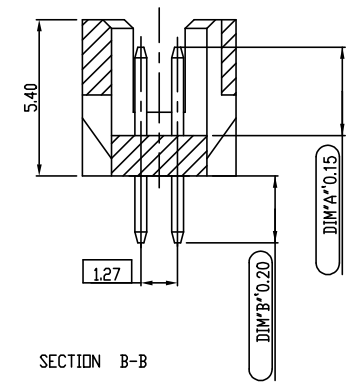
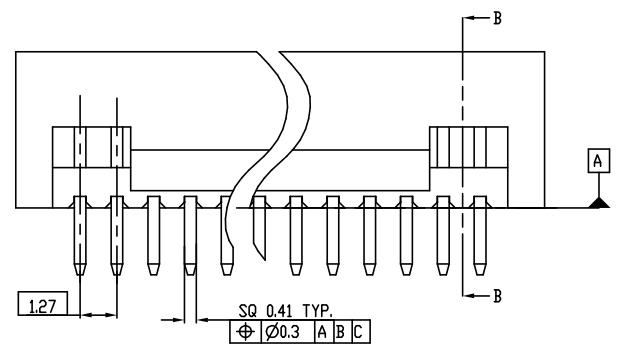


PART NO.
20021211



RECOMMENDED PCB LAYOUT
SCALE 5.000

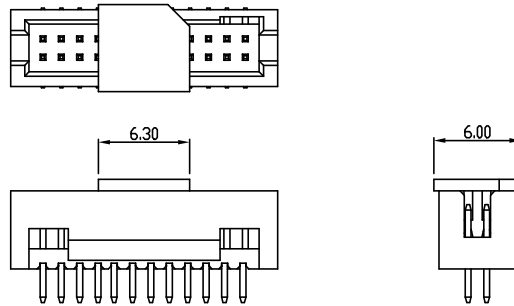


- NOTES:
 1.MATERIAL:
 HOUSING: HIGH TEMPERATURE THERMOPLASTIC, UL94-V0 BLACK.
 TERMINAL: COPPER ALLOY
 2.THE HOUSING WILL WITHSTAND EXPOSURE TO 260-C PEAK TEMPERATURE FOR 10 SECONDS IN A WAVE SOLDER OR VAPOR PHASE REFLOW OVEN.
 3.THIS PRODUCT MEETS EUROPEAN UNION DIRECTIVES AND OTHER COUNTRY REGULATIONS AS DESCRIBED IN GS-22-008.
 4.PRODUCT SPEC: GS-12-629
 5.PACKAGE SPEC: GS-14-1420
 6.20021211-00010CXLF FOR CUSTOMER SPECIFIED WITH PICK-UP CAP

mat'l. code		surface ISO 1302 ✓		tolerance ISO 406 ISO 1101		projection mm		product family MINITEK127®	
ltr	ecn no	dr	date	tolerances unless otherwise specified		mm		title	
G	ELX-N-23548	TIM	03/21/16	angles	.0±.30	mm		SHROUDED HDR VT TH	
H	ELX-N-30431	TONY	06/09/18	linear	.00±.20	mm			
				0°±2°	.000±.10	scale 1:1			
				dr	ZK HU	08/07/12			dwg no
				eng	ZK HU	08/07/12			sheet 1 of 2
				chr	BIAN RICK	08/07/12			size
				app	BIAN RICK	08/07/12			A3
sheet index	revision sheet	H	H					type Product Customer Drawing	
		1	2						

Amphenol FCI
 © 2016 AFCI

PART NO.	POS.	DIM*X'	DIM*Y'	DIM*Z'
20021211-XXX06XXLF	2 X 3	6.99	4.45	2.54
20021211-XXX08XXLF	2 X 4	8.26	5.72	3.81
20021211-XXX10XXLF	2 X 5	9.53	6.99	5.08
20021211-XXX12XXLF	2 X 6	10.80	8.26	6.35
20021211-XXX14XXLF	2 X 7	12.07	9.53	7.62
20021211-XXX16XXLF	2 X 8	13.34	10.80	8.89
20021211-XXX18XXLF	2 X 9	14.61	12.07	10.16
20021211-XXX20XXLF	2 X 10	15.88	13.34	11.43
20021211-XXX22XXLF	2 X 11	17.15	14.61	12.70
20021211-XXX24XXLF	2 X 12	18.42	15.88	13.97
20021211-XXX26XXLF	2 X 13	19.69	17.15	15.24
20021211-XXX28XXLF	2 X 14	20.96	18.42	16.51
20021211-XXX30XXLF	2 X 15	22.23	19.69	17.78
20021211-XXX32XXLF	2 X 16	23.50	20.96	19.05
20021211-XXX34XXLF	2 X 17	24.77	22.23	20.32
20021211-XXX36XXLF	2 X 18	26.04	23.50	21.59
20021211-XXX38XXLF	2 X 19	27.31	24.77	22.86
20021211-XXX40XXLF	2 X 20	28.58	26.04	24.13
20021211-XXX42XXLF	2 X 21	29.85	27.31	25.40
20021211-XXX44XXLF	2 X 22	31.12	28.58	26.67
20021211-XXX46XXLF	2 X 23	32.39	29.85	27.94
20021211-XXX48XXLF	2 X 24	33.66	31.12	29.21
20021211-XXX50XXLF	2 X 25	34.93	32.39	30.48
20021211-XXX52XXLF	2 X 26	36.20	33.66	31.75
20021211-XXX54XXLF	2 X 27	37.47	34.93	33.02
20021211-XXX56XXLF	2 X 28	38.74	36.20	34.29
20021211-XXX58XXLF	2 X 29	40.01	37.47	35.56
20021211-XXX60XXLF	2 X 30	41.28	38.74	36.83
20021211-XXX62XXLF	2 X 31	42.55	40.01	38.10
20021211-XXX64XXLF	2 X 32	43.82	41.28	39.37
20021211-XXX66XXLF	2 X 33	45.09	42.55	40.64
20021211-XXX68XXLF	2 X 34	46.36	43.82	41.91
20021211-XXX70XXLF	2 X 35	47.63	45.09	43.18
20021211-XXX72XXLF	2 X 36	48.90	46.36	44.45
20021211-XXX74XXLF	2 X 37	50.17	47.63	45.72
20021211-XXX76XXLF	2 X 38	51.44	48.90	46.99
20021211-XXX78XXLF	2 X 39	52.71	50.17	48.26
20021211-XXX80XXLF	2 X 40	53.98	51.44	49.53
20021211-XXX82XXLF	2 X 41	55.25	52.71	50.80
20021211-XXX84XXLF	2 X 42	56.52	53.98	52.07
20021211-XXX86XXLF	2 X 43	57.79	55.25	53.34
20021211-XXX88XXLF	2 X 44	59.06	56.52	54.61
20021211-XXX90XXLF	2 X 45	60.33	57.79	55.88
20021211-XXX92XXLF	2 X 46	61.60	59.06	57.15
20021211-XXX94XXLF	2 X 47	62.87	60.33	58.42
20021211-XXX96XXLF	2 X 48	64.14	61.60	59.69
20021211-XXX98XXLF	2 X 49	65.41	62.87	60.96
20021211-XXXA0XXLF	2 X 50	66.68	64.14	62.23



PRODUCT WITH CAP
SCALE 2.50

20021211 - X X X XX X X LF

- LEAD FREE
- PLATING OPTIONAL
- 1: GOLD FLASH AT CONTACT, 1.27um MIN. MATTE TIN AT TAIL
- 2: GOLD FLASH AT CONTACT, GOLD FLASH AT TAIL
- 4: 0.25um Au MIN. AT CONTACT, 1.27um MIN.MATTE TIN AT TAIL
- 5: 0.25um Au MIN. AT CONTACT, GOLD FLASH AT TAIL
- 6: 0.38um GXT MIN. AT CONTACT, 1.27um MIN.MATTE TIN AT TAIL
- 7: 0.38um GXT MIN. AT CONTACT, GOLD FLASH AT TAIL
- 8: 0.76um GXT MIN. AT CONTACT, 1.27um MIN.MATTE TIN AT TAIL
- 9: 0.76um GXT MIN. AT CONTACT, GOLD FLASH AT TAIL

- PACKING STYLE
- T: TUBE
- C: TAPE & REEL + CAP

- PIN NO. SEE TABLE
- MATING LENGTH(DIM*A*)
- 0: 3.05MM
- TAIL LENGTH(DIM*B*)
- 0: 2.30MM (FDR 1.6MM PCB)
- 1: 1.60MM (FDR 1.0MM PCB)
- 2: 2.70MM (FDR 2.0MM PCB)
- RESERVE CODE
- 0: STANDARD

mat'l. code		surface	tolerance	projection	product family
		ISO 1302 ✓	ISO 406 ISO	1101	MINITEK127®
ltr	ecn no	dr	date	title	
H				SHROUDED HDR VT TH	
		angles	linear	mm	
		0±2°	.0±.30 .00±.20 .000±.10	scale 1:1	
		dr	ZK HU	08/07/12	dwg no
		eng	ZK HU	08/07/12	sheet 2 of 2
		chr	BIAN RICK	08/07/12	size
		app	BIAN RICK	08/07/12	A3
sheet		revision	type Product Customer Drawing		
index		sheet			

Mouser Electronics

Authorized Distributor

Click to View Pricing, Inventory, Delivery & Lifecycle Information:

[FCI / Amphenol:](#)

[20021211-00006T1LF](#) [20021211-00010T1LF](#) [20021211-00012T1LF](#) [20021211-00014T1LF](#) [20021211-00016T1LF](#)
[20021211-00020T1LF](#) [20021211-00026T1LF](#) [20021211-00030T1LF](#) [20021211-00034T1LF](#) [20021211-00040T1LF](#)
[20021211-00044T1LF](#) [20021211-00050T1LF](#) [20021211-00060T1LF](#) [20021211-00064T1LF](#) [20021211-00068T1LF](#)
[20021211-00080T1LF](#) [20021211-000A0T1LF](#) [20021211-00006T4LF](#) [20021211-00010T4LF](#) [20021211-00012T4LF](#)
[20021211-00014T4LF](#) [20021211-00016T4LF](#) [20021211-00020T4LF](#) [20021211-00026T4LF](#) [20021211-00030T4LF](#)
[20021211-00034T4LF](#) [20021211-00040T4LF](#) [20021211-00044T4LF](#) [20021211-00050T4LF](#) [20021211-00060T4LF](#)
[20021211-00064T4LF](#) [20021211-00068T4LF](#) [20021211-00080T4LF](#) [20021211-000A0T4LF](#) [20021211-00006T8LF](#)
[20021211-00010T8LF](#) [20021211-00012T8LF](#) [20021211-00014T8LF](#) [20021211-00016T8LF](#) [20021211-00020T8LF](#)
[20021211-00026T8LF](#) [20021211-00030T8LF](#) [20021211-00034T8LF](#) [20021211-00040T8LF](#) [20021211-00044T8LF](#)
[20021211-00050T8LF](#) [20021211-00060T8LF](#) [20021211-00064T8LF](#) [20021211-00068T8LF](#) [20021211-00080T8LF](#)
[20021211-000A0T8LF](#) [20021211-00010C4LF](#) [20021211-00008T1LF](#) [20021211-00010C1LF](#) [20021211-00008T4LF](#)
[20021211-02040T8LF](#) [20021211-00016C4LF](#)