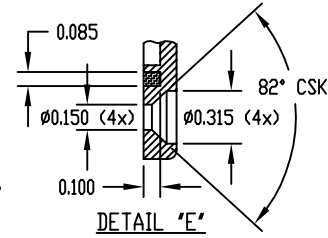
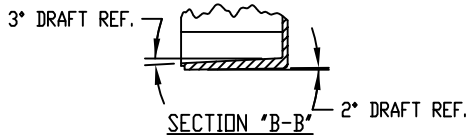
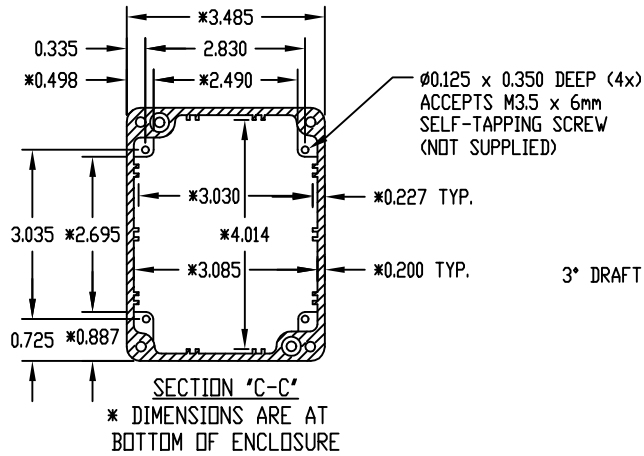


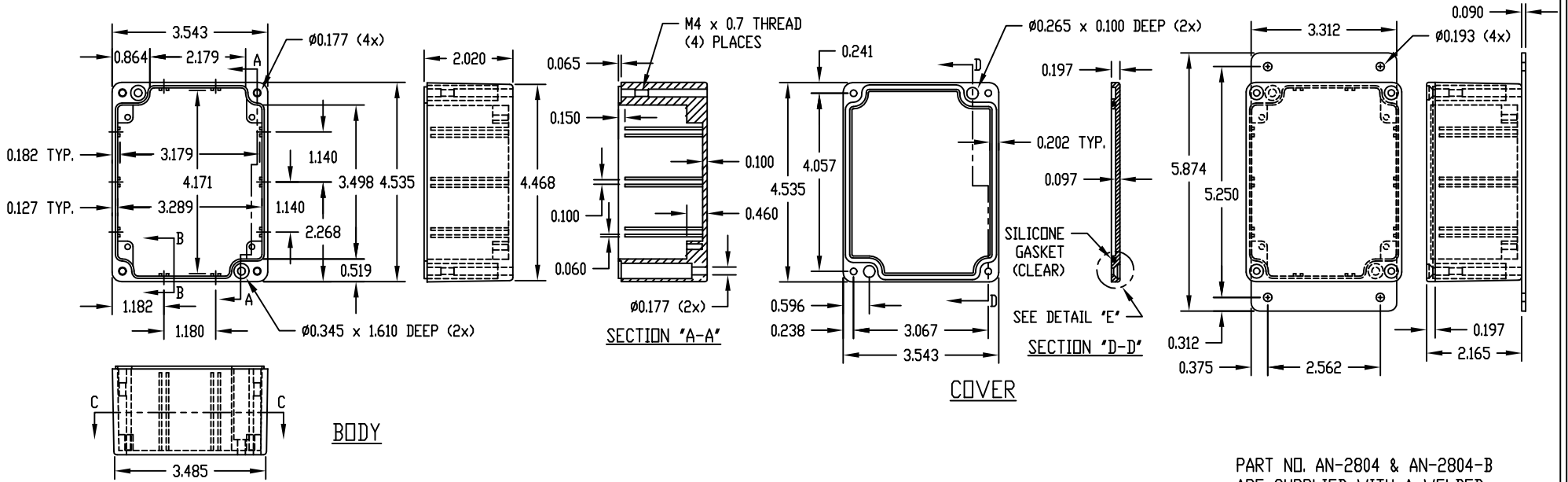
PART NAME	NEMA 4X DIE CAST ALUMINUM ENCLOSURE	PART No.	AN-1304, AN-1304-G, AN-2804 & AN-2804-B	REV. DATE	12-17-08
-----------	-------------------------------------	----------	---	-----------	----------



MATERIAL: ALUMINUM ALLOY #ADC-12

FINISH: NATURAL (NO SUFFIX)  
 GRAY (SUFFIX -G)  
 SMOOTH BLACK (SUFFIX -B)

- NOTES:  
 1) FOUR (4) M4 x 20mm (0.787") LG. SCREWS SUPPLIED FOR ASSEMBLY OF COVER TO BODY.  
 2) ALL HOLE DIAMETERS HAVE ±0.005 TOLERANCE  
 ALL OTHER DIMENSIONS HAVE ±0.015 TOLERANCE



PART NO. AN-2804 & AN-2804-B ARE SUPPLIED WITH A WELDED ON MOUNTING BRACKET ONLY.

# Mouser Electronics

Authorized Distributor

Click to View Pricing, Inventory, Delivery & Lifecycle Information:

[Bud Industries:](#)

[AN-1304-G](#) [AN-1304](#) [AN-2804](#) [AN-2804-B](#)