

**PRODUCT NUMBER**

89898-YXXZHFLF

RoHS COMPATIBLE, SEE NOTE 6

OPTION LETTERS, NOTE 1b, OMIT FROM PRODUCT NUMBER IF NOT APPLICABLE

A=PRODUCT WITH GREY PICK UP CAP IN TAPE & REEL, SEE TA-856.

AV=PRODUCT WITH GREY PICK UP CAP IN TAPE & REEL

FOR CUSTOMER DEDICATED PART, SEE TA-856.

B=PRODUCT WITH PICK UP CAP PACKED IN TUBE.

G=PRODUCT WITH BLACK PICK UP CAP IN TAPE & REEL, SEE TA-856.

K=PRODUCT WITHOUT PICK UP CAP IN TAPE & REEL, SEE TA-856

NUMBER OF POSITIONS PER ROW: 02 TO 30.  
OVER THAN 30 POSITIONS ON SPECIAL REQUEST.

**PLATING CODE**

3= 0.76µm GOLD ON CONTACT AREA.

2µm MIN MATTE TIN ON TAIL.

4= 2µm MIN MATTE TIN FULL PLATED

1.27µm Ni MIN UNDERPLATING

**NOTES:**

- 1a- HOUSING & PICK UP CAP MAT'L: THERMOPLASTIC GLASS FILLED FLAME RETARDANT PER UL 94 V-0 COLOR: GREY.
- b- HIGH TEMPERATURE PLASTIC 30% GLASS REINFORCED NON HALOGEN FLAME RETARDED MOLDING COMPOUND COLOR BLACK.

- 2 - TERMINAL MATERIAL: PHOSPHOR BRONZE.
- 3 - PACKAGING:  
2 UP TO 4 POSITIONS PRODUCT PACKED IN PLASTIC BOX.  
5 UP TO 30 POSITIONS PRODUCT PACKED IN TUBE.  
WHOLE 89898-304B PACKED IN TUBE.

- 4 - TO DETERMINE DIMENSIONS:  
N = NUMBER OF POSITIONS PER ROW  
EXAMPLE: 8 POS: (N×2.54)-0.08=20.24 mm.
- 5 - RECOMMENDED IR PROFILE PER TA842.

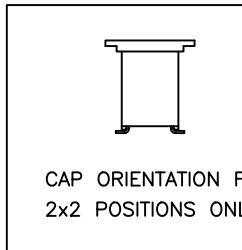
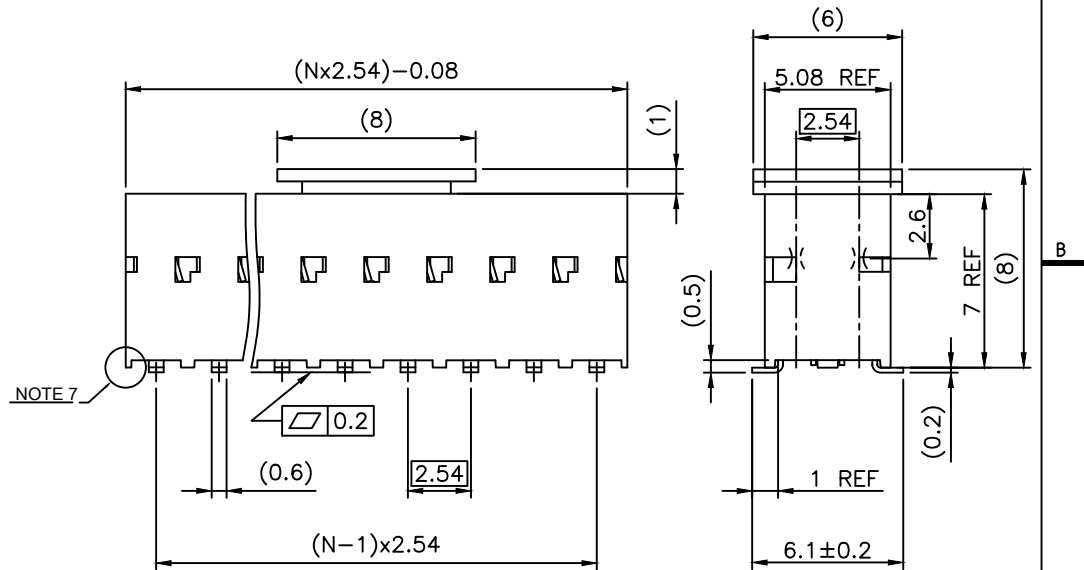
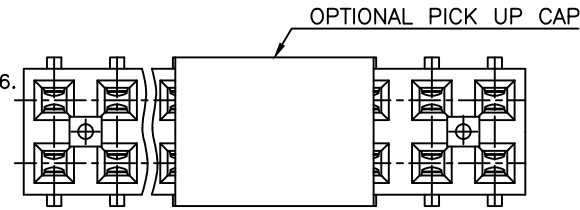
**6 - RoHS COMPATIBLE PRODUCT SPECIFICATIONS**

- a - **PLATING:**  
- "LF" MEANS THE PRODUCT IS LEAD-FREE,  
2µm MINIMUM MATTE TIN OVER 1.27µm MINIMUM NICKEL UNDERPLATE.
- b - **MANUFACTURING PROCESS COMPATIBILITY**  
- THE HOUSING WILL WITHSTAND EXPOSURE TO 260°C PEAK TEMPERATURE FOR 30 SECONDS MAX IN A CONVECTION INFRA-RED OR VAPOR PHASE OR REFLOW OVEN.

- c - **LABELING:**  
- MEETS PACKAGING SPECS AS PER GS-14-920

- d - **LEGAL STATEMENT:** SEE GS-47-0004

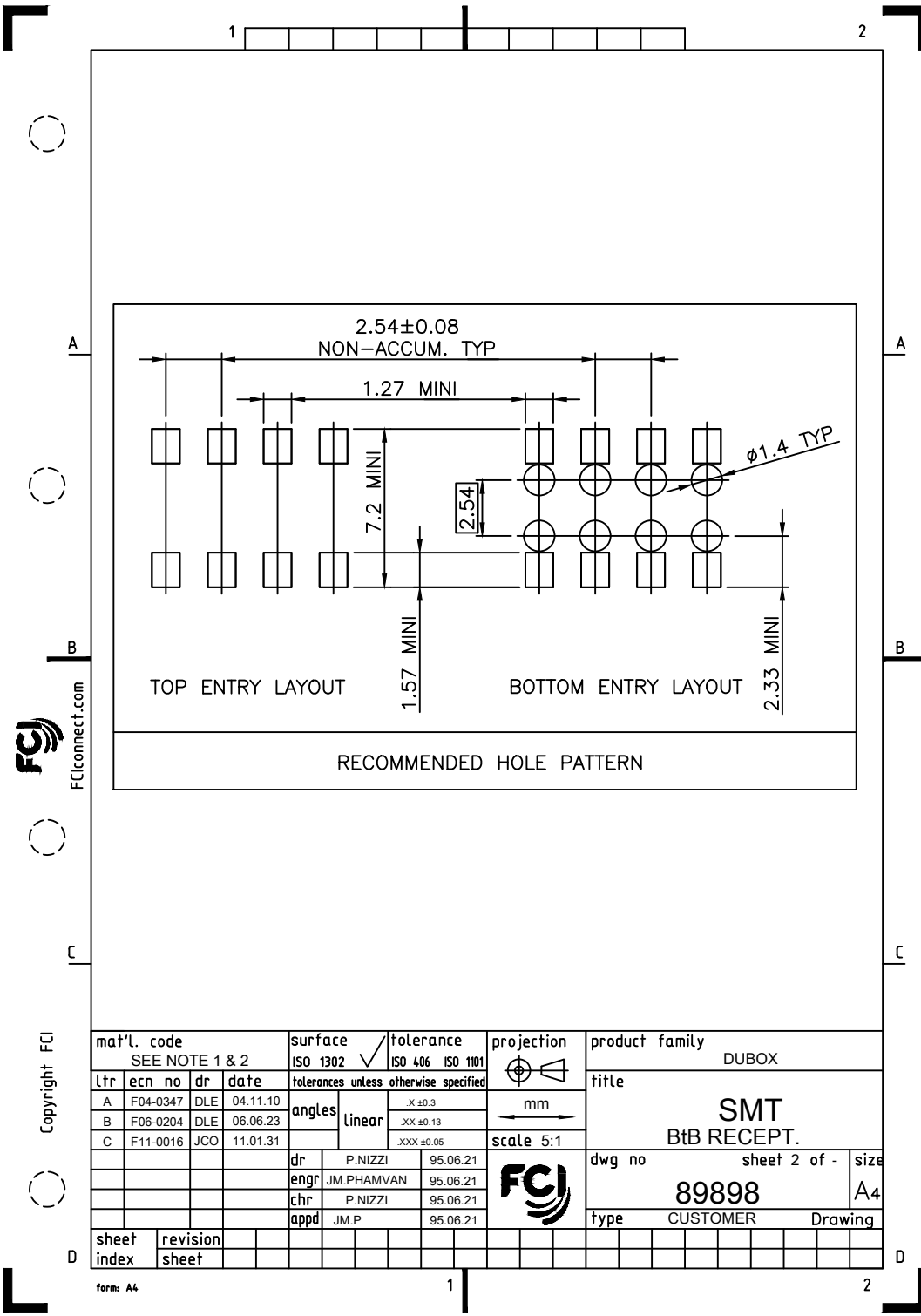
- 7 - END STAND-OFFS FOR 2x2 UP TO 2x4 POS  
NO END STAND-OFFS FOR 2x5 UP TO 2x50 POS



CAP ORIENTATION FOR 2x2 POSITIONS ONLY

mat'l. code SEE NOTE 1 & 2		surface ISO 1302 ✓		tolerance ISO 406 ISO 1101		projection mm		product family DUBOX	
lfr ecn no dr date		tolerances unless otherwise specified		angles Linear		scale 5:1		title SMT BtB RECEPT.	
AE	F12-0047	JCO	12.07.16					sheet 1 of 2 size	
AF	B-18748	LMU	14.09.04					89898 A3	
AG	B-19123	LMU	14.10.21					type CUSTOMER Drawing	
AH	F-24429	AMA	16.07.01	dr	P.NIZZI				
AJ	F-25050	DDE	16.09.28	engr	JM.PHAMVAN				
AK	F-30587	DDE	18.06.29	chr	P.NIZZI				
				appd	JM.P				
sheet index	revision sheet	AK	C						
		1	2						

FCI  
FCIconnect.com  
Copyright FCI



Copyright FCI

mat'l. code SEE NOTE 1 & 2				surface ISO 1302 ✓		tolerance ISO 406 ISO 1101		projection mm		product family DUBOX	
ltr	ecn no	dr	date	tolerances unless otherwise specified		angles		linear		title	
A	F04-0347	DLE	04.11.10					.X ±0.3		SMT BtB RECEPT.	
B	F06-0204	DLE	06.06.23					.XX ±0.13			
C	F11-0016	JCO	11.01.31					.XXX ±0.05			
				dr		P.NIZZI		95.06.21		dwg no	
				engr		J.M.PHAMVAN		95.06.21		sheet 2 of - size	
				chr		P.NIZZI		95.06.21		89898 A4	
				appd		J.M.P		95.06.21		type CUSTOMER Drawing	
sheet index		revision sheet									

form: A4

# Mouser Electronics

Authorized Distributor

Click to View Pricing, Inventory, Delivery & Lifecycle Information:

[Amphenol:](#)

[89898-310BLF](#)