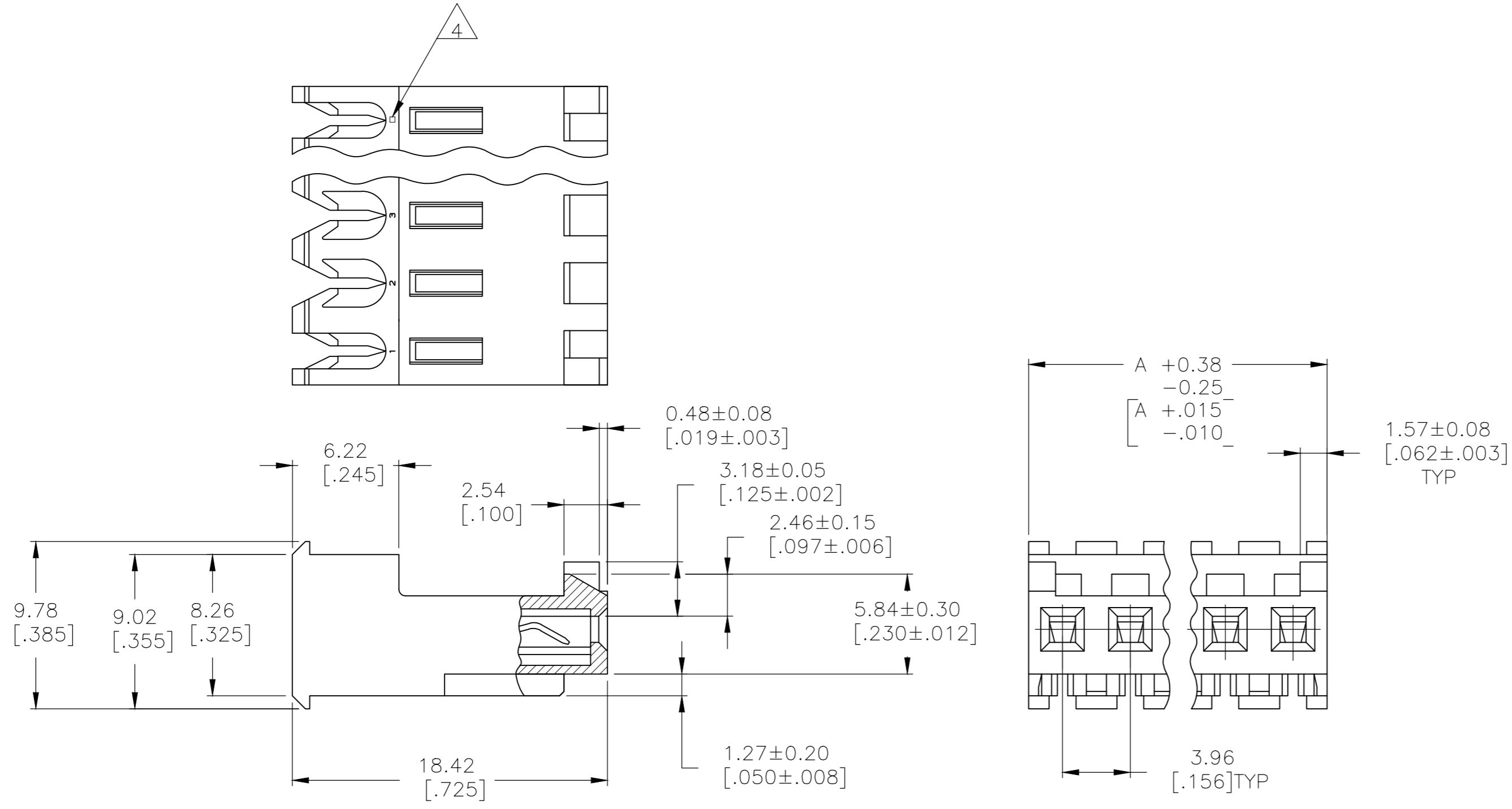


THIS DRAWING IS UNPUBLISHED. RELEASED FOR PUBLICATION
 © COPYRIGHT - By - TE CONNECTIVITY ALL RIGHTS RESERVED.

LOC	DIST	REVISIONS			
P	LTR	DESCRIPTION	DATE	DWN	APVD
CM	00	E2	REVISED PER ECR-17-018282	08MAY2018	BDA SG



55.47[2.184]	14	4-644466-4
51.51[2.028]	13	4-644466-3
47.55[1.872]	12	4-644466-2
43.59[1.716]	11	4-644466-1
39.62[1.560]	10	4-644466-0
35.66[1.404]	9	3-644466-9
31.70[1.248]	8	3-644466-8
27.74[1.092]	7	3-644466-7
23.77[.936]	6	3-644466-6
19.81[.780]	5	3-644466-5
15.85[.624]	4	3-644466-4
11.89[.468]	3	3-644466-3
7.92[.312]	2	3-644466-2

- 1 MATERIAL: CONNECTOR - NYLON UL94V-2 (YELLOW).
 CONTACTS - 0.30[.012] THICK COPPER ALLOY
 (BRIGHT TIN-LEAD 0.00203[.000080] MIN. THICK
 FOR CONTACTS 644466-2 THRU 1-644466-4)
 (MATTE WHISKER MITIGATED TIN 0.00203[.000080] MIN
 THICKNESS OVER NICKEL UNDERPLATE FOR
 3-644466-2 THRU 4-644466-4).
- 2 CONTACTS ACCEPT 20 AWG WIRE WITH 2.41[.095] MAX INSULATION DIAMETER.
- 3 CONTACTS MUST ACCEPT 1.14±0.03[.045±.001] SQUARE POST AND REMAIN LOCKED IN POSITION.
- 4 IDENTIFICATION NUMBER FOR LAST CIRCUIT MAY NOT APPEAR ON ALL ASSEMBLIES.
- 5 DIMENSIONS IN BRACKETS ARE IN INCHES.
- 6 HOUSING FEATURES ARE: FEED-THRU WITH LOCKING RAMP AND POLARIZING TAB.
- 7 OBSOLETE PARTS: OBSOLETE CIS STREAMLINING PER D.RENAUD/D.SINISI
- 8 OBSOLETE PARTS

8	SUPERSEDED BY 4-644466-4	55.47[2.184]	14	4-644466-4
8	SUPERSEDED BY 4-644466-3	51.51[2.028]	13	4-644466-3
7	SUPERSEDED BY 4-644466-2	47.55[1.872]	12	4-644466-2
7	SUPERSEDED BY 4-644466-1	43.59[1.716]	11	4-644466-1
8	SUPERSEDED BY 4-644466-0	39.62[1.560]	10	4-644466-0
7	SUPERSEDED BY 3-644466-9	35.66[1.404]	9	3-644466-9
8	SUPERSEDED BY 3-644466-8	31.70[1.248]	8	3-644466-8
7	SUPERSEDED BY 3-644466-7	27.74[1.092]	7	3-644466-7
7	SUPERSEDED BY 3-644466-6	23.77[.936]	6	3-644466-6
7	SUPERSEDED BY 3-644466-5	19.81[.780]	5	3-644466-5
8	SUPERSEDED BY 3-644466-4	15.85[.624]	4	3-644466-4
7	SUPERSEDED BY 3-644466-3	11.89[.468]	3	3-644466-3
8	SUPERSEDED BY 3-644466-2	7.92[.312]	2	3-644466-2

DIM A NO OF CIRCUITS PART NO.

THIS DRAWING IS A CONTROLLED DOCUMENT.		DWN S. CARPENTER 14AUG2003			
DIMENSIONS: mm [INCHES]		CHK D.BOSSI 14AUG2003			
TOLERANCES UNLESS OTHERWISE SPECIFIED:		APVD D.BOSSI 14AUG2003	NAME		
0 PLC ± -		PRODUCT SPEC	MTA 156 CONNECTOR ASSEMBLY, 20 AWG, STANDARD		
1 PLC ± -		APPLICATION SPEC	SIZE	CAGE CODE	
2 PLC ± -		108-1051	114-1020	DRAWING NO	RESTRICTED TO
3 PLC ± 0.13 [.005]		114-1020	A2 00779	C=644466	-
4 PLC ± -	FINISH	WEIGHT	SCALE	SHEET	
ANGLES ± -	1	CUSTOMER DRAWING	4:1	1 OF 1	
			REV	E2	